



Power meets precision in the T8 Genesis!



Manitou's intensive task telehandlers



Bringing clean energy to London buses

PLUS great finance and service offers...

- AGRICULTURE PROJECTS
- GROUND CARE
- DAIRY
- LORRY CRANES
- COUNTRY STORE
- CONSTRUCTION
- ENERGY, FIRE & SECURITY
- MACHINERY IMPORTS

GROUND CARE



MAKING THE PITCH FOR ROVERS

In these uncertain times it's particularly pleasing to see a West of England football club making a serious investment in the future of the national game. T H WHITE too is proud to be playing a part in the initiative.

In 2017 the owners of Bristol Rovers FC purchased a 28-acre site at Almondsbury with the intention of creating a new training centre for the club. The need to go ahead and build the new training ground became more pressing this year as the Rovers players had to vacate their previous training facility when the lease expired.

The objective was to create two fibre sand pitches and a practice area alongside a building containing changing rooms, a gym and a physio room, with a new club house to follow later.

Contractors moved in at the end of June and were faced with a mammoth task. The existing terrain was uneven and rocky, with large rocks buried deep in the subsoil, some of which were too big to move without risking the stability of the surface. That meant the height of the pitches had to be raised more than originally anticipated.

Once the basic earthworks had been completed, drainage work and piping for sprinkler systems was incorporated prior to the delicate task of creating perfectly level, high quality pitches. Layers of gravel and sand were then spread across the ground, precision levelling being achieved using a laser and spirit level combination which communicated directly with the drivers spreading the gravel. Fine sand and topsoil followed, with final

levelling being carried out by hand.

Responsibility for the finished pitches was then passed to the Bristol Rovers groundstaff, led by Head Groundsman Daryle Sullivan and his assistant Martyn Rendell.

"The seeding was carried out in mid-August," said Daryle, "so we spent almost every day on site nurturing and watering the newly-sown grass, and eventually starting carefully-controlled mowing. At the beginning that was all done with walk-behind pedestrian mowers, but we needed to start thinking about the on-going pitch maintenance."

Enter Stuart Fry of T H WHITE. "When I saw the quality of what had been achieved with the new pitches I knew some quality kit would be needed to keep it that way. After speaking to Daryle the club ordered a Jacobsen TR 320 triple mower, an Iseki TG6495 IQ compact tractor, Wiedenmann GXi8 Terra Spike for maintaining good drainage, and a Terra Rake 230. For high quality finish-mowing four Honda HRD 536 QX professional walk-behind mowers were added to the order, as well as a Kawasaki Mule SX to move things around the site."



Top: Head groundsman Daryle Sullivan, Stuart Fry and Assistant Groundsman Martyn Rendell with some of the new equipment being used at the Bristol Rovers Training centre.

Above: Seeding is believing. The quality of the pitches and training area at Almondsbury is exceptional.

The first training sessions on the new pitches took place on 26 October, giving the players a superb environment to keep on top of the new League season.

"It's great to be helping a football club maintain the highest standards despite the current situation," said Stuart.

If you would like to talk about high quality groundcare equipment, call Stuart Fry on 07774 212926, or contact any T H WHITE Groundcare branch.

News and information from the T H WHITE Group

T H WHITE GROUP

GROUP

WHITE'S WORLD

White's World is published monthly by T H WHITE. To contact our Divisions, call:

Agriculture	Knockdown	01454 238181
	Marlborough	01672 512328
	Frome	01373 465941
	Huntley	01452 830303
	Hereford	01432 352333
	Toddington	01242 620211
	Devizes	01380 722381
	Stockbridge	01264 811260

Projects	01380 723040
-----------------	---------------------

Groundcare	Knockdown	01454 238181
	Reading	0118 976 0088
	Redditch	01527 597770
	Stockbridge	01264 811260

Dairy	Frome	01373 465941
	Huntley	01452 830303

Lorry Cranes	01380 733513
---------------------	---------------------

Country Store	Marlborough	01672 518408
	Knockdown	01454 238181

Construction	01672 512328
---------------------	---------------------

Energy, Fire & Security	01380 726656
------------------------------------	---------------------

Machinery Imports	01264 811260
--------------------------	---------------------

www.thwhite.co.uk
 © T H WHITE Group 2020 E&OE
 Nursteed Road Devizes Wilts SN10 3EA
01380 722381
 To unsubscribe from T H WHITE Group marketing, please visit www.thwhite.co.uk/unsubscribe
WHITE'S WORLD ONLINE
TO SIGN UP FOR WHITE'S WORLD please visit www.thwhite.co.uk/sign-up. We will then send you a monthly email with links to all the stories and offers. You can unsubscribe at any time.

COVID-19 UPDATE

For the latest updates from each of our divisions please visit thwhite.co.uk/coronavirus.

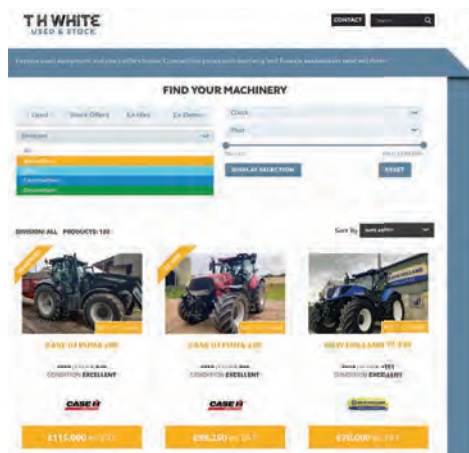
GROUP

NEW LOOK FOR USED WEBSITE

The T H WHITE website dedicated to used machinery and equipment has undergone a complete overhaul to make it easier to use and navigate.

Over recent years the used equipment offering from T H WHITE has become more comprehensive and has grown to include not only straightforward used items but also stock offers, ex-demo and ex-hire machinery.

The revamped site now makes it simpler to pinpoint exactly what you are looking for.



Straight from the landing page you can search by Division (Agriculture, Dairy, Construction and Groundcare), as well as machinery type and manufacturer. Additional search parameters have

been added, including year of manufacture, clock time (where applicable) and minimum/maximum price.

Once an item is selected you can view the specification, a gallery of images and contact details to make further enquiries.

Visit the site today at www.thwhiteused.co.uk

GROUP

WHITE'S WORLD IS CHANGING...

We have been producing White's World monthly for 26 years; for several years we have also made all stories available digitally from our website here www.thwhite.co.uk/whites-world and through a monthly e-shot for our readers who are happy to receive news via email.

Based on the feedback we have received, we are making some changes for 2021.

This issue of White's World (December 2020) will be the last in the

present format; for future issues we will be moving from a monthly to a quarterly publication delivering a more seasonal and wide ranging selection of news stories, reviews and articles.

The quarterly issues will be in February, May, August and November.

However, in order to make sure you can still benefit from the full line-up of offers, money-saving deals and finance packages, we will continue to send digital only offers for our machinery businesses between the issues of White's World.

Look out for the first quarterly White's World in February.



AGRICULTURE

40 YEARS OF DOING THE BEST JOB IN THE WORLD!

ON THE VERY DAY that Andy Taylor was celebrating 40 years of working for T H WHITE his postman delivered a pack of literature promoting retirement home living.

"Well, I'm not ready for that," Andy laughed, "but one of my customers did remark that I might be better off just checking into the local abattoir!"

That lighthearted approach typifies a generosity of spirit that has made Andy a popular figure on the regional agricultural scene for the last four decades, as well as achieving the status of being one of T H WHITE's most successful salesmen.

His remarkable depth of knowledge on farming and agricultural equipment might suggest that he came from a farming background, but that was not the case. "My dad was a builder, but I knew I didn't want to follow in his footsteps doing that," says Andy. "I spent a lot of my childhood on a local farm and was driving tractors by the age of 12. That led to banger racing, which is where I met John Earley who was then a sales manager at T H WHITE and went on to lead the Agricultural Division. John asked me if I fancied a job fixing tractors, so I started one-day-a-week work experience.

"They obviously thought I wasn't too bad as, aged 16, I started a four-year apprenticeship at Sherston. At the end of that I was lucky enough to win the 'Best Apprentice in the South West' award which was presented to me at the Royal Bath & West Show."

After ten years in the Sherston workshop, Andy's potential talent as a salesman was spotted and he was asked to visit Mrs Carol Hatherell, the wife of a highly respected local farming family. Although he didn't know at the time, this was for an unofficial interview. "She seemed to like me," Andy recalls. "I didn't swear or misbehave so I got the sales job!"

"One thing I learnt very quickly is that it's no good trying to sell things to a farmer out in the yard - you have to get round the kitchen table with a cup of tea and spread all the papers out. Over the



Andy Taylor, his wife, daughters and other members of the family on the farm.

years customers began to realise that it could be a big mistake to feed me too many cups of tea or chocolate biscuits as I might start turning up for breakfast, lunch and dinner too! Seriously though, I know selling is my job but it's about so much more than that - it's about helping people. If I can pinpoint what a farmer is trying to do and then help him to do that in a way that works and is affordable, I can then go away feeling that it's a win for both of us - we have supported each other."

2014 was a memorable year for Andy as he sold a quartet of the biggest machines offered by T H WHITE: the biggest combine, the biggest Quad-Trac, the biggest wheeled tractor and the biggest forage harvester. "That was a boom year and things aren't like that in 2020, but agriculture has to carry on and I'm just as busy as ever trying to help farmers meet some of the huge challenges they are facing." It's not just farmers that Andy has helped - there are many younger salesmen who have benefitted from his mentoring and experience who have gone on to success in their own rights.

These days Andy, his wife and three

daughters live on a farm. "I'm really proud of my girls," he says. "One of them works on the farm, the youngest is chairman of Malmesbury Young Farmers and the eldest is chairman of Wiltshire Young Farmers. The social scene is also a great way of doing business - it's amazing how often when my Daughters' are out shooting they are able to pick up new leads, the only downside is they ask for any commission!"

In recent years Andy has been able to extend his working area into Wales and once again has been welcomed by some lovely farming families.

"After 40 years in the job there's only one thing I really want to say, and that is to give massive thanks to the farming community for all the help, support and encouragement you have given me. My job has been like no other, and it's all due to the great people you meet in farming."

This profile of Andy Taylor is the first in a series initiated by new Agriculture Division director David Rapkins who wants to recognise long serving members of staff and share their history and achievements with our customers. This will become a regular feature in White's World.

T H WHITE PROJECTS

PLANT UPGRADES AND REPLACEMENT

MATERIALS PROCESSING, DRYING, BULK STORAGE
AFTERMARKET CUSTOMER SERVICE AND SUPPORT

Contact us now on 01380 723040 and ask for Ian Robinson or send a mail to cssprojects@thwhite.co.uk

If you are thinking about modernising your site operations either on intake, storage, drying or new buildings, our skilled professionals are ready to assist.

- Free Advice
- Mechanical & Electrical
- Design & Construct

- Consultancy
- Repairs & Service
- Installation/Fabrications

- Refurbishments
- New Machinery
- Health & Safety

GRAIN STORE EMERGENCY OUT OF HOURS HOTLINE: 07919 394602

CALL US NOW AND BE PREPARED

NEW HOLLAND CONSTRUCTION

0+2 Annual payments OR
2+22 Monthly payments
@ 0% Interest
on all New Holland Light
Construction Equipment
Excluding Mini Excavators

Speak to your T H WHITE rep today!

**DON'T MISS
OUR 'SILVER'
15% WINTER
SERVICE
DISCOUNT**

BOOK BEFORE 31 DEC

GOLD
For orders placed before 30 November 2020,
invoiced before 31 January 2021
20% OFF
Labour and In-Stock Parts

SILVER
For orders placed before 31 December 2020,
invoiced before 31 March 2021
15% OFF
Labour and In-Stock Parts

BRONZE
For orders placed before 15 February 2021,
invoiced before 30 April 2021
10% OFF
Labour and In-Stock Parts

**There has never been a better
time to take advantage of our
winter service programme which
offers some of the best early-bird
discounts in the market.**

Book your equipment in now
and our manufacturer-trained
technicians will return it in top
condition ready for next season.

**BOOK ONLINE AT
thwhiteagriculture.co.uk/
get-in-touch**

BEST PRICE PROMISE
Winter Servicing from
T H WHITE Groundcare

Contact your local depot to
negotiate the **VIP price** for your
service today. Great deals available
and our trusted and experienced
Groundcare specialists will service
all makes and models.

Call your nearest branch:

Knockdown:
Tim Counsell - 01454 238181

Reading:
Nick Brown - 01189 760088

Redditch:
Nick Maxwell - 01527 597770

Stockbridge:
Nick Brown - 01264 811260

Applicable to all enquiries made
for bookings before 31 March 2021

AGRICULTURE



**UK agriculture has seen considerable
change in the past fifty years,
with advances in farm machinery
technology arguably one of the
greatest examples of progress.**

As well as massively increased
working widths and capacities, the
industry has seen innovation in
techniques, significant automation, and
new levels of precision application that
would have been unimaginable half a
century ago.

Over this time, manufacturers
have come and gone, but one that has
endured and adapted – going from
strength to strength – is KUHN Farm
Machinery, which celebrates its 50th
anniversary in the UK in 2020.

KUHN was established in 1928, but
since it arrived in the UK in 1970 – when
the company's offering comprised a small
range of grass machinery and some power
tillers – it has worked in partnership with
committed dealers such as T H WHITE.



A KUHN delivery in the early UK days. Things have certainly moved on – just compare this with the photo on the opposite page!

As T H WHITE commercial director James Ashworth explains, KUHN's long-standing reputation for strength and reliability has underpinned the relationship, and this is being reinforced in a more technologically advanced era. "We're used to a KUHN product 'doing what it says on the tin,'" says James, "with reliability a key selling feature alongside strong demand in the used equipment market, and that remains important. However, today's farmers expect higher levels of technology, such as precision farming, and it's reassuring to know that KUHN is at the forefront of this too."

For T H WHITE customers, KUHN has for many years been the 'go-to' company for grassland machinery, with mowers, tedders and grass rakes being big sellers. In more recent times, the business has grown, with ploughs, drills, cultivation kit, and feeding and bedding equipment coming more to the fore.

In all cases, James sees the expertise of KUHN's people being key to the sales and support function, as well as the critical aftersales service.

"We're relatively close to Telford and know we can rely on KUHN to supply



KUHN's first UK premises, at Wellington, now part of Telford.

anything that we don't have in stock, particularly in-season 'out-of-hours' support."

As KUHN's longest standing employee Peter Morris explains, parts supply is now a state-of-the-art operation, having progressed a long way over the company's fifty year history.

"Supplying spare parts through longstanding dealers such as T H WHITE has always been an essential element of the business and this has been transformed over the years," says Peter.

"In the early days, urgent orders would come in by phone to Mrs Hollins' home, which was about a mile from the depot. We would travel to and from the Hollins' house, twice a day, to pick up urgent parts orders and then despatch them through 'weigh and pay' at the railway station, or on Securicor. Less urgent parts orders came in by post and packages were sent out via the Post Office, using Data Post. As the business grew KUHN was at one point the biggest user of Data Post in Telford."

Maintaining parts supply efficiency has always been a priority for KUHN, and the company pioneered online ordering in the UK in 2005 through its dealer network. During 2015 and 2016, the department underwent a major refurb, modernising its fully dedicated parts facility at its current seven-acre site in Telford. KUHN UK now has just over 6,500 parts lines in stock, despatching 70-100 orders on average per day to customers with an average annual pick rate of 97% being maintained.

"The system we have today, with the capability of next day and overnight delivery services for a huge range of components, is a long way from the six wooden racks and manually recorded system of the 1970s," adds Peter. "Nevertheless, the philosophy of



The modest KUHN UK offering of the early 1970s. This is the 1971 Royal Highland Show.

A PARTNERSHIP FOR PROGRESS



Today's KUHN state-of-the-art parts warehouse at the seven acre site in Telford.

delivering what the customer needs, as fast as possible, has remained constant."

KUHN UK parts manager, Daniel Banks adds: "It is now possible for us to supply 95% of parts to KUHN dealerships across the country before 8am, offering dealers and farmers the best possible service."

Being customer-led is a theme that perpetuates throughout KUHN UK's history and is a quality shared with T H WHITE. Landmark developments such as the introduction of power harrows is a good example of how the company has responded to farmer demands.

The company sold its first power harrows in 1980 and by 1996 was delivering over 1,000 units per year onto UK farms. "Power harrows provided a major breakthrough for KUHN through the 1980s and 1990s," says the company's national sales manager Duncan McLeish, who joined as an area sales manager in 1985. "The KUHN machine has always been built to last and went a long way to establishing our reputation for strength and reliability."

"There was significant demand for four metre machines in the 1990s, and we developed a transport kit for these wider machines to allow UK farmers to have the working capacity they wanted whilst still being able to comply with road transport regulations. KUHN UK was also directly involved in the development of the first six-metre folding power harrow, again in response to farmer demand."

Sales of power harrows continue, with combination units incorporating the Venta pneumatic drill remaining a sector-leading implement, but KUHN has also embraced the move towards minimum tillage. The company now includes a range of minimum tillage cultivators and drills, alongside its more conventional soil preparation and crop establishment range.

specialists and a dedicated marketing department.

Managing director Siân Pritchard instigated the expansion of the product support function around ten years ago as part of a wider recruitment drive that has in the past three years seen a 25% increase in the headcount for KUHN UK.

"We're continuing with our commitment to deliver the very best technical support back-up to our customers," she explains. "Our investment in people is consistent with our success in increasing sales and a continuing drive to grow market share in priority product areas."

"Having more people on the ground is being noticed by our dealer network and is becoming an important differentiator for the business. It's a crucial factor in ensuring we achieve our goal to push UK sales figures to new heights and to provide a more complete, efficient and thorough service to our UK customers."

Since its humble beginnings in 1970, KUHN UK has been part of a rapidly developing agricultural industry. The company has stayed relevant, and maintained growth, through innovation and continuing product development, and the aim is to continue the upward curve with an ever-improving offer. "Strength and reliability have been core values for KUHN since the start, and these principles have led to strong relationships with dealers and end customers," says Siân Pritchard. "Going forward, it's essential that we maintain these principles and lead the way in electronics and precision agriculture. We also need to continue to offer the best in terms of servicing, warranty and finance, and ensure we maintain the very best customer communications."

"I believe that with new initiatives like the MyKUHN customer portal, and innovations like our Click & Collect feature for ordering parts from the dealer, we are fit for the future and ready to continue working with T H WHITE into the next phase of the agricultural revolution."



Even the largest KUHN equipment can be shipped anywhere in the UK.

DECEMBER OFFERS

G THREE-PART TOOLKIT GRANIT QUALITY PARTS

All the tools you need for a wide variety of jobs with this set of screwdrivers, allen keys and adjustable ratchet spanner, all from Granit.

JUST £49



HANDLEBAR MUFFS

Keep your hands warm and out of the winter chill with these quality handlebar muffs. Ideal for any quad bike.



JUST £29



Holts DE-ICER AND SCREENWASH

Clear your windscreen faster on frosty mornings and keep it cleaner for longer this winter.

£3.32 EACH



HG GLADWELL BIRD SEED

Help your local wildlife and keep the birds happy and healthy this winter with this quality wild bird seed mix.

**12.75kg pack
ONLY £9.99**

**T H WHITE
AGRICULTURE**

FROM T H WHITE AGRICULTURAL PARTS STORES
PRICES SHOWN EX-VAT For current offers see:
www.thwhiteagriculture.co.uk

AGRICULTURE

MyKUHN: FREE ONLINE SERVICES AND PARTS ORDERING



MyKUHN is an online customer portal, accessible to all owners and users of KUHN machinery. This free portal offers exclusive services to help you manage and maintain your KUHN machine fleet more easily.

Once logged in, on computer, mobile or tablet, you will be able to manage your KUHN machines by having access to parts catalogues and operator manuals in the Support area, order parts to click and collect from T H WHITE, find product and user information from the Expert area, as well as receiving updates on events and KUHN offers.

It's easy to sign up – all the details and instructions can be found at www.thwhiteagriculture.co.uk/mykuhn

GROUND CARE

RANSOMES HR380 – NEW FOR 2021



The latest professional mower from Ransomes, the HR380, is ideal for cutting grass which is not regularly mowed as well as being easy to use and maintain.

Using a powerful and clean EU Stage V 37.5hp engine, the deck sizes range from 1.52 to 1.83m and the whole unit is designed for comfortable operation and easy road transport. Flail or Rotary deck options are available including an integrated Muthing flail system or durable bolt-on and flip-up rotary deck. Ergonomic features include fingertip unit control, high spec mechanical suspension seat (air suspension seat available as an option) and wide range of storage options. Contact your groundcare branch to request a free, on site demonstration.

AGRICULTURE

MUCK SHIFTER

Based at Meysey Hampton near Cirencester, Nick Keyser runs a small agricultural contracting business. Much of his work centres around baling, spreading, combining and hedge cutting, but he also offers his customers the service of collecting and transporting horse manure.

"My old 14-tonne trailer had seen a lot of service," said Nick, "and to be honest I needed something with more capacity so I was looking around for a replacement. I mentioned it to Andy Taylor at T H WHITE who suggested trying their Ktwo demo Roadeo compact & push trailer.

"I took him up on his offer and the Ktwo 18-tonne trailer duly arrived – I have to say I loved it!

"Everything about the trailer was high quality from the thick two-pack paint finish to the sprung tandem axles. The pusher system made it much quicker and easier to unload than a tipper trailer, while offering a lower centre of gravity which makes it much more stable. The ability to compact the manure gives you up to 40% more capacity too, but of course you can't do that with cow muck.



"The demo trailer was a hi-spec unit with some great extras like a steering axle and air braking, but with money tight in the current climate I decided to go for the basic 18-tonne model. I've had it just over a month now and it's brilliant! Of course I would have liked the extra bells and whistles, but the quality of the base model is just as good. I'm still discovering what it can do, but it has already saved me a huge amount of time

– it saves me roughly two journeys each time I'm moving horse muck!"
Ktwo Roadeo compact and push trailers area available in capacities of 16–25 tonnes with up to 74.3 cubic metre capacity with compression. With a range of optional extras, they are ideal for silage, grain, woodchip and waste haulage. If you would like to try one contact any T H WHITE Agriculture branch to arrange a demo or to find out more.

AGRICULTURE



T H WHITE Agriculture was delighted to be involved in the 2020 'Three Counties Farmer Farming Awards', proudly sponsoring the 'Pig Farmer of the Year' award.

Returning for its second year, the Farming Awards celebrate the best of the farming community in the counties of Herefordshire, Gloucestershire and Worcestershire.

Due to the pandemic, the awards were hosted live online on 26 November by BBC Countryfile presenter Adam Henson with features from special guests including adventurer Ben Fogle, England rugby player James Haskell, Masterchef winner Stu Deeley and many more.

After the judges had deliberated, the much deserved winner of the Pig Farmer award was Weobley Ash of Presteigne, Radnorshire.

Congratulations to all worthy winners and thank you all for your hard work in feeding our nation.

Even if things are a little different this year,

**LET CHRISTMAS
WEAVE ITS
MAGIC..!**

LIGHTS • DECORATIONS
WREATHS • GIFTS • CLOTHING
SHOES • EQUESTRIAN
SEASONAL DELIGHTS

Everything you need to make
Christmas special – all under one roof.

London Road
Marlborough SN8 2RN
01672 518408

OPENING TIMES
Mon-Sat: 8am - 5.30pm
Sundays & Bank Holidays: 10am - 4pm

**T H WHITE
COUNTRY STORE**

FREE 4 YEAR PLATINUM LEVEL WARRANTY COVER ON T5s



Don't miss out – offer ends 31 December 2020

When you buy an in-stock New Holland **T5 Utility** or **T5 Electro Command** tractor from T H WHITE you will qualify for a **4 year, 3000 hour** Manufacturer Warranty cover at Platinum Level with **'zero' contribution**.

Speak to your Sales rep for full details today.

Offer closes 31 December 2020. Terms and conditions apply.



PROTECT YOUR PEOPLE & PREMISES SAVE UP TO 20%* ON YOUR CURRENT FIRE AND SECURITY COSTS BY SWITCHING TO T H WHITE.

We know that even with the best intentions it's not always easy to keep on top of maintenance, so T H WHITE has a great offer to address ALL your fire and security service needs, saving you money at the same time.

For the three basic disciplines – Fire (including extinguishers), Intruder Alarms and CCTV, we are offering:

- **10% OFF*** when you transfer one discipline.
- **15% OFF*** when you transfer two disciplines.
- **20% OFF*** when you transfer three disciplines.

OR ADD A NEW TECHNOLOGY TO YOUR EXISTING SERVICE CONTRACT WITH US AND RECEIVE 10% OFF ANY EXTENSION.

If you already have a service contract with us and you add a new technology, we'll reduce the cost of that extension by 10%. So, if we currently service your alarm system, you could add fire equipment, or vice versa. Or, perhaps, add CCTV or door access...

To find out how to claim your discount call 01380 726656, email clc@thwhite.co.uk quoting 'Service Discount' or complete the online form at efs.thwhite.co.uk/contact

*Terms & conditions: To qualify customers will need to provide evidence of annual contract charges or 12 months of invoices from their current supplier. The discount offer is also open to existing T H WHITE customers taking on a new technology with us. For example, if we currently service your fire alarm and you wish to add CCTV or Door Access. We reserve the right to decline a service contract subject to survey.

T H WHITE
ENERGY, FIRE
& SECURITY

01380 726656
efs.thwhite.co.uk

PRO AGRI



FREE AFS HARVEST COMMAND

Don't miss out on our fantastic autumn Axial-Flow offer!

Order a Case IH Axial-Flow 250 series combine harvester by 15 December 2020 and get AFS Harvest Command for free! This advanced technology simplifies harvest by proactively sensing and optimising machine settings to maximise grain quality and grain savings – regardless of the operator's skill level.

What's more, we'll also give you **six weeks free hire of a Puma tractor** during harvest 2021!

Details at bit.ly/AxialAutumnOffers

AGRICULTURE



SCRAPER SPECIAL!



T4.55: The ideal tractor for the daily scrape

This 'Mini Muck Mover' is focused on power, durability and reliability.

Call your sales rep to learn more...



AGRICULTURE



BRITISH-BUILT CHAFER CROP SPRAYERS JOIN T H WHITE LINE-UP

T H WHITE's offering of leading agricultural brands has been further strengthened by the addition of Chafer crop sprayers to the line-up.

Designed and built in North Lincolnshire, the Chafer range of trailed and self-propelled crop sprayers focuses on quality, low cost of ownership and easy access to parts through the company's UK supply network. Chafer was established in 1901 and over the last century the company's extensive experience of application techniques and development of dedicated spraying equipment has made it a byword for the accurate application of agricultural chemical and liquid fertilisers.

New design features and technologies are incorporated in Chafer sprayers to make operation easy and ensure excellent productivity whilst maximising application accuracy. For example, Chafer's ePlumbing systems

offer operators fully automated filling, rinsing and dilution at the touch of a button. All chafer sprayers also feature stainless steel main and rinse tanks which are supremely strong and easy to clean.



Top: Chafer Defender self-propelled sprayer. **Above:** Chafer Guardian trailed sprayer.

Chafer Guardian and Sentry trailed sprayers offer boom widths from 24m to a massive 42m with tank capacities from 3,000 to 6,000 litres, while the Defender and Interceptor self-propelled models offer high performance in the medium-

size sector with boom widths up to 36m. Deutz engines coupled to advanced Bosch transmissions deliver plentiful power with maximum economy and minimum noise output.

"Although we haven't been around quite as long as T H WHITE," said Chafer managing director Rob Starkey, "our two companies share a long history in the agricultural sector and we are delighted to be able to offer our range through such a highly respected dealer network." T H WHITE director David Rapkins commented: "Both T H WHITE and Chafer are dedicated to quality and service. We are proud to be able to extend our offering to farmers with these outstanding sprayers which will help to drive efficiency and economy."

Full details of the Chafer sprayer range are available from any T H WHITE Agriculture branch, or see www.thwhiteagriculture.co.uk.

GREAT DEALS ON USED GROUND CARE EQUIPMENT



REF: 71105153
Jacobsen Turfcat, NEW Ex-display
Outfront rotary mower, 60" Rear Discharge Deck. **Only £14,250**



REF: 71114848
Jacobsen Greens Mower, NEW Ex-display, Choice of cutting decks, powered rear roller brush, grass catcher kit. **Only £19,995**



REF: 71118382
2019 Iseki TXG237 STOCK OFFER – 25hp diesel, 540kg hydraulic lift, loaders, rear discharge and mulch. **Only £8,600**



REF: 91108149
2017 Iseki TG6675 Compact Tractor Ex-Hire, 66hp, air conditioning, 6x front weights, F12XR12 Powershuttle transmission. **Only £18,500**



REF: 71118373
2019 Iseki TLE3400 New-shop soiled, 38hp diesel, 1000kg 3 point linkage, 2/4 wheel Hydrostatic drive, Power steering. **Only £12,430**



REF: H1000298
Ferris IS600Z Zero turn, 44" rear discharge, 25hp Briggs & Stratton petrol, independent suspension, new turf tyres. **Only £3,250**



REF: H1001046
Ferris FW35 Walk-Behind Ex-Demonstrator 48" Rear discharge, Briggs&Stratton Vanguard Engine. **Only £3,750**



REF: 71110031
2017 Smithco Tournament Ultra Greens Roller Ex-hire, 16hp petrol engine, dual drive rollers, transport trailer, 260 hours. **Only £9,200**



REF: H1002019
2015 Wright Stander Mower, Large Frame, 48" cutting deck, Kawasaki engine, very good condition, recently serviced. **Only £3,500**



REF: 91112912
Spider ILD02 Slope Mower, Ex-display, mows up to 55 degrees, 70mm-120mm height of cut range, winch. **£26,500**

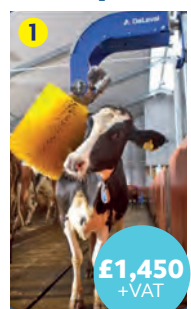
All items are subject to remaining unsold. Prices shown do not include VAT. Some images may be library photographs and spec may differ slightly. Accessories may not be included.

Contact us on 07876 396635 to discuss any of these machines and arrange your purchase.

DAIRY

COW BRUSHES

Great prices on cow brushes



1 DeLaval cow brushes promote improved cow health and welfare. It's no secret that cows that feel well also perform well. The swinging cow brush **1** is the cows' favourite, grooming all over and stimulating blood circulation.

£1,450 +VAT



2 An alternative is the stationary brush **2** which can be installed anywhere in a barn or outdoors providing a safe way for cows to remove skin or parasites, also being suitable for calves and goats.

£155.55 +VAT



3 If you are farming smaller animals such as goats or you have calves, the mini swinging brush **3** is ideal, keeping the animals calm and clean as well as lowering the risk of skin disease. It's also easy to change height.

£950 +VAT

Contact your local THW Dairy branch for capital sales From: 01373 465941 and Huntley 01452 830303 or your local van sales rep for parts and sundries.

DeLaval Milking Robot VMS Series

Thinking of investing in a DeLaval VMS milking robot. We can now offer 0% finance when you purchase.

0% Finance Available



Teatspray 99% hit rate*

No more teaching teat coordinates

10% Higher capacity*

99.8% Attachment rate*

*Data collected on test farms and pilot farms. Data compared to DeLaval VMS™ Classic. Results may vary and are not guaranteed. ** Data from VMS V310 pilot farms.

DeLaval DelPro upgrade

For phone: DelPro™ Companion 5.5
And PC: DelPro™ FarmManager 5.5



DeLaval DelPro™ – the ultimate dairy farm management resource – has just been upgraded to help you keep even closer tabs on your animals and workflow.

Forgetting to refresh the monitor board is a common issue, so there is now

Upgrade DelPro for £386.00 +VAT

an auto-refresh feature to ensure you always have the most up to date information. Other useful new features include the ability to record and track animal health checks, combine multiple vaccination protocols for a single vet visit, 'invite' animals to timed AI protocols to overcome abnormalities and get them in calf sooner, as well as separating animals into different treatment categories.

These updates and many others make DelPro FarmManager 5.5 the best release of the software to date, so talk to your T H WHITE dairy rep to upgrade.

DeLaval Calf Milk Heater



This immersion heater has a curved, cross-shaped Teflon heating element for homogeneous heating and easy cleaning.

ONLY £200 +VAT

- Easy and adjustable temperature gauge using the illuminated digital control panel
- Acoustic alert signal when desired temperature reached.
- Can be used from minimum 150mm immersion depth and maximum 720mm
- Low weight of 2.8 kg

ENERGY, FIRE & SECURITY



CLEAN ENERGY ON THE BUSES



London bus operator Tower Transit has reinforced the move towards zero emissions in the Capital by switching more than 10% of its fleet at Westbourne Park Garage to fully electric vehicles.

The first buses in an order for 37 Optare battery-electric Metrodeckers were delivered in September and, as a prelude to the transition, 37 charging bays have been installed by T H WHITE Energy, Fire & Security, with associated planning, design and project management by T H WHITE Projects.

The charging rank is located on part of a large open-air concrete deck constructed above the Crossrail railway lines, which has added considerably to the capacity of Westbourne Park Garage. Tower Transit procured Siemens charging equipment comprising 34 22kW AC units primarily used for overnight charging, plus four Sicharge 150kW rapid charging units which can deliver a fast charge during shorter layovers. They then sought an accredited installer who had the capability to deal with the specific challenges presented by this installation.

The choice of T H WHITE to undertake the Westbourne Park charging installation was a considered one: "There are plenty of companies out there touting for this sort of work," said Tower

Transit Chief of Staff, Samuel Ribeiro, "but we wanted the assurance of dealing with an experienced contractor. In T H WHITE we found not only the depth of experience we were looking for, but also a company that had a well-established track record and strong accreditations."

The project proved the worth of drawing upon expertise across T H WHITE's Divisions. T H WHITE Projects is well versed in working on large industrial installations and, as well as undertaking much of the planning, design work and site management, fabricated more than 180 metres of walkway steelwork with handrails and steps at each charging point to allow easy and safe access for drivers. As the charging bays are on an elevated concrete deck, cable containment tubes were also manufactured, both to protect the cabling and maintain high safety standards by preventing it from presenting a hazard.

The electrical design, cabling and actual charger installation was carried out by T H WHITE Energy, Fire & Security, drawing upon their extensive experience in the electrical field.

The first Tower Transit London routes to use electric buses are the C3 (Clapham Junction to Earls Court) and the 23 (Westbourne Park to Hammersmith). When all the new buses

are in service they will save around 1,800 tons of greenhouse gases compared to using buses with Euro Stage VI diesel engines. It's all part of a move towards the electrification of transport in London which will help to slow climate change and provide better air quality for all.

Tower Transit is part of the SeaLink Travel Group, which is Australia's largest integrated land and marine, tourism and public transport service provider with a 30-year record of bus operations, including the introduction of electric buses in Australia and the recent establishment of the world's first hydrogen bus consortium.

Carl Clarke, Head of Sales at T H WHITE Energy, Fire & Security, regards the project as a key accomplishment: "Working with our Projects Division and the people at Tower Transit on such a large EV charge point installation has been a great collaboration. We are all proud to have contributed to Transport for London's strategy to work towards zero emissions."

T H WHITE can install all types of EV charging points, from simple domestic installations to commercial, retail and industrial projects. To discuss your requirement call Carl Clarke on 01380 726656.





Offers valid until **31st December 2020**. For business users only. KUHN Finance can offer tailored finance plans to suit any farming cashflow. **Contact your T H WHITE Agriculture branch.**

* All finance available on 50% of the list prices unless otherwise noted. Credit promotions are available subject to status and credit acceptance. Offers subject to documentation fees. All applicants must be 18 or over, and credit is for business purposes only. KUHN Finance is a trading style of De Lage Landen Leasing Limited. All offers are only available in the UK. Please note a limited number of machines do not qualify for finance, speak to your dealer for details.

† Excludes all shredders, GMD mowers, drum mowers, haybobs, power tillers, amenity products, salt & sand spreaders, Gyrotedder models up to GF 6502 and Gyrorake models up to GA 5031. For large square balers, contact KUHN UK.



AGRICULTURE



LOGIC WINTER SALT SPREADING SOLUTIONS

When it comes to Winter maintenance T H WHITE has got it covered, with the excellent Logic GDS and PDS Salt Spreader range.

The clearing of snow and ice is essential in order to keep your farm, estate, depot or horse yard functioning safely and efficiently in poor weather. The Logic spreaders appeal to a very wide range of operators because the product is reliable, simple to use and it works!

One of the major benefits of the GDS model is that it can be towed behind any vehicle, including 4x4s, pick-ups, ATVs, UTVs or tractors. This makes it very quick to deploy at the first signs of bad weather. For winter gritting jobs it dramatically reduces the time needed to complete the task.

All Logic GDS and PDS professional salt spreaders employ the same unique hopper length 'moving floor' and agitator technology to handle any de-icing products, including wet rock salt. They feature a 270-465 litre stainless steel hopper, spreading disc and peripheral components for long life, as well as accurate application control making it possible to spread varying widths with

the option to spread to the left or right. They have a low filling height and are easy to adjust and operate.

GDS working speeds of between 5-15mph mean you can cover the ground quickly – ideal for single site operations. For contractors or multi-site use, the

litres capacity they'll cover a significant area with each fill.

The Logic range also includes models suitable for mounting onto the rear carrying platforms of UTVs, pick-ups, 4x4s or for three point linkage compact tractors, fork lifts and telehandlers tine mountings.

To complement the salt spreader range, Logic Professional snow ploughs are designed to be used with vehicles fitted with Logic 'System 20' front-mounting equipment, to produce a very capable snow clearing implement capable of high work rates. A 12v ram provides electric lift for convenient control from the cab of the operating vehicle, with all wiring and a control box provided.

With the prospect of another harsh winter ahead, you'll want to discover more about the excellent range of Logic salt spreaders, please contact your local T H WHITE Agricultural or Groundcare branch, or direct call our ATV specialists Tim Rochfort 07973 911934 or Callum Rea 07860 712963.

To see the complete range of Logic professional salt spreaders as well as the latest product videos, please visit www.saltspreaders.co.uk



Top: The Logic GDS150 salt spreader – designed for towing.
Above: This Logic PDS150 variant is designed for mounting on the rear platform of UTVs, pick-ups, 4x4s or three-point linkage compact tractors.

PDS range of engine-driven models with 'Highway Use' type-approval (ECWVTA) are fitted with full road suspension and over-run brakes. With a generous 585

AGRICULTURE



T8 GENESIS

When you need real power, or you have challenging ground to cover, New Holland's top-of-the-range T8 tractor can deliver, with both wheeled and tracked models available. Now, the new T8 Genesis takes things a stage further with remarkable integrated technology.

With the T8 Genesis it's all about combining power with precision. Four models are available from 350hp to 435hp meaning you'll never be short of grunt no matter how tough the task, but this is power that can be applied in an intelligent way thanks to next generation Precision Land Management technology, PLM Intelligence™.



Touch screens and complex software

programmes have been around for a while, but the aim with the T8 Genesis has been to make even this advanced tech simple and intuitive, so that the operator can literally 'jump on & drive'.

At the heart of this concept is the SideWinder™ Ultra armrest and IntelliView™ 12 display. The armrest has keypads which are 'zoned' for functions such as media and climate control to the hitch controls and shortcut keys that allow for one-touch navigation to adjustment menus. Hydraulic remote valves can be assigned to the paddles or joystick according to the driver's

Bearing in mind the hours that an operator is likely to spend aboard the T8, the cab has been completely redesigned with comfort in mind. There's more accessible storage, USB power ports, a powerful heating, ventilation and air conditioning two-zone system, egress lights – and the most comfortable seat you'll find outside of your living room!



Superb all-round visibility.

Visibility is incomparable too. Whether you're in an open field or on a busy road, awareness of your surroundings is essential, so in-cab obstructions have been minimised, the InfoView™ dash display has been placed in direct line-of-sight and there are even front bonnet-mounted and rear-facing cameras for road safety and in-field work.

For serious farming the New Holland T8 Genesis range can't be ignored. Speak to your T H WHITE rep to learn more, see it for yourself and discover how we can help you step up to the big league.

REXIUS TWIN: PLOUGHED GROUND TO SEEDBED IN ONE PASS



The Väderstad Rexus Twin is the heaviest press on the market, available in working widths from 4.5 to 10.3 metres – and weight matters to achieve excellent consolidation at depth on heavy soil.

In the first part of the tillage process with the Rexus Twin, heavy-duty vibrating tines cut the plough furrows. The vibrating action results in great performance, at the same time reducing the draught requirement. Then the CrossBoard grinds clods and levels the soil. A double acting stabilising bar increases levelling capacity further.

Finally, the RexusTwin packer rings provide intensive consolidation, ensuring an effective water transport for the coming crop. The packer rings are mounted in offset positions, minimising bulldozing and lowering the draught requirement. The offset position also

provides a self-cleaning effect. The wavy profile combined with the interlocking rings, keeps the rings moving in all conditions.

The packer rings are also designed to create a weatherproof surface where the water is either evaporated or transported away from the upper soil layer. This allows the field to dry faster making it possible for the seed drill to come out sooner.

The Väderstad RexusTwin is built for heavy usage in the toughest conditions. It has an extremely strong frame that can withstand stresses, allied to the fact that the packer is rubber-suspended, reducing shocks and improving the working life of bearings, axles and rings.

The really good news is that all Väderstad Rexus Twin models are available with five years interest free finance (1+4 @ 0%) until 1 January 2021. Ask your sales rep for details.

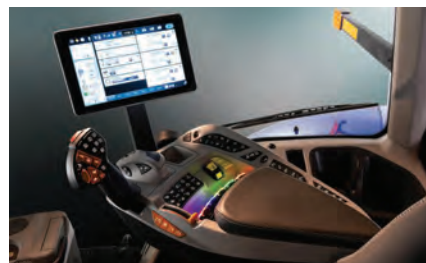
LET'S GET TO THE POINT
TIME TO SHARE SOME GOOD NEWS

LIMITED
NUMBERS
AVAILABLE



CLAIM YOUR
FREE SET
OF WEAR PARTS
FOR YOUR PLOUGH
OFFER AVAILABLE UNTIL 31/12/2020

Until 31 December you can claim a FREE set of wear parts when you purchase a New Holland plough. Just complete the flyer available from salesman or our parts counters.



The SideWinder™ Ultra armrest and IntelliView 12 display feature in the new cab.

preferences and individual tractor settings can be stored against an implement name and recalled instantly when switching between tasks.

The IntelliView™ 12 display has been designed and manufactured in-house by New Holland and much thought has gone into harmonising the way that software from its digital partners is displayed in clear control screens. You can swipe between seven customisable touch screens in the same way that you might use a tablet device – a boon when using complicated prescription maps for variable-rate applications.

Using the 4G network the farmer is able to share and analyse data with trusted partners and, using IntelliView Connect, the farm manager or dealer can remotely view the IntelliView 12 display and monitor T8 performance in real-time, ensuring productivity and uptime.

5 YEARS
INTEREST
FREE
FINANCE

Helping you spread the load
Available on all RexusTwin models. T&C's apply.



Ask your T H WHITE Sales Representative for full details

AGRICULTURE

INTENSIVE USE TELEHANDLERS

Manitou has boosted its NewAg XL range with two new models, the MLT 841 and MLT 1041, each with a capacity of more than 4.1t with maximum lifting heights between 7.6m and 9.65m. Well suited to intensive applications where more than 1,300 hours per year is envisaged, these two machines are ideal for large farms, agricultural contractors, cooperatives and agri-businesses.

To reduce the noise and vibration levels that so often blight intensive operations, the MLT 841/1041 are fitted with super-quiet cabs, comparable to those of high-end tractors, keeping noise levels down to just 69 dBA. Taking things a step further is the option of a pneumatic seat with intelligent suspension, which adapts automatically to any surface (road, field or track), reducing vibrations by more than 50% and offering optimal protection for the operator's back.

To maintain design consistency, the one-piece windscreen is covered by a roof grille with angled blades similar to other NewAg models, providing excellent visibility when load-lifting. Among other innovations, LED lighting is activated automatically every time the door is opened to light up the Easy-step, ensuring safe and easy access to the driver's cabin both day and night. Plenty of storage space inside the cabin adds to the comfort.

To ensure a high level of performance when used intensively, Manitou has fitted a new Stage V 141hp engine to these models, delivering 12% more torque while reducing fuel consumption by 11% compared to previous models. This torque gain further enhances the towing and loading performance. With torque converter transmission with automatic Powershift



gearbox and hydraulic flow of 200 l/min, these models assure optimum productivity. For a longer day's work, tank capacity has been increased by 13% too.

A range of options can also be specified, including a HighView camera, which allows the operator to see the inside of the trailer when loading, and Active CRC boom suspension which suppresses jolting when driving with a load. Other attractive innovations are the Comfort Steering System with variable assist steering which reduces the number of steering wheel turns by 40%, and the Intelligent Hydraulics package (bucket shaker, return-to-load-position and combined telescopic boom movements).

The MLT 841/1041 offer a highly competitive Total Cost of Ownership (TCO), with a saving of around £540 per annum compared to previous models placing them among the most economical machines on the market. This has been achieved partly through easier maintenance: access to all components has been improved, there are centralised greasing points and a rapid opening cleaning hatch at the

front of the radiator. The self-cleaning air pre-filter is now integrated above the engine compartment and the hydraulic oil maintenance intervals are set at 2,000 hours.

Like all new Manitou machines, the MLT 841/1041 benefit from remote connectivity which allows real-time monitoring of the location of the machine, its fuel consumption, and notifications shared with the dealer so that

maintenance requirements can be anticipated. Further to reduce the TCO, options such as Ecoston (configurable automatic engine stop) and the automatic greasing system are also available.

The MLT 841/1041 are the first Manitou machines to be offered with a new Platinum finish level which sits above the existing Classic, Premium and Elite levels. This adds many desirable features, including a pneumatic seat with adaptive suspension, hydraulic attachment locking, LED work lights on the boom head, LED front main beam headlights, HighView Camera, Comfort Steering System, Ecoston and the automatic greasing system.

If you want to enjoy the comfort, economy and performance of these intensive-use Manitous, speak to your T H WHITE Agriculture or construction rep who will be happy to arrange a demonstration.

PROJECTS

LAMMA MOVES TO MAY
LAMMA, the UK's leading agricultural machinery, equipment and technology show will now be held on 25-26 May 2021 at the NEC, Birmingham.

The change follows all the uncertainties caused by the pandemic, but the rescheduled exhibition promises to be better than ever. T H WHITE Projects will be there, so come and meet us!



MACHINERY IMPORTS INTO THE LONG GRASS



When it comes to tackling long grass, brambles, brush and scrub, there are not many better options than a flail mower. The Ferris FM35 walk-behind mower is designed to combat the most demanding environments when grass or brush has grown extensively over winter or is out of control.

Its super tough 6mm welded steel deck is home to a robust 122cm flail rotor with 34 independent flail blades which mulch and spread to leave a great finish in even the most challenging areas.

The FM35 also leads the field with a dual hydrostatic system, cruise control bar, independent retraction lever steering and thumb-controlled speed override providing a more user-friendly and smooth operation.

Powered by a 26hp Vanguard petrol engine, the FM35 includes a 19L fuel capacity, electric start and mowing speeds of up to 11km/h. Designed with the demands of grounds maintenance professionals in mind, the low centre of gravity and wide stance offers unparalleled traction and stability on level, uneven and sloping ground alike.

Request a free demonstration today with your local dealer and find out more about the FM35 at www.ferrismowers.co.uk/fm35

Prepare for 2021 mowing season with a great deal on a Ferris IS®3200Z



Find out more, arrange a demo and locate your nearest Ferris dealer at www.ferrismowers.co.uk/is3200z

PALFINGER UK

PART OF T H WHITE GROUP

HIGH FIVE FROM PALFINGER UK



FREE FIVE YEAR extended warranty on all Epsilon Classic cranes

PLUS... First year FREE when you take out a 5 year Service Plan

Learn more and find your local Sales Representative at www.palfinger.co.uk/epsilon-high-five

1+2 annual payments @ 0% until 31 December



BABY BOOMERS!

New Holland Boomer 30, 40, 50: Big-tractor reliability wrapped in a compact package. Six models, with power output from 25 to 47hp(CV).

From just **£13,495** in stock and ready to go. With agricultural or turf tyres, various transmissions available.

Don't miss this unbeatable deal... Speak to your Sales rep for full details today.

T H WHITE AGRICULTURE

TOP PICKS IN PRE-OWNED AGRICULTURAL MACHINERY



REF: 61119700

2017 CR8.90 Combine Harvester, 30ft varifeed header, twin side knife, guidance ready, twin pitch rotors, auto rotating hitch. **£184,000** Contact **PC**



REF: 61118820

2013 New Holland CR9080S Combine Harvester, 24" tracks in ex-con, AGR ready Eng/Drum Hrs: 1567/1270 **£124,000** Contact **PC**



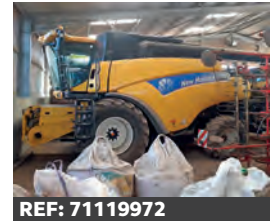
REF: 61118478

Ex-Demo 2020 New Holland CR8.80 Combine Harvester, 24" smarttrax, engine air compressor, autoguidance ready. **£POA** Contact **RL**



REF: 61115681

Ex-Demo 2019 New Holland CR8.90 Combine, 30ft varifeed header, 2 x intelliview IV monitor, autoguidance ready. **£POA** Contact **CD**



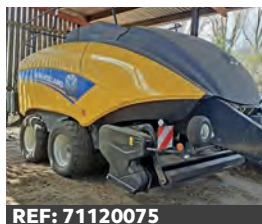
REF: 71119972

2010 New Holland CR9080, 30ft Varifeed, laser pilot, yield meter. **£85,000** Contact **AT**



REF: 11119179

2010 New Holland CR9080, 30ft Varifeed header with trailer. Eng/Drum Hrs: 3000/2300 **£78,000** Contact **CD**



REF: 71120075

2016 New Holland BB1290 Baler, 120 x 90 bale size, large steer tandem, hyd brakes, moisture sensor **£78,000** Contact **AT**



REF: 61117427

2016 New Holland T8.350 Ultra Command, 40kph, auto steer ready 5 rear remote valves. **£59,500** Contact **PC**



REF: J1119296

2020 (new) New Holland T4.110F, T4, 16x16 synchro shuttle, 40kph, 3 rear remote valves, PTO shiftable. **£42,000** Contact **BL**



REF: 61117978

2019 New Holland T7.260 AC, T4B engine, 50 kph economy, front linkage command, excellent. **£105,000** Contact **RL**



REF: 71118161

2018 New Holland T7.260, front linkage, front PTO, guidance ready, warranty, 0% finance available. **£95,000** Contact **AT**



REF: 51117144

2019 Manitou MLT840 145 PS Elite Telehandler, c/w air con, easy connect system, active CRC suspension **£82,000** Contact **RB**



REF: H1115648

Ex-Hire 2019 Case IH Puma MC 220 Tractor, 50 kph, full powershift, exhaust brake, front lkg. **£102,000** Contact **CM**



REF: 41112274

Ex-Hire 2018 Case IH Puma 200 MC Tractor, T4B, 50 kph, exhaust brake, 4 rear valves. **£105,350** Contact **CM**



REF: H1113075

Ex-Hire 2018 Case IH Puma 175 CVX, T4B, 50 kph, exhaust brake, auto guidance. **£97,000** Contact **CM**

MORE HIGH QUALITY USED EQUIPMENT

2015 Manitou MLT735 PS Elite, Manitou headstock, hydraulic locking pins, CRD, air con	£42,500	CM	REF: H1117550
Major MU8400 Roller Mower	£2,500	RL	REF: 61117066
Kongsilde Vibro-Flex	£5,300	CM	REF: H1117763
Simba Flatlift	£5,250	MQ	REF: 11119731
2016 Lely Front Mower, working width 3.2m, impeller conditioner, trailed suspension	£5,500	ML	REF: 71120330
2012 McHale Round Bale Wrapper, good condition, approx 6,000 bales	£8,750	PC	REF: 61120055
2013 Kuhn Front Mower Conditioner, all oils checked, new PTO drive shaft, VGC	£6,990	SC	REF: 51120337
2008 Kuhn FC313 Mower Conditioner	£3,750	RL	REF: 61120112
Pöttinger 4m 4030T Syncro – ex demo	£25,950	CM	REF: H1116038
Väderstad Carrier CR525XL – ex demo	£34,000	AD	REF: 61105502
2019 He-Va 3m Disc Roller Contour, soil mat – ex demo	£26,750	ML	REF: 61116358
2019 He-Va 3m Combi Disc Mounted, adjustable soil mat – ex demo	£18,500	ML	REF: 61116357

Call your T H WHITE salesman for all the details of each machine:

RB	Ray Bennett	07710 985957
PC	Paul Churches	07702 724308
SC	Stuart Crook	07831 249489
AD	Andy Daffurn	07860 331023
CD	Colin Davies	07860 401211
RL	Ryan Lanfear	07769 248602
BL	Ben Linton	07495 114479
ML	Marley Lawrence	07483 037710
CM	Chris Martin	07919 044389
MQ	Mike Quilter	07887 450200
AT	Andy Taylor	07831 255811

T H WHITE
AGRICULTURE

01373 465941 (Mon-Fri 08.00-17.00)
www.thwhiteused.co.uk

All items offered are subject to remaining unsold. Prices shown do not include VAT. Some images may be library photographs and spec may differ slightly. Accessories may not be included.