

## PROJECTS

# CUTTING THE MUSTARD



**Mention mustard to most people and Norwich springs to mind. For 165 years a well-known brand of mustard was produced in the city, but following the closure of the old factory a new mustard milling and mint processing plant has been built on the outskirts of Norwich in conjunction with its new operator, Condimentum.**

The historic connection with mustard production in the city is being maintained through a new business arrangement with the local growers consortium Condimentum and the new processing facility has been built on a greenfield site at the Norfolk food Enterprise Park in Easton.

T H WHITE Projects was appointed on a consultancy and overall project management basis to offer its services throughout the construction of the project. This began with initial ground investigations, then by supporting the planning application through to the approval and build phases. Throughout the development it was important to ensure that the new facility was compliant with building regulations and met the standards for food safety certification.

In addition to involvement in all on-site structural

steelwork design, civil engineering and supply services, T H WHITE Projects also played a key role in the plant and equipment testing and process specifications arising from the contractor tendering and selection phase, prior to incorporating the resultant milling equipment designs into the overall scheme.



specialised drying process with a volumetric blending system used when feeding into the main milling facility.

Right from breaking the first ground on-site, through to starting up the first milling line, the contract build programme was conducted to a very tight schedule, requiring a collaborative and integrated approach to the project from all involved.

An annual crop of 6,000 tonnes of mustard seed is available locally to the new plant every year and, with this in mind, T H WHITE Projects designed, supplied and installed an intake, drying and storage plant of ample capacity, which was constructed alongside the main facility. This included an enclosed bulk-truck discharge intake, localised hopper bottom storage, plus a

Continued on page 2 >>



**Focus on feeding and bedding**



**New Holland's CH7.70 introduces 'Crossover Harvesting'**



**Just landed from the world of Manitou!**

**PLUS great finance and service offers...**

AGRICULTURE

PROJECTS

GROUND CARE

DAIRY

LORRY CRANES

COUNTRY STORE

CONSTRUCTION

ENERGY, FIRE & SECURITY

MACHINERY IMPORTS

**News and information from the T H WHITE Group**

**T H WHITE GROUP**

**GROUP**

**WHITE'S WORLD**

White's World is published monthly by T H WHITE. To contact our Divisions, call:

<b>Agriculture</b>	<b>Knockdown</b>	<b>01454 238181</b>
	<b>Marlborough</b>	<b>01672 512328</b>
	<b>Frome</b>	<b>01373 465941</b>
	<b>Huntley</b>	<b>01452 830303</b>
	<b>Hereford</b>	<b>01432 352333</b>
	<b>Toddington</b>	<b>01242 620211</b>
	<b>Devizes</b>	<b>01380 722381</b>
	<b>Stockbridge</b>	<b>01264 811260</b>

<b>Projects</b>	<b>01380 723040</b>
-----------------	---------------------

<b>Groundcare</b>	<b>Knockdown</b>	<b>01454 238181</b>
	<b>Reading</b>	<b>0118 976 0088</b>
	<b>Redditch</b>	<b>01527 597770</b>
	<b>Stockbridge</b>	<b>01264 811260</b>

<b>Dairy</b>	<b>Frome</b>	<b>01373 465941</b>
	<b>Huntley</b>	<b>01452 830303</b>

<b>Lorry Cranes</b>	<b>01380 733513</b>
---------------------	---------------------

<b>Country Store</b>	<b>Marlborough</b>	<b>01672 518408</b>
	<b>Knockdown</b>	<b>01454 238181</b>

<b>Construction</b>	<b>01672 512328</b>
---------------------	---------------------

<b>Energy, Fire &amp; Security</b>	<b>01380 726656</b>
------------------------------------	---------------------

<b>Machinery Imports</b>	<b>01264 811260</b>
--------------------------	---------------------

**www.thwhite.co.uk**  
© T H WHITE Group 2020 E&OE  
Nursted Road Devizes Wilts SN10 3EA  
**01380 722381**  
To unsubscribe from T H WHITE Group marketing, please visit [www.thwhite.co.uk/unsubscribe](http://www.thwhite.co.uk/unsubscribe)

**WHITE'S WORLD ONLINE TO SIGN UP FOR WHITE'S WORLD** as a digital edition, please visit [www.thwhite.co.uk/sign-up](http://www.thwhite.co.uk/sign-up). We will then send you a monthly email with links to all the top stories and offers. You will have the option to unsubscribe at any time.

**COVID-19 UPDATE**

For the latest updates from each of our divisions please visit [thwhite.co.uk/coronavirus](http://thwhite.co.uk/coronavirus).

**HARVEST BREAKDOWN & SERVICE**

There's enough to think about at harvest time without worrying whether your equipment is going to let you down.

T H WHITE Projects can help with regular servicing and maintenance of driers, cleaners, conveyors,

augers and elevators to ensure they are ready for the busy period. We can supply and fit parts for most makes of equipment, new or old.

If you do suffer a breakdown we can be on the spot fast to get you back in action. Just call our hotline.

**Harvest emergency hotline (24/7): 07919 394602**

**T H WHITE PROJECTS**

Nursted Road  
Devizes  
Wiltshire SN10 3EA  
**01380 723040**

[www.thwhiteprojects.co.uk](http://www.thwhiteprojects.co.uk)  
[serviceprojects@thwhite.co.uk](mailto:serviceprojects@thwhite.co.uk)

**PROJECTS**

**CUTTING THE MUSTARD** Continued from page 1



The mustard milling system and associated packaging lines, supplied by Satake, have been housed in a building of over 7,500m<sup>2</sup>. This is expected to process approximately 5,000 tonnes of mustard seed per annum, plus 1,000 tonnes of fresh locally grown mint leaves which are processed separately to enable the production of a quality mustard flour and blended mint.

The building required approximately 250 tonnes of fabricated steelwork across the elevated floors, stairways, machinery connections and access platforms, all of which were accommodated within the overall design works to ensure a safe working environment once in production.

A dedicated high voltage cable was routed to a new transformer on-site, while the electrical installation around the complex included a further 15km of low voltage cabling, 800m of containment and wiring for all the necessary

lighting.

A fully automated PLC & SCADA Control System – containing approximately 250 outputs/550 inputs and 20 analogues – manage the entire operating process through a software and data acquisition package, controlling everything from intake through to the milling and packing areas.

The newly constructed facility was successfully completed, commissioned and handed over to Condimentum by T H WHITE Projects during quarter two in 2020 and is currently meeting its predicted production levels as a modern state of the art mustard and mint milling operation.

T H WHITE Projects specialises in cereal processing & storage solutions of all sizes, from small farm installations to

large commercial/ industrial bulk facilities, taking each project from conception to completion. If you have a scheme you would like to talk about, please do contact us on 01380 723040 or email [projects@thwhite.co.uk](mailto:projects@thwhite.co.uk)



**MACHINERY IMPORTS**

**POWER AND PERFORMANCE WITH FERRIS PETROL MOWERS**

In the past, diesel was always a firm favourite among professional groundcare contractors – reliable, cheap to fuel, powerful and long lasting. Petrol-powered machines just were not in favour.

But now, with new emissions legislation, a focus on greener energy across the UK and some Councils looking to remove all diesel-powered machinery from their cities, petrol is a viable option for even the toughest maintenance tasks.

Ferris has spent years perfecting the most efficient, powerful and productive ride-on professional mowers and now supplies some of the most durable and comfortable petrol machines in the industry.

The 52" IS@2100Z features a Vanguard EFI petrol engine, offering 25% better fuel economy than a traditional carburettor engine, increased power, optimised starting in all conditions and better engine performance. It also benefits from the Vanguard Oil Guard™ system, a first of its kind solution and exclusive to Ferris. This system extends the interval between oil changes from 100 hours to 500 hours, saving time and money on oil changes and increasing your productivity.

New in 2019, the Ferris ISX™800



with 52" deck offers ultimate power and productivity, with a 27hp Commercial Turf Series petrol engine featuring an ultimate 5-step dust and particle filtration system with integrated cyclonic air cleaner. Users of the ISX™800 also



benefit from the first-of-its-kind double wishbone suspension system, which enables complete independent terrain-following movement of the deck for a smooth ride and supreme cut quality.

For customers who engage in light commercial mowing, the 48" Ferris 400S is the ideal work companion. With a 23hp Commercial Turf Series petrol engine, four deck configuration options and Ferris' patented suspension technology, your working day will be comfortable, efficient, productive and clean.

Finally, for those looking to stand and mow, or to speed up a job usually completed with pedestrian mowers, the Ferris SRST™Z1 offers premium productivity and speed with the power of petrol. With a 19hp Kawasaki petrol engine, comfortable suspended operator platform, 36" or 48" rear discharge cutting deck options and a narrow footprint of just 92cm wide, it is perfect for maintaining areas around obstacles, in tight spaces or through narrow access ways.

Ferris dealers across the country are providing no-obligation demonstrations for customers right now. To arrange yours and try the power of petrol with a Ferris, find and contact your nearest dealer at [www.ferrismowers.co.uk/find-a-dealer](http://www.ferrismowers.co.uk/find-a-dealer).

**BOOK NOW FOR THE BEST DEALS ON WINTER SERVICE**

**AGRICULTURE**



There has never been a better time to take advantage of our winter service programme which offers some of the best early-bird discounts in the market.

If you book your equipment in now, our manufacturer-trained technicians will ensure that it is returned in top condition ready for next season.

To qualify for these great discounts work must be invoiced by the dates shown and must also have parts and service work included.

**GOLD**  
For orders placed before 30 November 2020, invoiced before 26 February 2021  
**20% OFF**  
Labour and In-Stock Parts

**SILVER**  
For orders placed before 31 December 2020, invoiced before 31 March 2021  
**15% OFF**  
Labour and In-Stock Parts

**BRONZE**  
For orders placed before 15 February 2021, invoiced before 30 April 2021  
**10% OFF**  
Labour and In-Stock Parts

**GROUND CARE**



We're offering a **BEST PRICE PROMISE** on all Winter Servicing from T H WHITE Groundcare.

Contact your local depot to negotiate the **VIP price** for your service today. Great deals available and our trusted and experienced Groundcare specialists will service all makes and models.

You can request a Service online at: [www.thwhitegroundcare.co.uk/get-in-touch](http://www.thwhitegroundcare.co.uk/get-in-touch) or call your nearest branch:

**Knockdown:** Tim Counsell – 01454 238181  
**Reading:** Simon Paget – 01189 760088  
**Redditch:** Nick Maxwell – 01527 597770  
**Stockbridge:** Simon Paget – 01264 811260

Applicable to all enquiries made for bookings between 1 October 2020 and 31 March 2021

AGRICULTURE

# FOCUS ON FEEDING & BEDDING

As the days shorten heralding winter weather, we have gathered this roundup of some of our leading brands that can help to make your life easier while your animals are indoors.

First off we have two of the most useful Manitou telehandlers for which

we have highlighted some of the key features. A tough and reliable telehandler is a basic essential whatever size or type of farm you operate, but especially for livestock farming. Whether moving bales, loading feeders or straw blowers, clearing muck, or for a host of general

uses, one of the most versatile machines is the Manitou MLA-T 533-145 V+ pivot steer.

Since its launch at Agritechnica in 2017 it has proved its worth as a powerful, highly manoeuvrable machine offering exceptional levels of driver comfort. Its slim dimensions and small turning circle allow it to enter confined spaces, while excellent boom control and powerful tearout force place it among the most capable telehandlers in its class. Some of the points we think set it apart are shown here, but you really need to try it for yourself!



**Manitou MLA-T 533-145 V+**



**FINANCE FOR ALL MANITOU MLT AND MLA-T MODELS**  
**1 + 2 annual payments at 0.49%**  
**3 + 33 monthly payments at 0.99%**  
**OFFER ENDS 31 OCTOBER 2020**  
 Speak to your rep for full details, T&Cs



**Manitou MLT 630-105**

There are times when simple is best, and that can particularly apply to the challenging conditions in which agricultural machinery often has to operate.

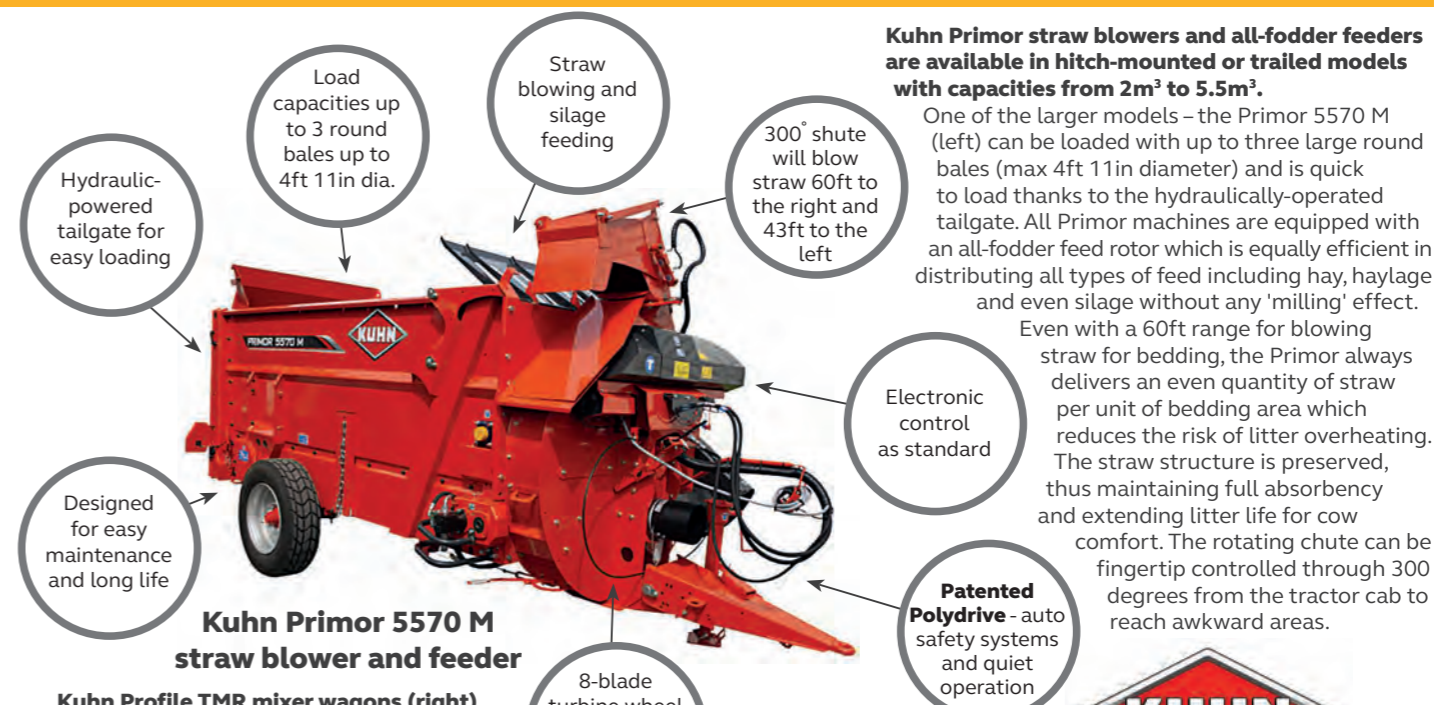
The Manitou MLT 630-105 is a rugged, rigid chassis telehandler capable of lifting a 3,000kg load to more than 6m. Four-wheel steering makes it highly manoeuvrable. A single piece cab door

offers easy access to the well thought-out cab which features armrest-mounted joystick control.

The 101hp Deutz Stage IV diesel engine is mounted on the right side making it possible for a single opening panel to give access for easy maintenance and filter changes.



## Our pick of the top kit to make your life easier as animals are brought inside



**Kuhn Primor 5570 M straw blower and feeder**

**Kuhn Primor straw blowers and all-fodder feeders are available in hitch-mounted or trailed models with capacities from 2m<sup>3</sup> to 5.5m<sup>3</sup>.**

One of the larger models – the Primor 5570 M (left) can be loaded with up to three large round bales (max 4ft 11in diameter) and is quick to load thanks to the hydraulically-operated tailgate. All Primor machines are equipped with an all-fodder feed rotor which is equally efficient in distributing all types of feed including hay, haylage and even silage without any 'milling' effect.

Even with a 60ft range for blowing straw for bedding, the Primor always delivers an even quantity of straw per unit of bedding area which reduces the risk of litter overheating. The straw structure is preserved, thus maintaining full absorbency and extending litter life for cow comfort. The rotating chute can be fingertip controlled through 300 degrees from the tractor cab to reach awkward areas.

**Kuhn Profile TMR mixer wagons (right) are among the most advanced in the business.**

Not only will they rapidly chop whole bales and fibrous product down to the optimum length specified by nutritionists, they also mix quantity of ration component using accurate weighing system to match the precise needs each animal. The perfect rations results in a healthier reducing metabolic disorders. Available in capacities from 4-20m<sup>3</sup>, the Profile features either a single or auger depending on size, for high performance when chopping long fibres, as well as preserving wetter fodders such as maize silage.

The PROFILE 2CL mixer wagon features Kuhn's K-NOX technology as standard in which the mixing augers are built entirely from an alloy containing stainless steel and Ferrites. This makes them highly resistant to acidic material, wear and abrasion. K-NOX augers are an option on the 2 CS mixer wagon.



**Kuhn Profile 2CS TMR mixer wagon**

**For more information about Manitou telehandlers, Kuhn Primor blowers and feeders, or Profile TMR mixer wagons, either contact your T H WHITE sales representative who will be happy to guide you through the choices or arrange a demo, or request a demo online at [www.thwhiteagriculture.co.uk/get-in-touch](http://www.thwhiteagriculture.co.uk/get-in-touch).**

**More solutions over the page >>**



**AGRICULTURE FOCUS ON FEEDING & BEDDING**



From Kverneland, the trusted and long-established Norwegian manufacturer of agricultural implements, sold from our Hereford branch, we have selected the 863/864 range of bale chopper feeders and the Siloking trailed compact diet feeder range.



**1 + 2 annual payments**  
**2 + 22 monthly payments**  
**OFFER ENDS 30 SEPTEMBER 2020**  
 Speak to your rep for full details, T&Cs

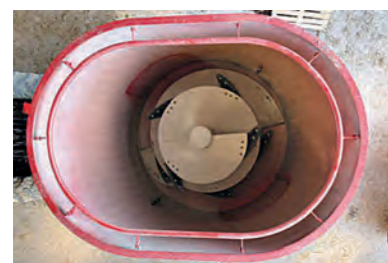
**Kverneland Siloking trailed compact diet feeders** (below) are ideal for use in more constricted spaces where their short chassis makes them highly manoeuvrable. With a capacity up to 15m<sup>3</sup>, they use a single turbo auger to chop and mix the feed. While these compact models are perfect for smaller livestock farms, Kverneland also produces much larger diet feeders with two and even three turbo augers, including truly massive feeders up to 45m<sup>3</sup> capacity suited to units of c.600 cows. Completing the range are self-propelled diet feeders – all details from our Hereford branch.



**Kverneland 864 bale chopper**

The Kverneland 864 bale chopper (above) has grown its dimensions in all aspects with a massive 4.2m<sup>3</sup> chamber size. It handles 2.1m diameter round bales and its longer body design provides even better support and stability for large square bales.

With a completely redesigned drum and flywheel configuration, it offers significantly higher throughput than earlier designs and is capable of impressive blowing distances of up to 25m.



The Siloking compact range has a single vertical turbo auger



**Kverneland trailed compact Siloking vertical auger mixer wagons**



**Kverneland feeding and bedding equipment is available from T H WHITE Hereford only. For more information on any Kverneland item, or to arrange a demo, call Ben Linton on 07495 114479, Will Farr on 07495 114325, or go to [www.thwhiteagriculture.co.uk/get-in-touch](http://www.thwhiteagriculture.co.uk/get-in-touch).**

**MACHINERY IMPORTS**  
**STAGE 5 DIESEL JENSEN WOODCHIPPERS IN STOCK & READY TO TAKE AWAY**

We are pleased to offer a selection of low emission diesel Jensen woodchippers, currently in stock and ready for purchase through your local Jensen dealer.



The Jensen A530L, updated in 2020 with brand new Stage 5 certified diesel engine, offers supreme productivity in a compact, 6" capacity woodchipper.



Meanwhile, the larger capacity Jensen A540, again updated this year with a new Stage 5 diesel engine gives users exceptional power and performance with eco-friendlier credentials. With an enlarged 240 x 200mm aperture, this 8" chipper offers industry leading productivity in even the most challenging environments.

Find your local Jensen dealer to order your machine today at [www.jensenchippers.co.uk/dealers](http://www.jensenchippers.co.uk/dealers).

**T H WHITE EXCLUSIVE**



**0%**  
**2 payments down, 6 months deferred + 22 monthly payments on 'in-stock' equipment**

Available on a wide range of Pöttinger HIT Tedders, NOVACAT and NOVADISC mowers, TOP rakes and LION power harrows until 31 October 2020. T&Cs apply.

**PÖTTINGER** From our FROME and STOCKBRIDGE branches.  
**T H WHITE**  
**PRO AGRI**

**SEPTEMBER OFFERS**

**M18 FUEL™ ¼" HEX IMPACT DRIVER**



**£112**



This impact driver features extremely compact design with a total length of just 117 mm for access into tight spaces. Higher power efficiency under load - outstanding torque of 226 Nm. **Body only. Batteries & chargers available separately.**

**HL13 SUPER SPOT LED RECHARGEABLE HEAD TORCH**



The Clulite H13 head torch has a 250m beam which lasts up to 7 hours with a 5 hour recharge time. Weighs only 220g.

**£32**



**CLUB-FL CLU-BRITER FLAME HANDHELD SPOTLIGHT**

Powerful 1,000 lumens with a 700m spot beam and comfortable trigger grip.

**£86**

**McCONNEL HEDGE & VERGE CUTTING FLAILS From £7.50**

The **F14 flail** delivers a powerful and precise cutting action for all who want a versatile flail which can handle hedge cutting and verge-mowing. The original **F10 Hedge flail** is cast from high strength ADI material as is reversible allowing cutting in both directions for a longer life.



**CROP PACKAGE SOLUTION**



Quality product  
 Price-competitive • Interest-free plan

**ORDER EARLY FOR NEXT SEASON**



**GRASS OR HAY**

**T H WHITE**  
**AGRICULTURE**

FROM T H WHITE AGRICULTURAL PARTS STORES  
 PRICES SHOWN EX-VAT For current offers see:  
[www.thwhiteagriculture.co.uk](http://www.thwhiteagriculture.co.uk)

AGRICULTURE



CH7.70

# COMBINING THE BENEFITS

**New Holland has set a new benchmark for mid-range combine harvesters with the introduction of the CH7.70 – the first in a new line that introduces the concept of 'Crossover Harvesting'.**

By bringing its outstanding Twin Rotor® separation technology together with its proven large diameter threshing drum, New Holland now offers users the best of both worlds in a machine designed to deliver up to 25% higher throughput than a conventional combine in this segment.

The two-drum threshing system features a 600mm diameter drum for gentle threshing that delivers very high grain and straw quality. The real benefit comes in combining this with a specially designed new version of New Holland's Twin Rotor® separation technology. The 21-inch, 3.45-metre-long Twin Rotor system

provides the largest separation area in the segment, at 2.9m<sup>2</sup>.

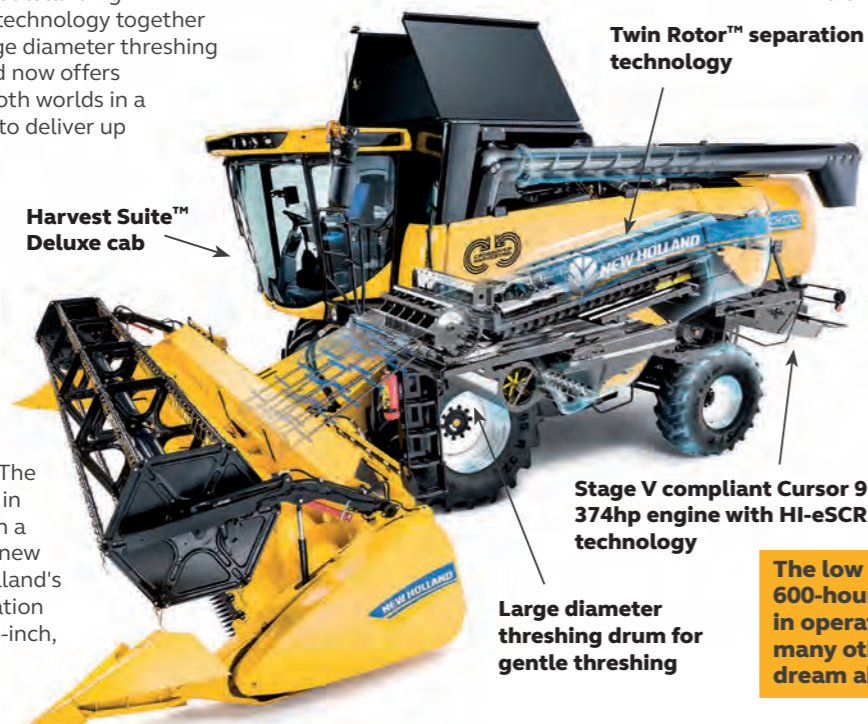
Pioneering the Crossover Harvesting brand, the new CH7.70 sits between New Holland's mid-range conventional, and

flagship rotary models, with a machine that is equally at home in all crops and conditions, delivering consistent, high performance in all conditions for arable farmers and contractors alike.

The CH7.70 features the proven Cursor 9 engine that develops 374hp – 34hp more than the CX6.90 – for powerful and fuel-efficient performance in all conditions. Patented HI-eSCR 2 technology enables it to comply with Stage V emissions standards too. With only four greasing points, daily maintenance is quick and simple and the large service door on top of the straw hood door provides easy access.

Only minimal changes in threshing setting are needed when switching between different crops,

**The low fuel consumption and 600-hour service intervals, result in operating costs that users of many other combines can only dream about.**



which can be carried out in less than 20 minutes.

The CH7.70 can be equipped with a range of Varifeed™ headers of up to 9.15 metres, including a brand-new 8.53-metre Varifeed version specifically developed for this range. The front face of the feeder housing can be mechanically adjusted to ensure perfect alignment with the header, thereby optimizing the angle for each different header to deliver smoother, layered crop flow, ensuring the best flow whatever the crop.

The cleaning capacity of the CH7.70 is perfectly matched to its high threshing and separation throughput. It features the unique New Holland Triple-Clean™ cascaded cleaning system, which boosts cleaning capacity by up to 15% with the addition of an extra cascade in the centre of the grain pan. The double flight cross auger also transfers grain to the elevator faster

Working on sloping ground is no problem for the CH7.70 either, thanks to the SmartSieve™ system, which automatically compensates for side slopes up to 25%.

For sustained performance in hilly conditions, a Laterale version, which uses a robust automatic levelling system, provides transversal slope correction of up to 18% on both sides.

Driver comfort and has not been overlooked either. The 3.12m<sup>3</sup> Harvest Suite cab is much larger than its nearest rival, and you can enjoy all that space in sound-insulated and air conditioned comfort. The wide, curved glass area offers a perfect view of the entire header and unloading spout.

Like all New Holland combines, the CH7.70 is covered by the standard three-year extended warranty (1,200 engine hours) which applies to the engine, driveline and after-treatment system. Protection like that is enormously valuable in providing peace of mind for the user, not only in terms of confidence in the exceptional quality of the product, but also in providing clear 'Total Cost of Ownership' for the buyer.

If you would like to find out more about the Crossover Harvesting concept and why the New Holland CH7.70 could be right for you.



Twin Rotor™ separation technology



Triple Clean™ cascaded cleaning system



Harvest Suite™ comfort cab

## HARVEST 2021: ORDER NOW FOR THE BEST TERMS



**Big kit has long lead times and by thinking ahead you will be able to ensure not only that machinery you need is built and delivered on time, but ordering early will allow you to specify all the exact options you want.**

And, because early orders also help our business planning, we are able to offer some great discounts, finance plans and other incentives that won't be available later.

If you want to be at the head of the queue, talk to your T H WHITE sales representative now who will be happy to advise on the best choices for your business and ensure your machinery is reserved on the very best terms available.

## 0% FINANCE PACKAGES UNTIL 30 SEPTEMBER 2020 ONLY!

**T8 T7 HEAVY DUTY – STAGE V T7 LWB – STAGE V T7S T7 SWB – STAGE 4B T6 ELECTRO/DYNAMIC/AUTO COMMAND**

**BOOMER 25-50**



**1+4 Annual payments or 4+44 Monthly payments @ 0%**



**1+2 Annual payments @ 0%**

**Business users only. Offers valid until 30 September 2020. Terms & conditions apply – full details available on request. Alternative finance options are available.**

Images are for illustrative purposes only. Accessories not included.



# COUNTRY STORE

## HT2410E CORDLESS 60CM HEDGE TRIMMER EGO

This 60cm hedge trimmer from EGO features a 26mm blade gap with single knife-edge cutting action. The laser cut, diamond ground cutting blades allow for cleaner and more precise cutting. A robust metal alloy brushless motor housing and gearbox will give you all the power you need, without the vibration, fumes and noise of a petrol engine.



**£144.99 inc VAT**

Battery and charger available separately.

## Seeland READY FOR THE SHOOTING SEASON

### Climate quilt jacket

This highly insulating, lightweight jacket is designed with an active fit. The lining retains insulating properties even when wet, and the jacket will happily withstand being packed up small.



**£69.99 inc VAT**

### Advanced quilt jacket

The combination of lining and quilted fabric means that the jacket retains air and body warmth. Wax finish, zip and press stud closures, hand warmer pockets, shoulder pads.



**£99.99 inc VAT**

### Härkila Grove GTX

Versatile brown shooting boot with a waterproof and breathable GORE-TEX-membrane.



**£159.99 inc VAT**

**T H WHITE COUNTRY STORE**

47 LONDON ROAD, MARLBOROUGH SN8 2RN

[www.thwhitecountrystore.co.uk](http://www.thwhitecountrystore.co.uk)

Offers valid until 30.9.20

## AGRICULTURE INNOVATIVE MAIZE SOLUTION



James Bell (left) with Andy Taylor from T H WHITE and the CR9080 combine ready for maize harvest

James Bell has built a reputation around the Tetbury area for doing things a little differently and taking an innovative approach to farming.

As well as running his own farm at Shipton Moyne where his family has farmed for around 40 years, he has grown the business through a series of amalgamations, providing what he likes to call 'Farming Solutions' to other farms in the locality. It's a form of contracting, but not in the usual way.

Instead, James offers his services where other farmers may be struggling to cope with the workload in a particular season, or perhaps where seasoned farmers want to stand back a little but not retire completely. It's a system that has worked efficiently, enabling farmers in the area to make the most of their land without the investment needed for machinery that may not be utilised full time.

To support his activities James has built up an impressive line-up of machinery and has been a customer of T H WHITE for many years. Much of the equipment in his shed today has been supplied by T H WHITE through Knockdown-based sales rep Andy Taylor, including two Väderstad Tempo maize drills, five New Holland crop cutter balers, as well as New Holland combine and forage harvesters.

Sometimes an item from T H WHITE's extensive selection of quality used machinery fits the bill perfectly, and this was the case recently with a Ziegler hydraulic folding maize header. In typical pioneering spirit James is planning to use the header on his CR9080 tracked combine instead of his forage harvester, a trend that is becoming increasingly popular.

"With a forager the whole crop is harvested," says James, "but with a combine you can just take the grain from the cob and leave the rest in the field. That gives you a quality feed to add to forage."

"Using an adaptor plate the same header can be fitted to the forage harvester and the cob can be chopped for maize silage. Either way you can get the yield you want from the maize crop, which also makes a good break crop instead of growing rape"

If you have a maize crop ready for harvest this autumn anywhere within 30 miles range of Tetbury you might like to ask James to bring it in for you. Call him on 01666 502486.

And, if you are looking for top value, quality used and stock equipment, why not take a look at what T H WHITE has on offer? There's a selection on the back page of White's World and you can view the whole stock at [www.thwhiteused.co.uk](http://www.thwhiteused.co.uk).

## AGRICULTURE

### MLT 737-130 PS+ ST4



### MLT 635-140 V+



## JUST LANDED FROM THE WORLD OF MANITOU!

Two of the most versatile Manitou telehandlers have just landed at T H WHITE Agriculture, in stock and ready to tackle a huge variety of tasks on your farm.

First up is the new Manitou **MLT 737-130 PS+ ST4**. Dedicated to agricultural material handling, it has a lifting height of 6.88m and a lifting capacity of 3.7t, as well as being designed for COMFORT! It has a completely new cab featuring easy access, optimal visibility, a JSM® (Joystick Switch and Move) mounted on a floating armrest, Double Switch Buttons (DSB) and soundproofing ideal for long periods of use. Strong performance is delivered by the 129 hp Deutz engine and Powershift Plus transmission. Limited slip differential, ground clearance of 41 cm and automatic dust removal system for the radiators are perfectly adapted to

intensive agricultural use.

Another all-rounder is the Manitou **MLT 635-140 V+** which scores on many of its technicalities, too – such as its 3.5t lift and 6m lift height from a compact frame, plus the same JSM® joystick control as its larger brother.

Anyone who has tried a Manitou telehandler will testify not only to the rugged performance of these machines,

but also to their incredible adaptability. The secret lies in the huge range of



The Bale Clamp Intensive will handle two round bales or three rectangular bales at the same time.



The Round Bale Clamp is designed to fit the shape of every bale. A powerful double effect cylinder allows the manipulation of very heavy bales.

**MANITOU**  
HANDLING YOUR WORLD



The Agricultural Multi-Function Grab Bucket is one of the most useful Manitou attachments. Opening in excess of 90°, its powerful jaw allows working flush with walls. It's perfect for handling wet manure, silage – a true 'must-have' tool for livestock farm.



The Big Bag Handler is a strong tubular structure with a lifting capacity up to 2,400kg (four loading points each with 600kg capacity).



The Pickup Sweeper will clean up to 2500m<sup>2</sup> in 10 minutes, sweeping and collecting in one operation even where the ground is not flat.

GOLF & UTILITY

# FUME-FREE OPERATION IN GLASSHOUSES

When you are producing more than 1.5 million plants a year and supplying top name garden centres across the UK, you need a thoroughly reliable system for gathering each diverse plant order from the nursery and bringing it to the distribution point for onward transport.

At the Bransford Webbs Plant Company near Worcester a 24-acre site has been developed over many years since the 1940s, of which today over 10 acres is under glass with much of the rest covered by poly-tunnels. Plant orders often comprise specimens from opposite ends of the site and in order to gather them quickly and efficiently Bransford Webbs has been a long term operator of Cushman electric utility vehicles, or UTVs. Working extensively in climate-controlled areas under glass, it's particularly important to minimise or eliminate emissions.

Financial Director Richard Colbourne explains: "Years ago we used to have some petrol powered UTVs and we have also used mini tractors from time to time, but even in the relatively large enclosed spaces of our greenhouses vehicle fumes can be very unpleasant for the workforce.



Hauler Pro would be an excellent solution for Bransford Webbs – the extra power compared to the earlier 48-volt models is ideal for trailer-hauling tasks in the nursery, and with a 50-mile range from one charge it has the capacity to work all day uninterrupted. It's remarkable how much work it can do on a single charge.

As well as being economical to run, the Cushman Hauler Pro also features an enhanced controller unit which provides more finesse in the controlling the machine's powerful acceleration – an important factor when hauling trailers laden with plants where any sudden

So, back in 2005 we made the decision to use electric pick-ups for collecting plants around the nursery and we currently have a fleet of five.

"When the oldest vehicle came up for replacement we were keen to see whether the latest technological developments could give us a vehicle that was even more efficient."

Luckily for Richard, T H WHITE's specialist Golf & Utility business – a subdivision of T H WHITE Groundcare – and its resident experts were there to advise. They knew that the 72-volt Cushman

jolt needs to be avoided. Other advances include simpler diagnostics and battery state monitoring.

The verdict from Bransford Webbs? "The Cushman Hauler Pro is the plantsman's perfect pony," Richard Colbourne enthused.

The T H WHITE Golf & Utility team can help you with a vast range of applications where there is a need for efficient, green and low cost haulage. To discuss the possibilities contact your T H WHITE Groundcare representative or any Groundcare branch listed on page 2.

## Perfect for agricultural and construction tasks



0% finance on New Holland compact loaders, skid steer loaders mini crawler excavators and backhoe loaders until 30.9.20.

Speak to your T H WHITE rep today!

**NEW "TH" RANGE. RISE AND SHINE.**

**NEW HOLLAND AGRICULTURE**

5+55 monthly payments @ 0% until 30<sup>th</sup> September 2020.

1+2 Annual payments or 2+22 Monthly payments @ 0%

Available for business users in the UK only. Terms and conditions apply. **Speak to your T H WHITE rep today!**

DAIRY

# DeLaval Milking Robot VMS Series

Thinking of investing in a DeLaval VMS milking robot. We can now offer 0% finance when you purchase.

**0% Finance Available**



Teatspray **99% hit rate\***

No more teaching teat coordinates

**10% Higher capacity\***

**99.8% Attachment rate\***

\*Data collected on test farms and pilot farms. Data compared to DeLaval VMS™ Classic. Results may vary and are not guaranteed. \*\* Data from VMS V310 pilot farms.

**Iobac**

Iobac is an iodine based teat disinfectant that can be used before and after milking. It offers protection against a broad spectrum of mastitis causing micro-organisms.



- Containing 1500 ppm iodine in ready to use solution
- Excellent disinfecting properties
- Formulated with pH close to teat skin
- Available in concentrated or read to use solution

**20 Litres: £29 + VAT**  
Also available as a concentrate

**C-AlkaClean**

A chlorinated alkaline cleaning product for milking and cooling equipment that effectively removes milk residues. An effective cleaning routine will contribute to a premium milk quality and reduce the risk of bacteria growth in the milking installation.



- Alkalinity to address fat
- Chlorine to remove protein residues
- For use in alkaline dominant routines or alternate cleaning routines
- Effective in soft to medium water conditions

**20 Litres: £15 + VAT**

## Milk monitoring: upgrade your milk meters or flow indicators



**DeLaval yield indicator FI7**

When milk yield from each cow is monitored accurately, you gain key data for efficient herd management. This compact yield indicator provides:

- A robust design with no moving parts
- Milk yield available cow side
- Additional monitoring of liner slips, kick offs and cluster inlet blocks\*\*

Terms and conditions apply; \* Blood and Conductivity function not available on MP100 series.\*\* Not all functions available on all systems.



**DeLaval milk meter MM27BC**

This is a highly accurate ICAR approved milk meter which also monitors any blood traces in the milk, conductivity levels, kick-off and air entry in the liners. It offers fast milk yield monitoring and better control of cow health.

- Milk is measured continuously
- Monitors blood presence, milk conductivity and milk out performances\*
- It is not dependent on a central computer.
- Low service cost – no movable parts.

FEATURE	F17	MM27
ICAR Approved		✓
Sampling available	✓	✓
Blood and conductivity detection		✓
Maintenance-free	✓	
Additional information		✓

Contact your local THW Dairy branch for capital sales Frome: 01373 465941 and Huntley 01452 830303 or your local van sales rep for parts and sundries.

**See us at the Dairy Show!**  
Bath & West Showground, 7 October 2020  
See [bathandwest.com/the-dairy-show](http://bathandwest.com/the-dairy-show) to confirm go-ahead and latest details.

AGRICULTURE

HEADS UP FOR THE MAIZE HARVEST



**New Holland supplier Kemper makes some of the best rotary maize headers in the business. Fit one to a New Holland Forage Cruiser and you have a powerful combination.**

For 2020 T H WHITE is running an FR650 Forage Cruiser with a 10 row Kemper header attached as a demo unit.

It will be available from mid-September for demonstrations anywhere across the counties covered by T H WHITE, so if you would like to experience it in action just contact your local sales rep who will book a demo for you and offer guidance on the options. Be prepared to be impressed!

**1+2 OR 2+22 @ 1.5%**  
for new Ktwo Bio and New Evo machines



**Ktwo Evo** twin vertical beater rear discharge muck spreaders are designed to cope with the most demanding conditions. Capable of spreading a wide range of materials from sludge products to chicken litter, these spreaders offer a versatility and build quality that is unique to the Ktwo Evo. Available in capacities of 14-36 tonnes (21.5-36.3m<sup>3</sup>) and with a range of optional extras, these machines also feature an enhanced standard specification.

**Ktwo Bio** twin horizontal beater rear discharge muck spreaders are designed with the most accurate of applications in mind. Capable of spreading a wide range of materials, these spreaders are the perfect choice when spreading higher value manures at lower rates and wider working widths. Available in capacities of 14-36 tonnes and with a range of optional extras, these machines also feature an enhanced standard specification.



**Machines must be ordered by 31 October 2020. Based on 50% RRP. Business users only. Terms and Conditions apply. Contact your T H WHITE Agriculture sales representative.**



2020 EX-HIRE FLEET

Nearly-new tractors from our 2020 hire fleet are now becoming available, including:

**New Holland:** T6.145DC, T6.155DC, T7.225AC, T7.230PC SWII, T7.245AC, T7.270AC.

**Case IH:** Puma 175 CVX, Puma 200 CVX, Puma 200 MC, Puma 220 MC.

For the latest availability contact your sales representative.



AGRICULTURE  
CONSTRUCTION

COMPACT LOADERS

Manitou compact loaders are highly manoeuvrable and are ideal for Dairy Farms, Equine Yards and Building sites.

NEW **Manitou MLA 3-35 H**

Articulated Loader, Cab Enclosure, Heater, Radio, Road Lights, Dual Outside Mirrors, All-Tach Quick Attach System (narrow), 10.0/75-15.3 AS Tyres. **£POA**



PLUS A SUPERB EX-DEMO **Manitou MLA 3-35 H**

Articulated Loader, high-spec ideal for construction sector, Pallet Forks, Cab Enclosure, Heater, Door, Windows, Radio, Speakers & Hardware, Road Lights, Dual Outside Mirrors, Power-A-Tach Hydraulic Quick Attach System (narrow), 31x15.5-15 AS Tyres. **£26,250** Available October.

NEW **Manitou 1900 R** Skid Loader

Cab enclosure, Aircon, Joystick, Hydraglide, Hi-Flow aux Hydraulic circuit, Easy Link Module, Multi-Tach Quick Attach System, Sliding side windows, 12.00x16.5 10-Ply Tyres. **£POA**



Contact your sales representative.

AGRICULTURE

HARDWORKING **HONDA** HEAVYWEIGHTS

When it comes to choosing a hard working ATV or UTV, few brands deliver value for money and features like a Honda.

From the entry level TRX420FA to the TRX520FA and the Pioneer, there is a utility machine to suit your task and we've some great offers too!

Let's take a look at the September 2020 line up:



**Honda TRX420FA6 Fourtrax** in red, above

**Offer price £7,050.00** + vat

Power steering  
Independent suspension  
Disc brakes  
Automatic and electric gearchange  
Quick skip reverse trigger  
2 and 4wd selection



**Honda TRX520FM6 Foreman**

To order it in GREEN, as above

**Offer price £7,750.00** + vat

Power steering  
Independent suspension  
Disc brakes  
Manual gear change  
Switchable 2 and 4wd with difflock

To order it in RED Offer price £7,650.00 plus vat



**Honda TRX520FA6 Foreman**, above

To order it in RED **£7,985.00** + vat

To order it in GREEN **£8,100.00** + vat

Power steering  
Independent suspension  
Disc brakes  
Automatic and electric gearchange  
Switchable 2 and 4wd with difflock



**Honda 700 Pioneer two seater**

**Offer price £11,500.00** + vat

Independent suspension  
High and low range  
Quick skip reverse trigger  
Disc brakes, Safety belts  
Automatic Transmission  
Switchable 2 and 4wd with difflock  
Tipping bed  
Fitted half cab with roof, windscreen and wash wiper.

All these models are supplied with a Free ATV rider training, towball, two-year warranty, installation and optional GPS tracking device. Finance is available too.

Optional road lighting kits available for Agricultural use from £695.00 + vat.

OUR ATV SPECIALISTS

To help you find exactly the ATV or UTV that you need, please contact one of our ATV specialists:

**FROME** Stuart Crook, 07831 249489 sjc@thwhite.co.uk

**KNOCKDOWN** Marley Lawrence, 07789 206723 marley.lawrence@thwhite.co.uk

**MARLBOROUGH** Callum Rea, 07860 712963 callum.rea@thwhite.co.uk

**TODDINGTON** Tim Rochfort, 07973 911934 tim.rochfort@thwhite.co.uk

Our team will be only too happy to help and advise you.

READY FOR THE POWER?



EXTRA POWER FOR FREE

From now until the end of September you can get a Case IH Puma 240 CVX for the same price as an equivalent specification Puma 200 CVX.

Contact your T H WHITE Pro Agri salesman for all the details





# TOP PICKS IN PRE-OWNED AGRICULTURAL MACHINERY



**REF: 61119700**  
2017 CR8.90 Combine Harvester, 30ft varifeed header, twin side knife, guidance ready, twin pitch rotors, auto rotating hitch.  
**£185,000** Contact **PC**



**REF: 61118820**  
2013 New Holland CR9080S Combine Harvester, 24" tracks in ex-con, AGR ready  
Eng/Drum Hrs: 1567/1270  
**£124,000** Contact **PC**



**REF: 71119920**  
2016 New Holland FR600 Forager, crop processor, front/rear wheels 710/75R34 / 540/65R30, immaculate.  
Eng/Drum Hrs: 2034/1471  
**£128,000** Contact **AT**



**REF: 61117978**  
2019 New Holland T7.260 AC, T4B engine, front lkg command, comfort pack, 640/65R28 fixed, 650/65R42 fixed rims  
**£105,000** Contact **RL**



**REF: 71118161**  
2018 New Holland T7.260, front linkage, front PTO, guidance ready, warranty & 0% finance available.  
**£95,000** Contact **AT**



**REF: 11119260**  
2014 New Holland T7.200 AC, full guidance, full dealer service history, full front & rear suspension  
**£42,000** Contact **CD**



**REF: 71120080**  
2015 New Holland T7.235 Power Command Classic, 50kph, 4 spools, air brakes, front linkage, PTO  
**£58,000** Contact **AT**



**REF: 71120075**  
2016 New Holland BB1290 Baler, 120 x 90 bale size, large steer tandem, hyd brakes, moisture sensor  
**£78,000** Contact **AT**



**REF: 71118051**  
2015 New Holland RB150 Super Feed Roll Belt Baler, 3500 bales, great condition  
**£24,500** Contact **AT**



**REF: H1118523**  
2017 Case IH CA7240 Combine, 25' varifeed header + Shelbourne trailer.  
Eng/Drum Hrs: 373/273  
**£172,000** Contact **CM**



**REF: 61118069**  
2011 Case IH JX90, immaculate condition for hours/age  
**£14,000** Contact **RL**



**REF: 1120728**  
2017 Manitou MLT 625 Premium, FSH, 90% tyres, 750 hours, Immaculate.  
**£37,000** Contact **MH**



**REF: H1117550**  
2015 Manitou MLT 735 PS Elite, Manitou headstock, hyd locking pins, CRD, aircon  
**£42,500** Contact **CM**



**REF: 71120478**  
2012 Krone Big Pack Baler, tandem axle, 80 x 90, 62,000 bales.  
**£26,500** Contact **AT**



**REF: 71120854**  
2004 New Holland BR740, average condition.  
**£4,500** Contact **AT**

## MORE HIGH QUALITY USED EQUIPMENT

McConnel Hedgecutter c/w motion controls, debris blower, 1.2 head, good condition	<b>£12,000</b>	<b>ML</b>	<b>REF: 71120156</b>
Major MU8400 Roller Mower	<b>£2,500</b>	<b>RL</b>	<b>REF: 61117066</b>
2013 Kuhn FC313 Front Mower Conditioner, VGC	<b>£6,750</b>	<b>SC</b>	<b>REF: 51120337</b>
2008 Kuhn FC313 Mower Conditioner	<b>£3,750</b>	<b>RL</b>	<b>REF: 61120112</b>
Kongsilde Vibro-Flex	<b>£5,300</b>	<b>CM</b>	<b>REF: H1117763</b>
Proforge 3m Disrupta Max Cultivator	<b>£6,750</b>	<b>CM</b>	<b>REF: H1118037</b>
2016 Lely Front Mower, working width 3.2m, impeller conditioner, trailed suspension	<b>£5,500</b>	<b>ML</b>	<b>REF: 71120330</b>
2012 McHale Round Bale Wrapper, good condition, approx 6,000 bales	<b>£8,750</b>	<b>PC</b>	<b>REF: 61120055</b>
2004 Kuhn BNG450 Flail Shredder, trailer	<b>£1,000</b>	<b>PC</b>	<b>REF: 61118824</b>
2008 Kuhn FC313 Mower Conditioner, VGC	<b>£3,750</b>	<b>RL</b>	<b>REF: 61120112</b>
2013 Kuhn Front Mower Condition, all oils checked, new PTO drive shaft, VGC	<b>£6,990</b>	<b>SC</b>	<b>REF: 51120337</b>

**Call your T H WHITE salesman for all the details of each machine:**

<b>PC</b>	<b>Paul Churches</b>	<b>07702 724308</b>
<b>SC</b>	<b>Stuart Crook</b>	<b>07831 249489</b>
<b>AD</b>	<b>Andy Daffurn</b>	<b>07860 331023</b>
<b>CD</b>	<b>Colin Davies</b>	<b>07860 401211</b>
<b>MH</b>	<b>Matt Hooper</b>	<b>07824 607087</b>
<b>RL</b>	<b>Ryan Lanfear</b>	<b>07769 248602</b>
<b>ML</b>	<b>Marley Lawrence</b>	<b>07483 037710</b>
<b>CM</b>	<b>Chris Martin</b>	<b>07919 044389</b>
<b>MP</b>	<b>Martin Payne</b>	<b>07818 077591</b>
<b>AT</b>	<b>Andy Taylor</b>	<b>07831 255811</b>

**T H WHITE**  
**AGRICULTURE**

**01373 465941 (Mon-Fri 08.00-17.00)**

**www.thwhiteused.co.uk**

All items offered are subject to remaining unsold. Prices shown do not include VAT. Some images are library photographs and spec may differ slightly. Accessories may not be included.