



Bespoke tractor for mixed & dairy farms



Petrol Pioneer delivers reliability



Standard no-cost 3 year warranty on New Holland combine harvesters



Christmas delights at the Country Store

AGRICULTURE PROJECTS

GROUND CARE DAIRY

LORRY CRANES

COUNTRY STORE

CONSTRUCTION

ENERGY, FIRE & SECURITY

MACHINERY IMPORTS

PROJECTS



Above: Conveyors over the top of the silos in Crisp Maltings' new plant. **Below:** The process area.

SPECIALITY MALT & PACKING PLANT FOR CRAFT BREWING INDUSTRY

As part of an ongoing expansion and upgrading programme of various UK sites within the Crisp Malting Group, T H WHITE Projects has been heavily involved in the construction of a new speciality malt processing, storage and packing plant at the client's head office and maltings in Great Ryburgh, Norfolk.

The speciality malt plant is the first in the UK to be built on a commercial scale. It includes a fully automated milling, cleaning and packing line focused on the growing craft brewing industry sector. Since its commissioning in 2018 the technology-led system solution has now been operating successfully for 12-months, achieving its production expectations.



An excellent business relationship between Crisp Maltings and T H WHITE Projects resulting from many successful projects together enabled a joint approach to the design and development of the overall scheme within some stringent site location planning conditions. The result has been the construction of

two dedicated, purpose-built structures to house the malt processing and packaging equipment, plus a large silo block of 24 x 30t finished product malt storage bins, 6 x analysis bins, 4 x malt buffer bins and 2 x 30t bulk vehicle out-loading silos.

The bulk materials handling system enables the malted barley to be conveyed gently and

Continued on page 2 >>

Wishing all our customers a Merry Christmas and a Happy New Year!



News and information from the T H WHITE Group

T H WHITE GROUP

GROUP

WHITE'S WORLD

White's World is published monthly by T H WHITE. To contact our Divisions, call:

Agriculture	Knockdown	01454 238181
	Marlborough	01672 512328
	Frome	01373 465941
	Huntley	01452 830303
	Hereford	01432 352333
	Toddington	01242 620211
	Devizes	01380 722381
	Stockbridge	01264 811260

Projects	01380 723040
-----------------	---------------------

Groundcare	Knockdown	01454 238181
	Reading	0118 976 0088
	Redditch	01527 597770
	Stockbridge	01264 811260

Dairy	Frome	01373 465941
	Huntley	01452 830303

Lorry Cranes	01380 733513
---------------------	---------------------

Country Store	Marlborough	01672 518408
	Knockdown	01454 238181

Construction	01672 512328
---------------------	---------------------

Energy, Fire & Security	01380 726656
------------------------------------	---------------------

Machinery Imports	01264 811260
--------------------------	---------------------

www.thwhite.co.uk

© T H WHITE Group 2019 E&OE
Nursted Road Devizes Wilts SN10 3EA

01380 722381

To unsubscribe from T H WHITE Group marketing, please visit www.thwhite.co.uk/unsubscribe

WHITE'S WORLD ONLINE

WHITE'S WORLD is also available as a digital edition where we include stories that may be received too late for print. To sign up for digital updates visit www.thwhite.co.uk/sign-up. We will then send you a monthly email with links to all the top stories and offers. You will have the option to unsubscribe at any time.

PROJECTS

SPECIALITY MALT & PACKING PLANT Continued from front page



The plant's steelwork towers and gantries were fabricated by T H WHITE Projects.

transferred at 40tph from the existing malt production facility by means of a series of elevated belt conveyors on specially designed bridge gantries and connecting structural towers across the site and into the new block of 24 x finished product storage bins. These can also be fed directly from a new 60tph rated bulk intake arrangement.

From beneath the bins further conveying equipment transfers the malted barley at a rate of 25tph into the new packing hall where the finished material is automatically cleaned, weighed and packed into its designated containers and bags ready for palletising, shrink wrapping and warehouse storage in readiness for the market. There is also the option to utilise a 10tph malt mill within the numerous speciality malts available.

The new packing hall has been provided with a specially designed mezzanine floor to accommodate the new processing equipment which gives safe and comfortable access for operational staff.

The filling and packing of bags is handled on the fully automated line which can crush, clean, weigh and bag 20 tonnes of malt per hour into 25kg bags – a speed

approximately three times faster than the conventional manual filling and stitching method commonly used.

Key factors in the design of the whole system solution have been cleanliness, maintaining minimal material degradation and cross-contamination during the process, as well as ensuring safe access for site maintenance personnel to the various items of plant and machinery, the whole scheme being fully compliant with ATEX requirements.

In production, the high-tech speciality malt processing & packing plant is operated and monitored via a fully automated, integrated PLC control system, ensuring that the process solution generated by T H WHITE Projects in close conjunction with the client fulfils its operational expectations and market demands.

T H WHITE Projects specialises in cereal processing & storage solutions of all sizes, from small farm installations to large commercial/industrial bulk facilities, taking each project from conception to completion. If you have a scheme you would like to talk about, please do contact us on **01380 723040** or email projects@thwhite.co.uk

AGRICULTURE

BESPOKE TRACTOR FOR MIXED & DAIRY FARMS

A star at Agritechnica 2019 was the New Holland T5 Dynamic Command tractor range which has been configured to deliver maximum productivity in mixed and dairy farms.

The new tractors are ideal where loader work and transport are key aspects of daily operations, as well as high-PTO work, such as mowing, baling, light tillage and ground preparation.

Building on the reputation of the T5 series for versatility, the four new T5 DC



models are rated from 100 to 130hp and feature Dynamic Command eight-step semi-powershift transmission. This offers a wide spread of speeds within the three ranges, which correspond to those most frequently used when conducting in-field or on-road activities. The operator can thus match the speed of the tractor to the job with precision, without changing the range. There are dedicated clutches for forward and reverse to ensure a controlled power shuttle, even on steep gradients, while the range shifting is all automated.

The T5 DC's compact dimensions – just 2,695mm tall, with a 2,490mm wheelbase and a tight turning angle of 55° – greatly simplify yard and dairy farm work, while the ultra-quiet Horizon™ cab offers the best operator environment in its class with the superior

**COUNTRY STORE
NEW LOOK
COUNTRY STORE**



The windows of our Country Store in Marlborough have been treated to a make-over with images that reveal some of the ranges within.

Christmas gifts, trees and decorations are now in store so be sure to visit us in London Road, Marlborough, in the coming weeks!



ergonomics and the intuitive features of the SideWinder™ armrest. The new super high visibility panel, together with a single-piece front screen and ample glazed areas deliver seamless visibility all round – perfect for loader work.

The power output of the proven NEF four-cylinder, 4.5 litre engine is calibrated to minimise fuel consumption while also

meeting Stage V emissions standards.

For many farmers, the New Holland T5 Dynamic Control will provide the perfect solution for a wide range of applications. Our New Holland experts will be pleased to give you the full picture – contact any of our branches or enquire online at www.thwhiteagriculture.co.uk/get-in-touch/

PLANT UPGRADES AND REPLACEMENT

**MATERIALS PROCESSING, DRYING, BULK STORAGE
AFTERMARKET CUSTOMER SERVICE AND SUPPORT**

Contact us now on 01380 723040 and ask for Kevin Alwick or send a mail to cssprojects@thwhite.co.uk

If you are thinking about modernising your site operations either on intake, storage, drying or new buildings, our skilled professionals are ready to assist.

- Free Advice
- Mechanical & Electrical
- Design & Construct
- Consultancy
- Repairs & Service
- Installation/Fabrications
- Refurbishments
- New Machinery
- Health & Safety

GRAIN STORE EMERGENCY OUT OF HOURS HOTLINE: 07919 394602

**T H WHITE
PROJECTS**



**CALL US NOW AND
BE PREPARED**

**MAKE THIS A
CHRISTMAS TO
REMEMBER!**

LIGHTS • DECORATIONS
WREATHS • GIFTS • CLOTHING
SHOES • EQUESTRIAN
SEASONAL DELIGHTS

Everything you need to make
Christmas special – all under one roof.

London Road
Marlborough SN8 2RN
01672 518408

OPENING TIMES
Mon-Sat: 8am - 5.30pm
Sundays & Bank Holidays: 10am - 4pm

**T H WHITE
COUNTRY STORE**

MACHINERY IMPORTS

SPIDER'S ENHANCED PRESENCE ON THE WEB!

A new, user-friendly Spider mower website is now live, making it easy to find out all about the world's most capable slope mowers.



nearest Spider dealer, the 'Find a Dealer' page provides addresses and telephone details for each of the UK dealers, a list which will continue to grow with new dealers sought to increase support and sales coverage for customers in new areas.

It's also now easier than ever to book a free, on-site demonstration via an online form available on every page which sends your request straight through to the team for a quick response.

Alternatively, for those who prefer to talk on the phone, you can call and speak to a Spider representative right here in the UK with contact numbers available for the team.

For those seeking to contact their

Spider remote-controlled slope mowers are capable of climbing slopes up to 55° and feature a revolutionary design incorporating 4-wheel drive, skid steer, and zero-turn functionality. Latest addition to the range is the compact Spider X-Liner, which despite its small size can mow up to 3000m² per hour!

Take a look at the new website at www.spidermower.co.uk

DECEMBER OFFERS

BEAT THE WINTER CHILL WITH NEW HOLLAND

JACKET New Holland logo, Micro fleece inner layer, Showerproof, windproof and breathable, Full length contrasting light blue zip with inner storm flap and chin guard, Two front zip pockets. Elasticated bound cuffs.

£24



GILET New Holland embroidery, fleece lined twin Pockets, full zip Heavyweight Polartherm™ fleece with antipill finish.

£16



FROM T H WHITE AGRICULTURAL PARTS STORES
PRICES SHOWN EX-VAT For current offers see:
www.thwhiteagriculture.co.uk

ENERGY, FIRE & SECURITY



CHARGED SYMBOL

As you sit in a queue of traffic and find yourself behind one of T H WHITE's Energy, Fire & Security vans, you may notice a new symbol – a green fuel pump.

It's just a reminder of the latest technology we offer to customers as an Electric Vehicle Charge Point Installer. If you are interested in EV charging – at home or at work – find out how we can offer you a great deal by calling our specialists on 01380 726656.



AGRICULTURE

SKITTLES FINAL 2019



The final of the T H WHITE customer mixed skittles tournament was held at the Old Royal Ship, Luckington on Monday 7 October 2019.

The finalists were the Deverill Boyz 'n' Girlz from Horningham, captained by Eric Down and the Cavaliers from Great Somerford, captained by Richard Greenhill.

In the match, the Deverill Boyz 'n' Girlz took victory, winning by 8 points to 4 and by 2 pins. The team has dedicated the game to Graham Few who sadly passed away earlier this year.

Petronas sponsored the event this year and Adrian Lovegrove presented the prizes. The male players were presented with engraved glass tankards and the ladies were presented with engraved wine goblets.

This year the highest individual score was won by Andrew Day who plays for Deverill Boyz 'n' Girls with a top score of 46 pins.

I would like to thank James Minty for keeping the score and to Helen and her team of Staff at the Old Royal Ship, for a good night, which was enjoyed by everyone.

Sharon Minty Skittles Organizer

AGRICULTURE



WORLD'S FIRST PRODUCTION METHANE POWERED TRACTOR

Back in 2016 T H WHITE partnered New Holland in trials of the second generation T6.180 methane powered tractor (see White's World 265). The experience gained in those trials, plus further development has led to the launch of the world's first production T6 Methane Power Tractor which made its debut at Agritechnica 2019.

This completely sustainable tractor solution offers the same performance as diesel with 30% lower running costs and – crucially – produces 99% less particulate matter than an equivalent diesel, and reduces CO₂ emissions by a minimum of 10%, and overall emissions by 80%.

The T6 Methane Power tractor will be of special interest to biogas plant operators and farmers who grow energy crops and use agricultural waste to generate biomethane, achieving near-zero CO₂ emissions. Livestock and dairy farmers can take this even further by producing biomethane from manure, which subtracts CO₂ from the environment resulting in a carbon-negative footprint.

On the T6 Methane Power, the gas tanks are mounted in the same position as the diesel tanks on the standard T6 model. Clever design means that cab access and visibility are unimpeded. For users who need to extend their working hours, a 'Range Extender' is available as an option which can be mounted on the front linkage or weight carrier, or on the

rear linkage for loader work.

The capabilities of the methane-powered T6 are similar to the standard T6, retaining production tyre sizes and track width settings. Additional options such as mid-mount valves are also still available.

The T6 Methane Power will be available to customers during 2020. To keep abreast of the introduction and to hear more about ways in which it could save money specific to your operation, contact the New Holland specialists at our Agricultural branches listed on page 2.

AGRICULTURE

STANDARD THREE YEAR, NO COST WARRANTY



New Holland is so confident of the superior quality and longevity of its products that it has launched a standard three-year, zero-cost extended warranty package for its CR and CX 7/8 flagship combine harvester ranges.

The warranty applies to all new CR and CX 7/8 combines sold in the UK

and covers engine, driveline and after-treatment system for three years or 1,200 engine hours (whichever comes first). New Holland is the first brand in Europe to offer as standard such an in-house comprehensive warranty package, testament to its commitment to meeting customers' demand for a clear 'total cost of ownership' of their equipment.

MACHINERY IMPORTS

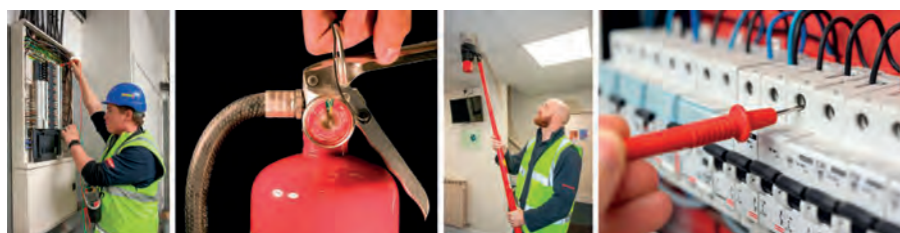


IMPRESSIVE RANGE AND NEW MACHINES AT SALTEX

Ferris, Wright, Spider and Jensen have celebrated another successful year at SALTEX – the leading grounds maintenance show held at the NEC.

11 machines including three new models were shown on a 80m² stand. As well as showcasing the recently launched ISX™800 – the newest ride-on zero turn mower from Ferris, the team was proud to launch the all new FW15, a brand new 32" mulching pedestrian mower. The FW15 is now the smallest mower in the Ferris line-up, capable of maintaining tight spaces while retaining all the recognised Ferris benefits such as hydrostatic drive, reinforced steel deck and single hand operation.

Visitors to the stand were also interested to see the 10.5" 'tweel-style' front wheels of the FW15, which are fitted to swivel mountings which can be latched into fixed position, providing flexibility for mowing on level and sloping ground.



PROTECT YOUR PEOPLE AND PREMISES SAVE 10%* ON YOUR CURRENT FIRE AND SECURITY COSTS BY SWITCHING TO T H WHITE.

We know that even with the best intentions it's not always easy to keep on top of maintenance, so T H WHITE has a great offer to address ALL your fire and security service needs, saving you money at the same time. **For a limited period we are offering 10% OFF* existing annual fees from any other supplier for fire & security servicing contracts, including extinguishers.**

OR ADD A NEW TECHNOLOGY TO YOUR EXISTING SERVICE CONTRACT WITH US AND RECEIVE 10% OFF ANY EXTENSION.

If you already have a service contract with us and you add a new technology, we'll reduce the cost of that extension by 10%. So, if we currently service your alarm system, you could add fire equipment, or vice versa. Or, perhaps, add CCTV or door access...

To find out how to claim your 10% discount call 01380 726656, email efs.thwhite.co.uk quoting 'Discount 10' or complete the online form at efs.thwhite.co.uk/contact

*Terms & conditions: To qualify customers will need to provide evidence of annual contract charges or 12 months of invoices from their current supplier. The discount offer is also open to existing T H WHITE customers taking on a new technology with us. For example, if we currently service your fire alarm and you wish to add CCTV or Door Access. We reserve the right to decline a service contract subject to survey.

T H WHITE
ENERGY, FIRE & SECURITY

01380 726656
efs.thwhite.co.uk

AGRICULTURE



ANOTHER HONDA IN THE FAMILY

Third generation dairy farmer Austin Russell is pictured here, with two of the things he appreciates most – his Pedigree Holsteins and his Honda Pioneer!

Austin runs an 870 acre mixed farm where he milks 200 Holsteins, in the Cotswold village of Barnsley. Having owned Honda ATVs over the years, another Honda was the natural choice when he was looking to buy a UTV.

AGRICULTURE

SEEDING PRECISION – THE EASY 0% WAY!



Until 31 December we can offer you most products in the Kuhn farm machinery range at 0% FINANCE with years to pay.

Kuhn makes some of the best ploughing, tillage, seeding, fertilising and feeding equipment on the market – plus much else besides – and until New Year's Eve you can purchase almost any of it with a 0% finance deal, spreading the cost with either 2+22 monthly payments, or 1+2 annual payments.

This could be one of the best investments you make this year, so for all the details, terms and conditions just contact your Agricultural rep or one of our branches.

Following a demonstration from Tim Rochfort at our Toddington branch, Austin decided on the Pioneer petrol 700 with two and four wheel drive and automatic transmission and driven by a torque converter.

Austin usually begins his winter working day at 4am, heading off to the dairy for milking in the Pioneer and then he'll use it to tow the feed trailer, check and move stock, transport staff around, carry feed and so on. The Honda Pioneer works hard in the summer too, towing the fuel bowser out to the combine and, more recently, ferrying supplies to the farm's new 'glamping' site.

Austin has been impressed by the reliability of the new Pioneer. "It's also safe for two people, stable, economical – and it pulls like a train when required! Even in the unrelentingly wet weather recently, the Pioneer finds grip, but it doesn't get bogged down or mark the ground too much," he says.

The fact that the Pioneer 700 is a petrol model is seen by Austin as another plus. It's quiet around livestock and is as economical as a similarly powered ATV. Its lightness adds to its agility and means it can go almost anywhere around the farm without churning up the ground and causing a mess in the winter.

Uniquely, Honda uses a torque converter transmission (no belts) which gives fantastic engine braking downhill, something that Austin likes, especially when towing.

If you think the Honda Pioneer 700 could be the UTV for you, check out Honda's 333 offer – 3 Years 0%, 3 years Tracking subscription and 3 Years warranty.

For more information call Tim Rochfort on 07973 911934 or email tim.rochfort@thwhite.co.uk to arrange a demo.



Jensen A530 turntable woodchipper

Also launched at the show was the new Jensen A530 turntable woodchipper. Believed to be the only current 6" petrol woodchipper with turntable functionality, the A530 promises improved safety and efficiency, with operators loading the chipper from the verge, avoiding the need to work on highways, lift heavy timber further around the machine or risk danger to the public.

The versatile new A530 turntable is an adaptation of the hugely popular A530L machine, with 35hp petrol engine, galvanised steel chassis, hydraulic infeed rollers and electronic safety sensors.

From Spider, visitors were able to see the final version of the X-Liner model. With a commercial Honda engine, patented 4wd and 4-wheel steer drive, integrated winch and climbing ability of up to 55°, the compact X-Liner offers productivity, safety, high cut quality and so much more.

Also on show were the popular Sport I and Stander Small Frame stand-on mowers from Wright.

Find out more about the brands and get in touch regarding dealership opportunities in your area at www.thwhite.co.uk/machinery-imports

T H WHITE
AGRICULTURE
AGRICULTURAL EQUIPMENT
WINTER SERVICE 2019-20
DON'T MISS OUR SILVER 15% OR BRONZE 10% DISCOUNTS

SILVER
For orders placed before 30 December 2019, invoiced before 31 March 2020
15% OFF
Labour and In-Stock Parts

BRONZE
For orders placed before 14 February 2020, invoiced before 30 April 2020
10% OFF
Labour and In-Stock Parts

We will service ANY make, ANY model, ANY age

Request your service slot online NOW at: www.thwhiteagriculture.co.uk/get-in-touch
To qualify, bookings must be placed by the dates shown and must include parts and service work.
Extended payment terms available subject to credit approval. T H WHITE Terms & Conditions apply to all Winter Service packages.

T H WHITE
GROUND CARE
SAVE 10% ON WINTER SERVICING

Book a winter service for your groundcare machinery before 31 March 2020 to receive a 10% discount on labour and in-stock parts.

Our Groundcare service teams can service any make, any model and any machine. With specialist training and a wealth of industry experience, our teams work from fully-equipped workshops with state-of-the-art equipment to ensure your machinery is in top condition ready for the new season.

Not only do we offer fixed price servicing, we also provide up to 12 months warranty on parts and labour and carry out FREE software diagnostic checks. Our great end-of-season service deals include:

- Kawasaki Mule DX/DXT from £385**
 - Iseki SXG323 ride-on mower from £385**
 - Amazone Profihopper from £550**
- We will also carry out in-situ cutting cylinder regrinding **from just £85**

View all the details and request your discounted service online NOW at thwhitegroundcare.co.uk/servicing, or just call any of our Groundcare branches listed on Page 2.

TH WHITE AGRICULTURE

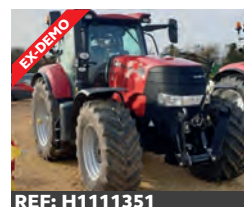
EX-DEMO • EX-HIRE • EX-DISPLAY



REF: H1111046
Case IH 8240 Combine autoguidance, hi-cap unload auger, engine compressor, luxury cab, magnacut **£POA**



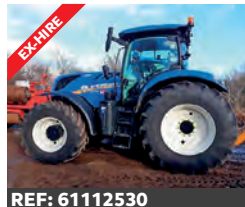
REF: 41112274
Case IH Puma 200, T4B, 50kph, Michelin tyres 650/70R42 **£105,350**



REF: H1111351
Case IH Puma 200 T4B, 50kph, exhaust brake, air trailer brakes, adv hmc, 156l pump, 4 rear valves **£92,750**



REF: 61115681
New Holland CR8.90 Combine, 30ft varifeed header, engine hrs 193, threshing hrs 116 **£POA**



REF: 61112530
New Holland T7.245 AC T4B, 50 kph, eco cvt, fender PTO control, full autoguidance **£97,000**



REF: 51114907
New Holland T7.230 SW MY18 (SWII), T4B 50 kph, Power Command, Michelin tyres **£95,500**



REF: 61116722
New Holland T6.145 Dynamic Command, T4B, 40 kph, Michelin tyres **£53,950**



REF: 51116449
New Holland T5.105 Utility, T4A, 40 kph, tyres: front 13.6R24, rear **£37,850**



REF: 61105502
Väderstad Carrier 525XL, Disc Cultivator, 5.25m working width **£38,150**



REF: 61110508
Väderstad Top Down 400, **£52,000**



REF: 11115797
Väderstad Rapid RDA600S Combi Drill, 3 rows of coulters, depth control **£82,000**

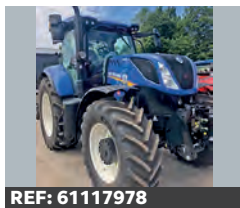


REF: H1110778
Pöttinger Lion 6000 Power Harrow, 6m folding width for tractors up to 270hp **£25,000**



REF: 11116388
New Holland Disc Cutter 320P Mower Condition **£10,950**

HIGH QUALITY USED AGRICULTURAL EQUIPMENT



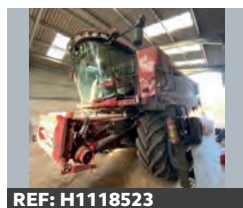
REF: 61117978
2018 New Holland T7.260AC, T4B engine, MY18, 50kph, comfort pack, front linkage **£98,500 RL**



REF: J1118097
2012 New Holland T7.250, 50kph, Powershift, sidewinder, front linkage **£43,000 WF**



REF: 71117818
2014 New Holland T6.155 SWB, excellent condition **£36,200 AT**



REF: H1118523
2017 Case IH Axial Flow 7240, 25' varifeed header, 1 rape knife, full AFS, 2 seasons warranty **£183,500 CM**



REF: 41116117
2015 Case IH Puma 200 ECO CVX, 50k CVT, front axle & cab susp, air brakes, front linkage **£58,000 SC**



REF: 11112865
2015 Manitou MLT 735 120 powershift LSU, fully dealer serviced, very nice condition **£39,000 CD**



REF: J1116832
2016, Manitou MLT 629, 5 hyd spools, 48" fixed forks, pneumatic seat with susp, air con **£36,000 WF**



Scan these QR codes for quick access to our used machinery app



IOS Android

COMBINE HARVESTER

2018 New Holland CR9.90, 28.5 flex tracks, GPS ready, twin screen, 35' varifeed with twin rape knives, opti speed, 1 year service plus remaining **£268,000 RL**

TRACTORS

2016 New Holland T7.200 SWB, intel iView 4, Powershift, 50kph with air, front linkage & PTO, 3 slice mid-mount valve block **£41,000 PC**
2007 New Holland TL90A, Q36 loader, 5583hrs, mint condition **£25,000 AD**

RB Ray Bennett 07710 985957
PC Paul Churches 07702 724308
SCT Steve Clucas-Tomlinson 07860 593339
DC Dave Comer 07483 037515
SC Stuart Crook 07831 249489
AD Andy Daffurn 07860 331023
CD Colin Davies 07860 401211

John Deere 6320, MX Loader **£31,500 AT**

MACHINERY

EX-DEMO Kuhn Profile 24.2CL TMR Mixer Wagon, cross feeding, 2 vertical augers, anti overflow ring 5 point, programmable weighing system, 6 auger knives, k-nox augers **£39,950 DC**
2019 EX-DEMO Kuhn FC9530 folding Triple Mower Conditioner, PTO, lights & signal **£POA DC**
2015 Manitou MLT7.35 PowerShift Elite, headstock, hydraulic locking pins, CRC, air con **£42,500 CM**

NE Nigel Ellis 07860 247367
WF William Farr 07495 114325
BG Bob Gallop 07831 883734
JH Jamie Harroway 07826 917955
RL Ryan Lanfear 07769 248602
ML Marley Lawrence 07483 037710
BL Ben Linton 07495 114479

2014 Manitou MLT629 Elite, Manitou headstock, good condition **£32,000 JH**
2012 Manitou MLT634-120, boom suspension, 460/70R tyres 80% **£29,000 BL**
2015 New Holland RB150 Roll Belt Baler, great condition, 3500 bales **£24,500 AT**
2016 Kverneland Exacta **£9,000 WF**

MULE

2016 Kawasaki Mule Pro DX, 4wd, diesel, manual tipping back, tow bar, VGC **£7,750 TR**

CM Chris Martin 07919 044389
CO Charlotte Osborne 07483 037516
MQ Mike Quilter 07887 450200
TR Tim Rochfort 07973 911934
AT Andy Taylor 07831 255811
JW Joe Woolley 07818 077591

All items offered are subject to remaining unsold. Prices shown do not include VAT.

Sales Hotline: **01373 465941** (Mon-Fri 08.00-17.00) Out of hours: **07710 985957**

New: www.thwhiteagriculture.co.uk Used: www.thwhiteused.co.uk