



**New Jensen turntable woodchipper**



**Take advantage of an extra year to pay for a New Holland T7 LWB**



**Ferris FW15 compact walk-behind mower**

**PLUS: WIN a deluxe Christmas hamper!**

- AGRICULTURE
- PROJECTS
- GROUND CARE
- DAIRY
- LORRY CRANES
- COUNTRY STORE
- CONSTRUCTION
- ENERGY, FIRE & SECURITY
- MACHINERY IMPORTS

## AGRICULTURE



## SHOW-STOPPING MAGNUM AFS CONNECT

**T H WHITE's brands will enjoy a strong showing at the biennial Agritechnica show, being held in Hanover from 10 to 16 November.**

Several of our manufacturers won Agritechnica awards this year and this issue brings you the planned Agritechnica messages as the latest machines and technologies are unveiled at the show, all set to transform your farming in the years ahead...

Among the most impressive exhibits is the seventh generation of Case IH's flagship conventional tractor, the Magnum AFS Connect available in variants from 351hp to 435hp. A new design with a full-length door and a superbly-appointed comfort cab is twinned with remarkable connectivity. Based on the proven Case IH Advanced Farming Systems (AFS) technology, the



**We showcase some of the most interesting innovations being shown at Agritechnica 2019, starting with the latest superb Case IH Magnum range...**

tractor incorporates a refined data system which takes the concept to new levels. With entirely new hardware and software – including a new display – the system offers real-time presentations not only of 'standard' data such as the location and performance of machines, but also data including field records, area worked and rates of application.

Using the online Case IH AFS Connect portal, farm managers can access the data from their office or mobile device, monitoring current field operations, fleet information, agronomic data and more. Although we can't cover all the options in this brief overview, the **T H WHITE Pro Agri** team will be delighted to give you all the details. Call them on 01373 465941 (Frome) or 01264 811260 (Stockbridge).

**Continued on page 2 >>**



**News and information from the T H WHITE Group**

**T H WHITE GROUP**

**GROUP**

**WHITE'S WORLD**

White's World is published monthly by T H WHITE. To contact our Divisions, call:

<b>Agriculture</b>	<b>Knockdown</b>	<b>01454 238181</b>
	<b>Marlborough</b>	<b>01672 512328</b>
	<b>Frome</b>	<b>01373 465941</b>
	<b>Huntley</b>	<b>01452 830303</b>
	<b>Hereford</b>	<b>01432 352333</b>
	<b>Toddington</b>	<b>01242 620211</b>
	<b>Devizes</b>	<b>01380 722381</b>
	<b>Stockbridge</b>	<b>01264 811260</b>

<b>Projects</b>	<b>01380 723040</b>
-----------------	---------------------

<b>Groundcare</b>	<b>Knockdown</b>	<b>01454 238181</b>
	<b>Reading</b>	<b>0118 976 0088</b>
	<b>Redditch</b>	<b>01527 597770</b>
	<b>Stockbridge</b>	<b>01264 811260</b>

<b>Dairy</b>	<b>Frome</b>	<b>01373 465941</b>
	<b>Huntley</b>	<b>01452 830303</b>

<b>Lorry Cranes</b>	<b>01380 733513</b>
---------------------	---------------------

<b>Country Store</b>	<b>Marlborough</b>	<b>01672 518408</b>
	<b>Knockdown</b>	<b>01454 238181</b>

<b>Construction</b>	<b>01672 512328</b>
---------------------	---------------------

<b>Energy, Fire &amp; Security</b>	<b>01380 726656</b>
------------------------------------	---------------------

<b>Machinery Imports</b>	<b>01264 811260</b>
--------------------------	---------------------

[www.thwhite.co.uk](http://www.thwhite.co.uk)

© T H WHITE Group 2019 E&OE  
Nursted Road Devizes Wilts SN10 3EA  
**01380 722381**

To unsubscribe from T H WHITE Group marketing, please visit [www.thwhite.co.uk/unsubscribe](http://www.thwhite.co.uk/unsubscribe)

**WHITE'S WORLD ONLINE**

WHITE'S WORLD is also available as a digital edition where we include stories that may be received too late for print. To sign up for digital updates visit <http://www.thwhite.co.uk/sign-up>. We will then send you a monthly email with links to all the top stories and offers. You will have the option to unsubscribe at any time.

**T H WHITE AGRICULTURE**  
**AGRICULTURAL EQUIPMENT**  
**WINTER SERVICE 2019-20**

**LAST CHANCE**  
**20% OFF**  
LABOUR AND IN-STOCK PARTS  
For orders placed before 29 November 2019,  
invoiced before 28 February 2020

**We will service ANY make, ANY model, ANY age**

Request your service slot online NOW at: [www.thwhiteagriculture.co.uk/get-in-touch](http://www.thwhiteagriculture.co.uk/get-in-touch)  
To qualify, bookings must be placed by the date shown and must include parts and service work. Extended payment terms available subject to credit approval. T H WHITE Terms & Conditions apply to all Winter Service packages.

**AGRICULTURE**



Continued from front page

**Väderstad**

Innovative new equipment solutions and technological advances star in Väderstad's Agritechnica line-up.



Väderstad NZ Extreme 1425

The show will give visitors the first opportunity to see the **all-new heavy-duty tine harrow NZ Extreme 1250-1425**. This 12.5 to 14.25 metre machine is Väderstad's widest harrow to date for the European market and will be placed in a variety of challenging locations for 'real-world' testing before full manufacture and delivery begins in 2021. Väderstad has really gone the extra mile with the NZ Extreme which is built from a 5-section frame, able to adapt to the field surface and maintain the selected depth. This capability is augmented by an innovative weight transfer system and ingenious wheel set-up. Swedish quality steel, a strong and unique tine mounting plus an intense vibrating tine action is combined with extreme stiffness and durability for real heavy duty work. The Extreme tine will crush clods, maintain its exact depth and completely level the field.

Also being launched at Agritechnica 2019 with an Innovation Award is the Väderstad **Tempo WideLining** system. This is the world's first tramlining system that will enable farmers to spread liquid manure in a standing silage maize crop, without compromising yield potential. Instead of shutting off row units to create tramlines, WideLining



The Väderstad Tempo WideLining system is designed for working in a standing silage maize crop and will automatically adjust the row units to create tramlines based on the working width of the liquid manure spreader

automatically changes the row spacing on the planter hydraulically to create two 1,050mm tyre tracks, thereby ensuring all row units plant at full capacity. The row spacing between the tyre tracks can be varied 750-600mm.

WideLining is fully automatic and integrated in the iPad-based control system Väderstad E-Control. When the function is activated, the machine will calculate the field and automatically adjust the row units to create tramlines based on the working width of the liquid manure spreader. In practise, this is likely to result in 8.3% more seeds in the field compared to alternative technology.

Väderstad WideLining will be available on Tempo V 6-12 from the second half of 2020.

Väderstad has offered wireless machine control, via its iPad-based control system Väderstad E-Control since 2013, but now the technology has been extended to phones. By downloading the **E-Control Mobile** app to a smartphone, the farmer can now calibrate his seed drill or planter direct from the phone, connecting wirelessly to the Väderstad machine and thereby maintaining full control flexibility and mobility in the field.

**New Holland**

New Holland's continual push towards enhanced farming technology has earned it three Agritechnica Innovation Awards this year. There's a new driveline for the high intensity BigBaler which delivers a 79% increase in torque; further developments to the CX threshing system; and a baler control system for the T7 tractor.



A major launch is the **T8 GENESIS® Series tractor with Precision Land Management (PLM™) Intelligence.**

Packed with new features and technology, it features a completely redesigned cab and delivers a fully customisable 'jump on and drive' operator experience. Hydraulic remote valves can be assigned to the paddles or joystick of the driver's choice and individual tractor settings can be stored against an implement name and recalled instantly when switching between tasks.

During 2020, New Holland will extend the T8 GENESIS® range with a new 400hp full-powershift model. This new powershift will feature a 21Fx5R speed transmission and will only be available on the flagship T8.435 Ultra Command™ in either wheeled or SmartTrax™ versions. With this new addition, customers can choose at every power level the transmission technology most suitable for their business.



New Holland's **CR Revelation combine** range has been given a 5% power upgrade across most of the range and now introduces the industry-leading ECOBlue™ HI-eSCR 2 technology to comply with Stage V emissions standards.

Of great interest to many farmers will be the introduction of the new patented **Loop Master™ knotter** on all BigBaler models. This sets new standards by eliminating offcuts left loose on the bale and in the field. It's estimated that a season's production of 10,000 bales can result in close to 6 kilometers' worth of twine offcuts which can contaminate feed and be ingested, or which are left to pollute the ground. As well as doing away with loose twine offcuts, the Loop Master™ enables the twine to retain 15% more strength - equating to more efficient and secure baling, higher productivity and lower costs.

**Kuhn**



Kuhn's **MDS .2 fertilizer spreaders** offer many features and options suitable for specialised crops, such as vineyards, orchards and vegetables, as well as row crop and small grain farms. A simple PTO drive and rugged low-maintenance



LoopMaster™ knotters are being introduced on all New Holland BigBaler models

gearbox operates twin spreading discs that offer working widths up to 80ft.

The company's new **Maxima 3** seed drill has its own 48v electric drive system which means there's no need to use the electric power of the tractor, while also ensuring smooth and continuous rotation for high precision, even on acceleration and deceleration on headlands, in vertical accelerations or in dusty environments.



**Manitou**



Among Manitou's popular range of telehandlers and forklifts, the company is showing its new **MC18-2/4 forklifts**. With an overall width of just 1,450mm the new machines are designed for easy manoeuvring in restricted spaces. Extra power and torque comes from the four motors integrated in the wheels giving it the ability to climb slopes with ease. It's possible to switch from four-wheel to two-wheel drive at the touch of a button and 30cm ground clearance (the highest on the market) means it can be used in challenging conditions such as on mud and sand.

Visitors to Agritechnica will also have a preview of the comfort-orientated Manitou **MLT 741-140 V+** telehandler.

**Kverneland**



Kverneland's new **Enduro cultivator** promises to be the right choice for both, shallow stubble and deeper working depths. The Enduro carries out tillage of the soil, levelling and consolidating in one pass reducing costs and the risk of lost moisture to promote the weed regrowth.

Another great innovation is Kverneland's **Turbo i-Tiller**, a cultivator that has depth and level adjustments which are controlled directly from the tractor cab. This is also linked to On-The-Go Dynamic Traction Control for maximum economy.



**Not going to Agritechnica? NO PROBLEM! We can give you all the details of the new machines and technologies, as well as arranging demonstrations as they become available. Just contact your T H WHITE branch (listed on page 2).**

**AGRICULTURE**

**3-3-3 FOR PIONEER**

Honda's hugely popular Pioneer UTV can be yours on a very special 3-point purchase plan – if you order by 2 January 2020.

- With a minimum deposit of 20% the balance can be paid over **3 years @ 0%**
- Purchases will qualify for a **3 year Datatool GPS** tracking subscription
- Honda's excellent 2-year **warranty** will be extended to **3 years!**

Bag your Honda 3-3-3 deal by calling our UTV/ATV specialist Tim Rochfort on 07973 911934.



**MACHINERY IMPORTS**



**NEW FERRIS MOWER FOR COMPACT SPACES**

All-new for 2020 is the compact Ferris 32" FW15 variable hydrostatic walk-behind mower. The new machine answers the need from many professional landscaper who need to carry out precision mowing in confined spaces around trees and plant beds.

The FW15's narrow footprint makes the mower manoeuvrable and easy to operate. Powered by a Honda petrol engine with variable hydrostatic transmission, it delivers smooth and user-friendly operation and can even be operated comfortably with one hand. Adjustable speed control and handlebars with a 4-position set-up makes for complete operator comfort.

The compact 32" reinforced steel deck comes with dual-timed cutting blades and spring assisted height of cut adjustment lever for quick and simple height change.

Contact our Machinery Imports team on 01264 811260 for details or to arrange a demo when available.



**AGRICULTURE**



**READY FOR THE CHOP!**

Next year's hedge cutting season might seem a long way off, but by ordering any Kuhn hedge cutter before the end of December you can spread the cost over four years – and there's nothing to pay until 1 May 2020!

This unmissable 0+4 @ 0% offer is on now, so talk to any of our Agricultural branches for all the details, terms and conditions.

**LORRY CRANES**

**NEW PALFINGER UK TRAINING SPECIALIST**



Having decided to expand the ALLMI lorry loader training provision in the East of the England, Palfinger UK naturally sought out a recruit of the highest calibre to join the already exceptional team. Cue, Zoe Ellis.

Zoe is not your average 'teacher'. With a passion for heavy machinery and a wealth of experience in truck driving and training, Zoe is the perfect addition to the Palfinger UK team.

Zoe obtained her HGV Class 2 licence in 2007, and moving on to achieve her Class 1 licence in 2008. From there she embarked on a lorry driving career spanning 11 years. After many years practically living in her cab, Zoe opted for a change in lifestyle, whilst still wanting to stay in the industry she knew and loved. With a passion for training, and a friendly and enthusiastic personality to boot, Zoe decided to put herself through training to become an ALLMI instructor.

"I loved driving trucks but also wanted a more settled life away from weekly truck-stop stays and sleeping in cab. So I decided to take the plunge in 2014 and qualify as a trainer. Over the past 11 years I've been lucky enough to drive a really wide range of vehicles and use loader cranes from every manufacturer. In my experience Palfinger are the 'crème de la crème' of cranes, excellent quality, simple to use and designed with the operator in mind.

When I was offered the role of ALLMI trainer at Palfinger UK I was genuinely over the moon. It's not often that you hear of people being offered their dream job, but that is exactly what has happened to me."

Since joining the team at the end of September, Zoe has spent time getting to know the three existing instructors and the training co-ordinator at Palfinger UK, as well as meeting the wider teams in the sales, service and production departments.

Palfinger UK offers ALLMI accredited, HSE-recognised lorry loader safety courses across the UK, with training delivered either at our facilities in Falkirk, Bradford and Devizes, or on-site at your premises. Additionally, we can register attendees for seven hours of JAAPT Approved Driver CPC qualifying time. Visit [www.palfinger.co.uk/training](http://www.palfinger.co.uk/training) to learn more and contact us to discuss your training requirements further.

**AGRICULTURE**



**TAKE AN EXTRA YEAR ON US! 0% FINANCE OVER 4 YEARS ON A NEW HOLLAND T7 LWB**

For a limited period only we are offering very special finance terms on 'in stock' New Holland T7 long wheelbase (LWB) tractors.

We are proud to be able to offer you this tough, versatile tractor on terms of **1+3 @ 0%**. That means one payment down and three annual payments thereafter at zero percent interest\*. Or, to put it another way, a one year extension to our usual finance terms.

There's no doubt that this tough and versatile tractor also has head turning styling features, including new 'cat-eye' lights, gill-like side vents and a gull wing profile roof, jam-packed with up to 16 LED cab lights, including automotive-

style signature lights, for true round the clock farming.

The ECOBlue™ HI-eSCR Nef engines are fully compliant with the even more stringent Tier 4B emission standards and develop between 225-270hp (CV) whilst maintaining the outstanding fuel economy you've come to expect of the T7 range. The new semi-active, ventilated seat makes day-long farming even more comfortable.

This opportunity to take advantage of such favourable terms is sure to be popular, so don't miss out! Contact any T H WHITE Agricultural branch today.

\* Full terms and conditions on request. Subject to status. Maximum 50% of RRP or balance to finance.

**ACCREDITED SPECIALISTS IN ENERGY, FIRE & SECURITY DESIGN, INSTALLATION, SERVICE AND MONITORING**



**ELECTRIC VEHICLE CHARGEPOINTS**

Working with leading supplier **Evolt (Swarco)**, we offer a full range of electric vehicle chargepoints, from simple residential installations to fast, rapid charge points for commercial use. We are also registered to offer OLEV grant funding to homeowners and businesses for each qualifying charge point installed.

**FIRE SAFETY SYSTEMS**

T H WHITE is an approved **Gent 24 System Integrator**, specialising in design, supply and installation of Gent fire systems from **Honeywell**. We also supply and install fire alarms and associated accessories from **Advanced, Haes, Kentec, EMS, Hochiki** and **Apollo**. We work with clients to provide single standalone alarms or fully integrated solutions, as well as secondary solutions such as fire extinguishers



**SECURITY SYSTEMS**

T H WHITE Energy, Fire & Security is an NSI Gold-accredited Intruder and Security specialist with 26 years' experience in installing and maintaining commercial security systems. Our carefully chosen suppliers are **Honeywell, Risco, Texcom, Hikvision** and **Visonic** and we supply and install panels, detectors, PIRs, key fobs, keypads, as well as a range of wireless communication warnings and controls.



**BATTERY STORAGE**

Modern battery systems let you store power for when it's needed to minimise your reliance on the grid. T H WHITE has strong relationships with some of the world's biggest technology brands and is a Certified Installer for **Tesla Powerwall 2**. Our battery solutions can be standalone or linked to a solar installation and we analyse each application in order to specify the right technology.



**Servicing and monitoring contracts available across the range**  
**Call us today for a free, no obligation survey**  
**10% OFF YOUR FIRST SERVICE BOOKING\***

for any new or existing customer who takes on service and maintenance from a new department. For example, if you have an energy service contract and take out fire alarms servicing, then the discount would apply to your first booking of the new work.

**For example, save £100 on a £1,000 annual service bill with a simple phone call... 01380 726656**

\*Terms apply, available at <https://efs.thwhite.co.uk/servicing/>

**T H WHITE**  
**ENERGY, FIRE & SECURITY**

**01380 726656**  
[efs.thwhite.co.uk](https://efs.thwhite.co.uk)

**WINTER WARMERS**

**Extensive range of coats and waterproofs in-store now!**



**T H WHITE Country Stores**

**London Road, Marlborough SN8 2RN**  
**Mon-Sat: 8am - 5.30pm**  
**Sundays & Bank Holidays: 10am - 4pm**  
**Tel: 01672 518408**



**MAKE A SPLASH!**  
**Huge wellie selection – choose your style!**

**Knockdown, Tetbury GL8 8QY**  
**Mon-Fri: 8am - 5.30pm**  
**Sat: 8am - 12 Noon**  
**Sundays & Bank Holidays: Closed**  
**Tel: 01454 238181**

## NOVEMBER OFFERS

### VIERZONORD BOOT



The iconic Vierzonord is the boot of choice for everyday country life. Famous for being the first rubber boots with an adjustable, waterproof gusset, the Vierzonord boot also boasts an insulating neoprene lining that will keep you comfortable and warm all day long. **Supplied with free Boot bag and free boot jack.**

**£133.33**

### CT-160 BATTERY CHARGER

The CT-160 charger is designed for the charging of lead acid batteries with liquid electrolyte, 12V: from 25 to 160 Ah, 24V: from 15 to 90 Ah, Ammeter to indicate the charge and two charge speeds: Normal and 'Boost'



WAS £64  
NOW **£57**

### CLULITE LED TORCH PISTOL

Clulite CluB 18 A single high powered CREE LED and a focused 60mm diameter reflector combine to create an amazing white spot beam shining up to 600m with an impressive 3 hour duration.



WAS £58  
NOW **£44.99**

### HANDLEBAR MUFFS



WAS £33.33  
NOW **£29**



High quality handlebar muffs which protect the hands from wind chill. They also help as a 'brush guard' when in dense vegetation.



### MEN'S HOODIE



New Holland embroidery, pouch pocket, DryBlend technology with moisture-wicking properties, double lined hood with matching draw cord, twin needle stitching at waistband and cuffs, 1x1 rib with spandex, air jet yarn for a softer feel and to reduce pilling.

WAS £17.63  
NOW **£13.33**

## LORRY CRANES



### UNIMOG CRANE ON THE FARM

The Palfinger UK team had the pleasure of supporting Mercedes-Benz at their 'Unimog on the Farm' events.

These one-day events, held at locations across the UK, are aimed at individuals and businesses operating vehicles in the agriculture and arboriculture industries, showcasing the capabilities of the versatile Mercedes-Benz Unimog.

During the events, Palfinger UK displayed a Unimog-mounted PK 12.502 SH B boom crane, with a reach of 10.3m and capacity of 1040kg at that distance. The body preparation and fitting, crane mounting and body painting was all carried out in Palfinger UK's 17-bay workshops in Devizes, Wiltshire.

Additionally, visitors on each day were invited to take part in a fun, practical activity for a chance to win a Palfinger watch. The challenge - to manoeuvre a tennis ball attached to the crane hook around a series of positions onto the top of road cones, as quickly and accurately as possible.

National Key Account Manager for Palfinger UK, Tex Allen, commented: "This was an excellent series of events and we were delighted to be able to support our friends at Mercedes-Benz to raise the profile of the perfect pairing a Unimog vehicle with Palfinger crane. Being able to run the interactive competition brought some fun to our display too, and certainly brought attention to the vehicle."

Events were held at Mercedes-Benz Trucks Events Centre in Barnsley, Jimmy's Farm in Ipswich, Cotswold Farm Park in Cheltenham and The 3 Buffalo Farm in Scotland.

Speak to the Palfinger UK team today to learn more about the wide variety of Unimog and truck mounting options for Palfinger cranes - call 01380 733513 or visit [www.palfinger.co.uk](http://www.palfinger.co.uk)



## GROUND CARE

### SAVE 10% ON WINTER SERVICING - AND WIN A LUXURY CHRISTMAS HAMPER

Use our Earlybird programme to book a winter service for your groundcare machinery before 31 March 2020 to receive a 10% discount on labour and in-stock parts. AND, if you book by 30 November you will be entered into a draw to win one of four luxury Christmas hampers!

Our Groundcare service teams can service any make, any model and any machine. With specialist training and a wealth of industry experience, our teams work from fully-equipped workshops with state-of-the-art equipment to ensure your machinery is in top condition ready for the new season.

Not only do we offer fixed price servicing, we also provide up to 12 months warranty on parts and labour and carry out FREE software diagnostic checks. As examples of our great deals, we will carry out an end-of-season service on:

- Kawasaki Mule DX/DXT from **£385**
- Iseki SXG323 ride-on mower from **£385**
- Amazone Profihopper from **£550**

We will also carry out in-situ cutting cylinder regrinding **from just £85**.

You can view all the details and request your discounted Earlybird service online at [thwhitegroundcare.co.uk/servicing](http://thwhitegroundcare.co.uk/servicing), or just call any of our Groundcare branches listed on page 2.



## AGRICULTURE

### VÄDERSTAD PRE-SEASON DEALS

Buying ahead of next year's season is always a great way to save money and we are pleased to offer you some great finance packages on new Väderstad equipment.

If you place your Väderstad order with T H WHITE before 30 November this year, you can either: **Pay nothing for 3 months followed by 3 annual payments @ 1% fpa**, or **2 annual payments (1+1 @ 0% fpa**, or **4 annual payments (1+3 @ 1% fpa)**.

What are you waiting for?!

## MACHINERY IMPORTS



### NEW TURNTABLE WOODCHIPPER SHORTLISTED FOR SALTIX AWARD

The brand new Jensen A530 petrol engine turntable woodchipper has been shortlisted in the Saltex 2019 Innovation Awards (winners were due to be announced at the event on 30 October - after this edition of White's World went to press). This new 6" petrol powered woodchipper will be available for winter 2019.

The turntable allows the unit to be turned up to 270 degrees, enabling users to load the woodchipper from a range of angles around the machine and directly from the verge, not only saving time and effort, but ensuring improved safety for both the operators and any members of the public in the vicinity. The 270-degree rotating chute also means that users can fully configure the input and output directions for maximum efficiency and safety.

Available as a road-towable woodchipper, the new Jensen A530L turntable can be towed behind the operator's vehicle easily, and its galvanised steel chassis guarantees

reduced maintenance, outstanding resistance to damage, corrosion and wear, and a significantly extended life expectancy compared to other woodchipper brands.

The 35hp petrol engine offers supreme power and efficiency, whilst ensuring less pollution and nitrogen oxide emissions, contributing to a cleaner environment. This is also recognised as a benefit for those working in clean air zones or low-emission towns and cities, or for those tendering for large scale projects where diesel machinery is unfavourable.

Offering the same power and performance as the standard A530 - our most popular model and highly favoured by the industry - the A530 turntable can process up to 15m<sup>3</sup>/h of timber and brush, with additional benefits including electronic safety sensors fitted as standard, comprehensive toolkit fitted to the machine, built-in control box to record hours and servicing intervals, and incorporated storage box.



## T H WHITE PROJECTS

### POST HARVEST INSPECTION AND REPAIR

#### MATERIALS PROCESSING, DRYING, BULK STORAGE AFTERMARKET CUSTOMER SERVICE AND SUPPORT

Contact us now on 01380 723040 and ask for Kevin Alnwick or send a mail to [cssprojects@thwhite.co.uk](mailto:cssprojects@thwhite.co.uk)

After your plant has worked hard during the harvest period it's time to get it inspected, serviced and repaired if necessary ready for future operation.

- Health Check
- Detailed Report
- Spare Parts Sourcing
- Maintenance Plan
- Service Contract
- Free Advice
- Free Estimates
- Competitive Rates
- Safety Awareness

CALL US NOW AND BE PREPARED

GRAIN STORE EMERGENCY OUT OF HOURS HOTLINE: 07919 394602



REF: H1111046

Case 8240 Combine Harvester, autoguidance, hi-cap unload auger, engine compressor, luxury cab, magnacut **£POA**



REF: H1111351

Case IH Puma 200 T4B, 50kph, exhaust brake, air trailer brakes, adv hmc, 156l pump, 4 rear valves **£92,750**



REF: 61112530

New Holland T7.245 AC T4B, 50 kph, eco cvt, fender PTO control, full autoguidance **£105,000**



REF: 51114907

New Holland T7.230 SW MY18 (SWII), T4B 50 kph, Power Command, Michelin tyres **£95,500**



REF: 61116722

New Holland T6.145 Dynamic Command, T4B, 40 kph, Michelin tyres **£53,950**



REF: 51116449

New Holland T5.105 Utility, T4A, 40 kph, tyres: front 13.6R24, rear 16.9R34 rear **£37,850**



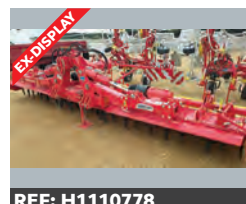
REF: 61110508

2017 Väderstad Carrier 525XL, Disc Cultivator, 5.25m Top Down 400, **£52,000**



REF: 61105502

2017 Väderstad Carrier 525XL, Disc Cultivator, 5.25m working width **£38,150**



REF: H1110778

2017 Pöttinger Lion 6000 Power Harrow, 6m folding width for tractors up to 270hp **£25,000**



REF: 11116388

New Holland Disc Cutter 320P Mower Condition **£10,950**

Sales Hotline: **01373 465941** (Mon-Fri 08.00-17.00) Out of hours: **07710 985957**

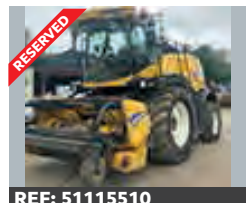
New: [www.thwhiteagriculture.co.uk](http://www.thwhiteagriculture.co.uk) Used: [www.thwhiteused.co.uk](http://www.thwhiteused.co.uk)

## HIGH QUALITY USED AGRICULTURAL EQUIPMENT



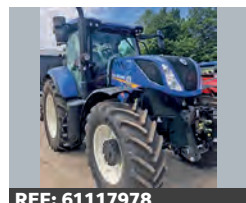
REF: 61115681

New Holland CR8.90 Combine, 30ft varifeed header, engine hrs 193, threshing hrs 116 **£POA CD**



REF: 51115510

2014 New Holland FR850 E2, Crop Processor, 2 x 8 knives, grass pickup **£110,000 RL**



REF: 61117978

2018 New Holland T7.260AC, T4B engine, MY18, 50kph, comfort pack, front linkage **£98,500 RL**



REF: J1118097

2012 New Holland T7.250, 50kph, Powershift, sidewinder, front linkage **£43,000 WF**



REF: 71117818

2014 New Holland T6.155 SWB, excellent condition **£36,200 AT**



REF: 41112274

Case IH Puma 200, T4B, 50kph, Michelin tyres 650/70R42 **£105,350 CM**



REF: 41116117

2015 Case IH Puma 200 ECO CVX, 50k CVT, front axle & cab susp, air brakes, front linkage **£58,000 SC**



REF: 11112865

2015 Manitou MLT 735 120 powershift LSU, fully dealer serviced, very nice condition **£39,000 CD**



REF: J1116832

2016, Manitou MLT 629, 5 hyd spools, 48" fixed forks, pneumatic seat with susp, air con **£37,000 WF**



REF: 11115797

2018 EX-DEMO Väderstad Rapid RDA600S Combi Drill, 3 rows of coulters, depth control **£82,000 CD**

### TRACTORS

John Deere 6320, MX Loader **£31,500 AT**  
2014 McCormick X60, loader **£24,000 RL**

### MACHINERY

EX-DEMO Kuhn Profile 24.2CL TMR Mixer Wagon, cross feeding, 2 vertical augers, anti overflow ring 5 point, programmable weighing system, 6 auger knives, k-nox augers **£39,950 CO**  
2019 EX-DEMO Kuhn FC9530 folding Triple Mower Conditioner, PTO, lights & signal **£POA CO**

2014 Manitou MLT629 Elite, Manitou headstock, good condition **£32,000 JH**  
2013 Manitou MLT629, Manitou headstock, good working order, 5450 hrs **£25,000 JH**  
2012 Manitou MLT627, 5000 hrs **£24,500 BL**  
2015 New Holland RB150 Roll Belt Baler, great condition, 3500 bales **£24,500 AT**  
2015, Väderstad 6.25 mtr XL Carrier **£37,000 RL**  
Väderstad RDS 600S, new metal work **£22,500 AT**  
2014 McConnell PA6565T Hedgecutter, 3-point linkage, 65hp pump, 6.5m reach, XTC control, 1.2m twin rotor head, rotor reverse **£13,500 JW**  
Spearhead Excel 605 Hedge Trimmer, 1.2m head, hyd roller **£12,500 AT**

### UTV/MULE

2017, Polaris Ranger UTV, diesel, electric power steering, tipping back, new rear tyres, tow ball **£8,500 SK**  
2016 Kawasaki Mule Pro DX, 4wd, diesel, manual tipping back, tow bar, VGC **£7,750 SK**

RB Ray Bennett 07710 985957  
PC Paul Churches 07702 724308  
SCT Steve Clucas-Tomlinson 07860 593339  
SC Stuart Crook 07831 249489  
AD Andy Daffurn 07860 331023  
CD Colin Davies 07860 401211  
NE Nigel Ellis 07860 247367

WF William Farr 07495 114325  
BG Bob Gallop 07831 883734  
JH Jamie Harraway 07826 917955  
SK Simon Knight 07860 712963  
RL Ryan Lanfear 07769 248602  
ML Marley Lawrence 07483 037516

BL Ben Linton 07495 114479  
CM Chris Martin 07919 044389  
CL Charlotte Osborne 07483 037516  
TR Tim Rochfort 07973 911934  
AT Andy Taylor 07831 255811  
JW Joe Woolley 07818 077591

All items offered are subject to remaining unsold. Prices shown do not include VAT.

BRANCHES: DEVIZES: 01380 722381 FROME: 01373 465941 HUNTLEY: 01452 830303 KNOCKDOWN: 01454 238181  
HEREFORD: 01432 352333 MARLBOROUGH: 01672 512328 TODDINGTON: 01242 620211 STOCKBRIDGE: 01264 811260

