



Tackling black grass



A-maize-ing headers!



Summer special offers on New Holland tractors and telehandlers

PLUS Väderstad supplement – DON'T MISS IT

- AGRICULTURE
- PROJECTS
- GROUND CARE
- DAIRY
- COUNTRY STORE
- TRAILER CENTRE
- LORRY CRANES
- CONSTRUCTION
- ENERGY, FIRE & SECURITY
- ONLINE STORE
- MACHINERY IMPORTS

## ENERGY, FIRE & SECURITY

### HOW FARM SHOPS, LOCAL AUTHORITIES, GOLF CLUBS, RETAIL, SPORT & LEISURE OPERATIONS CAN PLUG IN TO THE CHARGING CULTURE

The move to electric vehicles and zero emissions is well under way and will be driven by two factors: the cost of vehicles and the accessibility of charging points.

The Committee on Climate Change has already said it's likely that the cost of electric cars will be similar to that of petrol or diesel vehicles by 2024-5.

Meanwhile, Highways England is committed to ensuring that 95 per cent of its motorways and major A roads are within 20 miles of a charge point.

To move towards that goal Highways England has awarded a contract to Swarco UK Ltd to install electric charging points in the south of England.

**T H WHITE Energy, Fire & Security is partnering Swarco to install E-Volt charging points that comply with the highest requirements of British Standards.**

With around 230,000 electric vehicles already on the road at the end of 2018 and current forecasts suggesting that 30 per cent or more of vehicle ownership will be electric within five years, there are some great opportunities for companies, local authorities, retail, sporting and leisure operations to help staff and customers while boosting revenue.

#### CHARGER TYPES

Owners of electric vehicles will need to have a domestic charging point at home and T H WHITE has already been making these installations for customers. Typically these will charge a vehicle overnight on a low 7kWh rating, a charge taking 6-8 hours.



**Companies, councils, retail and leisure operations that prepare for the boom in electric vehicles can benefit from rewarding opportunities...**

Charging at home is fine, but one of the biggest steps forward in overcoming 'range anxiety' is the decision by more and more employers to provide charging stations at the workplace. These take the form of commercial **trickle chargers**, again using about 7kWh which is perfect for staff parked during an 8-hour working day.

Where faster charging is required – for example at a golf club where members might want to charge their vehicle while they are out on the course, a **speed charger** will draw around 22kWh and deliver a full charge in 3-4 hours.

There are situations where an even faster charge is needed – such as at a retail store, sports centre or food outlet – and this is where a **rapid charger** can be attractive, taking around 45 minutes to an hour for a full charge at 50kWh. All charging times will, of course, depend on battery size, type and available capacity.

#### BENEFIT OR REVENUE STREAM?

Commercial operators who install EV charging points can choose to provide them as a benefit or to regard them as a low-maintenance revenue stream. An employer providing charging points at the workplace might choose just to charge 'at-cost' for the electricity – both a considerable staff incentive and a fulfilment of corporate social responsibility encouraging the shift to zero emissions. At a retail outlet, leisure facility or similar, the operator can decide on an acceptable mark-up to every kilowatt

**Continued on page 2...**



News and information from the T H WHITE Group

**T H WHITE GROUP**

## GROUP

## WHITE'S WORLD

White's World is published monthly by T H WHITE. To contact our Divisions, call:

<b>Agriculture Knockdown</b>	<b>01454 238181</b>
Marlborough	01672 512328
Frome	01373 465941
Huntley	01452 830303
Hereford	01432 352333
Toddington	01242 620211
Devizes	01380 722381
Stockbridge	01264 811260

**Projects** 01380 723040

<b>Groundcare Knockdown</b>	<b>01454 238181</b>
Reading	0118 976 0088
Redditch	01527 597770
Stockbridge	01264 811260

<b>Dairy</b>	<b>Frome</b>	<b>01373 465941</b>
	Huntley	01452 830303

<b>Country Store</b>	<b>Marlborough</b>	<b>01672 518408</b>
	Knockdown	01454 238181

**Trailer Centre** 0118 976 0088

**Lorry Cranes** 01380 722381

**Construction** 01672 512328

**Energy, Fire & Security** 01380 726656

**Online Store** [www.thwhitestore.co.uk](http://www.thwhitestore.co.uk)

**Machinery Imports** 01264 811260

[www.thwhite.co.uk](http://www.thwhite.co.uk)

[info@thwhite.co.uk](mailto:info@thwhite.co.uk)

© T H WHITE Group 2019 E&OE  
Nursted Road Devizes Wilts SN10 3EA

**01380 722381**

To unsubscribe from T H WHITE Group marketing, please visit [www.thwhite.co.uk/unsubscribe](http://www.thwhite.co.uk/unsubscribe)

## WHITE'S WORLD ONLINE

WHITE'S WORLD is also available in digital form where stories can easily be reviewed by division. In the digital edition we include stories that may be received too late for print.

To sign up for digital updates visit <http://www.thwhite.co.uk/sign-up>. We will then send you a monthly email with links to all the top stories and offers. As always, you will have the option to unsubscribe at any time.

## GROUP

## SEE US AT THE SHOWS

**Confor Woodland Show**  
**MACHINERY IMPORTS (JENSEN)**  
Longleat, 5-6 September.

**Glos Root, Fruit & Grain Society Tillage Event** **AGRICULTURE**  
**WORKING DEMONSTRATION**  
Boddington Estates, GL51 0TJ,  
Wednesday 11 September.

**Frome Agricultural & Cheese Show**  
**AGRICULTURE DAIRY** West Woodlands  
Showground, 14 September.

## ENERGY, FIRE &amp; SECURITY

PLUG IN TO CHARGING Continued from front page

sold which would deliver a growing revenue stream as uptake of electric vehicles increases. Commercial sites with charging facilities are likely to be preferred by the growing number of potential customers with electric vehicles, generating added 'footfall'. Chargepoints are included on registry listings and web apps, with availability also being spread by social media, further raising site profile.

## CONTROL AND ANALYSIS

A typical dual socket installation at a small business usually costs between £3-10k depending on whether it's a wall or post-mounted charging point, the infrastructure and cabling etc. This cost includes not only the installation, but a first year service and a digital back office application. The latter uses a dashboard which enables the operator to control and track billing, analyse charge rates (hour, part day, full day), profitability, and to calculate CO2 savings. **Installers can also take advantage of OLEV grants (currently £300 inc VAT for each socket installed) to offset the initial investment.**

## QUALITY AND SAFETY

When it comes to installing EV charging points there's a wide choice of suppliers, but how will you know what you are getting? Different chargers and buildings

## APPRENTICE PROVES HIS SKILLS

**T H WHITE Apprentice Engineer Jordan Miners has scooped second place in an international competition – at his first attempt!**

The 'Engineers of Tomorrow' contest takes place every year at IFSEC International, UK & Europe's leading security event held at ExCel, London. The aim is to support and encourage the next generation of security engineers by pitting security apprentices against each other with a series of live, action-packed installation challenges throughout the three-day event.

Our very own Apprentice Engineer Jordan Miners was entered this year by Yeovil college, fully encouraged by the team at T H WHITE, to display his skills on an international platform.

Jordan has worked as an Apprentice Engineer for two years in T H WHITE's Energy, Fire & Security division.

With more than 60 engineers competing, working in teams of two – against each other, the challenge comprised three stages: to audit and pick

have different earthing systems so it's vital that the work is carried out correctly to avoid safety risks – not least electrocution.

When you use T H WHITE you will have the confidence of knowing that you are dealing with a fully approved installer and that the installation will conform to BS 7671, IET Wiring Regulations and The Code of Practice for Electric Charging Equipment Installation

When you make an enquiry our normal process is to carry out a site survey, discuss the types of charger best suited to the intended usage and then submit a detailed, costed proposal. On approval we will design the system and deliver a full turnkey solution. As all installations must be registered with the National Grid, we will

take care of all the necessary paperwork and processes for you.

At present T H WHITE is partnering with Swarco UK Ltd to carry out EV charging installations across central southern England, from Somerset in the west to Surrey in the east, Oxfordshire in the north to Dorset in the south.

## INTERESTED?

Call 01380 726656 and request your EV installation survey or visit [www.efstwhite.co.uk](http://www.efstwhite.co.uk) and complete the 'Get in touch' enquiry form.

out the faults on an existing system; to wire up two call points, two sounders and two smoke detectors into a CTEC fire panel; and to commission a new system and make sure it was fault free, at the same time answering technical questions about fire alarms.

"I was so pleased when I found out I had been selected," said Jordan, "because I had worked really hard at college to get through to IFSEC. On the day of the competition we felt nervous, but once we got started it was okay."

The competition tasks lasted an hour and a half, after which Jordan was just a point away from a first place finish. "Although that was annoying I was really happy with second place considering it was my first attempt. I'm determined to go again next year and get first place!"

T H WHITE runs an apprenticeship programme across many of its divisions encouraging trainees to combine day or block release at college alongside practical experience in the workplace.



## AGRICULTURE



## TACKLE BLACK GRASS WITH LOGIC

**Black grass is a serious issue for British arable farmers. As well as being tenacious once established, the weed is being introduced onto 'clean farms' across the UK via straw, imported manures, machinery, or even through purchased seed.**

Fortunately there are a number of ways in which farmers can tackle this challenging weed and the most successful regimes usually involve a combination of cultivation and chemical control. The need to avoid these plants building-up herbicide resistance is important and so in the Väderstad supplement with this issue of White's World we have looked at new cultivation techniques which can minimise chemical application.

But one of the difficulties facing farmers is that 80% of black-grass emergence occurs from August through to October. That would be the time when it could be destroyed most easily, but more than half winter cereal and most oilseed rape crops will have been sown before the end of September, meaning that the majority of black grass plants now emerge within crops.

**Logic's CTM600 Contact 2000** weed wiper provides an innovative answer, being designed to apply glyphosate direct to the target species during the active growing period in May to July when there is an adequate height differential between the main crop and black grass. By accurately setting the working height of the machine's unique, contra-rotating brush, only the weed plants are targeted with a liberal coating of chemical, ensuring rapid and effective weed control while eliminating chemical wastage and leaving non-targeted plants untouched.

Designed for mounting on a tractor's three point linkage, the Logic CTM600 has a 6m working width and a 270-litre on-board chemical tank to sustain work rates of between 13 acres (5Ha) and 20 acres (8Ha) per hour.

Not only does this method achieve significant chemical savings, it also minimises unwanted environmental effects.

The Logic CTM600 requires 2 double acting spool valves with a minimum hydraulic oil flow rate of 50 litres per minute. One pair of spool valves is used to drive the brush rotation motors and the second is split using the hydraulic function controller to operate the outer boom, break back and raise/lower features. A 12v electric pump supplies the chemical at a controlled rate via an in-cab control unit, ensuring the correct saturation of chemical on the brush, depending on weed density. An override button can be used at any point to deliver extra chemical to the brush for treating more dense area of weeds.

**Want to know more? Just contact your Agriculture rep or any T H WHITE Agriculture branch.**



## CTM600 IS EFFECTIVE ON THE FARM

**Farm manager Luke Hargrave is responsible for 1,000ha of arable land W H Strawson (Farms) Ltd, where black grass has become a major problem. As part of his strategy to keep on top of it he took delivery of a Logic CTM600W in May 2018 and put it straight to work.**

"It's superb," he says. "The effective brush design ensures maximum herbicide take up by the weeds and the hydraulic nozzle application to the brush makes it fully controllable. It kills 95 per cent of any black grass in a single pass, with minimal chemical used."

"We wait until the black-grass is just above the wheat with enough leaf exposed to guarantee positive contact, but before seeds are viable."

Treatment areas range from patches to whole fields and the farm's RTK network ensures accurate coverage. The 6m working width means additional wheelings are created where treatments have to be made, but according to Luke the benefits

far outweigh any additional costs.

"We calculated the additional crop area run over by the tractor on rowcrop wheels and it's minimal compared either to the risk of black grass maturing and spreading its seeds, or sacrificing affected crop areas by spraying it off with a conventional sprayer."

Using the contact fits in well with the farm's environmental policies, significantly reducing chemical use. "We comply with label and manufacturer dilution rates and the on-board 270-litre tank lasts more than a day. It doesn't drip, we can accurately match the application rate to suit the weed population and we know exactly what we are putting on. The tractor runs at tick-over most of the time so fuel use is negligible. The Logic CTM600W has given us an opportunity to tackle our biggest weed problem effectively with minimal chemical use while saving the crop."

**MACHINERY IMPORTS**

**DOUBLE AWARDS FOR FERRIS**

The team behind the distribution of Ferris mowers in the UK are celebrating a double victory, with awards presented at shows at either end of the country.

Not only are they honoured to have been awarded a Certificate of Commendation for the Ferris ISX™800 mower at the Royal Highland Show Technical Innovations Awards, but also a 'Commended' award for the Ferris 400S through dealer Andrew Symons Ltd. at the Royal Cornwall Show.

Innovative features of the ISX™800 include the all new ForeFront double-wishbone Suspension System™ – a first in professional mowing. Ferris is already recognised for being the only commercial mower



FERRIS ISX™800

manufacturer with patented suspension, but the new ForeFront system advances the technology further with industry leading comfort, safety and cut quality on a compact, manoeuvrable zero-turn mower.

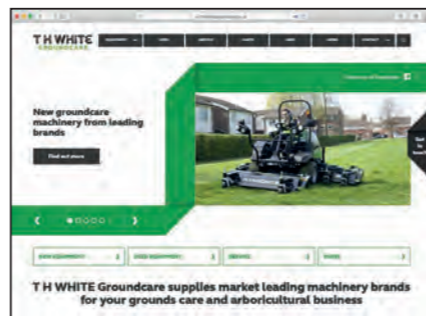
The Ferris 400S was recognised on the stand of groundcare machinery dealer Andrew Symons at the Royal Cornwall Show as part of the annual Machinery Competition, with exceptional representation to the deciding committee

from the Andrew Symons Ltd. team and in particular Groundcare Sales Representative, Lee Hatter.

To find out more and book a free, practical demonstration of the award winning ISX™800 and 400S, or any other Ferris zero-turn mower, please visit [www.ferrismowers.co.uk](http://www.ferrismowers.co.uk).

**GROUND CARE**

**NEW WEBSITE GOES LIVE**



T H WHITE Groundcare has a new website – [thwhitegroundcare.co.uk](http://thwhitegroundcare.co.uk).

The site has been redesigned in the family style of the other new T H WHITE websites making it easier to navigate. It's easy to find all you need about our new machinery brands, used machinery, hire, service and parts. You can also get in touch with us direct from the site to request a demonstration or make an enquiry. Take a look!

**AGRICULTURE**

**SUMMER SPECIALS ON NEW HOLLAND TRACTORS AND TELEHANDLERS**

We are celebrating the busiest season of the year with some great offers on NEW HOLLAND tractors and telehandlers which will help you to save money, benefit from some great finance plans and enjoy extras at NO ADDITIONAL COST.

Topping the offers is the new T7 LWB range with Stage V emission compliant engines. Fitted with PLMConnect telematics as standard from the factory, this offer includes twelve months subscription FREE OF CHARGE. PLMConnect allows you to manage your fleet from the comfort of your office using a mobile network. You can stay in touch with your machines at all times, and you can even send and receive real-time information to save time and enhance productivity.

The T7 LWB is available in four models from 225-270hp. Head-turning styling includes new 'cat-eye' lights, while the 'gull wing' profile roof is packed with LED cab lights for true round the clock farming. The new Nef engines are fully compliant with the even more stringent Stage V emission standards and develop between 225-270hp(CV) whilst maintaining outstanding fuel economy.



5+55 at 0% FINANCE is now available on the TH range of telehandlers. Easily tailored to suit individual profiles, this finance offer is an industry leader. Based on a maximum subsidy of 50% of the retail price or the balance to finance, whichever is lower.\*

Finally we are delighted to announce the new T6.160 Electro Command – the only six cylinder tractor in its power segment – with a special introductory discount. Details from your rep.

\*Terms and conditions apply – please contact T H WHITE for full details. All offers on this page are valid until 30 September 2019.



New Holland T7 LWB with PLM Connect

**LORRY CRANES**

**NEW APPROACH FOR UPLIFTING CALENDAR**

For the first time, the dedicated Lorry Cranes division of T H WHITE Group – Palfinger UK – is producing its own annual calendar to distribute to customers and partners across the UK.

Celebrating the diversity of Palfinger loaders in use every day throughout the country, the calendar features photographs submitted by individuals and businesses from across the UK which showcase a wide variety of Palfinger products in use in a range of applications. It is the result of a social media competition, the winning photos being selected by Palfinger UK staff from the Devizes, Bradford and Falkirk depots.

Visit the Palfinger UK Facebook page at [www.facebook.com/PalfingerUK](http://www.facebook.com/PalfingerUK) to see the full line-up of photos featured.

**PALFINGER UK**  
PART OF T H WHITE GROUP

CALENDAR 2020

- PALFINGER loader cranes
- EPSILON construction & timber cranes
- Hookloaders
- Skiploaders
- Crawler cranes
- Orteco piledrivers
- Alucar timber bunks
- Sales, servicing, parts, vehicle body building, repairs, compliance testing, training

[www.palfinger.co.uk](http://www.palfinger.co.uk)

01380 733513

DEVIZES • BRADFORD • FALKIRK



**TRAILER CENTRE**

**T H WHITE EXITS IFOR WILLIAMS TRAILER FRANCHISE**

With effect from 1 September 2019, T H WHITE will cease to be a distributor of Ifor Williams Trailers and will no longer operate its Trailer Centre business.

The site at Aborfield, Reading, will now be fully focused on providing sales, service and part for professional Groundcare equipment. The decision is part of a re-focusing of resources throughout the T H WHITE Group and August will be dedicated to clearing remaining trailer stock lines.

Ifor Williams is taking steps to appoint a new distributor for the Thames Valley region, which hopefully will be announced shortly. From September customers will be able to locate their most convenient Ifor Williams sales, service and parts centre by visiting [iwt.co.uk](http://iwt.co.uk).

**HARVEST BREAKDOWN & SERVICE**

There's enough to think about at harvest time without worrying whether your equipment is going to let you down.

T H WHITE Projects can help with regular servicing and maintenance of driers, cleaners, conveyors,

Harvest emergency hotline (24/7): 07919 394602

**T H WHITE PROJECTS**

Nursted Road  
Devizes  
Wiltshire SN10 3EA  
01380 723040

augers and elevators to ensure they are ready for the busy period. We can supply and fit parts for most makes of equipment, new or old. If you do suffer a breakdown we can be on the spot fast to get you back in action. Just call our hotline.



[www.thwhiteprojects.co.uk](http://www.thwhiteprojects.co.uk)  
[serviceprojects@thwhite.co.uk](mailto:serviceprojects@thwhite.co.uk)

**NEW T6.160 ELECTRO COMMAND™ SIX APPEAL**

ENJOY VERSATILITY, RELIABILITY AND EXCLUSIVITY WITH THE ONE AND ONLY 6-CYLINDER ENGINE IN ITS POWER SEGMENT.

- Proudly made in Basildon, the home of iconic 6 cylinder models
- 164 HP maximum horsepower with Engine Power Management
- NEF 6-cylinder 6.7 litre engine provides 12% more torque for greater pull-away capabilities and engine lugging.
- 50% higher engine braking in downhill operations. Exhaust Brake option provides an additional +24% Engine Braking.

**T H WHITE AGRICULTURE** **NEW HOLLAND AGRICULTURE**

Additional discount available as an introductory offer – Speak to your T H WHITE rep

**AGRICULTURE DAIRY**  
**DON'T MISS OUT ON CPSG GRANTS**



The Government has re-opened its Countryside Productivity Small Grants (CPSG) scheme enabling farm businesses to apply for new grants for investments in new technology, such as precision land management and dairy herd management.

A total pot of £15 million (grants between £3,000 and £12,000) is available for all farm types, including livestock, horticulture, dairy and arable businesses.

Many new items have been added to the list of equipment covered by the grants, so speak to T H WHITE Agriculture or T H WHITE Dairy today to see if your planned investment qualifies, or go to [www.thwhiteagriculture.co.uk/](http://www.thwhiteagriculture.co.uk/)

cpsg-grants where you will find a link to the Government Handbook listing eligibility criteria.

Even if you received a grant up to £9,000 in Round 1 of the scheme, or your application was withdrawn or rejected, you can still apply in Round 2. The grants are designed to support investments which will help achieve improvements in technical efficiency, animal health and welfare, resource efficiency or nutrient management. The scheme is open for applications until midday on 3 September 2019 which can be made at [www.cpsmall.org.uk](http://www.cpsmall.org.uk)

A selection of eligible T H WHITE Dairy equipment is shown below.



**SUMMER SEASONAL OFFERS**

**SWARFEGA 4ltr**

Advanced formulation, solvent-free heavy duty hand cleanser containing non-abrasive scrubbers for a deep-down cleaning action and moisturiser to help care for the skin. Removes ingrained oil, grease and general grime. Lemon or Orange.

**£16.99**

**Swarfega**



**FAST-FIT TINES**

KUHN harrow Fast-Fit blades are made from steel to provide the best compromise between hardness and resilience. Cut steel guarantees consistent part profile and high work output.

**£9.99**



**MANITOU HANDLING YOUR WORLD OVERALLS £56**

**THE BEST BOOTS IN THE WORLD!**

**ONLY £95** for any stocked pair.

We now have the range of world famous Redback boots, safety and non-safety. Crafted from thick and supple leather, Redback boots are produced for maximum protection and comfort. Resistant to water, heat and oil.



**T H WHITE AGRICULTURE**

FROM T H WHITE AGRICULTURAL PARTS STORES  
 PRICES SHOWN EX-VAT For current offers see:  
[www.thwhiteagriculture.co.uk](http://www.thwhiteagriculture.co.uk)

**AGRICULTURE**



**HIGH HORSEPOWER HEAVY METAL DEMO**

Case IH and T H WHITE Pro Agri are hosting a High Horse Power Tillage Event on Thursday 29 August 2019, from 10am to 4pm.

The free-to-attend event is being held on a 180-acre field at Norman Count Velcourt Farm, East of Salisbury, just off A30, postcode SP5 1SU.

There will be working demonstrations of a Case IH Quadrac 540 with CVX transmission (a combo unique to T H WHITE), Magnum 380 Roadtrac CVX, as well as a selection of Optum and Puma tractors, together with Pottinger tillage equipment including a 10m set of terra discs. Many other items will also be on display.

Refreshments will be available, but we would like to know how many guests to expect so please **RSVP** to Chris Martin on 07919 044389 or email [chris.martin@thwhite.co.uk](mailto:chris.martin@thwhite.co.uk)

**20% EARLY BIRD DISCOUNTS FOR WINTER SERVICING**

It may seem strange to be talking about winter servicing while we are still in the middle of summer, but the biggest savings await those who book early.

In fact, by booking straight after the season for a winter period service with T H WHITE you can **save a massive 20%** on servicing and in-stock parts.

What makes this great deal even better is the fact that T H WHITE will service **ANY MAKE, ANY MODEL** and **ANY AGE** of equipment. Our technicians are manufacturer-trained and our workshops house state-of-the-art diagnostic equipment. You couldn't put your trust in better hands.

So make a note to treat your kit to the professional treatment to ensure it's in good running order well in time for next season and **save money at the same time.**

Booking early will ensure you receive the highest level of discount. Bookings open on 1 September and, as strict booking deadlines apply, don't be late! Look out for a reply-paid mailer with all the details and a form for making a service booking which will be included in the September issue of White's World.

**AGRICULTURE**

**A-MAIZE-ING HEADERS**

Although maize is traditionally one of the last crops to be harvested, now is the time to be thinking about the kit needed to make this year's harvest as efficient and profitable as possible.

New Holland has been busy developing an all-new maize header range embracing rigid and flip-up versions in various sizes. The stalk rolls now have four knives for aggressive pulling down of stalks of any size, and the deck plates are electronically adjustable from the cab to adapt to changing stalk and cob size.

Optional rotary dividers further enhance the already smooth crop intake in laid maize crops. The front profile has been redesigned to expose the gathering chains, ideal when working in laid maize, as the stalks are actively ratcheted into the header to ensure they are all



collected, as well as speeding up harvesting.

For fine chopping and superb spreading of mulched material, integrated stalk choppers can be fitted. This is perfect for minimum or zero tillage operations. Two in-built header adjustment settings have been developed to ensure your maize header always works at the most efficient setting for you. The rugged lynch pin

enables overall point adjustment and this can be further fine-tuned by altering the bolt to achieve specific cutting heights.

The 980CR rigid maize header is available with 5, 6, 8, 12 or 16 rows, while the 980CF flip-up version can be ordered with 6, 8 or 12 rows.

Don't delay - talk to us today! Just contact your T H WHITE Agricultural sales rep for all the details.

**AGRICULTURE**



**AVEBURY PLOUGHING MATCH 2019**



The Avebury Ploughing Association will be holding its celebrated Annual Ploughing Match this year on Saturday 28 September.

The Ploughing Association has been running annual competitions since the days of horse ploughs and must be one of the oldest in the country. It is still going strong thanks to the tremendous local support which it receives from both farmers and ploughmen in the area.

This year the match will take place at Rabson Manor Farm, Winterbourne Bassett, by kind permission of Messrs W K Horton and Sons.

There is a broad range of categories, so if you would like to compete please visit [aveburyploughingassociation.co.uk](http://aveburyploughingassociation.co.uk) where you will be able to download an entry form.



**KEEP ON TOP OF SUMMER GROWTH**

This year's summer weather has provided ideal growing conditions for hedgerows and verges, meaning that the hedgecutting season is currently at its peak.

T H WHITE is a major UK stockist of McCornel hedgecutting equipment, and we can supply the full range of power arms suited to all applications.

But have you considered a pre-owned power arm? McCornel equipment is built to last, so **buying a used power arm could be a smart move, saving you money and giving you a machine that still has a long life ahead of it.**

At the time of going to press we have

two pre-owned McCornel PA 6565T power arms available. This model offers a 6.5m reach to tackle intensive verge mowing and hedge cutting, XTC control, a 65hp pump and electric rotor control and oil.

The first, at just £11,500+VAT, has a 1.2m MultiCut head and is in very good condition. For details call Paul Churches on 07702 724308.

The second, in outstanding condition, features the world's first 1.2m dual rotor flailhead and is offered at £13,500+VAT. You can see photos of this at [thwhiteused.co.uk](http://thwhiteused.co.uk), or call Joe Woolley on 07818 077591.

**TOTAL CROP PACKAGE SOLUTION**



**Talk to us TODAY!**

**T H WHITE AGRICULTURE**

**Quality product • Interest-free plan CONTACT YOUR LOCAL PARTS DEPARTMENT**

# COMBATING BLACK GRASS WITH ULTRA-SHALLOW TILLAGE

**BLACK GRASS – Alopecurus Myosuroides Huds – is one of the biggest agronomic challenges facing UK arable farmers today.**

This invasive weed thrives on heavy soil, particularly where drainage is poor. On light soils it's a problem in wetter areas. About 80 per cent of seeds germinate in the autumn – hot, dry summers see strong early autumn germination, while cool, wet autumns usually result in increased dormancy and delayed germination. The seeds can remain dormant for up to 20 years and the plant is becoming increasingly resistant to herbicides.

If left untreated, black grass will vigorously compete with the crop, contaminating it and reducing yield. Effective control is therefore a must and Väderstad has developed a unique ultra-shallow tillage system to help combat it.

The first step in identifying and removing black grass is to encourage it to germinate. More than 90 per cent of the seeds germinate at a depth of 2 to 2.5cm and germination is triggered by light, so to bring the seeds to the optimum depth, as well as ensuring good seed-to-soil contact, Väderstad has designed the **CrossCutter Disc** which provides full cut-out at only 2-3cm working depth over the full working width.

Each CrossCutter Disc has an 11.5cm wide contact area to the soil

and is individually mounted on its own rubber suspended disc arm which enables the discs to follow the ground contour accurately, thus ensuring very even results. The Cross Cutter discs can be fitted to the Väderstad Carrier disc cultivator which is available in 3 to 12m working widths.

This ultra-shallow tillage ensures the seeds will germinate into a stale seedbed when you want them to. The CrossCutter disc's unique cutting intensity crushes, chops and mulches in one single pass and any residual black grass can then be treated easily with herbicides.

The CrossCutter Disc is excellent in oilseed rape stubble and in cover crops, while also enabling great advantages in grain stubble and on cultivated land, encouraging fast residue breakdown and providing great conditions for the next crop.

It has also been proven that the optional straw harrow fitted to the front of a Carrier with CrossCutter discs will germinate more black grass.

Because CrossCutter Discs move substantially less soil than conventional discs, it also means that less fuel is used, but that doesn't mean it's slow – far from it – the recommended working speed is 15-20km/h.

For full details of black grass control methods and the full range of Väderstad machinery, please contact your T H WHITE Agriculture rep or your local branch (Telephone numbers overleaf).



## SEE FOR YOURSELF

T H WHITE's 2019 season Demonstration Fleet includes the Väderstad TD400 TopDown cultivator and the Rapid RDA600S seed drill.

SEE FOR YOURSELF JUST WHAT THEY CAN DO. YOU CAN REQUEST A DEMO ONLINE AT [www.thwhiteagriculture.co.uk/get-in-touch](http://www.thwhiteagriculture.co.uk/get-in-touch) OR BY CALLING YOUR AGRICULTURAL REP.



Rapid RDA600S seed drill



TD400 TopDown cultivator



**T H WHITE**  
AGRICULTURE

## CULTIVATION PARTS AT SPECIAL PRICES!

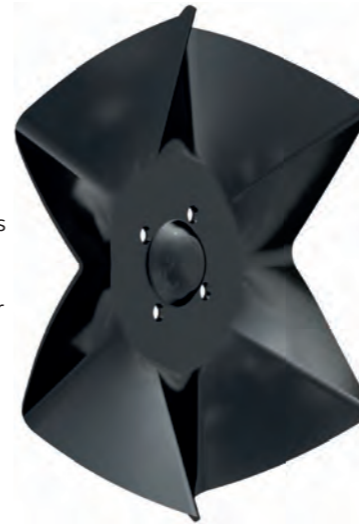


### CROSSCUTTER DISC

By opening up the possibility to perform an intensive full tillage at ultra-shallow working depth, the CrossCutter disc has positioned itself as the next revolution in the disc cultivator sector. Its unique cutting intensity crushes, chops and mulches in one single pass.

For Carrier s/n 6300>

WAS £52.90 **£44.00**



### COULTER DISC



WAS £24.90  
**£20.50**

The Väderstad discs are manufactured from high quality V-55 Swedish steel at the fully-owned Väderstad genuine parts manufacturing SPH (Svensk Presshårdning), located close to the factory and head office in Sweden. The production reflects the same top-of-the-line product philosophy as all Väderstad products, which altogether guarantees the best value available in the market place.  
For Rapid s/n 1500-16000

**MARATHON POINT £55.00**  
50/80mm Normal retail **£64.90**

Reinforced hard metal in Wolfram carbide gives Marathon a lifetime 8 - 10 times longer than a standard point. Preserved sharpness ensures correct attack angle and working depth, which provides optimal soil quality across the whole surface.  
For Cultus, Opus, Swift and TopDown.

**MARATHON POINT 80mm**

WAS £67.90 **£58.00**



### MARATHON BREAKMIX POINT

The BreakMix point combines the advantages of breaking compactions with a very intensive mixing. BreakMix adds versatility, lowers input cost and more importantly improves the agronomical working results. The BreakMix point is intended for primary or secondary tillage, on farms with heavier soils with risks of compaction.  
For Cultus, Opus and TopDown



WAS £68.90  
**£60.00**



### COULTER

Recurrent tests demonstrate that Väderstad's specially hardened coulters with hard metal plates in wolfram carbide generate the best drilling precision and work results across their entire service life.  
For Rapid s/n 899 >

WAS £35.90 **£30.00**

#### Contact T H WHITE's Parts Departments:

Frome, Somerset	01373 465941	Huntley, Glos	01452 830303
Knockdown, Tetbury, Glos	01454 238181	Devizes, Wilts	01380 722381
Toddington, Glos	01242 620211	Stockbridge, Hants	01264 811260
Marlborough, Wilts	01672 512328	Hereford, Herefordshire	01432 352333

Find us on Facebook  
@THWAgiculture

[www.thwhitestore.co.uk](http://www.thwhitestore.co.uk)

**T H WHITE**  
AGRICULTURE

Offers valid until 30 September 2019. Subject to availability

Prices shown exclude VAT. Subject to availability and change. E&OE

## BIG NAMES IN USED EQUIPMENT



REF: 51115510

2014 New Holland FR850 Forage Harvester, crop processor, 2x8 knives, grass pickup **£110,000 RL**



REF: 71117026

2012 John Deere T560 Combine, 22ft header & trailer, Zurn rape knife, 1100 hrs **£103,000 AT**



REF: J1117320

2018 New Holland T6.180 16 x 16 Electro Command, air con, air seat, auto PTO, excellent **£59,250 BL**



REF: 51110788

2016 New Holland T7.190, 50kph, c/w semi p/shift, joystick, very good condition **£59,000 JW**



REF: 71117562

2015 New Holland T6.165, 50kph, front linkage, auto transmission, PTO, cab suspension **£48,000 AT**



REF: 11116719

2014 New Holland T6.175, 50 kph, Q66 loader with electric control, 6175 hrs, very good **£37,500 SC**



REF: 41116117

2015 Case IH Puma 200 CVX, 50k ECO CVT, front axle & cab susp, air brakes, front linkage **£58,000 SC**



REF: 41116610

2013 Case IH Puma 185 Powershift 50kph, suspended cab & front axle, air trailer **£30,000 SC**



REF: 51115523

2018 Manitou MLT741, vario transmission, 7m reach, 4.1 tonne lift capacity, 260 hrs **£66,000 JW**



REF: J1116462

2014 Manitou MLT 629, premium spec, pick-up hitch, 460/70R24 tyres, immaculate **£37,000 WF**

### TRACTORS

2015 New Holland T7.235 LWB Auto Command, 3100 hrs, excellent **£64,000 AT**  
 2014, Kubota M135GX, 850 hrs from new, 2 rear spools, 40kph, front susp **£36,000 RD**  
 2012, Case IH Puma 180 Powershift, 50 kph, 650/42 tyres, AFS300 screen **£29,950 SC**

### MACHINERY

2016, Kverneland Exacta, tidy **£10,000 WF**

RB Ray Bennett	07710 985957
PC Paul Churches	07702 724308
SCT Steve Clucas-Tomlinson	07860 593339
SC Stuart Crook	07831 249489
AD Andy Daffurn	07860 331023
CD Colin Davies	07860 401211

2011 New Holland BB7060 Baler, 40000 bales, good working order **£7,500 AT**  
 2014 Kuhn FC313F-FF, front mounted, 8 disc cutterbar, 3.1m cut **£5,500 AT**  
 2012 Kuhn FC313, mounted 8 disc cutterbar, 3.1m cut, hyd lift control, V finger conditioner, wide swath kit **£5,250 AT**  
 2017 Väderstad TD400, Ex-Demo **£52,000 CO**  
 2015 Väderstad CR625XL Disc Harrow, 6.25m XL carrier, excellent **£37,000 RL**

RD Rhodri Davies	07775 003460
NE Nigel Ellis	07860 247367
WF William Farr	07495 114325
BG Bob Gallop	07831 883734
JH Jamie Harraway	07826 917955
SK Simon Knight	07860 712963

2010 Hardi Commander, 4500ltr tank, 24m delta force boom, excellent **£17,000 PC**  
 2016, Manitou 629, 48" fixed forks **£37,000 WF**

### MULE/UTV

2016 Kawasaki Mule Pro DXT UTV, diesel, half cab, road legal, c.1,000 hrs **£9,200 AD**  
 2017 EX-DEMO - Honda UTV 700M2, two year warranty, only 124 hrs from new, rare green panels, tow bar, digital dash with service indicator, 12v charging socket **£10,990 TR**

RL Ryan Lanfear	07769 248602
BL Ben Linton	07495 114479
CM Chris Martin	07919 044389
TR Tim Rochfort	07973 911934
AT Andy Taylor	07831 255811
JW Joe Woolley	07818 077591

Sales Hotline: **01373 465941** (Mon-Fri 08.00-17.00) Out of hours: **07710 985957**

New: [www.thwhiteagriculture.co.uk](http://www.thwhiteagriculture.co.uk) Used: [www.thwhiteused.co.uk](http://www.thwhiteused.co.uk)

In addition to our usual selection of the best used agricultural equipment on the market we also have a selection of ex-demo, ex-hire and ex-display stock offers at great prices.

Although some items may show signs of light use, they are without exception high quality machines and implements. All items will be fully checked by our technicians as well as being warranted by T H WHITE.



REF: H1111046

Case 8240 Combine Harvester, autoguidance, hi-cap unload auger, engine compressor, luxury cab, magnacut **£POA**



REF: H1112276

Case IH LB34XL Big Baler 120 x 90, packer stuffer, electric bale length kit, auto greasing **£POA**



REF: H1111351

Case IH Puma 200 T4B, 50kph, exhaust brake, air trailer brakes, adv hmc, 156l pump, 4 rear valves **£92,750**



REF: 61112530

New Holland T7.245 AC T4B, 50 kph, eco cvt, fender PTO control, full autoguidance **£105,000**



REF: 51116338

New Holland T6.145 DC, 40kph, ECO 24x24 trans, auto PTO, 4wd axle, fixed rims **£53,950**



REF: 51116447

New Holland T5.105 DC, 40 kph, 40kph, 24x24 hyd PTO, rear axle ISO heavy duty, Front Fenders **£36,950**



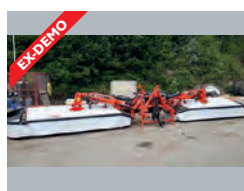
REF: 61114078

2018 Manitou MLT741 140 Elite, Deutz age 4 engine, 136hp, m-vario + hyd cvt trans, **£68,000**



REF: 51111426

Kuhn Profile 24.2CL TMR Mixer Wagon. cross feeding, 2 vertical augers, anti overflow ring 5 point **£39,950**



REF: 51115594

Kuhn FC9530 Folding Triple Rear Mower Condition, PTO, lights. Avail with FC3125 Front Mower Cond **£POA**



REF: 11116338

New Holland Disc Cutter 320P Mower Condition **£10,950**

All items offered are subject to remaining unsold. Prices shown do not include VAT.

BRANCHES: DEVIZES: 01380 722381 FROME: 01373 465941 HUNTLEY: 01452 830303 KNOCKDOWN: 01454 238181  
 HEREFORD: 01432 352333 MARLBOROUGH: 01672 512328 TODDINGTON: 01242 620211 STOCKBRIDGE: 01264 811260

