

AGRICULTURE



HEADS UP FOR OUR NEW HEADERS

T H WHITE Agriculture has become a supplier of MacDon's Draper series of combine headers. These exceptional headers offer unrivalled harvesting performance, delivering outstanding results and productivity.

Available in sizes up to 13.7m (45ft), MacDon FlexDraper® and Draper headers benefit from more than 70 years' experience making harvesting equipment for farmers on the rich prairie lands of Winnipeg and Manitoba in Canada. A world-leader in harvest technology, MacDon works directly with producers and harvesters in some of the toughest conditions around the world to ensure that its headers deliver worry-free harvesting performance with any crop, in any conditions, with any major brand of combine harvester.

At the heart of MacDon's designs is the instant response **Active Float System** which provides 4.8 degrees of lateral float and 178 mm (7in) of vertical float independent of

the combine feeder house. That means you can cut extremely close to the ground without pushing soil. The operator has **On-the-Go Control** - from the driving seat - of ground pressure, cutting height and fore-aft header tilt, while **Active Crop Flow** gently places crop on the side drapers heads-first and swiftly moves it onto the feed draper, where it's scooped up into the combine's feeder housing. This promotes peak combine efficiency by saving fuel, improving threshing action, creating better straw distribution, and allowing for a more productive harvest overall.

These are true **multi-crop headers** that are able to harvest cereals, oil seeds, beans - just about any crop in any condition. You can see a video of MacDon headers in action at thwhiteagriculture.co.uk or our Facebook page @THW Agriculture. If you would like to demo a new MacDon header this season, speak to your T H WHITE rep or contact us through the website. We think you will be impressed...



TOTAL CROP PACKAGE SOLUTION



Talk to us TODAY!

T H WHITE
AGRICULTURE

Quality product • Interest-free plan
CONTACT YOUR LOCAL PARTS DEPARTMENT

News and information from the T H WHITE Group

T H WHITE
GROUP



LOADED! Manitou telehandlers ready-to-go



Big lift for Wiltshire Air Ambulance



0% finance, discounts and extended warranties on Case IH tractors and combine harvesters

AGRICULTURE

PROJECTS

GROUND CARE

DAIRY

COUNTRY STORE

TRAILER CENTRE

LORRY CRANES

CONSTRUCTION

ENERGY, FIRE & SECURITY

ONLINE STORE

MACHINERY IMPORTS

GROUP

WHITE'S WORLD

White's World is published monthly by T H WHITE. To contact our Divisions, call:

Agriculture Knockdown	01454 238181
Marlborough	01672 512328
Frome	01373 465941
Huntley	01452 830303
Hereford	01432 352333
Toddington	01242 620211
Devizes	01380 722381
Stockbridge	01264 811260

Projects 01380 723040

Groundcare Knockdown	01454 238181
Reading	0118 976 0088
Redditch	01527 597770
Stockbridge	01264 811260

Dairy	Frome 01373 465941
	Huntley 01452 830303

Country	Marlborough 01672 518408
Store	Knockdown 01454 238181

Trailer Centre	0118 976 0088
-----------------------	----------------------

Lorry Cranes	01380 722381
---------------------	---------------------

Construction	01672 512328
---------------------	---------------------

Energy, Fire & Security	01380 726656
------------------------------------	---------------------

Online Store	www.thwhitestore.co.uk
---------------------	-------------------------------

Machinery Imports	01264 811260
--------------------------	---------------------

www.thwhite.co.uk
info@thwhite.co.uk

© T H WHITE Group 2019 E&OE
Nursted Road Devizes Wilts SN10 3EA

01380 722381

To unsubscribe from T H WHITE Group marketing, please visit www.thwhite.co.uk/unsubscribe

WHITE'S WORLD ONLINE

WHITE'S WORLD is also available in digital form where stories can easily be reviewed by division. In the digital edition we include stories that may be received too late for print.

To sign up for digital updates visit <http://www.thwhite.co.uk/sign-up>. We will then send you a monthly email with links to all the top stories and offers. As always, you will have the option to unsubscribe at any time.

GROUP

WOULD YOU LIKE TO WORK FOR T H WHITE?

The T H WHITE Group is a forward-looking company with a 187-year history. We offer some great career opportunities across a range of business sectors in widely distributed parts of the country. As well as seeking qualified individuals we also run a number of apprenticeship schemes. You can see all the current vacancies at www.thwhite.co.uk – just click the 'Careers' tab. You can also download application forms. Take a look today – it could be the best move you ever make!

MACHINERY IMPORTS

SPIDER CLIMBS TO NEW HEIGHTS

Visitors to Safety & Health Expo at ExCeL London in June were fascinated by a large, yellow Spider, which took over stand SH1040 for three days.

This was not brightly coloured arachnid, but a Spider 2SGS remote controlled slope mower. It was displayed on a 55 degree gradient, highlighting the possible working angle of the mower with an integrated hydraulic winch, or 40 degrees completely independently.

Standard mowers can present



extreme safety threats on steep slopes and high risk areas such as alongside highways and railway tracks, beside waterways and reservoirs, or at airfields and military sites, but remote-controlled Spider mowers are ideal for all such situations. Find out more and book your free Spider demonstration at a location and time convenient to you, visit www.thwhite.co.uk/machinery-imports/spider.

AGRICULTURE



TWO T6 TRACTORS FOR RAGLAN FARM PARK

Since the Williams family threw open their barn doors to the public in June 2016, Raglan Farm Park has quickly grown to become a firm favourite for young and old alike, recently being voted 'Best Family Day Out in South Wales'.

The task of maintaining the 40 acres of Monmouthshire parkland and keeping it spick and span for visitors calls for dependable machinery and when the Park needed new tractors T H WHITE Agriculture rep Joe Woolley gave them a demonstration of the New Holland T6.180. Father & son team Keith and Gareth Williams agreed the T6 was the tops and ordered two. Gareth is seen here taking delivery of the tractors from Colin Davies – together with a line-up of somewhat smaller tractors to get the youngsters thinking along the right lines!

COOLEST KID IN THE FIELD

Purchase a T5 Utility

stay cool with free Air Conditioning!

Hurry! – offer valid until 31 July
0% finance available!

T H WHITE
AGRICULTURE

Available for business users in the UK only. Terms and conditions apply – please request details

PROJECTS

BIG LIFT FOR AIR AMBULANCE



One very early, very cold morning last December, a small group of people and a large crane gathered beside a waterlogged field outside Semington.

The location was the brand new airbase operated by Wiltshire Air Ambulance, a charitable trust supported by T H WHITE. Although the exciting contemporary building was complete and being prepared for its official opening by HRH The Duchess of Cornwall, the area in front of the airbase had still to be landscaped. The first stage of that process was to be the installation of a dynamic wire-frame helicopter sculpture by Ben Lee, which was to be the future centrepiece of the airbase park.

The 6m, 250kg sculpture had to be lifted into position and secured to a steel plinth that had already been installed, and when the charity approached T H WHITE Projects director Mason Hatton, he was delighted to sponsor the lift, sending in a T H WHITE Projects crew to achieve the mission.

The facility opening, sculpture and entrance landscaping was completed with a 'Heli-Mosaic' of photographs. Airbase appeal donors and air ambulance

users were invited to share a meaningful photograph that could form part of the mosaic. These represented personal stories ranging from patients who were airlifted by WAA to those who pledged contributions to the local trust. The delay in reporting this story allowed donors and competition winners to visit the facility before the winners were publically named.

Funded by donations, Wiltshire Air Ambulance operates a helicopter which can attend an emergency anywhere in Wiltshire within 11 minutes. On average it carries out three potentially life-saving missions a day. You can find out more at www.wiltshireairambulance.co.uk.



HARVEST BREAKDOWN & SERVICE

There's enough to think about at harvest time without worrying whether your equipment is going to let you down.

T H WHITE Projects can help with regular servicing and maintenance of driers, cleaners, conveyors,

augers and elevators to ensure they are ready for the busy period. We can supply and fit parts for most makes of equipment, new or old.

If you do suffer a breakdown we can be on the spot fast to get you back in action. Just call our hotline.

Harvest emergency hotline (24/7): 07919 394602

T H WHITE PROJECTS

Nursted Road
Devizes
Wiltshire SN10 3EA
01380 723040

AGRICULTURE



FEEDING SOLUTIONS

Depending on the size of your livestock unit, feeding can call for very different approaches.

'Feedo' feeder wagons from Dutch manufacturer Schuitemaker – currently celebrating its centenary – are available in different sizes and configurations from a capacity of 8m³ right up to 37m³. All models allow discharge from the front or from the back, while the side discharge conveyor will discharge either to the left or to right. A split side discharge conveyor for simultaneously feeding from both sides is optional.

The Feedo models come standard with two or more open and aggressive silage beaters driven from the PTO which



guarantee an excellent distribution and mixture of the various types of forage without loss of structure. As the forage is only mixed during the actual feeding process, the PTO does not have to run before feeding occurs, resulting in no waiting time allied to a considerable saving on fuel over a 12-month period.

Schuitemaker Feedo trailers are available from all T H WHITE Agriculture branches – contact your rep for details.



www.thwhiteprojects.co.uk
serviceprojects@thwhite.co.uk

AGRICULTURE

MANITOU
HANDLING YOUR WORLD



LOADED!

When it comes to durable, versatile telehandlers, Manitou is hard to beat for a combination of features and capabilities at affordable prices. We have the latest machines across the range, in stock and ready to go...

ABOVE: Well-suited to cereals, livestock, mixed farming, market gardening, nurseries, poultry and equestrian tasks, the Manitou **MLT635-140 v+** is a machine of many talents. Powered by a Deutz 136hp Stage 4 engine, it is fitted with M-vario+ hydrostatic CVT transmission, load sensing piston pump, oil-over protection, road lights, front and rear work lights, flashing beacon, hydraulic locking, 48in ITA forks and carriage, a 7in vision display, heater and air suspension seat.



LIMITED STOCK

ABOVE: Perhaps the best all-rounder, the Manitou **MLT630-105 vario elite** weighs in at only 3,000kg but benefits from the power of a 136hp Deutz engine plus lifting height of 6.1m and outreach of 3.34m. Add to that m-vario+ hydrostatic transmission, cab heater, rops, fops, road and LED work lights, reverse light, flashing beacon, hydraulic locking, ANSI cab, JSM joystick, 48in ITA fixed forks carriage, radio, electric mirror, air suspension seat and 7in display and you have the perfect package.

LEFT: The Big Boy of our current stock, the Manitou **MLT741-140** is a tough contender for livestock farming and construction applications with a tall 6.9m lifting height, 3.92m outreach and a lifting capacity of 4,100kg. Everything about it is designed for comfort, performance and productivity. Features that will help you make the most of your working day include m-vario+ hydrostatic CVT transmission, load sensing pump, rops, fops, road lights, front and rear work lights, flashing beacon hydraulic locking, JSM joystick, 5 hydraulic services, 48in ITA forks and carriage, bluetooth radio, 7in vision display and an air suspension seat.

BELOW: An articulated chassis, offers superb manoeuvrability and the **MLA-T 533-145 v+** telescopic loader wraps it up with performance and profitability. Fitted with M-Vario Plus transmission, a 143 hp engine and a load sensing pump, the machine also offers easy access to the main engine components and centrally positioned greasing points, maintenance is simple, optimising the profitability of your operation.



MAKE YOUR NEXT TELEHANDLER A MANITOU! CONTACT YOUR T H WHITE AGRICULTURE BRANCH TODAY FOR A GREAT DEAL

ABOVE: The Manitou **MLT 625-75** is a remarkably compact machine well suited to restricted-space operations on smaller farms, around sheds or buildings where there is little room for manoeuvre. The comfort of the driver's cab with air conditioning and radio, full 360deg visibility and JSM (Joystick Switch & Move) controls are just some of the features that make working days safer and less exhausting. The Easy Connect System (ECS) makes swapping boom tip attachments easy, while four driven and steered wheels combined with three steering modes optimises the unit's flexibility.

LIMITED STOCK



MAKING THE CASE FOR SOME GREAT DEALS

UNTIL 31 AUGUST ONLY



CUTTING EDGE FLAIL FROM LOGIC

Logic, well known for building the toughest trailed flail mowers on the market has announced an all new model MFP flail mower, taking this popular model a step further.

Already featuring a tough cutting deck and a powerful 16hp V twin engine, the 2019 MFP now has the added advantage of a single lever to engage the drive belts. This delivers the most efficient drive to the flail rotor through a simple pulley tensioning three belts to give incredible performance.

It's available in two cutting sizes, 1.2m and 1.5m, with a choice of rough cut or fine cut flails.

If you would like to know more or arrange a demonstration, please contact T H WHITE Logic specialists Simon Knight on 07860 712963 (Marlborough), or Tim Rochfort 07973 911934 (Toddington).



0% FINANCE, DISCOUNTS AND EXTENDED WARRANTIES ON CASE IH T H WHITE PRO AGRI TRACTOR AND HARVEST EQUIPMENT

- Retail Finance available on ALL tractor models - **3+33 at 0%** and **1+2 at 0%** based on 50% of retail price.
- Additional retail discounts on Farmall, Luxxum, Maxxum, Pump and Optum/ Optum CVX ranges
- In-house extended Tractor warranty called Safeguard Warranty is now available covering the base year plus an additional **2 years or 3000 hours or 3 years** whichever comes sooner. What's more it's possible to extend the duration and hours of this package.
- Retail Finance available on combines and balers - **1+2 at 0%** based on 50% of retail price.
- In-house extended Harvester products warranty called Safeguard Warranty is now available covering base year plus an additional **2 years** for max 600 hours or **3 years** whichever comes sooner.
- Flexible retail discounts on combines, headers, large and round balers. Speak to your rep today!
- Safeguard Warranty terms apply.

AGRICULTURE

BOOK YOUR DEMO WITH OUR 2019 FLEET NOW!



Our 2019 fleet of agricultural demonstration machinery has been finalised and most of it is available for you to try right now.

We are anticipating high demand for demo sessions so be sure to book yours as soon as possible to avoid disappointment. Here's the line-up:

NEW HOLLAND

Combines: CR9.90, CR8.90.

Baler: BB1290 Square Baler.

Tractors: T7.270 with Auto Command, T7.315 HD with full guidance, T6.145, T6.180 DC, T7.225 Auto Command.

CASE IH T H WHITE PRO AGRI

Combine: Axial Flow Combine Harvester.

Tractors: Farmall 115D HiLo HD with 24x24 powershift transmission fitted with Lynx LRZ100 Loader, Puma 240CVX with front PTO and AFS guidance, Puma 165CVX with full guidance.

We also have a stock of short and

long term hire tractors available for hire during harvest, including a Puma 175XVX, Puma 200CVX and Puma 220 multicontroller.

MANITOU

Telehandlers: MLA T533, MLT 630-105 Vario, MLT 737-130.

VÄDERSTAD

Cultivator: TopDown TD400.

Drill: Rapid RDA 600S combination drill.

PÖTTINGER

Grassland: Hit 8.81 Tedder, 301 Alpha motion, 302 ED.

KUHN

Baler: VB2160 Variable Chamber Baler.

HE-VA

HE-VA trailed Subsoiler 5.3m rigid, HE-VA mounted disc Cultivator 2.75m, HE-VA Contour Disc roller 4.25m.

SKY AGRICULTURE

Sky Drill on request.

To book a demo please contact your agricultural rep.

ACCREDITED SPECIALISTS IN ENERGY, FIRE & SECURITY DESIGN, INSTALLATION, SERVICE AND MONITORING



SECURITY

T H WHITE Energy, Fire & Security is an NSI Gold-accredited Intruder and Security specialist with 26 years' experience in installing and maintaining commercial security systems. Our carefully chosen suppliers are Honeywell, Risco, Texecom, and Visonic and we supply and install panels, detectors, PIRs, key fobs, keypads, as well as a range of wireless communication warnings and controls.

FIRE SAFETY SYSTEMS

T H WHITE is an approved Gent 24 System Integrator, specialising in design, supply and installation of Gent fire systems from Honeywell. We also supply and install farm alarms and associated accessories from Advanced, Haes, Kentec, EMS, Hochiki and Apollo. We work with clients to provide single standalone alarms or fully integrated solutions, as well as secondary solutions such as fire extinguishers



EV CHARGEPOINTS

Working with leading supplier Evolt (Swarco), we offer a full range of electric vehicle charge points, from simple residential installations to fast and rapid charge points for commercial use. We are also registered to offer OLEV grant funding to homeowners and businesses for each qualifying charge point installed.

BATTERY STORAGE

Modern battery systems let you store power for when it's needed to minimise your reliance on the grid. T H WHITE has strong relationships with some of the world's biggest technology brands and is a Certified Installer for Tesla Powerwall 2. Our battery solutions can be standalone or linked to a solar installation and we analyse each application in order to specify the right technology.



Servicing and monitoring contracts available across the range Call us today for a free, no obligation survey

10% OFF YOUR FIRST SERVICE BOOKING

for any new or existing customer who takes on service and maintenance from a new department. For example, if you have an energy service contract and take out fire alarms servicing, then the discount would apply to your first booking of the new work.

T H WHITE
ENERGY, FIRE
& SECURITY

01380 726656
efs.thwhite.co.uk

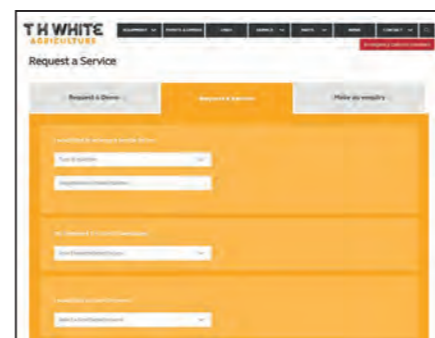
AGRICULTURE

REQUEST A SERVICE

Looking for a quick and easy way to book your machinery in for a service? Look no further!

We are pleased to launch the new 'Request a Service' function on the T H WHITE Agriculture website, enabling busy farmers to arrange a service quickly and easily from their computer, tablet or mobile phone.

No more searching for phone signal to call us, or waiting until we're open to pop in to a branch - you can notify our service managers of your requirements at any time of day.



Simply visit www.thwhiteagriculture.co.uk/contact/get-in-touch and click 'Request a Service'. Then just provide your equipment details, preferred T H WHITE branch, desired service date and your contact details, and a member of our team will contact you to confirm your booking.

AGRICULTURE

VALUE TRAILERS



When the crop has been cut it needs to be transported and Warwick offers some of the best value and high quality grain trailers on the market today.

Top choice for grain and root crops is the Warwick 14/16 tonne range which feature compensating sprung suspension, leaf sprung drawbar, a 4mm floor and 3mm sides for durability. All have LED Lights to RTA Specification and for efficient road operation the Fastmaster variant benefits from Cam Brakes operated by two line Air and Hydraulic plus ABS.

Warwick offers many trailers from small pick-ups and flatbeds to the largest road legal models, all designed for specific tasks. We can help you find exactly the one you need at the best price - contact your T H WHITE rep.



DAIRY

CALLING ALL DAIRY FARMERS!



T H WHITE is a main dealer for DeLaval and we would like our customers to benefit from all the guidance and support DeLaval offers end users of DeLaval products.

DeLaval publishes a monthly digital newsletter which shares useful articles relating to herd management, product tips, customer case studies, events, offers and more. To receive the publication please sign up by visiting www.delaval.com where you can subscribe to their newsletter at the base of the page.

MACHINERY IMPORTS

JENSEN CHIPPERS IMPRESS AT ARB SHOW

The team behind the UK distribution of Jensen woodchippers, the world's original woodchippers first developed in 1884, were delighted to host a stand at the 2019 Arb Show which was held in May at the Westonbirt arboretum.

Several thousand visitors attended the two-day event where Jensen had a prominent stand, drawing in crowds of interested people and resulting in a large number of demonstration bookings throughout the country.

Jensen is known for supplying the widest range of woodchippers in the industry, from 6" to 12" capacity; towed, PTO, tracked and hydraulically-adjustable 'Spider' tracks; as well as turntable functionality on all 8" and above machines.

A wide variety of Jensen machinery was available to see at the show, including towed and tracked machines, with both petrol and diesel models on display.

Tree surgeons and arborists looking for a powerful but lightweight all-round chipper showed great interest in the 6" capacity diesel A530L woodchipper. Weighing in at less than 750kg and road-towable, it was one of the most popular machines on the stand. Similarly, the 6" A530L, petrol version, at under 700kg fully braked, attracted much attention. Featuring a 35hp Briggs & Stratton Vanguard engine, and electronic safety touch-sensors

fitted as standard, the A530L offers power, performance and safety in a practical sized machine.

A machine that always draws a crowd is the Jensen A540 Spider. Capable of tackling timber up to 190mm effortlessly, the A540 with Spider tracks is designed for embankments and awkward terrain. Agility and stability comes from independently adjustable hydraulic tracks, both horizontally and vertically.

Bill Johnston, Head of Machinery Imports division and Business Manager for Jensen in the UK, said: "This is the third year we've attended the Arb Show with Jensen and we were delighted, not only with the attendance but also the huge level of interest in the brand.

It was excellent to meet many existing Jensen owners who were pleased to share their experience of Jensen machinery with us, as well as a host of new customers booking on-site demonstrations."

"We're looking forward to seeing lots of those visitors again over the coming weeks,

giving them the opportunity to try a Jensen for themselves and experience the power and performance of the world's original woodchippers."

If you would like your own demonstration of a Jensen woodchipper, call 07850 384530 or visit www.jensenchippers.co.uk.



Nathan Jacobs and Bill Johnston of Jensen UK.

SUMMER SEASONAL OFFERS



WAS £24.51
NOW £19.99

Swarfega JIZER 5 litre

Parts degreaser that will quickly dissolve heavy deposits of mineral oil, grease, tar, bitumen and waxes. Water rinsable, can be used for removing oil and grease marks from many floor surfaces.

SPAREX LED WORK LIGHTS

Upgrade your New Holland and Case IH Work lights from Halogen to LED! Fits a range of machines including T6000, T7000, TSA, Maxxum and Puma. Contact us for a full fitment list.



FRONT £39.99
REAR £59.99

MOISTURE METERS

Hand-held Wile moisture meters are made for reliable and precise moisture control for grain, hay and silage. Available in whole grain (Wile 65) or crushed grain (Wile 78).

WILE 65: WAS £299 £270
WILE 78: WAS £369 £310



ACTIVE CLOTHING

ACTIVE GILLET £24
Designed for outdoor activities, this gillet's smart technical features are focused on providing comfort with protection from harsh environments. Black.

WORKSHORTS £19
Robust and durable work shorts made to withstand daily use and hard work all year round. Black/Grey.



FROM T H WHITE AGRICULTURAL PARTS STORES
PRICES SHOWN EX-VAT
For current offers see: www.thwhiteagriculture.co.uk

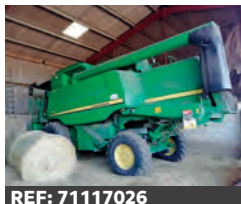
T H WHITE
AGRICULTURE

BIG NAMES IN USED EQUIPMENT



REF: 11116669

2014 New Holland CR9080 Combine Harvester, twin pitch rotors, cleaning shoe, difflock **£145,000 RD**



REF: 71117026

2012 John Deere T560 Combine, 22ft header & trailer, Zurn rape knife, 1100 hrs **£103,000 AT**



REF: 71117231

2015 New Holland BB870 PC, Crop Cutter, tandem axle, 47,000 bales **£46,000 AT**



REF: 71115929

2013 New Holland BB890 PY, Crop Cutter, single axle hydraulic brakes, 44,000 bales **£37,500 AT**



REF: 51110788

2016 New Holland T7.190, 50kph, c/w semi p/shift, joystick, very good condition **£59,000 JW**



REF: 41116117

2015 Case IH Puma 200 CVX, 50k ECO CVT, front axle & cab susp, air brakes, front linkage **£58,000 SC**



REF: 41116610

2013 Case IH Puma 185 Powershift 50kph, suspended cab & front axle, air trailer **£30,000 SC**



REF: 11112865

2015 Manitou MLT 735 120 powershift LSU, fully dealer serviced, very nice condition **£39,000 CD**



REF: 61110508

EX-DEMO - 2017 Väderstad TD400, very good condition **£52,000 CD**



REF: 61110508

2015 Väderstad CR625XL Disc Harrow, 6.25m XL carrier, excellent condition **£37,000 RL**

TRACTORS

2014 Kubota M135GX, 2 rear spools, 40kph, front suspension, 850 hrs from new **£36,000 RD**
 2014 New Holland 85, 40kph, 4wd **£19,750 BL**
 2007 Case IH JX1075C, good order **£10,000 AT**

MACHINERY

2014 New Holland FR850 Forage Harvester, 2x8 knives, crop processor, grass pickup, 2731 cutting hrs, 3649 engine hrs **£110,000 RL**

RB Ray Bennett 07710 985957
 PC Paul Churches 07702 724308
 SCT Steve Clucas-Tomlinson 07860 593339
 SC Stuart Crook 07831 249489
 AD Andy Daffurn 07860 331023
 CD Colin Davies 07860 401211

2000, New Holland FX38 Forage Harvester, crop processor **£POA AT**
 2016 EX-DISPLAY Väderstad Carrier 525XL Disc Cultivator, 5.25m width **£38,150 CO**
 2008 New Holland A440 Maize Header, 8 row small discs **£25,000 AT**
 Spearhead Excel 605 Hedge Trimmer, 1.2m head, hyd roller **£12,500 AT**
 2004 Kverneland Big Square Wrapper **£7,500 BL**
 Maschio Power Harrow, 3 meter **£4,500 AT**

RD Rhodri Davies 07775 003460
 NE Nigel Ellis 07860 247367
 WF William Farr 07495 114325
 BG Bob Gallop 07831 883734
 JH Jamie Harraway 07826 917955
 SK Simon Knight 07860 712963

TANKER

1995 1500 Slurry Tanker, good pump **£3,500 RM**

MULE/UTV

2016 Kawasaki Mule Pro DXT UTV, diesel, half cab, road legal, c.1,000 hrs **£9,200 AD**
 2017 EX-DEMO - Honda UTV 700M2, two year warranty, only 124 hrs from new, rare green panels, tow bar, digital dash with service indicator, 12v charging socket **£10,990 TR**

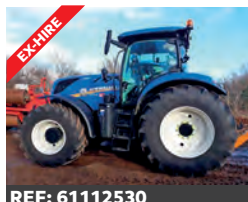
RL Ryan Lanfear 07769 248602
 BL Ben Linton 07495 114479
 CM Chris Martin 07919 044389
 TR Tim Rochfort 07973 911934
 AT Andy Taylor 07831 255811
 JW Joe Woolley 07818 077591

Sales Hotline: **01373 465941** (Mon-Fri 08.00-17.00) Out of hours: **07710 985957**

New: www.thwhiteagriculture.co.uk Used: www.thwhiteused.co.uk

In addition to our usual selection of the best used agricultural equipment on the market we also have a selection of ex-demo, ex-hire and ex-display stock offers at great prices.

Although some items may show signs of light use, they are without exception high quality machines and implements. All items will be fully checked by our technicians as well as being warranted by T H WHITE.



REF: 61112530

New Holland T7.245 AC T4B, 50 kph, eco cvt, fender PTO control, full autoguidance **£105,000**



REF: H1111046

Case 8240 combine harvester, autoguidance, hi-cap unload auger, engine compressor, luxury cab, magnacut **£POA**



REF: 41112274

Case IH Puma 200 T4B, 50kph, exhaust brake, air trailer brakes, adv hmc, 170l pump, 4 rear valves **£105,350**



REF: 41109251

2017 Case IH Farmall 105C HD Hi-Lo 24 x 24 2 speed Powershift, 40kph, HD rear axle, 3 rear remotes **£POA**



REF: H1111351

Case IH Puma 200 T4B, 50kph, exhaust brake, air trailer brakes, adv hmc, 156l pump **£92,750**



REF: 11115797

Väderstad Rapid RDA600S Combination Drill, 3 row coulters, prem markers **£82,000**



REF: 61110508

Väderstad TD400, very good condition **£52,000**



REF: 51110456

Pöttinger Torro 6010L Combiliner Loader Wagon, tandem sprung steering axle, autoutc **£69,250**



REF: 51111426

Kuhn Profile 24.2CL TMR Mixer Wagon. cross feeding, 2 vertical augers, anti overflow ring 5 point **£39,950**



REF: 51111426

Pöttinger Lion 600 folding Power Harrow, 6m working width for tractors up to 270HP **£25,000**

All items offered are subject to remaining unsold. Prices shown do not include VAT.

BRANCHES: DEVIZES: 01380 722381 FROME: 01373 465941 HUNTLEY: 01452 830303 KNOCKDOWN: 01454 238181
 HEREFORD: 01432 352333 MARLBOROUGH: 01672 512328 TODDINGTON: 01242 620211 STOCKBRIDGE: 01264 811260

