

PROJECTS



Reliable slurry pumping



Preparation leads to a good grass harvest



HURRY- 0% finance on ALL Honda ATVs!

PLUS Agricultural clearance stock bargains!

AGRICULTURE

PROJECTS

GROUND CARE

DAIRY

COUNTRY STORE

TRAILER CENTRE

LORRY CRANES

CONSTRUCTION

ENERGY, FIRE & SECURITY

ONLINE STORE

MACHINERY IMPORTS



A 39-YEAR WORKING RELATIONSHIP

Rob Sanderson's 39-year career in the grain handling and storage business has coincided almost exactly with the rise to prominence of large co-operative grain stores in the UK. During that time Rob has been the man behind some of the largest grain store developments across the country, including in Scotland, and he puts much of his success down to a long term working relationship with the team at T H WHITE Projects.

We caught up with Rob at the Shrewton grain store of Trinity Grain on the edge of Salisbury Plain. The expansion of this store from its original capacity of 30,000 tonnes to 100,000 tonnes in the 1990s was Rob's first big project, but Hampshire Grain was where he started back in 1980 – which merged with Wiltshire Grain and Ridgeway Grain to form Trinity Grain in 2018.

"In those early days the development of large, co-operative grain stores were supported by European investment grants," said Rob.

"Yields were increasing and farmers faced the choice of making a considerable investment in their own grain store as well as finding markets for their grain, or becoming part of a joint enterprise using centralised storage and distribution points, thus streamlining their operation and guaranteeing a market."

When Rob arrived

at Hampshire Grain it was only a year since the grain store had been built by the newly-established T H WHITE Projects (then called T H WHITE Installation Ltd), but the concept was beginning to take off and the first big extension, again with T H WHITE, was made in 1982.

"It was great to work with the T H WHITE team and it gave me a clear insight on how large infrastructure projects should be handled. These days such projects are generally very tender-orientated, but back then we relied on a relationship of confidence and trust. I can remember spending hours with Ken Spreadbury from T H WHITE, going through the initial ideas and drawings, tweaking, refining and bringing ideas to life. Both sides of the venture shared the risk of investing a lot of time up-front, making proposals to Boards, lawyers and steering the project through the planning process. The commitment was joint and if it didn't go

ahead for any reason everybody lost out which created a strong team spirit."

The knowledge gained in that early work gave Rob the confidence to take the lead on many subsequent projects, including a major grain store for Camgrain at Kettering. "That presented real challenges in terms of its sheer scale and complexity of planning,"



Trinity Grain's 100,000 tonne grain store at Shrewton – the original 30,000 tonne facility in the foreground with the extension beyond.

Continued on page 3 >

News and information from
the T H WHITE Group

T H WHITE
GROUP

GROUP

WHITE'S WORLD

White's World is published monthly by T H WHITE. To contact our Divisions, call:

Agriculture Knockdown	01454 238181
Marlborough	01672 512328
Frome	01373 465941
Huntley	01452 830303
Hereford	01432 352333
Toddington	01242 620211
Devizes	01380 722381
Stockbridge	01264 811260

Projects 01380 723040

Groundcare Knockdown	01454 238181
Reading	0118 976 0088
Redditch	01527 597770
Stockbridge	01264 811260

Dairy Frome	01373 465941
Huntley	01452 830303

Country Marlborough	01672 518408
Store Knockdown	01454 238181

Trailer Centre 0118 976 0088

Lorry Cranes 01380 722381

Construction 01672 512328

Energy, Fire & Security 01380 726656

Online Store www.thwhitestore.co.uk

Machinery Imports 01264 811260

www.thwhite.co.uk info@thwhite.co.uk
 © T H WHITE Group 2019 E&OE
 Nursteed Road, Devizes, Wilts SN10 3EA
01380 722381

To unsubscribe from T H WHITE Group marketing, please visit www.thwhite.co.uk/unsubscribe

WHITE'S WORLD ONLINE

WHITE'S WORLD is also available in digital form where stories can easily be reviewed by division. In the digital edition we include stories that may be received too late for print.

To sign up for digital updates visit www.thwhite.co.uk/signup. We will then send you a monthly email with links to all the top stories and offers. As always, you will have the option to unsubscribe at any time.

GROUND CARE

FAREWELL TIM, WELCOME ROB

Rob Iddeson, Case IH dealer principal for T H WHITE Pro Agri, has assumed an additional new role as head of T H WHITE Groundcare, managing the business's four Groundcare branches.

The opportunity arose due to the departure of director Tim Lane, who has left the T H WHITE Group for pastures new.

Rob joined T H WHITE last year having been business development manager at Claydon Drills. He started his career as a farm and estates manager and was later appointed a director at Claas retail dealing with that company's complete range of machinery.

"Groundcare is a core business for T H WHITE," said Rob, "and taking responsibility for it is both a privilege and a challenge. I am confident that my strong background in machinery

will enable me to take the strategic view that will be necessary to build the business. The key to T H WHITE's success has always been to deliver the right machine to each customer, regardless of the size and scope of their operation, and then support it with exceptional after sales and service. We will continue to serve our broad portfolio of customers, while seeking out and developing new opportunities."

Rob will continue his role as Case IH dealer principal.



MACHINERY IMPORTS

BILL JOHNSTON TO HEAD MACHINERY IMPORTS

Bill Johnston, who joined T H WHITE in 2015 as a woodchipper specialist and since early 2017 has been responsible for Jensen UK, has now been appointed head of Machinery Imports.

Bill will manage the Machinery Imports team of area sales managers who support all the UK Ferris, Wright, Spider and Jensen dealers, as well as remaining the primary point of contact for Jensen woodchipper enquiries.

Machinery Imports was established in 2016 and has developed a network of 28

dealers nationwide, several with multiple sites, but Bill has already identified further opportunities. "All four of our brands will benefit from a new technical and sales training and sales programme starting this year. We have plans in place to continue increasing brand awareness

across the board and the business is forecast to grow market share as a result," said Bill.

"Particular focus will be given to our parts department where our sales and expertise grow year on year. With additional investment we aim to create an enviable and highly efficient after-sales function."



Bill Johnston (right) with T H WHITE Machinery Imports general manager Clive Carter.

A 39-YEAR WORKING RELATIONSHIP Continued from front page



An on-site gathering as the extension of the Shrewton grain store starts to take shape ready for the 1996 harvest. On the left is Rob Sanderson with Wiltshire Grain chairman Roger Moore, the late Peter Webb of T H WHITE and grain store manager Nick Brown.

Rob recalls. Other challenges also awaited, including two large projects in Scotland – one for Angus Cereals at Montrose where a port facility was developed on bare quayside land, as well as the enlargement and enhancement of ageing 20,000 tonne store for Aberdeen Grain where the capacity was expanded to 65,000 tonnes. All these schemes were carried out in tandem with T H WHITE Projects, making it one of Britain's leading installers of this type of infrastructure.

In recent years Rob has worked with Openfield, which grew out of the Grainfarmers and Centaur Grain farmer-owned co-operatives, and which now handles and markets around 20% of the UK crop to major food manufacturers such as Warburtons.

With some of the UK's biggest grain stores on his CV, his twitter profile is not exaggerating in describing him as 'GrainStorageRob'. At the beginning of this year he 'retired', but still retains an involvement with the industry through his own consultancy, Prograin.

Walking around the Shrewton site

with Rob brings home just how much volume is represented by a 100,000 tonne store – it's hugely impressive – and that's just one of many. But what does the future hold?

"The number of large grain stores now available to farmers probably means there are unlikely to be more truly large scale developments," says Rob, "but that doesn't mean things will stand still. Improvements in engineering and technology, plus the need for renewals will mean that customers will always need to call upon T H WHITE's expertise." Certainly the experience gained by T H WHITE while working on large agricultural co-operative stores is now being carried over to many diverse projects in other industries.

T H WHITE Projects is ready to help with whatever type of project you are contemplating, just as we have been able to work so successfully with Rob Sanderson over the years. Just call us on 01380 723040 to find out more about how we can assist you in making the most of your projects for generations to come.

AGRICULTURE

0% FINANCE OVER TWO YEARS ON ALL HONDA ATVS



0%
Finance on all Honda ATVs until 30.4.19

Customers who purchase any Honda ATV from T H WHITE before 30 April 2019 can opt to use 0% finance over a two year period*.

As a bonus, the promotion includes a free Datatool tracking device fitted at no cost*. To qualify for 0% finance there is a minimum deposit of 20% of the purchase price. Payment can either be made in 24 equal payments, or by 24 payments plus a final 'balloon' payment, meaning that a Honda ATV can be yours for a lot less than you probably thought.

For more information please contact Simon Knight on 07860 712963 or Tim Rochfort on 07973 911934.

* Terms and conditions apply, subject to status. Datatool tracker is supplied and fitted free of charge, annual Datatool subscription chargeable at £9.99 per month.

HAY & FORAGE DEALER OF THE YEAR

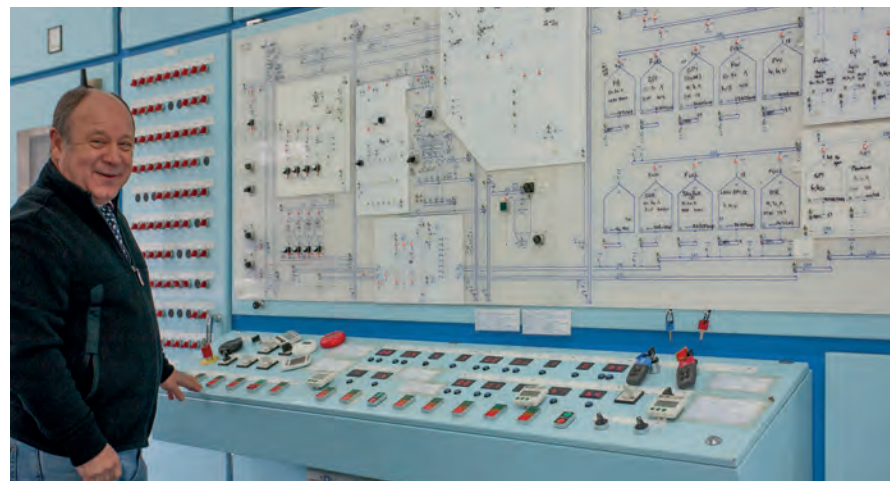


Adrian Lovegrove, Ray Bennett, Dave Sobey and Alex Scott with the New Holland award.

T H WHITE Agriculture has been named 'New Holland Hay and Forage Dealer of the Year', reflecting strong success in forage harvester and baler sales.

The prestigious award was announced at a meeting of New Holland's UK dealers at Chateau Impney in Worcestershire on 23 January.

Commenting on the award, New Holland Business Director UK and ROI, Pat Smith, said "I am thrilled to be making this award to T H WHITE. It really is a well-deserved recognition of top performance and delivery of New Holland targets."



Rob Sanderson demonstrates the impressive main control panel at Shrewton which was installed as part of the store's massive expansion programme. Today this panel would be replaced by a laptop, such is the march of technology!

PRE-HARVEST CHECK AND INSPECTION

T H WHITE PROJECTS

MATERIALS PROCESSING, DRYING, BULK STORAGE
AFTERMARKET CUSTOMER SERVICE AND SUPPORT

Contact us now on 01380 723040 and ask for Kevin Alnwick or send a mail to cssprojects@thwhite.co.uk

It's that time again to plan, think ahead and make sure everything is in good working order and ready for the forthcoming harvest.

Health Check	Detailed Report	Free Advice
Free Estimates	Spare Parts Sourcing	Fabrications
Service & Repair	Competitive Rates	Safety Awareness

GRAIN STORE EMERGENCY OUT OF HOURS HOTLINE: 07919 394602

CALL US NOW AND BE PREPARED

ACCREDITED SPECIALISTS IN ENERGY, FIRE & SECURITY DESIGN, INSTALLATION, SERVICE AND MONITORING



SECURITY

T H WHITE Energy, Fire & Security is an NSI Gold-accredited Intruder and Security specialist with 26 years' experience in installing and maintaining commercial security systems. Our carefully chosen suppliers are **Honeywell, Risco, Texecom,** and **Visonic** and we supply and install panels, detectors, PIRs, key fobs, keypads, as well as a range of wireless communication warnings and controls.

FIRE SAFETY SYSTEMS

T H WHITE is an approved **Gent 24 System Integrator**, specialising in design, supply and installation of Gent fire systems from **Honeywell**. We also supply and install farm alarms and associated accessories from **Advanced, Haes, Kentec, EMS, Hochiki** and **Apollo**. We work with clients to provide single standalone alarms or fully integrated solutions, as well as secondary solutions such as fire extinguishers



EV CHARGEPOINTS

Working with leading supplier **EvoIt (Swarco)**, we offer a full range of electric vehicle charge points, from simple residential installations to fast and rapid charge points for commercial use. We are also registered to offer OLEV grant funding to homeowners and businesses for each qualifying charge point installed.

SOLAR ENERGY & STORAGE

We have a strong pedigree in Solar PV having installed over 300 commercial schemes totalling 18 Mega Watts from commercial rooftop solar systems and small solar parks. We choose to install **Hanwha Q Cells** well as market leading **SMA, Fronius** and **SolarEdge** inverters. For energy storage we are now installing the Powerwall 2 battery from **Tesla**.



Servicing and monitoring contracts available across the range
Call us today for a free, no obligation survey

10% OFF YOUR FIRST SERVICE BOOKING

for any new or existing customer who takes on service and maintenance from a new department. For example, if you have an energy service contract and take out fire alarms servicing, then the discount would apply to your first booking of the new work.

T H WHITE
ENERGY, FIRE & SECURITY

01380 726656
efs.thwhite.co.uk

ENERGY, FIRE & SECURITY PROFIT BEYOND FIT

After eight years, of one of the most successful subsidy schemes in history, the Feed-In-Tariff (FIT), comes to an end on 31 March 2019 – but what does this mean for businesses who still wish to invest in solar energy in the future?

The truth is that the future is still very bright for solar for commercial systems. Over the last few years we have become used to drops in FIT support and the scheme itself was only designed to kick start new forms of energy as opposed to support them permanently. The reason for our optimism comes from a number of things:

- Falling panel prices have been a major factor, driven by massive global demand which has helped the manufacturers refine their production to make panels more efficiently.
- Proven success of existing installations, some nearing 10 years old, has given people confidence in the technology.
- Climate change is rising on the agenda for many businesses as they seek ways to adapt and decarbonise.
- The economics work without a subsidy, and in some instances this has been the case for some time. If you use more than 80% of your power on site you are likely to achieve a double digit return on a solar investment.

We are receiving a significant level of interest in commercial Solar PV installations for delivery post March 2019 which is driven by all these factors. There are many companies seeking to buy power from generators, so even if you were to export some of your load there is a market for the power. We also have community funders seeking projects in which to invest, in effect giving businesses owners free solar systems on their buildings in exchange for guaranteed cheaper electricity.

Please contact us for more information via our website, efs.thwhite.co.uk

AGRICULTURE

PREPARATION IS EVERYTHING FOR A GOOD GRASS HARVEST

Good preparation is a key factor in ensuring a successful grass harvest and work is now well under way.

Many farms suffer from poor quality swards and limited yields even if they plough and re-seed regularly. Often this is caused by soil becoming compacted which limits water flow through the soil and reduces air interchange. Reasons for compaction can vary from gradual soil slump to the impact of heavy machinery. Over the years silaging and slurry spreading equipment has become larger and heavier, often causing deep compaction, while shallow compaction can be caused simply by the weight of animals on the soil.

This is where the **Opico Sward Lifter Grassland Subsoiler** can make a real difference, being specifically designed to break up hard pans and surface compaction while lifting and opening up the subsoil creating improved drainage. The Sward Lifter features a cutting disc at the front to open up the turf, allowing the subsoil leg to travel through the sward without soil bursting onto the surface. Each of the Grassland Subsoiler's legs are fitted with shear-bolt or hydraulic reset to prevent damage. Spring loaded rollers are then employed at the rear of the unit to press the turf closed, leaving a surface that is level and ready for use.

Aeration is just as important as good drainage, The **Opico Grassland Sward Slitter** improves aeration of plant roots in the upper soil surface which stimulates grass and clover growth. Aeration of the sward root zone is critical for a healthy ley. Slitting allows oxygen interchange through the soil surface and also encourages evaporation of moisture in the surface layer of soil so that it dries out more quickly to promote earlier growth in the Spring.

Although slitting or spiking of grassland is not new, OPICO has taken a



Opico Sward Lifter
Grassland Subsoiler

fresh look at the design of the Grassland Sward Slitter's blades and incorporated a chamfered trailing edge. This limits the turf damage when each knife comes out of the soil, leaving a better finish.

For help on preparing for improved grass yields contact any of T H WHITE's Agricultural branches listed on page 2 where our specialists are ready to give impartial advice.

RELIABLE SLURRY PUMPING



BAUER
FOR A GREEN WORLD.

Research has shown that spring application of slurry is far more beneficial to grass than summer spreading, so with the season now upon us the one thing you definitely need is a reliable slurry pump.

The Austrian-built Bauer Magnum SX is a tough, no-nonsense unit with a 140m head and a capacity of up to 300m³ per hour. Its high cutting and chopping performance is exactly what is needed when lifting slurry from a lagoon as it will cope with up to 12% solids and is largely insensitive to solid particles.

As well as a long service life, you can expect this pump to deliver low operating costs with easy maintenance. The cutting blades are easily adjustable to maintain the ideal cutting gap while

the impeller is a high grade casting of an open design well suited to liquids containing straw or grass. The flange ensures enormous suction capacity and the shafts are sealed with a double-acting mechanical seal with an oil reservoir.

Three drive options are available with couplings for a tractor PTO, a stand-alone diesel engine or electric motors, and there are five mounting variants – a pump trolley, a hoisting frame for three-point linkage, a trailer with Diesel engine, a mobile unit with Diesel engine, as well as a base plate with electric drive motor.

Our slurry specialist Bob Gallop can explain all the options to ensure you get the configuration that's right for your needs. Call him on 07831 883734 or email rg@thwhite.co.uk.

TOTAL CROP PACKAGE SOLUTION



Quality product • Price-competitive • Interest-free plan
CONTACT YOUR AGRICULTURAL PARTS DEPARTMENT

T H WHITE
AGRICULTURE



ARE YOU TALKING TO US?



Opico Grassland
Sward Slitter

BIG NAMES IN USED EQUIPMENT



www.thwhiteused.co.uk



2014 New Holland CR9080 Combine, twin pitch rotors self-levelling cleaning shoe, yield monitor **£159,000 RD**



2011 New Holland FR9050 Forage Harvester, hours: engine 2134, chopping 1582 **£83,000 RM**



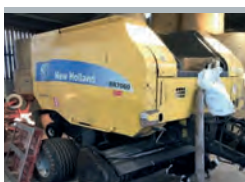
2008 New Holland A440 Maize Header, 8 row small discs **£25,000 RM**



2005, New Holland BB940 Baler, single axle hyd brakes, 92,000 bales **£15,000 AT**



2011, New Holland BR7060, super feed, good order, very nice condition, 20,000 bales **£10,500 AD**



New Holland BR7060 variable chamber crop cutter round baler, 480/45-17 tyres **£8,000 RM**



2017 New Holland T7.210, 50kph, full p/shift, fender linkage & PRO controls, cab suspension **£67,000 JW**



2016, New Holland T7.190, 50kph, c/w semi p/shift, joystick, very good condition **£59,000 JW**



2015 New Holland T7.210 Power Command, 50kph, front linkage, auto steer ready, 3,200 hrs **£53,900 PC**



2015 New Holland T6.160, 50kph, 4 cylinder, excellent condition **£53,000 RL**



2016 Case IH Optum 300, front linkage, 5-electric remotes, hyd top link, full guidance **£98,000 SC**



2017 Case IH Puma 150, 50kph, 19 x 6 semi p/shift, front linkage, dual motion air seat **£68,000 SC**



2017 Case IH Farmall C, 24 x 24 hi/lo gearbox, 40kph, LRZ 100 Loader, 2 rear remotes **£41,500 CM**



2018, Manitou MLT741, vario transmission, 7m reach, 4.1 tonne lift capacity, 260 hrs, excellent **£66,000 JW**



2013 Manitou MLT735, excellent condition **£36,000 AT**



EX-DEMO 2018 Väderstad Rapid RDA600S Combi Drill, 3 rows of coulters, interactive depth control **£82,000 RD**



2015 Väderstad CR625XL Disc Harrow, 6.25m XL carrier, excellent condition **£37,000 RL**



2017 HiSpec 3500 gallon TD-S Slurry Tanker, topfill, internal agitator, hyd drive pump **£36,750 BG**



EX-DISPLAY 2017 Warwick WB14FM 14T Fastmaster Grain trailer, 4mm floor, 3mm sides **£18,415 CD**



Spearhead Excel 605 Hedge Trimmer, good working order, 1.2m head, hyd roller **£12,500 RM**

TRACTORS

2014 New Holland T7.270 Terraglide II with brakes, 3600 hrs, excellent **£65,000 AT**
 2017 New Holland T7.190, semi p/shift, 50kph, cab suspension, LH & RH beacons, 1 2 led cab lights, Michelin tyres **£59,000 RD**
 2011 New Holland T7.270 auto command, comfort seat, front linkage, **£46,500 AT**

MACHINERY

2013 Manitou MLT735, CRC Perkins Turbo engine, 5 speed powershift, work lights, 2 rear autoclean system **£26,500 PC**
 1995 New Holland FX300 Forage Harvester, in working order, sold as seen **£18,000 RM**

2002 New Holland RI600Y Maize Header to fit 4wd self-propelled **£14,000 AT**
 2005 New Holland BB940 Big Baler **£15,000 AT**
 2012 Claas Tedder, 7.7m working width, serviced and ready to go **£POA AW**
 2008 Krone Rake, good condition **£8,000 RM**
 2013 Teagle Tomahawk 8100 **£7,400 RM**
 2012 Kuhn FC283 Mower **£5,600 RM**
 Kuhn HR3003 Power Harrow **£4,000 RM**
 2008 Krone Tedder **£4,000 RM**
 2002 John Deere 228A Mower **£3,500 SC**
 2002 John Deere 1365 Mower **£POA SC**
 1992, Kuhn Plough **£2,850 AW**
 EX-DEMO - Robomow RS630 mower, base station, wire & pegs, mower will come with all accessories to self-install **£1,800 SK**

TANKERS

2007 Marshall 2400 Slurry tanker **£4,950 BG**
 1500 Slurry Tanker, good pump **£3,500 RM**

MULE/UTV

2017 Polaris Ranger Diesel UTV **£8,800 SK**
 EX-DEMO - 2017 Honda auto UTV 700M2, 66 hours and 260 kms, 2 yr warranty 2/4wd and diflock, tipping rear back, 680kg towing capacity, 386 load capacity **£8,495 TR**
 2009 Kawasaki Mule **£4,500 RM**

TRAILER

Marshall 11 tonne Silage Trailer **£5,500 PC**

RB Ray Bennett 07710 985957
 PC Paul Churches 07702 724308
 SCT Steve Clucas-Tomlinson 07860 593339
 SC Stuart Crook 07831 249489
 AD Andy Daffurn 07860 331023
 CD Colin Davis 07860 401211
 RD Rhodri Davies 07775 003460

NE Nigel Ellis 07860 247367
 WF William Farr 07495 114325
 BG Bob Gallop 07831 883734
 JH Jamie Harraway 07826 917955
 SK Simon Knight 07860 712963
 RL Ryan Lanfear 07769 248602
 BL Ben Linton 07495 114479

CM Chris Martin 07919 044389
 RM Richard Morgan 07831 351379
 TR Tim Rochfort 07973 911934
 AT Andy Taylor 07831 255811
 AW Adrian Weaver 07850 301575
 JW Joe Woolley 07818 077591

HIGH QUALITY CLEARANCE BARGAINS

On the opposite page is our usual monthly selection of some of the best used agricultural equipment on the market. But on this page we present a selection of clearance items at bargain prices.

This selection of products may be ex-display, ex-demonstrators, or simply items that we have had in

store for a longer period. As a result, some items may exhibit storage soiling or show signs of light use, but without exception they are high quality machines and implements.

All items will be fully checked by our technicians as well as being warranted by T H WHITE.



REF: H1111046
 Case IH 8240 combine harvester - autoguidance, hi-cap unload auger, engine compressor **£POA**



REF: 61112327
 New Holland CX7.80 combine - chop & chaff, yield monitor, autoguidance, 22ft varifeed header **£183,000**



REF: 51111426
 Kuhn Profile 24.2CL TMR mixer wagon - cross feeding, 2 vertical augers, 6 auger knives **£40,820**



REF: 51110456
 Pöttinger Torro 6010I Combiliner Loader Wagon - tandem sprung steering axle, 45 knives **£69,250**



REF: 71111582
 New Holland FR650 T4B - 4wd diff lock, 40kph, engine compressor, autofloat, climate control **£205,000**



REF: 51111457
 New Holland T7.270 AC T4B - 50kph eco cvt, class 4R axle, cab suspension, climate control **£114,000**



REF: H1107527
 Case IH Optum 300 - 50kph cvt, air brakes, front linkage & PTO, AFS 700 screen, full guidance **£128,250**



REF: 41112274
 Case IH Puma 200 T4B - 50kph, exhaust brake, air trailer brakes, f/linkage, auto aircon **£105,350**



REF: 61112530
 NH T7.245 AC T4B - 50kph, eco cvt, hydr single, full autoguidance, joystick, aircon **£105,000**



REF: 71109057
 NH T7.245 AC - 50kph, front linkage Michelin tyres 540/65R30 fixed, 650/65R42 fixed, 211 hrs **£POA**



REF: H1111351
 Case IH Puma 200 T4B, 50kph - exhaust brake, air trailer brakes, adv hmc, f/linkage, auto aircon **£92,750**



REF: 11112607
 New Holland T7.210 T4B - 50kph, full powershift, hyd & pneu track brakes, air con, cab suspension **£75,000**



REF: 61113667
 New Holland T6.175 T4B - 50kph, 24 x 24 trans, class 3 susp 4wd with brks & terralock, aircon **£68,500**



REF: 61112450
 New Holland T7.210 T4B - 50kph, full powershift, hyd & pneu track brakes, aircon, cab suspension **£77,000**



REF: H1112435
 Case IH Maxxum 145, 50kph - 540/540E/1000 PTO, front linkage, 90mm lift ram, susp f/ axle with brakes **£69,650**



REF: 71107377
 Manitou MLT741-140 - Deutz stage 4 engine, m-varioplus transmission, hyd locking, jsm joy stick **£POA**



REF: 71110063
 Manitou MLT733-105 LSU Premium - Deutz engine, 7m reach, 3.3t lift capacity **£56,500**



REF: 61112294
 Manitou MLT630-105 Vario Elite - Deutz stage 4 engine, 105hp, vario hydro trans, 40kph, heater, **£55,500**



REF: 61110508
 Väderstad Top Down 400 multipurpose cultivator **£52,000**



REF: 61113887
 Manitou MLT 625-75H Elite - Kubota engine, 42" fixed forks & carriage, 5 hyd services **£49,800**



REF: 41106831
 Case IH Luxum 120 - 32 x 32 powershift, 40kph, push back hitch, cab susp, air seat, front weight carrier **£45,270**



REF: 61110514
 Väderstad CR650 Carrier TopDown 400 - crossboard, system disc **£44,000**



REF: 61110509
 Väderstad CR650C Cultivator - system disc aggressive, steel runner **£POA**



REF: 61108095
 Ex-hire Manitou MLT625-75H Elite - Kubota engine, 75hp, 6m reach, 2.5lift capacity **£42,200**



REF: 41109251
 Case IH Farmall 105C HD - high-lo 24 x 24 speed p/ shift, 40kph, HD rear axle, 3 rear remotes, aircon **£POA**

All items offered are subject to remaining unsold. Prices shown do not include VAT.

BRANCHES: DEVIZES: 01380 722381 FROME: 01373 465941 HUNTLEY: 01452 830303 KNOCKDOWN: 01454 238181
 HEREFORD: 01432 352333 MARLBOROUGH: 01672 512328 TODDINGTON: 01242 620211 STOCKBRIDGE: 01264 811260



COUNTRY STORE

GOODNATURE: HUMANE CONTROL FOR GREY SQUIRRELS

For many people the grey squirrel is far from being a cute garden visitor – it often causes severe damage to woodlands by stripping bark from trees, as well as stealing the eggs of song birds. Introduced from North America in the 19th century, the grey squirrel has also almost driven the native red squirrel to extinction in many areas.

The problem has reached the point where some regard the grey squirrel as a more serious pest than rats. That said, the grey squirrel is a regular and approachable resident of our woodlands, parks and gardens, so where targeted control is needed it's important that it should be humane. Shooting or trapping grey squirrels with primitive spring traps used to be the only lawful means of control, but both methods have been criticised for being inhumane.

However, under DEFRA's newly made Spring Traps Approval Orders, the long-awaited Goodnature A18 Grey Squirrel Trap became an approved trap in England and Scotland from 1 January 2019, and is now available from the T H WHITE Country Stores.

Unlike other traps, the Goodnature A18 is powered not by springs but by the force of compressed gas from a small screw-in cartridge. It is designed to be



mounted at head-height on a tree; when a squirrel tries to reach bait inside the trap's tough plastic housing it pushes aside a fine wire which triggers a gas-powered captive piston. The powerful strike to the back of the animal's head results in near-instantaneous death and the piston then retracts, allowing the dead animal to drop to the ground where, in most cases, it will be quickly removed by scavengers.

The principle of the trap is closely related to the Goodnature A24 rat trap profiled in White's World 281 (December 2017) and is the latest result of the pioneering work done by the New Zealand company in developing genuinely humane, non-toxic traps for pest control.

A major benefit comes from the fact that the trap is self-clearing and self-resetting, meaning that it requires less human attention. Each gas cartridge is capable of delivering 18 strikes which in most situations will be sufficient for about six months. A strike counter attachment comes with the trap so that the user will immediately know how often it has been operated.

The Goodnature A18 is available from our Marlborough and Knockdown Country Stores at £159.90 including VAT. Replenishment packs of lure paste and gas cartridge are available too.



MORE MOWER FOR YOUR MONEY

SAVINGS ACROSS SELECTED HONDA LAWNMOWER RANGES



With fantastic offers across our lawnmower ranges, there's never been a better time to buy a Honda. With so many to choose from, you'll be sure to find the perfect model for you. So take a look at the offers below and see what takes your fancy.



Ride-on mowers
£400 OFF



Izy mowers
£100 OFF



Core mowers
£100 OFF

Domestic use only. 1. This promotion is open to all residents of the UK mainland aged 18 or over. 2. The promotion allows qualifying customers to obtain a saving on new purchases of certain Honda Lawn & Garden products ('Eligible Models') made between Friday 1 March 2019 and Wednesday 31 July 2019 inclusive. 3. The Eligible Models for which this promotion applies are i) Izy lawnmowers, ii) Mimo robotic lawnmowers and iv) Ride-On mowers. 4. The saving amount will be applied at the point of purchase and deducted from the purchase price. No cash alternative arrangement shall be entered into. 5. Multiple purchases are permitted. 6. In-store purchases must be made within the dealer trading hours. 7. All items subject to availability. 8. The promoter is Honda Motor Europe Limited trading as Honda UK of Cain Road, Bracknell RG12 1HL. 9. Further details can be found on the Promoter's website: www.honda.co.uk/mowers

T H WHITE
COUNTRY STORE

T H WHITE COUNTRY STORE, 47 LONDON ROAD, MARLBOROUGH SN8 2RN

www.thwhitecountrystore.co.uk