



New separator helps organic cycle



Enter our Harvest Photo Competition



Better sowing in wetter, shallow soil

PLUS extensive choice of quality used equipment and machinery...

- AGRICULTURE
- PROJECTS
- GROUND CARE
- DAIRY
- COUNTRY STORE
- TRAILER CENTRE
- LORRY CRANES
- CONSTRUCTION
- ENERGY, FIRE & SECURITY
- ONLINE STORE
- MACHINERY IMPORTS

LORRY CRANES

PALFINGER UK

PART OF T H WHITE GROUP



PALFINGER UK HELPS AET REACH NEW HEIGHTS WITH MERCEDES-BENZ

One of the biggest cranes currently fitted at the back end of a UK-registered 32-tonne chassis has just been delivered to new owner AET Transport Services.

The brand-new Mercedes-Benz Arocs 3248LK ENA eight-wheeler is one of a fleet of 66 vehicles for the Poole-based AET Group, which comprises AET Andover, Curvin Transport, Dorset Crane Hire and Eaton Transport divisions.

Since its delivery, the new Arocs truck has been assigned to the AET factory relocations team who move machinery, plant and other large consignments across the UK and Europe for customers including Airbus, Rolls-Royce, Britax and Sunseeker.

Palfinger UK played a significant role in AET's new purchase, building the truck's platform body and installing the rear-mounted Palfinger PK 65002D SH crane, which has five hydraulic extensions. AET Group Managing Director Andrew Trotter explained: "A rear-mounted

crane will always be more appropriate for some jobs, as it allows us to back into the premises and reach further.

"The truck's rear-steer axle also gives us an excellent turning circle, which is a major advantage on difficult-to-access sites. We talked to another manufacturer who offers a chassis in the same configuration, but came down in favour of the Mercedes-Benz, not least because its axle loadings were better suited to the crane."

The aim of the Palfinger UK team, alongside Mercedes-Benz Product Manager Ian Knight and Truck Sales Executive Steve Trevett from south coast dealer Marshall Truck & Van, was to shed as much weight as possible without compromising stability and rigidity. As a result, the low-height sub-frame was

fabricated from a special high-grade folded steel plate which is stronger but lighter than a standard, off-the-shelf product.

The team is delighted that having made a commitment to finish a truck with a maximum payload of 9.5 tonnes, the

Continued on P.2 >>



News and information from the T H WHITE Group

T H WHITE GROUP

GROUP
WHITE'S WORLD
 White's World is published monthly by T H WHITE. To contact our Divisions, call:

Agriculture Knockdown	01454 238181
Marlborough	01672 512328
Frome	01373 465941
Huntley	01452 830303
Toddington	01242 620211
Devizes	01380 722381
Stockbridge	01264 811260
Projects	01380 723040
Groundcare Knockdown	01454 238181
Reading	0118 976 0088
Redditch	01527 597770
Stockbridge	01264 811260
Dairy	Frome 01373 465941
	Huntley 01452 830303
Country Store	Marlborough 01672 518408
	Knockdown 01454 238181
Trailer Centre	0118 976 0088
Lorry Cranes	01380 722381
Construction	01672 512328
Energy, Fire & Security	01380 726656
Online Store	www.thwhitestore.co.uk
Machinery Imports	01264 811260

www.thwhite.co.uk
head_office@thwhite.co.uk
 © T H WHITE Group 2018 E&OE
 Nursteed Road Devizes Wiltshire SN10 3EA
01380 722381

STRONG PALFINGER ADDITION Continued from front page



finished product is in fact capable of carrying 10 tonnes, all due to expert design and engineering processes from the Palfinger UK's Technical and Production teams.

"I'm very pleased with that figure, as the extra half-tonne gives us a lot more flexibility," confirmed Andrew Trotter. "An eight-wheeler which can lift 10 tonnes from the back end and then carry all of that weight is going to be a very productive addition to the fleet."

Mark Cotton, Area Sales Manager for Palfinger UK, is also pleased that the outcome has delivered even more than his customer had hoped: "I've known Andrew for almost 15 years through my time in the industry and it is a pleasure working with him, especially when the result is such a successful build. I am looking forward to seeing the new truck out on the road around the South West and working with Andrew again on future projects."



Left to right: Mercedes-Benz Trucks Product Manager Ian Knight, Palfinger UK South West Area Sales Manager Mark Cotton, AET Group Managing Director Andrew Trotter, Marshall Truck & Van Truck Sales Executive Steve Trevett.



Celebrate a challenging harvest with us by entering our Harvest Photography Competition! Post your picture on our Facebook page (www.facebook.com/THWAgiculture) with an accompanying comment if you wish, and we'll pick a winner at the end of the season. Here's one already posted by Michael Szollosi - the standard will be high so good luck!

HARVEST BREAKDOWN & SERVICE

There's enough to think about at harvest time without worrying whether your equipment is going to let you down.

T H WHITE Projects can help with regular servicing and maintenance of driers, cleaners, conveyors,

Harvest emergency hotline (24/7): 07919 394602

T H WHITE PROJECTS

augers and elevators to ensure they are ready for the busy period. We can supply and fit parts for most makes of equipment, new or old.

If you do suffer a breakdown we can be on the spot fast to get you back in action. Just call our hotline.

Nursteed Road
 Devizes
 Wiltshire SN10 3EA
01380 723040



www.thwhiteprojects.co.uk
 serviceprojects@thwhite.co.uk

AGRICULTURE

RAPID TRASH FLOW ON COTSWOLD BRASH



Stuart Bachelor

The improved residue flow from an 8m Vaderstad Rapid fitted with system aggressive discs has enabled a Cotswold Estate to sow in wetter, trashier soil conditions.



Six years ago, Ewe Pens Farm on the Bathurst Estate - operated by Cirencester Park Farms Ltd - made a policy decision to switch its machinery to a single high horsepower tractor, a big seed drill and a wider cultivator.

Farms manager Stuart Bachelor explains the reasoning: "There had been a big increase in the arable land farmed - we'd taken on another 300ha and needed the power and width of implements that would enable us to increase output, speed our work and reduce costs, as well as providing capacity for further expansion."

His ongoing challenge is to maximise output from the free-draining Cotswold brash over limestone, which can vary in depth from 15cm to 45cm on some of the 'better' ground.

Maximum yield in thin soil

"Our objective is to get as much as we can from our limited soil resources and make them more resilient to spring drought. The soil offers easy working but if we don't get rain in April and May yields can be disastrous," Stuart explains. "Due to our altitude - 750ft above sea level - we're colder and later in the spring. The thinness of the soil means that we need to achieve a well-established crop and get the roots down."

"Our target is to harvest the oilseed rape by the end of August and the wheat during the first fortnight in October; I believe in the maxim that 'a seed well sown is half grown' and it will provide competition against blackgrass and other weeds."

"We are highly aware of the need to increase organic matter and only bale straw in front of oilseed rape, the rest is chopped off the back of the combine and incorporated. And we import a lot of sewage sludge, FYM and digestate, which has also enabled us to reduce our use of triple super phosphate."

The shallow soil has also been

the primary factor behind changes in cropping. For the past four years the arable ground has been farmed in three rotations. Growing conserved fodder for a neighbouring dairy farm influences one programme, the land down to a winter wheat, maize (141ha), winter wheat, oilseed rape cycle. On the deeper brash, spring beans replace the maize, while on the thinner soils winter wheat is followed by two barley crops (either winter or spring barley), before oilseed rape.

"We grow oilseed rape one in four years as, although it has a high gross margin, I think growing it too often would only offer a short term benefit as there are the potential problems of black grass and slugs," says Stuart. "The spring crops help us to keep on top of black grass but on the worst fields we are also meeting points requirements for the basic payment scheme using fallow and trialling a two to four-year herbal ley (grasses/clovers/sainfoin)."

'Knock the slugs about'

A variety of techniques are used to prepare the land for sowing. Oilseed rape is sown direct into stubble with a Vaderstad TopDown cultivator and BioDrill combination. Winter wheat land is cultivated and, if needed to create a suitable seedbed and to 'knock slugs about', a pass is made with a 6m

Vaderstad NZA spring tine. "We try to do the majority of spring crop ploughing in September," adds Stuart. "Some over-wintered stubbles are cultivated in February/March." On the maize land FYM is ploughed in with a 6-furrow Kuhn before a pass with a 6m Vaderstad Rexius Twin and drilling by a contractor.

Until 2012 the primary workload was carried out with 300hp and 350hp tractors hired in from mid-August to mid-September so that heavy cultivation and the oilseed rape establishment could be done at the same time. The restructuring of the machinery fleet brought about by the additional land saw an end to the hiring-in policy and a 320hp tractor was purchased to do all the primary cultivations and sowing with a wider, 5m TopDown and a bigger, 8m Vaderstad Rapid fitted with System Aggressive discs.

"I'd had experience of the Rapid and I think the depth control and the layout of the working elements, two rows of cultivations discs, a levelling board and two banks of drilling coulters, maintains the seed depth better than tines which can have a lot of movement. It also produces more uniform establishment. The discs have the whole weight of the drill on top of them - we drill at 10 to 16kph, depending on the stone content."

Third bank of coulters discs

But the Rapid was not faultless. "In really wet conditions it blocked up between the two rows of coulters discs," Mr Bachelor says. "That issue was addressed at the beginning of last year when the drill was replaced with another 8m Rapid, specified with the optional tool layout of two rows of system aggressive cultivating discs and a third bank of coulters discs in place of the levelling board. It still drills at 12cm as there are the same number of discs but as they are spread out more there is greater room for trash flow."

The drill is also fitted with the E-Services system, which is used for variable rate seeding, rather than variable rate fertiliser, to compensate for variations in soil type and depth. "Courtyard Agriculture has scanned and zoned all the arable fields into different soil types and zones are sampled every three years. Wheat and barley seed rates vary between 300 - 450 seeds/m²."

Although Cirencester Park Farms Ltd has used the modified Rapid for only one autumn Mr Bachelor believes the investment has been worth it. "We drilled wheat in November with no problems and by the end of February establishment looked good," he says. At the time of writing it was too early to comment on yield but the potential is similar to the previous drill as the principle is the same, but with the flexibility to cope with wetter, trashier conditions.



Three rather than two banks of coulters discs enables the 8m Vaderstad Rapid to cope with more trash in wetter soils

KEEPING YOU SAFE & SECURE

Access Control systems

From simple pinpad and swipe units to fingerprint biometric entry modules we can control access to any size of property, including those with restricted areas or secure rooms.



Intruder Alarms

From bells only to fully policed, monitored systems. We can install the right system tailored to you or your insurance company's requirements. Already have a system? T H WHITE can carry out your annual tests, with a friendly face and a service you can trust.



Fire Alarms

Business owner? Landlord? Health and safety manager? Our surveyors are fully accredited in system design and can work with you on any project to make sure you comply with the latest regulations.



Fire Extinguishers

We supply and maintain fire fighting equipment, and offer advice to keep you safe and compliant with the latest regulations. We also offer safety signage and accessories such as cabinets, vehicle boxes and escape ladders.



CCTV & IP Cameras

For security, health and safety or machinery monitoring, we have the system for you. From fully HD conversions of existing systems to IP set ups we can future proof your CCTV installation. Coupled with our smart phone technologies you can monitor your system from anywhere in the world.



Electric Gates & Barriers

From bespoke domestic style electrical gates to commercial barriers and bollards. Physical security combined with security systems enhance the protection of sites and stop would-be intruders in their tracks.



Call us today for a free, no obligation survey

T H WHITE
ENERGY, FIRE
& SECURITY

01380 726656
thwhitesecurityandfire.co.uk

ENERGY, FIRE & SECURITY

T H WHITE OFFERS CARBON TRUST CAPITAL CONTRIBUTION FUND FOR SOLAR PV INSTALLATIONS

T H WHITE Energy, Fire & Security has been awarded prestigious Carbon Trust Certification which recognises excellence in providing energy technology to businesses, helping them to reduce their overheads and carbon emissions. Specifically, the award results from the company's extensive experience in providing solar PV for commercial and agricultural premises.



Achievement of the award involved a rigorous technical assessment and means that not only is T H WHITE now recognised officially for its special area of expertise, but it also means the company can offer special funding to clients interested in installing solar PV.

The new funding is called a capital contribution. Qualifying companies can access up to £5,000 towards a solar PV project and can be used in addition to the feed-in tariff. To help clients qualify we can assist with applications provided that they meet specific criteria and are classified under the scheme as an SME.

There are some forms to fill in – we require copies of your energy bills – and the application is then submitted for approval prior to start of works. The capital contribution is paid once you receive a commissioning certificate from us.

If you have a project in mind or one you have been thinking about which didn't stack up before, then it may be worth looking at the numbers again. Please give us a call on 01380 726656 or email energy@thwhite.co.uk for more information.

AGRICULTURE

SKI CENTRE CHOOSES HONDA AND LOGIC!



Tim Rochfort from our Toddington branch was recently contacted by Elliot Gregory at the Gloucester Ski and Snowboard Centre – a premier dry ski slope, renowned for the pleasure it has given to skiers of all abilities over the last forty years.

Elliot's request was to replace his unreliable old quad bike with something more professional which he could also use to cut and manage the grass surrounding the dry ski slope, a job he had been doing by hand with a Flymo!

Tim took two Honda ATV models for Elliot to try. After the 'hands-on' experience he went for a new Honda TRX500FM6 Foreman which offers the grip and power he needs, light, power steering and outstanding reliability. To meet Elliot's mowing challenge a new Logic TRM120 rotary mower was also delivered. This is towed behind the Honda and will help to keep the grass under control.

The Honda plays an important daily role providing transport with a trailer up and down the slopes to carry out essential maintenance. Health and Safety is taken very and all the users have arranged to attend an ATV Operator training course, also purchasing ATV safety helmets!

Elliot has been delighted so far with performance of his new ATV and mower and is also pleased with the finish and improved look of the Ski Centre. It's another example of the many applications in which Honda ATVs excel, combining with Logic accessories to deliver a durable and reliable work package.

PROJECTS

10,000 TONNE GRAIN STORE ALMOST COMPLETE



T H WHITE Projects is in the process of completing its third grain processing & storage contract in two years for Beeswax Dyson Farming Ltd across a number of sites in the UK.

The latest project, on the Compton Estate near Newbury, has resulted in the construction of a 10,000 tonne purpose-built grain storage facility with intake, cleaning, drying and conditioning of combinable crops at Mayfield Farm, plus the refurbishment of on-site machinery and spray buildings.

Under the terms of the contract, T H WHITE Projects acted as principal contractor with responsibility for the overall design and management of the civil, mechanical and electrical engineering elements throughout the 12 month programme, with the project scheduled for completion and handover in August 2018.

The plant is designed with a single 150tph trench intake system, conveying the grain via a rotary cleaner into a pair of continuous flow driers, or direct to store through an overhead belt conveyor and distribution cross chain conveyors, into one of the three dedicated crop storage bunkers. Each of these has a series of external fan units feeding a level-floor lateral ventilated system.

Each bunker has 6m tall grain walling and high access roller shutter doors to the front of the goosewing grey-clad building, with grain retaining doors located behind them.

Work on site commenced in January 2018 with the ground being cleared and excavated ready for the civil engineering to commence. In the following months would see the formation of the foundations, base slab and concrete operating apron.

As spring arrived, and with the civil engineering making reasonable progress despite the poor weather conditions, the portal framed steel building with a span of 38m and overall length approaching 72m was starting to take shape at Mayfield Farm, and it wasn't long before the wall and roof sheeting was being installed.

During April the mechanical sitework elements of the programme commenced with assembly and erection of the various items of handling, cleaning and drying equipment.

Working alongside the mechanical erectors were the site wiring and automation controls team, which ensured that the programme was collectively followed and integrated in line with the T H WHITE Projects overall contract management, to be ready for the 2018 harvest.

Further north in the UK, a new grain store had been constructed in the grounds of the Nocton Estate, Lincolnshire, as part of an ongoing development programme by Beeswax Dyson farming Ltd.

On this occasion T H WHITE Projects was awarded the mechanical and electrical elements of the contract. The cereal processing and grain storage facility was completed on time, ready for the 2017 harvest and its first consignments of crops.

The third project involved the construction of a new multi-purpose building at the Ack Ack Yard, Old Sodbury, South Gloucestershire, with T H WHITE Projects appointed to act as the principal contractor in the design and management of the civil, mechanical and electrical engineering elements of the programme. The project progressed well and to schedule, resulting in successful, on-time completion in December 2017 when the new facility was handed over to the satisfied customer.

Andrew Workman, head of business development for T H WHITE Projects, said: "It has been a pleasure working alongside the people in the Beeswax Dyson Farming organisation, from

the conceptual project stages through to the implementation and build programme. All three projects exemplified excellent teamwork, communication and professionalism resulted in the successful

design and construction of three fully operational grain processing and storage facilities within a two year period."

T H WHITE PROJECTS specialises in cereal processing and storage solutions of all sizes, from small farm installations to large commercial/industrial bulk facilities, taking each project from conception to completion. If you have a scheme you would like to talk about, please do contact us on 01380 723040 or email projects@thwhite.co.uk



The process area of the Compton grain store

GROUND CARE



Gareth Snelgrove (left) receives the new E-Z-GO RXV ELITE golf cars from Simon Bingham.

HAGLEY FIRST TO GO LITHIUM

T H WHITE Groundcare has delivered the first E-Z-GO RXV ELITE electric golf cars in the UK to Hagley Golf club in Worcestershire.

The four E-Z-GO RXV ELITE golf cars purchased by Hagley Golf Club come with an unprecedented five-year, unlimited-amp-hour warranty, and feature Samsung SDI lithium batteries which require zero maintenance and are over 50 per cent more efficient than key rivals. As well as charging in half the time needed by lead acid batteries, they are half the size and a fraction of the weight, taking a load off the turf. It all adds up to the lowest operating costs the industry has ever seen.

Gareth Snelgrove, head PGA professional at Hagley Golf Club, said: "This is our first golf car purchase since 2008. After trying out the E-Z-GO ELITE golf cars on demo, I knew we had to have them. The lithium batteries are so efficient, and will save us a lot of money in the long run. The cars are so much lighter as well, which means that we can build paths around the course using less expensive material, because the golf cars won't put half as much pressure on them."

"We are delighted to be the first club in the UK to have bought the ELITE golf cars – we have been using them for a while now and they have exceeded our expectations. They can get around 36 holes in one charge, and charge in a fraction of the time compared to our old lead-acid cars."

"The greenkeeping team love them as well; it's the only vehicle that they could get on the course in winter without causing damage to the turf. We have to thank T H WHITE for the excellent service once again; we have a great relationship with the staff and they are always willing to help with extra golf cars at events."

Hagley Golf Club is a 6,376 yard 18-hole golf course owned by Lord Cobham, the owner of neighbouring Hagley Hall. Lord Cobham purchased the club in 2017 from the Garratt family, who owned it since its inception in 1980. The club is set in 170 acres with picturesque views overlooking the Clent Hills.

To out more about Hagley Golf Club visit www.hagleygolfclub.co.uk, and for the low-down on E-Z-GO RXV ELITE golf cars contact any T H WHITE Groundcare branch.



HOZELOCK

COMPLETE WATERING SOLUTIONS

T H WHITE COUNTRY STORE

London Road, **Marlborough** (A4 towards Hungerford)
Open Mon-Fri 8.00am to 6.00pm;
Sat 8.00am to 5.30pm;
Sun 10.00am to 4.00pm
01672 518408

Sherston Works, **Knockdown**
Tetbury, Gloucestershire GL8 8QY
Open Mon-Fri 8.00am to 5.30pm;
Sat 8.00am to 4.00pm;
Sun 9.00am to 12.00pm
01454 238181

AGRICULTURE

AVEBURY PLOUGHING MATCH



Once again the Avebury & District Ploughing Association will be holding its annual ploughing match in September.

The event has a history that stretches back more than a century and traditionally sees the very best local ploughmen pitted against each other. Although the venue has yet to be decided, the date has been set for Saturday 29 September.

There will be classes for vintage, conventional and reversible ploughing open to ploughmen in regular full time employment within a 15-mile catchment area of from Avebury, as well as trade classes open to employees of agricultural engineering firms in North Wiltshire.

More details of the event and venue, as well as entry forms will shortly be posted at www.aveburyploughingassociation.co.uk.

DAIRY

FIRST NEW BAUER SEPARATOR IN UK AIDS ORGANIC CYCLE

'Organic' has become a desperately over-used term in agriculture. While the move away from chemical fertilizers and pest control is to be applauded and has encouraged a burgeoning market, it's not until you experience a truly organic farm that you realise just how different things can be.

Manor Farm at Chedworth, between Cirencester and Cheltenham, shows what it really means to go organic. Formerly a mixed arable and dairy farm, it is now a purely dairy farm with a 300-strong milking herd. Since making the decision to go organic in 2008, owners Jeannie and Tim Hamilton have worked with farm manager Robert Richmond to establish a sustainable environment for wildlife and farming in which the application of soil science and the natural treatment of waste are key factors.

It wasn't always like this, as Jeannie explains: "When it was a mixed farm we had Dairy Shorthorn and British Friesian cows, 130 in milk, and breeding replacement heifers. We operated a low input, low output system with autumn block calving. Now we have 300 cows and block spring calving and all the cows live outside all year round, outwintered on straw pads.

"Robert took over as manager in 2004 and, apart from the transition to organic status in 2008, he has demonstrated his passion for growing good grass, which adds to the health of the soil as well as contributing to the welfare of the cows. In 2011 he undertook a Nuffield Scholarship exploring carbon sequestration on soils.

"What you see on the farm today is the result of Robert's efforts. We have some 550 acres of grass, deep rooting herbal leys and fodder crops, growing on the free draining Cotswold brash soil,



Jeannie Hamilton, Bob Gallop (T H WHITE) and Tim Hamilton (above) and the new Bauer S300 slurry separator (below).



which has been improved with extensive composting."

In 2016 a former grain store was converted for the installation of a new milking parlour, and at the same time an aerobic and reed-based slurry handling system was put in. The objective was to process waste naturally to end up with water sufficiently clean to use for irrigation and, potentially, even washing down in the parlour.

"Early results have been encouraging," adds Jeannie, "but earlier this year we decided to install a slurry separator to

reduce the amount of fibre in the slurry, thus to provide a more efficient transfer of dirty water to the beginning of the aerobic system."

Enter Bob Gallop, T H WHITE's slurry specialist: "When Robert Richmond asked me to look at the intended application at Manor Farm, the timing could not have been better," he says. "A new Bauer compact slurry separator – the S300 – had been premièred at last year's Agritechnica exhibition in Hanover and I knew it would be perfect for Manor Farm."

The Bauer S300 is a new design of press-screw separator which is able to produce a higher dry matter content than its predecessor, with a similar throughput of up to 16m³ per hour. Hard-wearing components give it a long life and it benefits

from low operating costs and an optimum cost/performance ratio.

As the S300 is new and worldwide interest was high, Bob had to pull some hefty strings to obtain the unit, but he succeeded in getting the first one imported to the UK and work to install it on a purpose-built platform began in March. The slurry is drawn from a holding pit and passed through the separator which takes out a high proportion of the solids, returning the liquid residue to the reed beds.

"It's early days yet," says Jeannie, "but we believe the separator is already having a significant effect. We need to carry out chemical tests to confirm the results but they are looking extremely good. The dry matter that the separator extracts really is dry and odour-free and we add it to our compost which all goes back on the land."

If you have a slurry challenge that could benefit from the advice of a specialist, call Bob Gallop on 07831 883734, or email him, rg@thwhite.co.uk.

T H WHITE GROUND CARE

QUALITY USED MACHINERY



2016 Jacobsen Tri-King Ride On Cylinder Mower, £15,000. Three-wheel drive, power steering, 1.8m cut, 7-knife cylinders, ROPS, ideal for slopes, as-new condition.



2015 Jacobsen TR3 Triple Mower, £11,500. EX-DEMO, 7-knife cutting cylinders, rear roller brushes, grooved front rollers with scrapers, backlap kit, ROPS.



2013 Jacobsen Eclipse 322 Diesel Hybrid Riding Greens Mower, £9,500. EX-HIRE, 14hp diesel/electric hybrid, 3wd, dew whip holder, 11-knife cutting unit.



2015 Jacobsen LF550 Fairway Mower, £27,000. 2.54m cut, 4wd, programmable speed control, full text diagnostics, auto wet parking brakes, maintenance-free brakes.



2017 Ransomes Parkway 3, £25,000. EX-DEMO/HIRE, 2.5m cut, on-demand 4wd, 6-knife Magna cutting unit, ROPS, Lights, 33.5hp Kubota diesel.



2017 Amazone Profihopper 4wd SmartCut, POA-various available. 1.2m cut, 2.1m high-tip collector, ROPS, road lighting kit, out-front mowing and scarifying unit.



Ransomes HR300 Rotary Mower, From £10,000. 3-cylinder turbocharged diesel, hydraulic transmission, 60in cut, ROPS, lights & beacon.



Ransomes HR300 Flail Mower, From £15,000. EX-HIRE, 3-cyl turbocharged diesel, hydraulic transmission, 1.6m cut, Muthing FM flail deck, ROPS, lights.



2016 Jacobsen Turfcut Rotary Mower, £12,000. EX-HIRE, 2 or 4wd, 24.8hp diesel, hydraulic deck and traction, 60in rear discharge deck.



2016 Spider ILD 02 Remote Control Slope Mower, £19,000. EX-DEMO, 4-wheel steer mulching mower, slopes up to 40 deg, 48.4in cut, winch, beacon.



2017 Amazone Groundkeeper GH1350, £6,500. EX-HIRE, 1.35m cut, 1350 litres hopper capacity, low dump collector, mow, scarify, collect, chop and roll in one pass.



2014 Wiedenmann G160 Terra Spike, £11,500. EX-HIRE, deep aeration and removal of compactions up to 270mm, 1.6m width, manual depth control.



Wiedenmann SL6 Terra Spike £14,250. Deep aeration and removal of compactions up to 21cm depth, exchangeable tine holders, rear roller, VibraStop.



2014 Jensen A540 Variable tracked chipper, £15,500. 8in capacity, 37hp Kubota engine, 360deg rotating chute, hydraulic infeed control, adjustable trap.



E-Z-GO RXV-E Golf Car, £1,250. EX-HIRE, AC 48-volt drive, drive by wire speed control, auto fail safe parking brake, on-board chargers.

www.thwhitegroundcare.co.uk

Knockdown (Tetbury) Redditch

01454 238181 01527 597770

Reading Stockbridge

0118 976 0088 01264 811260

All items offered are subject to remaining unsold. Prices shown do not include VAT.

Some images may be library pictures.

TOTAL CROP PACKAGE SOLUTION

T H WHITE AGRICULTURE



Quality product • Price-competitive • Interest-free plan
CONTACT YOUR AGRICULTURAL PARTS DEPARTMENT

ARE YOU TALKING TO US?

BIG NAMES IN USED EQUIPMENT



2011 New Holland FR9050 Forage Harvester, hours: engine 2134, chopping 1582. **£83,000 RM**



Claas Jaguar 800 Forage Harvester, in working order **£10,000 RM**



2008 New Holland A440 8 Row Maize Header **£25,000 RM**



2004 New Holland, RI600Y 8 Row Maize Header, to fit New Holland FR, very good condition **£ 15,000 AT**



2002, New Holland RI600 Maize Header to fit 4wd self propelled **£ 14,000 AT**



2016, New Holland BB1290 standard Big Baler, large wheels, steering axle, 14,000 bales **£68,000 JW**



2002 New Holland BB940 Big Baler, 92000 Bales, good condition for age **£17,500 AT**



Kuhn VB1260 Round Baler, rotor variable, chamber opticut, excellent condition **£12,000 AT**



New Holland BR7060 Round Baler, good condition **£11,000 RM**



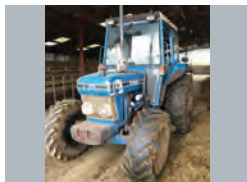
EX-DEMO - 2017 New Holland T7.315 AC, blue power, ECO CVT, front linkage, 445 hours **POA CL**



2016 New Holland T6.155, 50kph, NH Loader, front linkage & PTO, climate control **£62,500 RM**



2012, Case IH JXU 95, 4wd, 24 x 24 speed shuttle transmission, air con, air seat, **£35,000 RM**



Ford 4610 c/w loader, good working order **£10,000 RM**



2011 JCB 310 Pivot Steer, 5,100 hours, pin & cone carriage, pick up hitch, immaculate **£34,000 RL**



Available end June: 2013 Manitou MLT735 Powershift, just serviced, new tyres **£31,500 CD**



2010, Manitou MLT627, choice of JCB headstock or Manitou, very nice condition **£25,250 CD**



2015 Merlo 32.6, 3800cc, full service history, 4,600 hours, very good condition **£27,250 CD**



EX-DEMO - 2017 Honda UTV 700M2, 2/4wd and difflock, 2 year warranty, fitted towball, **£8,995 TR**



2014 Vogelsang 24m Dribble Bar, 24m macerators, Siemens flow meter **£28,000 BG**



Heva XHD Tip Roller, two seasons old, 8.2m width, 24in Cambridge break rings **£10,250 AD**

Sales Hotline: **01373 465941** (Mon-Fri 08.00-17.00) Out of hours: **07710 985957**

New: www.thwhiteagriculture.co.uk Used: www.thwhiteused.co.uk

MACHINERY

2011 New Holland BR7060 super feed round baler, very nice condition, 20,000 bales **£10,000 CD**
 2009 John Deere 459 conventional baler, always dry stored **£6,500 CD**
 New Holland 575 Baler, good condition **£3,500 RM**
 2014 Spearhead Stubblemaster 500 **£6,900 PC**
 2008, Kuhn Primor 2060H Straw Chopper, good working order **£6,500 RM**
 2013 Kverneland MT3228 Mounted 2.8 m cut Mower fitted with nylon conditioner **£6,750 SK**
 2013 John Deere 331 Rear Mounted Mower, exceptional condition **£5,750 AD**

2012 Kuhn FC283 Mower, VGC **£5,600 RM**
 2009 Kuhn GA4321 Gyrorake **£3,000 RM**
 Krone KR550 Tedder in good working order **£3,000 RM**
 Kuhn MM121 5 Furrow Plough **£4,000 JW**
 Hardy Sprayer, 18metre, MOT **£6,950 AT**
 2008, Kuhn AXIS 30.1QE Twin Disc Fertilizer Spreader, 1200l hopper & lights **£4,000 RL**
 Amazone ZA-M Maxis 24m Fertilizer Spinner, working order **£2,500 RM**
 JF Stroll VM 27 Feeder with extra long unloading conveyor **£8,000 RM**

Protech PS30 Post Knocker, excellent condition **£1,800 CD**
 EX-DEMO - Robomow RS630 mower, base station, wire & pegs, mower will come with all accessories to self-install, very good condition **£1,800 SK**

MULE

2016 Kawasaki Mule Pro DX 2 seater, 1095 hrs, full road legal, one owner, good tyres **£6,500 CD**

TANKER

1500 Slurry Tanker, good pump **£3,750 RM**

RB Ray Bennett 07710 985957
PC Paul Churches 07702 724308
SCT Steve Clucas-Tomlinson 07860 593339
SC Stuart Crook 07831 249489
AD Andy Daffurn 07860 331023
CD Colin Davis 07860 401211

RD Rhodri Davies 07775 003460
NE Nigel Ellis 07860 247367
BG Bob Gallop 07831 883734
SK Simon Knight 07860 712963
RL Ryan Lanfear 07769 248602
CL Charlotte Langmaid 07483 037516

CM Chris Martin 07919 044389
RM Richard Morgan 07831 351379
TR Tim Rochfort 07973 911934
AT Andy Taylor 07831 255811
JW Joe Woolley 07818 077591
PY Patrick Yeates 07780 225104

All items offered are subject to remaining unsold. Prices shown do not include VAT.

BRANCHES: DEVIZES: 01380 722381 FROME: 01373 465941 HUNTLEY: 01452 830303 KNOCKDOWN: 01454 238181
 MARLBOROUGH: 01672 512328 TODDINGTON: 01242 620211 STOCKBRIDGE: 01264 811260

