

GROUND CARE



Impressive precision seed drilling



Mid-size offers power, comfort and payload



Electric start – it's Logic!

PLUS extensive choice of quality used equipment, machinery and vehicles...

- AGRICULTURE
- PROJECTS
- GROUND CARE
- DAIRY
- COUNTRY STORE
- TRAILER CENTRE
- LORRY CRANES
- CONSTRUCTION
- MOTOR GROUP
- ENERGY, FIRE & SECURITY
- ONLINE STORE
- MACHINERY IMPORTS



A DELICATE UNDERTAKING

The challenge of keeping grass and undergrowth in trim around graves and memorials is a sensitive one – both in terms of maintaining the plots to the standards that families of the deceased rightly expect, as well as avoiding damage to the memorials and mowing equipment when working in tight spaces.

Coventry City Council manages six cemeteries, ranging from a vast and magnificent 19th century burial ground to more modern plots catering for today's interments and cremations. Responsibility for keeping everything in trim rests with Estate Manager for the Council's Bereavement Services, Brian Tranter.

"When I started my job three years ago the mower fleet was showing its age," said Brian. "They were out-front mowers which are not ideal for manoeuvring in the awkward spaces between the headstones, but budgetary considerations meant

that we had to extend their working life as long as possible so we purchased new cutting decks as an interim measure.

"When the opportunity came earlier this year to replace the mowers we took a lot of care in making our choice. In fact we had spent almost two years looking at the market and involving the operators who would use the machines in the selection process. After quite a few demonstrations there was a clear

winner – the Ferris zero turn range.

"The mid-mounted cutting deck makes these machines far more manoeuvrable than the out-front design we had been using before and they also feature rear discharge which helps to keep the cut grass off the memorials. The size to power ratio is exactly right for our needs.

"The real winner as far as our team was concerned is the level of comfort. Ferris makes the only zero-turn mowers with independent suspension. As you can imagine, the ground we work on is subject to quite a bit of

Continued on page 2 >>



Top: Ferris IS®2100Z and IS®600Z zero turn mowers manoeuvre between the monuments at Coventry's 1847 London Road Cemetery. Above: The Ferris IS®2100X features a fuel injected engine with Oil Guard lubrication which extends oil change intervals to 500 hours.

News and information from the T H WHITE Group

T H WHITE GROUP

MACHINERY IMPORTS

MACHINERY IMPORTS TEAM GROWS WITH NEW AREA MANAGER



The T H WHITE Machinery Imports team continues to grow as we welcome Stuart Winwood to the division as Area Manager, covering the North and Midlands. Stuart has 11 years' experience

in the Groundcare industry, his first job having been as a Demonstrator Driver with Hallmarket Turf Machinery in Wolverhampton, where he was responsible for selling turf harvesters across the UK and Europe.

"After that I moved into selling compact tractors from the likes of New Holland and Branson Tractors across the North of England," he says, "and then into the hire of specialist groundcare machinery with Turflet Hire. While at Turflet Hire I was responsible for opening the company's new Stafford depot in summer 2017, which was a great challenge!"

Joining T H WHITE Machinery Imports has been a fantastic step for me – I really enjoy being back in a sales environment and having the opportunity to go out and spend time with customers and dealer partners. The brands that we distribute are all leaders in their field and it is really exciting to be part of a business providing such high quality machinery for customers here in the UK. Building relationships with dealers, supporting them in making sales and providing the customers with the right machinery at the right price is a great feeling and I am looking forward to a long, successful career with Machinery Imports."

A DELICATE UNDERTAKING Continued from page 1



settlement, resulting in an undulating, uneven surface, and the suspension makes a huge difference over a long working day. The Ferris machines are also the only ones we saw with seat adjustment too – can you believe it?"

With the decision made, five Ferris mowers were ordered from T H WHITE – four of the popular IS®600Z compact models and a larger IS®2100Z with a 28hp fuel-injected Vanguard engine. This machine is also fitted with the Vanguard Oil Guard System – a large oil reservoir and dry sump replaces the usual arrangement, not only making servicing easier but also extending oil change intervals to 500 hours.

"A big benefit to us is dealing with T H WHITE and Lee Miles, who operates from the Redditch branch," Brian added. "When we need support I know I can call Lee and he will pull out all the stops to get us what we need. It's great to have that sort of back up from a local dealer who will always go the extra mile."

So how have the Ferris machines performed during their first few months in service? "What you need to understand," Brian explains, "is that our grass is nothing like you might find on a golf course. In the newer cemeteries where graves have been recently turfed

the Ferris mowers deliver exactly what you would expect from a quality machine – a fine cut and a tidy finish. But in our London Road Cemetery – which dates back to 1847 and was designed by Joseph Paxton of Chatsworth and Crystal Palace fame – we have to contend not only with very rough ground but also scrub that grows up among the grass and around the stones. The Ferris machines take all this in their stride – for example the IS®2100Z has a cutting deck with adjustment from 3.8 to 12.7cm, meaning that any kind of cut can be achieved. The manoeuvrability makes it possible to work carefully around historic monuments, resulting in one of the best preserved Victorian cemeteries in the country. We like to think we contribute to the very special atmosphere in this cemetery which attracts visitors from all over the world."

T H WHITE Groundcare is a Ferris dealer and any of our Groundcare branches will be pleased to provide you with more information on the Ferris range or arrange a demonstration. Ferris mowers are also imported from the USA by T H WHITE Machinery Imports – if you are interested in becoming a Ferris dealer please contact our Stockbridge branch on 01264 811260.

AGRICULTURE

PRECISION DRILLING AT A REGULAR TEMPO



Derek Pither of Pither Agriculture Ltd with his 6m Vaderstad 12-row Tempo

A Gloucestershire farming and contracting business has changed its precision seeder from a shoe to disc coupler type due to its consistency of planting depth.

Pither Agriculture Ltd farms in the Vale of Gloucester and the Cotswold Edge and the difference in temperature between the two areas plays an important role in the establishment programme of the company's 600 acres of autumn-sown oilseed rape.

"At that time of year there is a 2deg difference between the high ground and the Vale," says Derek Pither, "and as it gets later in the season the temperature drops faster so we need to plant about 10 days earlier." Oilseed rape is one of the break crops grown by the company on its 5,000 acres spread across a 10-mile radius from its base at Droys Court, Little Witcombe.

"We're ring-fenced in Gloucestershire," laughs Mr Pither. He explains that the acreage is split 50:50 between combinable crops and grassland. Winter wheat (1,500 acres) for the 2018 harvest, and 'small amounts' of winter and spring barley. There's also maize (60 acres), which, together with 300 acres of 3-4 year leys and 200 acres of meadow pasture, provide silage and hay for a 1,400 head store-to-beef herd, plus 1,500 acres of hill grazing.

A contracting operation accounts for 20 per cent of the business, which helps to justify the purchase of machinery such as the firm's 6m power harrows, self-propelled forage harvesters and combine harvesters. There are also some 650 acres of maize drilled under contract, which, together with the oilseed rape acreage, validated the purchase of a new precision seeder last year, a 6m mounted Vaderstad 12-row Tempo.

"We used to establish all the oilseed rape with our 8m Vaderstad Rapid and

the maize with a shoe-type coupler precision seeder," Mr Pither explains. "We wanted to change the seeder and trialled a number of manufacturers and models last autumn. From the demonstration we could see the benefits of the Tempo's discs, which cut rather than bulldoze a slot, and so allowed a more consistent planting depth, particularly in our varied soil types.

"I have considerable experience of Vaderstad equipment – I've run Rapids for the past 15 years and I liked the Tempo's build quality. It's heavy as it incorporates a lot of high-grade steel and we run it on a 200hp long wheel-base tractor with big wheels. I'm also impressed by the research and development that has gone into the drill."

Mr Pither specified the Tempo with micro-fertiliser/slug pellet applicators and wheel mark eradicators, and T H WHITE's Toddington branch delivered the drill in time for the 2017 sowing campaign. It established all the maize and, due to the temperature difference between the Vale and the Cotswolds, the bulk of the autumn oilseed rape. Ideally drilling takes place throughout August, with the Tempo establishing the Vale ground at a 51cm (20ins) spacing.

However, towards the end of the month the high ground is drilled with the Rapid at a standard 12.5cm spacing. "We need to plant 10 days earlier on the brush and we don't want to use the wide spacing as we won't get the canopy coverage before winter with the added potential problem of pigeons coming in," Mr Pither explains. "And the later it gets the more critical it becomes as the temperature drops faster."

Last spring the Tempo was configured as an 8-row when drilling the maize at a 76cm (30ins) spacing, but for this season the drill will be in its 12-row format for

both the maize and the oilseed rape. "The ability to use the drill as either an 8 or 12-row definitely gives us flexibility. "But it does take a day to reconfigure the drill and I don't see the benefit of going to the wider row width; I can't see a problem with 51cm or a disadvantage, the crop has still got a reasonable spacing. A 25 acre trial in the Vale in 2016 showed that there was no detriment in oilseed rape yield by going wide – the additional space gave the plants room to branch and compete.

"The Tempo is more expensive but we can drill faster, around 11kph. Although we don't push it, we aim for 100 acres per day in oilseed rape, and there is more even establishment due to the consistency of planting depth. Also, we can apply micro-fertilisers or slug pellets when drilling. If necessary, the E-Control system gives us the ability to vary the seed rate from the cab. So far, we've drilled 700 acres of maize and 500 acres of oilseed rape. We'll know more about the Tempo after harvest, but overall I'm very impressed with the drill."

To find out more about Vaderstad seeders or arrange a demo contact any T H WHITE Agricultural branch. Contact us now to obtain the best order terms before 31 July.

GROUP			
WHITE'S WORLD			
White's World is published monthly by T H WHITE. To contact our Divisions, call:			
Agriculture	Knockdown	01454 238181	
	Marlborough	01672 512328	
	Frome	01373 465941	
	Huntley	01452 830303	
	Toddington	01242 620211	
	Devizes	01380 722381	
	Stockbridge	01264 811260	
Projects		01380 723040	
Groundcare	Knockdown	01454 238181	
	Reading	0118 976 0088	
	Redditch	01527 597770	
	Stockbridge	01264 811260	
Dairy	Frome	01373 465941	
	Huntley	01452 830303	
Country Store	Marlborough	01672 518408	
	Knockdown	01454 238181	
Trailer Centre		0118 976 0088	
Lorry Cranes		01380 722381	
Construction		01672 512328	
Motor Group		01793 680480	
Energy, Fire & Security		01380 726656	
Online Store	www.thwhitestore.co.uk		
Machinery Imports		01264 811260	

www.thwhite.co.uk
head_office@thwhite.co.uk
 © T H WHITE Group 2018 E&OE
 Nursteed Road Devizes Wilts SN10 3EA
01380 722381

HARVEST BREAKDOWN & SERVICE

There's enough to think about at harvest time without worrying whether your equipment is going to let you down.

T H WHITE Projects can help with regular servicing and maintenance of driers, cleaners, conveyors,

augers and elevators to ensure they are ready for the busy period. We can supply and fit parts for most makes of equipment, new or old.

If you do suffer a breakdown we can be on the spot fast to get you back in action. Just call our hotline.

Harvest emergency hotline (24/7): 07919 394602

T H WHITE PROJECTS

Nursteed Road
 Devizes
 Wiltshire SN10 3EA
01380 723040



www.thwhiteprojects.co.uk
 serviceprojects@thwhite.co.uk

KEEPING YOU SAFE & SECURE

Access Control systems

From simple pinpad and swipe units to fingerprint biometric entry modules we can control access to any size of property, including those with restricted areas or secure rooms.



Intruder Alarms

From bells only to fully policed, monitored systems. We can install the right system tailored to you or your insurance company's requirements. Already have a system? T H WHITE can carry out your annual tests, with a friendly face and a service you can trust.



Fire Alarms

Business owner? Landlord? Health and safety manager? Our surveyors are fully accredited in system design and can work with you on any project to make sure you comply with the latest regulations.



Fire Extinguishers

We supply and maintain fire fighting equipment, and offer advice to keep you safe and compliant with the latest regulations. We also offer safety signage and accessories such as cabinets, vehicle boxes and escape ladders.



CCTV & IP Cameras

For security, health and safety or machinery monitoring, we have the system for you. From fully HD conversions of existing systems to IP set ups we can future proof your CCTV installation. Coupled with our smart phone technologies you can monitor your system from anywhere in the world.



Electric Gates & Barriers

From bespoke domestic style electrical gates to commercial barriers and bollards. Physical security combined with security systems enhance the protection of sites and stop would-be intruders in their tracks.



Call us today for a free, no obligation survey

T H WHITE
ENERGY, FIRE
& SECURITY

01380 726656
thwhitesecurityandfire.co.uk

ENERGY, FIRE & SECURITY

LEARNING AT THE SMARTER 'E' EUROPE EXHIBITION IN MUNICH



Maintaining a position at the leading edge of renewable energy and smart technology requires insight and exposure to what can be, at best, a complex supply chain, and at worst a melting pot of mixed concepts, products and services.

In the UK we have seen a revolution in the adoption of renewable technology across in all sectors and as the market models change the products continue to advance making them viable and competitive with fossil fuels in many cases with no requirement for subsidy support.

This month the T H WHITE Energy Fire and Security Division attended the worlds largest show of it's kind to deepen the Division's insight, stay in touch with new innovation and strengthen partnerships with some of the worlds leading manufacturers.

The event showcased a number of key product areas. Solar PV panel and equipment manufacturers demonstrated resilience and increased efficiency. Five years ago a 60-cell panel would have produced around 180-200wp, whereas they now range from 280-330wp output and at a much lower investment cost. Battery storage solutions were also featured. Tesla remains the most cost-effective per kwp also with the highest power output, but other manufacturers are developing their ranges rapidly and will catch up in the next couple of years.

E-mobility had changed the most compared to previous shows with the rapid growth of electric vehicles. There were not only chargepoints but also signs of solar companies looking at innovative tie-ins with solar PV. There was also a wide range of e-vehicles to test drive including e-boats, e-motorbikes and e-vans, as well as batteries to adapt existing vehicles.

Back in the present, the biggest takeaways from the show were the continued cost effectiveness and relevance for solar PV as a key part of our UK power generating mix. Our team have many years experience and have built some of the biggest rooftop systems in the UK and now maintain hundreds of systems for clients. Call us on 01380 726656 or email energy@thwhite.co.uk

DOUBLE ACCREDITATIONS



T H WHITE is leading the way for ISO 9001 accreditation in our region, being one of the first fire and security companies to achieve NACOSS Fire and Security Gold accreditation under the new revised ISO 9001:2015 quality standards. We are also one of the first companies in the UK to achieve BS5839:1:2017 accreditation for fire protection systems.

The ISO 9000 family of quality management systems standards is designed to help organisations ensure that they meet and exceed the needs of customers and other stakeholders while complying with statutory and regulatory requirements related to a product or service.

T H WHITE is now covered under ISO 9001 under the NACOSS GOLD SCHEME: for Intruder, CCTV and Access, and under the NSI Fire Gold Scheme for fire extinguishers.

At T H WHITE we are striving to achieve the very best quality standards in order to make our clients buildings safer greener and more efficient, now and for generations to come. Call us on 01380 726656 or email alarms@thwhite.co.uk.

MOTOR GROUP

GOODBYE TO MOTOR AFTER 31 YEARS

After much soul-searching, T H WHITE has sadly decided to withdraw from the motor business by selling its freehold premises in Swindon, which since 2013 has been home to the UK's first purpose-built Fiat Chrysler Automobile (FCA) Brand Centre.

Since T H WHITE relinquished its Land Rover dealership at Royal Wootton Bassett in 2015, the Hillmead, Swindon dealership has been the company's only involvement in the motor trade.

Despite being regularly commended by FCA UK as one of its best dealers, the ever higher demands on 'back room' functions have made it increasingly difficult to operate the Hillmead site as a stand-alone enterprise, unlike larger motor groups in which resources can be shared across a number of dealerships.

T H WHITE has never been prepared to let standards of customer service slip so the strategic decision has been taken to sell the Motor Group business to Johnsons Cars Ltd, one of the largest independent motor dealers in the country. As this article was being written (late June) the sale to Johnsons was in progress and is expected to have been concluded by the beginning of July.

Johnsons Cars Ltd operates from multiple sites and has existing Mazda and Volvo dealerships in Swindon. It also supplies vehicles produced by Abarth, Alfa Romeo, Fiat, Ford, Honda, Hyundai, Lexus, Mazda, Seat, Škoda, Toyota, Volvo and Volkswagen in other locations.

The entire staff of the FCA Swindon branch will transfer to Johnsons Cars Ltd which has welcomed them for their commitment and professionalism and the strong reputation they have built over the last five years. We wish them every success for the future.

We would also like to thank our customers, many of whom have been loyal to the Hillmead dealership right from its opening. We are confident that the transition will be seamless with a high level of continuity and that under the new ownership customers will carry on enjoying the levels of service they have come to expect. Johnsons Cars also proposes to expand the brand portfolio available from Hillmead.

The sale of the Motor Group ends T H WHITE's 31-year association with the motor trade, but will now enable T H WHITE Group to focus on the diverse activities of its other core businesses.

AGRICULTURE

ELECTRIC START FOR Paddock MOWER



The Logic TRM 120 is ideal for topping in paddocks – and now even better to use with electric start (right).

A new addition to the Logic family of rotary mowers is the Logic TRM120B13FWES – with easy electric start!

At the simple turn of a key the 12.5hp Briggs and Stratton Engine will burst into life without any of the effort required to pull a cord, although it's still there for back-up however.

The TRM range is outstanding at managing larger areas of grass quickly and efficiently at speeds up to 10kph. Little and often is the way to tackle longer grass with this machine and

within no time see the difference it can make towards achieving a tidier paddock.

There are five height settings, an adjustable towbar for offset and hitch height, remote throttle control and an all-important safety cut-out, all enhanced by outstanding Logic build quality.

For more information about the Logic TRM 1.2 and 1.5m, starting from £2,895.00 plus vat, please contact T H WHITE Logic specialists, Tim Rochfort on 07973 911934, or Simon Knight on 07860 712963.



BBQ ALL YOU NEED FOR AL FRESCO DINING!
£144 With a free bottle of lighting fluid and 5kg pack of charcoal



T H WHITE
COUNTRY STORE

London Road, **Marlborough** (A4 towards Hungerford)
Open Mon-Fri 8.00am to 6.00pm;
Sat 8.00am to 5.30pm;
Sun 10.00am to 4.00pm
01672 518408

Sherston Works, **Knockdown**
Tetbury, Gloucestershire GL8 8QY
Open Mon-Fri 8.00am to 5.30pm;
Sat 8.00am to 4.00pm;
Sun 9.00am to 12.00pm
01454 238181



2016 Jacobsen Tri-King Ride On Cylinder Mower, £15,000. Three-wheel drive, power steering, 1.8m cut, 7-knife cylinders, ROPS, ideal for slopes, as-new condition.



2015 Jacobsen TR3 Triple Mower, £11,500. EX-DEMO, 7-knife cutting cylinders, rear roller brushes, grooved front rollers with scrapers, backlap kit, ROPS.



2013 Jacobsen Eclipse 322 Diesel Hybrid Riding Greens Mower, £9,500. EX-HIRE, 14hp diesel/electric hybrid, 3wd, dew whip holder, 11-knife cutting unit.



2015 Jacobsen LF550 Fairway Mower, £27,000. 2.54m cut, 4wd, programmable speed control, full text diagnostics, auto wet parking brakes, maintenance-free brakes.



2017 Ransomes Parkway 3, £25,000. EX-DEMO/HIRE, 2.5m cut, on-demand 4wd, 6-knife Magna cutting unit, ROPS, Lights, 33.5hp Kubota diesel.



2017 Amazone Profihopper 4wd SmartCut, POA-various available. 1.2m cut, 2.1m high-tip collector, ROPS, road lighting kit, out-front mowing and scarifying unit.



Ransomes HR300 Rotary Mower, From £10,000. 3-cylinder turbocharged diesel, hydraulic transmission, 60in cut, ROPS, lights & beacon.



Ransomes HR300 Flail Mower, From £15,000. EX-HIRE, 3-cyl turbocharged diesel, hydraulic transmission, 1.6m cut, Mulching FM flail deck, ROPS, lights.



2016 Jacobsen Turfcut Rotary Mower, £12,000. EX-HIRE, 2 or 4wd, 24.8hp diesel, hydraulic deck and traction, 60in rear discharge deck.



2016 Spider ILD 02 Remote Control Slope Mower, £19,000. EX-DEMO, 4-wheel steer mulching mower, slopes up to 40 deg, 48.4in cut, winch, beacon.



2017 Amazone Overseeder, £9,800. EX-HIRE, 1.5m wide, two adjustable rows of reciprocating tines, adjustable seed outlet, 12 month warranty.



2017 Amazone Groundkeeper GH1350, £6,500. EX-HIRE, 1.35m cut, 1350 litres hopper capacity, low dump collector, mow, scarify, collect, chop and roll in one pass.



2014 Wiedenmann G160 Terra Spike, £11,500. EX-HIRE, deep aeration and removal of compactions up to 270mm, 1.6m width, manual depth control.



Jacobsen Core Harvester, POA, four available. EX-HIRE, pick-up, load and dump aeration cores in one step, for use with Jacobsen Truckster XD, warranted.



Billy Goat DL2500S Debris Loader, £3,400. 25 HP V-Twin engine, 18in, 6-blade, armour plated impeller with 18 cutting points, dual shredding, 5050cfm.



2014 Jensen A540 Variable tracked chopper, £15,500. 8in capacity, 37hp Kubota engine, 360deg rotating chute, hydraulic infeed control, adjustable trap.



2016 GreenMech Arborist 150, £11,500. EX-DEMO, 150mm chipping capacity, 34hp Kubota engine, disc-blade chipping system, two year warranty.



E-Z-GO RXV-E Golf Car, £1,250. EX-HIRE, AC 48-volt drive, drive by wire speed control, auto fall safe parking brake, on-board chargers.



Wiedenmann SL6 Terra Spike, £14,250. Deep aeration and removal of compactions up to 21cm depth, exchangeable tine holders, rear roller, VibraStop.



Turfco Widespin 1550 Trailed Top Dresser, £4,000. Switches easily from light to heavy spread, 30% more spinner angle, electronic control, consistent precision.



www.thwhitegroundcare.co.uk

Knockdown (Tetbury) 01454 238181 Reading 0118 976 0088
Redditch 01527 597770 Stockbridge 01264 811260

All items offered are subject to remaining unsold. Prices shown do not include VAT. Some images may be library pictures.

GROUP

NORMAL SERVICE WILL BE RESUMED AS SOON AS POSSIBLE!

If you are one of the several thousand people who normally receive a printed copy of White's World, you may be wondering why the June and July editions (Nos. 287 and 288) have not been sent to you in the normal way.

The reason is entirely down to that piece of recent legislation that you are probably tired of hearing about - the General Data Protection Regulation, or GDPR. The new law came into force in May and is designed to control the way in which businesses use the personal data they hold about individuals, as well as enabling customers to accept or decline communications.

Among the communications you receive will be some that you enjoy, others that are useful or informative, or even those that are important relating to safety and servicing of machinery you have purchased and other issues.

The latter communications are not affected by the new regulation as we, like many other businesses, have a statutory obligation to ensure you are aware of the need for servicing equipment at the correct intervals, safety issues or other matters such as recalls. Where the new law applies is for other types of communication such as news of events, new products, special offers and the like, as well as regular publications such as White's World. These are normally considered to be marketing communications.

We know that a great many of you appreciate receiving a regular copy of White's World and that you also would not wish to miss out on many of the

events and offers that can benefit you or your business. However, in order for you to continue receiving these communications we are required to seek a positive 'opt-in' from customers.

In T H WHITE's case, where there are many customers spread across several different divisions, this task has taken a little longer than we would have liked. Depending on the type of contact details we hold for you, you will either have received an email or a letter giving you the opportunity to confirm or decline future marketing communications.

We are delighted to say that the response has been overwhelmingly positive, with the great majority of customers opting to remain on our list. While this process was in progress we have not been able to send out the printed edition of White's World in the usual way, but in the meantime limited numbers of printed copies are available from our counters and, of course, we have continued to publish the content of White's

World on our website - go to www.thwhite.co.uk/whites-world.

If you have indicated that you are happy to receive emails we will send future copies of White's World digitally and if you have opted for post normal deliveries will resume with the August issue.

Sadly we are unable to send any further marketing communications to people who have not responded, although it's never too late to opt back in; all you need to do is visit www.thwhite.co.uk/sign-up and complete and submit the form.

AGRICULTURE



MULE PRO MX

This all-new smaller Kawasaki Mule Pro MX is powered by a torquey 700cc economical, fuel injected petrol engine, offering quiet, smooth and powerful performance.

Size-wise the PRO-MX offers the ideal balance between compact and full size UTVs. Measuring 2.795m long by 1.525m wide, it will fit neatly into more restricted areas around the yard, golf course, shoot, dairy or farm. Key features include a contoured bench seat, power steering, two and four wheel drive with difflock, towbar, independent suspension and disc brakes. Carrying and towing capacity is impressive at 317kg and 680kg respectively.

The petrol tank holds 36ltrs and the dashboard has all the important information to hand, with full lighting and an adjustable steering wheel.

A range of cab options and accessories will be available shortly.

The Mule Pro MX is due for delivery soon and T H WHITE has ordered demonstrators for you to try. So before you consider another brand of petrol UTV why not book a demo of the new PRO MX. Contact either one of our Groundcare specialists on 01454 238181, or for Agriculture Simon Knight on 07860 512763, or Tim Rochfort on 07973 911934.



T H WHITE AGRICULTURE

TOTAL CROP PACKAGE SOLUTION



Quality product • Price-competitive • Interest-free plan
CONTACT YOUR AGRICULTURAL PARTS DEPARTMENT

**ARE YOU
TALKING TO US?**

BIG NAMES IN USED EQUIPMENT



2011 New Holland FR9050 Forage Harvester, hours: engine 2134, chopping 1582. **£83,000 RM**



Claas Jaguar 800 Forage Harvester, in working order **£10,000 RM**



2008 New Holland A440 8 Row Maize Header **£25,000 RM**



2004 New Holland, RI600Y 8 Row Maize Header, to fit New Holland FR, very good condition **£ 15,000 AT**



2002, New Holland RI600 Maize Header to fit 4wd self propelled **£ 14,000 AT**



2016, New Holland BB1290 standard Big Baler, large wheels, steering axle, 14,000 bales **£68,000 JW**



New Holland BB9060 Packer Cutter Baler, steer tandem axle, hydraulic brakes **£ 39,000 AT**



2011 New Holland BB9060 Packer Cutter Baler, 42,000 bale count, very good condition **£ 37,500 AT**



2002 New Holland BB940 Big Baler, 92000 Bales, good condition for age **£17,500 AT**



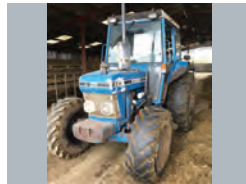
New Holland BR7060 Round Baler, good condition **£11,000 RM**



2016 New Holland T6.155, 50kph, NH Loader, front linkage & PTO, climate control **£62,500 RM**



2012, Case IH JXU 95, 4wd, 24 x 24 speed shuttle transmission, air con, air seat, **£35,000 RM**



Ford 4610 c/w loader, good working order **£10,000 RM**



2011 JCB 310 Pivot Steer, 5,100 hours, pin & cone carriage, pick up hitch, immaculate **£34,000 RL**



Available end June: 2013 Manitou MLT735 Powershift, just serviced, new tyres **£31,500 CD**



2010, Manitou MLT627, choice of JCB headstock or Manitou, very nice condition **£25,250 CD**



2015 Merlo 32.6, 3800cc, full service history, 4,600 hours, very good condition **£28,250 CD**



EX-DEMO – 2017 Honda UTV 700M2, 2/4wd and difflock, 2 year warranty, fitted towball, **£8,995 TR**



2014 Vogelsang 24m Dribble Bar, twin macerators, siemens flow meter **£28,000 BG**



Heva XHD Tip Roller, two seasons old, 8.2m width, 24in Cambridge break rings **£10,250 AD**

Sales Hotline: **01373 465941** (Mon-Fri 08.00-17.00) Out of hours: **07710 985957**

New: www.thwhiteagriculture.co.uk Used: www.thwhiteused.co.uk

MACHINERY

New Holland 575 Baler, good cond. **£3,500 RM**
 New Holland BC940 Baler, good working order **£2,900 RM**
 2008 Kuhn Primor 2060H Straw Chopper, good working order **£6,500 RM**
 2013 Kvernlund MT3228 Mounted 2.8 m cut mower with nylon conditioner **£6,750 SK**
 2013 John Deere 331 Rear Mounted Mower, exceptional condition **£5,750 AD**
 2012 Kuhn FC283 Mower, **£5,600 RM**
 2009, Kuhn GA4321 Gyrorake, good working order **£3,000 RM**

Krone KR550 Tedder, good order **£3,000 RM**
 Kuhn MM121 5 Furrow Plough **£4,000 JW**
 Hardy Sprayer, 18metre, MOT **£6,950 AT**
 2008, Kuhn AXIS 30.1QE Twin Disc Fertilizer Spreader, 1200l hopper & lights, **£4,000 RL**
 Amazone ZA-M Maxis 24m Fertilizer Spinner, working order **£2,500 RM**
 JF Stroll VM 27 Feeder with extra long unloading conveyor **£8,000 RM**
 EX-DEMO – Robomow RS630 mower, base station, wire & pegs, comes with all accessories to self-install, VGC **£1,800 SK**

TANKER

1500 Slurry Tanker c/w good pump **£3,750 RM**

HORSE BOX

2010, Ifor Williams HB505, Black, VGC **£2,100 SC**

WANTED

Used DeLaval milking equipment, mainly electronic Alpro computerised systems with or without in parlour feeding but most considered

Contact NE

RB Ray Bennett 07710 985957
PC Paul Churches 07702 724308
SCT Steve Clucas-Tomlinson 07860 593339
SC Stuart Crook 07831 249489
AD Andy Daffurn 07860 331023
CD Colin Davis 07860 401211

RD Rhodri Davies 07775 003460
NE Nigel Ellis 07860 247367
BG Bob Gallop 07831 883734
SK Simon Knight 07860 712963
RL Ryan Lanfear 07769 248602
CM Chris Martin 07919 044389

RM Richard Morgan 07831 351379
TR Tim Rochfort 07973 911934
AT Andy Taylor 07831 255811
JW Joe Woolley 07818 077591
PY Patrick Yeates 07780 225104

All items offered are subject to remaining unsold. Prices shown do not include VAT.

BRANCHES: DEVIZES: 01380 722381 FROME: 01373 465941 ANDOVERSFORD: 01451 850363 HUNTLEY: 01452 830303
 KNOCKDOWN: 01454 238181 MARLBOROUGH: 01672 512328 TODDINGTON: 01242 620211 STOCKBRIDGE: 01264 811260

