

PROJECTS

NEW SPOUT ON THE WATERFRONT



Palfinger hook loaders for Bithells



Fiat Mirror for a fully connected experience



New Iseki compact tractor and mowers

PLUS extensive choice of quality used equipment, machinery and vehicles...

- AGRICULTURE
- PROJECTS
- GROUND CARE
- DAIRY
- COUNTRY STORE
- TRAILER CENTRE
- LORRY CRANES
- CONSTRUCTION
- MOTOR GROUP
- ENERGY, FIRE & SECURITY
- ONLINE STORE
- MACHINERY IMPORTS



It's not every day that a Grain Terminal replaces its vessel loading shipping spout. However, 37 years after the original spout was installed back in 1981, that's exactly what was required by Shoreham Silo Services who operate the loading facility at Portslade, near Brighton in Sussex – part of the Bartholomews Group.

The original spout had been designed by T H WHITE Installation Ltd and fabricated by our old manufacturing company, T H WHITE Engineers Ltd, based at Vallis Road in Frome. After the spout had given almost four decades of excellent service, T H WHITE Projects was awarded the contract to design and manufacture a new high capacity telescopic shipping spout capable

of being extended and retracted during operation as it loads the ships moored alongside the quay.

Following manufacture and inspection at the T H WHITE



factory in Devizes, the completed shipping spout was despatched to the site in Shoreham. Here, the main challenge was to dismantle the original spout and install the new equipment within a weather window of opportunity, minimising operational down-time at the terminal.

The location of the actual site work was right on the water's edge, meaning that advance planning in preparing the RAMS (Risk Assessments Method Statements) for the scope of works was extremely important. All aspects of health and safety were appraised, including the potential of falling into the water from the overhead shipping tower or its adjacent walkways. The risk of a man in the water was mitigated by the engineers being required to wear life jackets while on any access equipment, or within a 2m radius of the quay edge during the installation programme.

With the RAMS completed, officially reviewed and approved by the Shoreham Port Authority, a two week window to undertake the scheduled work was identified at the start of the year.

Bad weather in mid January delayed the initial crane lift, but once the 70 mph winds abated it was possible to use the crane and associated mobile access equipment for the first phase of work involving the disconnection and removal of the old shipping spout and its connecting chute work. The latter was repaired and relined by the client while the main works were in progress, ready for refitting. The crane lifts were supervised by a T H WHITE Projects certified site engineer, together with other members of the team qualified as CPCs slingers and signallers.

Once the original components had been removed – and the matter of a stubborn set of 1981 vintage pivot pins addressed and overcome – the project moved to the next stage of scheduled work, the lifting into position of the replacement spout followed by the connection of the relined chute work within the large structural steel tower on the quayside.

To ensure the correct fitting

Continued on Page 3 >>

News and information from the T H WHITE Group

T H WHITE GROUP

DAIRY

SWITCH ON TO BRIGHT IDEA FOR INCREASED MILK YIELDS

Most of us tend to feel happier and more content during the long, sunny days of summer. In winter, the opposite is true; dark mornings, early dusk and grey days can lower your mood. Well, the same is true for cows, but in a way that can directly affect their milk production.

Dairy farmers have known for a long time that giving cows more light increases milk yield. Studies have shown that exposing cows to 16 hours of light each day will cause the pineal gland to produce less melatonin, in turn leading to increased feed intake and milk production. The uplift can be between 5% and 16% (averaging 8%) so it's an increase well worth having. Until recently, however, the energy cost of providing the extra lighting made the benefits questionable.

To see how things have changed we visited the Morgans' farm near Llantwit Major in South Glamorgan where T H WHITE installed DeLaval cow LED lighting in December.

The Morgans' farm is in a beautiful position on hills overlooking the Bristol Channel. During the summer months the cows graze on pastures which form part of the 300-acre mixed farm, but in winter it's a different story: "The wind here howls straight off the Atlantic - there's literally nothing between here and America to shelter us," says David Morgan. "We house the cows in the winter to give them some protection but obviously we still want to get the best milk yields that we can. We had been thinking about using lighting for a while to increase yields and we started talking to T H WHITE in the autumn."

To make the lighting effective you can't just use any light. Cows see a different part of the visible spectrum from humans so it's important not only to achieve the correct lux levels (brightness of illumination) but also the right colour



David and Will Morgan (on the right) with Neil Cartmell and George Eno from T H WHITE (on the left) at the shed where the Morgans' cows are housed over winter. Four DeLaval CL6000 LED lighting units have resulted in an increased milk yield of around 3 litres per cow.



temperature. Most LED lighting systems in use today were designed for factories - not the high ceilings of barns - and so use a lot of energy to achieve the right light levels for the cows. DeLaval, however, has taken an entirely new approach in designing its cow LED units.

Only in 2014 were efficient blue light-emitting diodes invented (awarded the 2014 Nobel Prize for Physics) and

DeLaval has used these together with additional optical lenses to achieve an even 'bat wing' light spread. The really clever part is that the DeLaval units deliver light at three different levels - 'Herd Light' for the cows' eyes, 'Work Light' for farmers' eyes, and 'Night Light' for the 8-hour dark period when the cows rest but farmers still need to work safely. By 'switching off' the light that the cows can't see and implementing automatic dimming as natural light levels increase, power consumption can be reduced by up to 75 per cent.

"When the DeLaval cow LEDs were installed the difference was almost immediate," says David. "We are seeing an increase of around 3 litres per cow - that's money well spent, I'd say!"

Contact our Dairy specialists on 01373 465941 (Frome, Somerset) or 01452 830303 (Huntley, Gloucestershire).

AGRICULTURE



OPEN EVENINGS A RESOUNDING SUCCESS

Hundreds of guests gathered at T H WHITE's new premises in Tytherington, Frome, on 6 February, and at the Knockdown branch on 19 February for evenings of fun, plus the chance to see behind the scenes, meet many of our leading manufacturers and enjoy special deals and a prize draw.

Both events were characterised by a buzz of enthusiasm and chatter filling the workshops as guests browsed the displays whilst being entertained by live music. Among the highlights was a popular ATV display, New Holland PLM and a live demonstration of Robomow automatic mowers. The parts stores were open for business all evening with a steady stream of customers tempted by special offers.

Welcoming guests at Frome, managing director Alex Scott applauded the efforts of all who had contributed to the successful move to the new premises which has given T H WHITE's Somerset operations a base to be proud of. Although trading for 186 years, the company has only operated in Somerset since 1968 when the Auto Mower Engineering Company of Norton St. Philip was purchased. A move was made to Vallis Road in Frome during 1975, but ever since 1998 plans have been underway to develop a purpose-built site. Much of the planning was guided by former managing director David Scott, whose wife Letitia (Alex's mother) unveiled a plaque to mark the official opening.

At Knockdown, Alex reflected on the fact that the business had already been trading at the site for 30 years, and before that at nearby Sherston. Many of the guests and their families had been T H WHITE customers throughout that time and it was wonderful to see them gathered at the event - their support was truly appreciated.

Voluntary contributions for entering the raffles at both branches raised a stunning £1,410.86, all of which will go to local air ambulance charities. Among the prize winners at Frome were Mr Bendall of Manor Farm walking away with a brand new Robomow and Tim Cox, with a ThermalArc Welder. At the Knockdown raffle similar prizes were donated by Robomow, New Holland, Sparex, Kuhn, Gallagher and Manitou, the first prize of a Robomow going to Max Mitchell and second prize of Goodwood Festival of Speed tickets being won by Mike Cullimore.

Both events were a great success and we hope to repeat them at a future date.



KEEPING YOU SAFE & SECURE

Access Control systems

From simple pinpad and swipe units to fingerprint biometric entry modules we can control access to any size of property, including those with restricted areas or secure rooms.



Intruder Alarms

From bells only to fully policed, monitored systems. We can install the right system tailored to you or your insurance company's requirements. Already have a system? T H WHITE can carry out your annual tests, with a friendly face and a service you can trust.



Fire Alarms

Business owner? Landlord? Health and safety manager? Our surveyors are fully accredited in system design and can work with you on any project to make sure you comply with the latest regulations.



Fire Extinguishers

We offer supply and maintenance of fire fighting equipment, together with honest and accurate advice to keep you safe and compliant with the latest regulations. We also offer safety signage and accessories such as cabinets, vehicle boxes and escape ladders.



CCTV & IP Cameras

For security, health and safety or machinery monitoring, we have the system for you. From fully HD conversions of existing systems to IP set ups we can future proof your CCTV installation. Coupled with our smart phone technologies you can monitor your system from anywhere in the world.



Electric Gates & Barriers

From bespoke domestic style electrical gates to commercial barriers and bollards. Physical security combined with security systems enhance the protection of sites and stop would-be intruders in their tracks.



Call us today for a free, no obligation survey

T H WHITE
ENERGY, FIRE & SECURITY

01380 726656
thwhitesecurityandfire.co.uk

PRE-HARVEST CHECK AND INSPECTION

MATERIALS PROCESSING, DRYING, BULK STORAGE AFTERMARKET CUSTOMER SERVICE AND SUPPORT

Contact us now on 01380 723040 and ask for Kevin Alnwick or send a mail to cssprojects@thwhite.co.uk

It's that time again to plan, think ahead and make sure everything is in good working order and ready for the forthcoming harvest.

- Health Check
- Detailed Report
- Free Advice
- Free Estimates
- Spare Parts Sourcing
- Fabrications
- Service & Repair
- Competitive Rates
- Safety Awareness

GRAIN STORE EMERGENCY OUT OF HOURS HOTLINE: 07919 394602

T H WHITE
PROJECTS



CALL US NOW AND
BE PREPARED

BIG NAMES IN USED EQUIPMENT



2010 New Holland FR9060, 4wd, grass & maize **£78,500 AT**



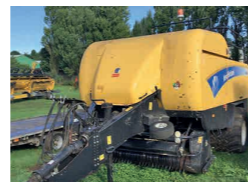
2008 New Holland A440 8 Row Maize Header **£25,000 RM**



2004 New Holland, RI600Y 8 Row Maize Header, to fit New Holland FR, very good condition **£15,000 AT**



2016 New Holland BB1290 standard Big Baler, steering axle, extended warranty, 14000 bales **£72,000 BW**



2011 New Holland BB9060 Packer Cutter Baler, 42000 bales, VGC **£37,500 AT**



2002 New Holland BB940 Big Baler, 92000 Bales, good condition for age **£17,500 AT**



New Holland BR7060 Round Baler, good condition **£11,000 RM**



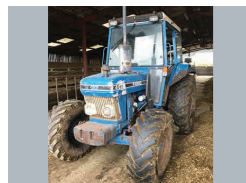
New Holland BC5060 Baler, like new, only done small amount of work **£10,200 RM**



2002 Claas 2200 Big Square Baler, 120 x 70 bale, rotor feed, single axle, good working order **£12,000 JW**



2016 New Holland T6.155, 50kph, NH Loader, front linkage & PTO, climate control **£62,500 RM**



Ford 4610 c/w loader, working order **£10,000 RM**



2016, Iseki TG6490, 36hp, 1,100 hrs, features new IQ dual-clutch transmission, resprayed **£9,995 PC**



2011 Manitou MLT 634T, 120 LSU PS, pin & cone, excellent condition **£31,000 JW**



2010, Manitou MLT627, choice of JCB headstock or Mantiou, very nice condition **£25,250 AD**



2017 Ex-Demo Schuitemaker Rapide 520S, air/hyd brakes, LED lights, mudguards **£59,000 BW**



2017 Schuitemaker Feedo 50.8 Feeder Wagon, variable floor speed, beaters & cross conveyor **£14,000 BW**



2012 Kuhn Trailed Sprayer, 3200 RHPA, 24m booms alloy, 2800 ltr, auto steer drawbar **£21,500 SC**



2005 Kuhn HR6003 folding Power Harrow, ready to work **£11,500 RM**



EX-DEMO - 2017 Honda UTV 700M2, 2/4wd and difflock, 2 year warranty, fitted towball, **£10,250 TR**



2014 Husqvarna HM P524 Outfront Mower, hydrostatic 4wd, 112cm combi deck **£5,500 SK**

Sales Hotline: **01373 465941** (Mon-Fri 08.00-17.00) Out of hours: **07710 985957**

New: www.thwhiteagriculture.co.uk Used: www.thwhiteused.co.uk

MACHINERY

- 2002 New Holland RI600 maize Header **£14,000 AT**
- Hardy Sprayer, 18metre, MOT **£6,950 AT**
- 2014 Kuhn FC313FF front mower condition, very good condition **£6,500 AD**
- 2008 Kuhn Primor 2060H Straw Chopper, good working order **£6,500 RM**
- Kuhn FC283 Mower, good condition **£5,600 RM**
- Kuhn MM121 5 Furrow Plough **£4,000 BW**

- 2005 John Deere 324 Mower Condition, exceptional condition, serviced, one previous owner, very well looked after and dry stored **£3,700 AD**
- EX-DEMO - Robomow RS630 mower, c/w base station, wire & pegs, mower will come with all accessories to self-install, very good condition **£1,800 SK**
- Opico 8 ton Grain Dryer, diesel powered, good working order **£3,800 RM**

TRAILER

- 2015, Logic ST447E Galvanised trailer, 1500mm x 1000mm x 870mm **£695 TR**

WANTED

Used DeLaval milking equipment, mainly electronic Alpro computerised systems with or without in parlour feeding but most considered **Contact NE**

- RB Ray Bennett **07710 985957**
- PC Paul Churches **07702 724308**
- SCT Steve Clucas-Tomlinson **07860 593339**
- SC Stuart Crook **07831 249489**
- AD Andy Daffurn **07860 331023**
- CD Colin Davis **07860 401211**
- RD Rhodri Davies **07775 003460**

- NE Nigel Ellis **07860 247367**
- BG Bob Gallop **07831 883734**
- MH Matt Hooper **07824 607087**
- SK Simon Knight **07860 712963**
- RL Ryan Lanfear **07769 248602**
- CM Chris Martin **07919 044389**
- RM Richard Morgan **07831 351379**

- TR Tim Rochfort **07973 911934**
- AT Andy Taylor **07831 255811**
- BW Ben Willcox **07826 917955**
- JW Joe Woolley **07818 077591**
- PY Patrick Yeates **07780 225104**

GROUND CARE NEW TRACTOR AND MOWERS AS ISEKI UK & IRELAND FORMED

The ever-increasing popularity of Iseki compact tractors and rotary mowers in the UK has led to the formation of a new company, Iseki UK & Ireland, specifically to distribute the Iseki range in the British Isles. The new business is headed by ex-President of Jacobsen, David Withers.

The formation of the new company comes at a time when the Iseki range is being expanded with exciting new products. Among these is Iseki's TLE3400 premium economy tractor. Fitted with a 38hp engine and three speed hydrostatic transmission and a lift capacity of 1,000kg, this compact model is ideal for a wide range of tasks from golf and groundcare applications to precision agricultural work where its light weight and minimal ground impact are a distinct advantage. Indeed, a TLE 3400 was selected by Harper Adams University in 2017 for a trial operated with Precision Decisions which set out to be the first in the world to drill, tend and harvest a crop without operators on the machines and agronomists in the field.

The Iseki TLE 3400 is supplied with agricultural or turf tyres as standard. An optional front loader is available.

Two new high-performance out-front rotary mower-collectors have also been launched - the Iseki SF224 and SF235, offered with 22hp or 32.5hp Iseki diesel engines and either 54in (1370mm) or 60in(1525mm) wide decks respectively. The new mowers are designed to facilitate grass cutting and collection in difficult areas and are equipped with easy-to-use two-pedal hydrostatic transmission and automatic or selectable 4WD. There is also a lockable differential for use when conditions demand it. To ensure efficient engine cooling the radiator is fitted with an automatic reversing fan, thus preventing blockage of the grille.



Iseki TLE 3400 premium economy tractor fitted with optional front loader and bucket.

The new collector, with a class leading capacity of 950 litres, is turbine driven providing uninterrupted high-performance grass transition into the collector, ensuring excellent collection of long or short grass in wet or dry conditions, adding a degree of compaction. The internal reciprocating

grass-shoot maximises the filling, increasing productivity. The collector can tip the cut grass at any height up to 2,125mm, allowing easy emptying into waste skips, truck beds or bins.

The new 60in (1525mm) deck is shaft driven, so no belts to replace, with timed overlapping swing tip blades to ensure that no grass is left uncut even when undertaking tight turns. The cutting height can be adjusted, without tools, using a single point height adjustment lever. Both sizes of decks may be fitted with a mulching plate should it be required.

Operators are well catered for with a spacious, comfortable platform, ergonomic controls and excellent visibility.

Please contact any T H WHITE Groundcare branch for full details.



Iseki SF235 out-front rotary mower collector

T H WHITE COUNTRY STORE

London Road, Marlborough SN8 2RN
Mon-Fri: 8am - 6pm Sat: 8am - 5.30pm
Sundays & Bank Holidays: 10am - 4pm
Tel: 01672 518408

Knockdown, Tetbury GL8 8QY
Mon-Fri: 8am - 5.30pm Sat: 8am - 12 Noon
Sundays & Bank Holidays: Closed
Tel: 01454 238181



STUNNING PLANTS
AT GREAT PRICES!

COMPOST! ALL OFFERS WHILE STOCKS LAST

Levington Essentials

£3.99 each or any 3 for **£10**

Valid on Levington Essentials range only

Levington John Innes

£5.99 each or **3 for 2**

Valid on promotional packs only





TAKE OUR GOLD PLUS EXTENSION TO KEEP THE BLUES BROTHERS IN THE FIELD FOR LONGER!

When you buy a new or in-stock New Holland T6 tractor from T H WHITE before 31 March 2018 – which comes with Gold Plus service cover as standard – we will give you an additional year or an extra 1,000 hours of Gold Plus cover free of charge!

FREE extension of **GOLD PLUS** service cover to provide **EITHER an extra year or an extra 1,000 hours of cover.***

* To qualify for this offer you must have a T H WHITE service contract in place for the duration of the chosen extended warranty period for a New Holland T6 tractor. Offer includes a £110 customer contribution when making a claim. Offer ends 31 March 2018. Terms and conditions apply. Please call for full details.



T H WHITE

AGRICULTURE

Frome, Somerset
01373 465941
Knockdown, Tetbury, Glos
01454 238181

Marlborough, Wilts
01672 512328
Toddington, Glos
01242 620211

Great finance terms available