



Stepping back to the future at Fulford Heath



A Case of the right plant



Sowing made easy

**PLUS** extensive choice of quality used equipment, machinery and vehicles...

- AGRICULTURE
- PROJECTS
- GROUND CARE
- DAIRY
- COUNTRY STORE
- TRAILER CENTRE
- LORRY CRANES
- CONSTRUCTION
- MOTOR GROUP
- ENERGY, FIRE & SECURITY
- ONLINE STORE
- MACHINERY IMPORTS



## AGRICULTURE

### MANAGING THE DUST AT MOONS HILL

If you drive towards the Mendip village of Stoke St Michael on the road from Cranmore, it's quite likely that you will be completely unaware of the massive 240-acre excavation at Moons Hill Quarry.

"That's just how we like it," explained Andy Open, Wainwright's Quarry Development, Estates and Special Projects Manager. "Ever since quarrying started at Moons Hill in 1891 Wainwright has always made a special effort to be good neighbours with the local community. The quarry is well screened by trees but we also take many other steps to minimise our impact on the environment. A key part of that is

dust control."

Moons Hill is the only Mendip quarry extracting basalt, an extremely durable and high quality volcanic stone which forms the basis of Wainwright's premium aggregates. The workings now extend well below the level of the water table so pumping is carried out round the clock, both to drain the lower levels of the quarry and to maintain the local water course. Despite the presence of all this natural water, dust control is essential both in summer and winter and it calls for some specialised kit.

**Continued page 2 >>**



News and information from the T H WHITE Group

**T H WHITE GROUP**

**GROUP**

**WHITE'S WORLD**

White's World is published monthly by T H WHITE. To contact our Divisions, call:

**Agriculture** Knockdown 01454 238181  
 Marlborough 01672 512328  
 Frome 01373 465941  
 Huntley 01452 830303  
 Toddington 01242 620211  
 Devizes 01380 722381  
 Andoversford 01451 850363  
 Stockbridge 01264 811260

**Projects** 01380 723040

**Groundcare** Knockdown 01454 238181  
 Reading 0118 976 0088  
 Redditch 01527 597770  
 Stockbridge 01264 811260

**Dairy** Frome 01373 465941  
 Huntley 01452 830303

**Country Store** 01672 518408

**Trailer Centre** 0118 976 0088

**Lorry Cranes** 01380 722381

**Construction** 01672 512328

**Motor Group** 01793 680480

**Energy, Fire & Security** 01380 726656

**Online Store** www.thwhitestore.co.uk

**Machinery Imports** 01264 811260

www.thwhite.co.uk  
 head\_office@thwhite.co.uk

© T H WHITE Group 2016 E&OE  
 Nursted Road Devizes Wilts SN10 3EA

**GROUP**

**MEET US AT...**

**Saltex** NEC Birmingham, 2-3 November, Stand A040 **GROUND CARE**

**Futurescape** Sandown Park Racecourse, Portsmouth Road, Esher, Surrey, 15 November **MACHINERY IMPORTS**

**WINTER WARMERS**

**New range of coats and waterproofs in-store now!**



**Knockdown, Tetbury GL8 8QY**  
**Mon-Fri:** 8am - 5.30pm  
**Sat:** 8am - 12 Noon  
**Sundays & Bank Holidays:** Closed  
**Tel: 01454 238181**

**MANAGING THE DUST AT MOONS HILL** Continued from front page



"That's where T H WHITE's expertise really helped us," said Andy. "For many years we have operated a tractor-hauled water tanker which we use to spray stockpiles, heavy plant and roads to keep the dust down. As the quarry has expanded it became obvious that we needed a much larger tanker and a beefy tractor to pull it – and stop it!"

"Our requirement was quite unusual in that we needed a heavy and powerful tractor, but it had to be relatively simple and ultra-reliable for the tough quarry environment. We definitely didn't want a tractor full of complicated electronics and we just didn't need most of the gadgets and gizmos now fitted to many agricultural tractors."

Andy put a specification out to a number of local suppliers to see what recommendations they would make. "Some of them took the easy route and were just keen to sell us a standard product, but what set T H WHITE apart

was the interest that Nick Norman and Bob Gallop from the Frome branch took in delivering just the right solution. Having carried out a number of trials and demonstrations Nick proposed a Case IH Magnum 340 tractor. At around 16 tonnes it had the weight we were looking for to ensure safe operation around the quarry with a 4,000 gallon tanker, and by choosing the base model we could have a thoroughly tried and tested tractor with great driver comfort but few potential complications. It also had PowerShift transmission, making it easier and safer to use on the gradients around the quarry."

Bob then worked closely with Hi-Spec tankers to design and build a bespoke 4,000 gallon water tanker with steering on the rear wheels to make it highly manoeuvrable and reduce tyre wear on the abrasive quarry surfaces.

"The tanker is fitted with a high pressure spray bar which we use for cleaning the tarmac roads on-site as well as the local public roads. In summer it's highly effective at damping down dust and in winter we will use it to clean off any residual deposits," adds Andy. "When off road the spray bar can be raised on hydraulic rams and the tanker is also equipped with a water canon for cleaning machines and damping down stockpiles."

Delivered on 1 September, the tractor and trailer combination was able to give demonstrations at an open day held to celebrate Moon Hill Quarry's 125th anniversary. "We have certainly ended up with the right combination," said Andy, "thanks to the work put in by Nick and Bob at T H WHITE even though this application is in a non-agricultural setting."

If you have an unusual application for which you need a bespoke solution, please do contact one of our teams – you might be surprised at what we can come up with.

**T H WHITE Country Stores**

**London Road, Marlborough SN8 2RN**  
**Mon-Fri:** 8am - 6pm **Sat:** 8am - 5.30pm  
**Sundays & Bank Holidays:** 10am - 4pm  
**Tel: 01672 518408**



**MAKE A SPLASH!**  
**Huge wellie selection – choose your style!**

**GROUND CARE**



**Course Manager Kim Blake (left), with his Deputy Graeme Stephenson and Lee Miles of T H WHITE and the Iseki TG6490 tractor with Jacobsen MH5 trailed gang mower.**

**BACK TO THE FUTURE AT FULFORD HEATH GOLF CLUB**

**When Kim Blake, Course Manager at Fulford Heath Golf Club on the southern fringe of Birmingham, was faced with renewing his mowing equipment, he had the courage to take a radical step backwards.**

"For about the last 30 years increasingly sophisticated self-propelled mowers have been the machinery of choice at many golf courses," he says. "But when we needed new machinery I had to think long and hard about the best way to use our money. I knew we couldn't do without a tractor as we need one to pull a trailed PTO-driven semi-rough mower that we purchased two years ago. We also needed a tractor with an additional 10hp.

"The tractor we had was a 22 year old Iseki which had done incredibly well – it had almost 10,000 hours on it so it was definitely time for a new one, but could I justify buying a self-propelled mower as well?"

In Kim's mind the answer was clear: buy a new tractor which, among many other tasks, could pull a trailed gang mower rather than having a dedicated self-propelled mower. But that went



directly against modern practice.

To help his decision, Kim contacted local rep Lee Miles of T H WHITE's Redditch branch to arrange a demonstration of a new Iseki tractor and a Jacobsen MH5 trailed mower.



"The tractor we chose was a fully-specified Iseki TG6490 IQ, It's in a different world from our old tractor with a fitted cab, the latest hydraulic

technology and ergonomic controls with superb driver comfort. The Jacobsen MH5 is a tractor-mounted 5-gang large area reel mower. The fully-floating cutting units have 8-bladed cylinders which achieve excellent ground contour-following with a 135in. width-of-cut.



"To be honest, I couldn't believe the quality of cut," Kim added. "Of course there's a disadvantage in having the wheels in front of the mower, but the tractor was fitted with Galaxy balloon tyres and hardly impacts the turf."

Kim went for it and ordered the Iseki/Jacobsen combination, a decision which three months on he has no cause to regret:

"Many people I know in the business thought I was crazy going back to this old style of mowing and I know it's not a choice that would work for everyone, but for Fulford Heath it has proved to be the perfect solution. It has reduced the number of engines on site that have to be maintained and I reckon it will save the Club around £20,000 over five years in depreciation and running costs.

"Since we have had the mower we have practised various techniques and I believe the finish is now on a par with a self-propelled mower... in fact, when we had a visit from our agronomist he said the finish couldn't be faulted and the club members have given us many compliments too. Well, you can't ask for more than that!"

**AGRICULTURE GROUND CARE TRAILER CENTRE**



**SUCCESS AT THE ROYAL BERKSHIRE COUNTY SHOW**

T H WHITE once again sponsored the supply of utility vehicles for the Royal Berkshire County Show on 17-18 September this year, as well as electric golf buggies to transport the show officials around the site. On our huge 25m x 30m stand we exhibited Ifor Williams trailers, the new Kawasaki Mule Pro DX and DXT, Greenmech Chippers, Iseki cut and collect and compact tractors, Amazone Horse Hopper and the Ferris and Wright ride on and pedestrian mower range – all attracting much interest.

PROJECTS

# NEW FARM AND ESTATES STORES IN OPERATION

The T H WHITE Projects Division has successfully designed and constructed three new on-farm grain drying and storage installations which, following commissioning and hand-over, have been operational during the 2016 harvest.

As reported earlier in the year, the three projects at Forest of Bere, Cobham Farms and North Hill Farms Ltd, were in the early stages of construction at the various sites, with the civil engineering works and steel frame buildings starting to take shape.

**North Hill Farms Ltd**



North Hill Farms Ltd part of the Wilton Estate, is located between the valleys of the Nadder and Wyle Rivers, where the landscape now boasts a new 2,800 tonne capacity Grain Store as a result of recent investment. The new facility has an olive green clad building with a floor area of 48 x 28m including a central dividing wall with two hardwood drying floor areas on one side and a large storage area for dry grain on the other.

Access to the store is via four tall roller shutter doors at the front and via the fan housing at the rear, which also provides the opportunity to walk along the top of

the air duct and drying floor arrangement to view the stored materials and the associated stirrer unit in operation, as seen in the photograph.

**Cobham Farms**

Located near Salisbury, the 2016 project investment by Cobham Farms has included the development of a new 2,500 tonne Grain Store which is set back into the hillside at the end of the approach road.



Following completion of excavations and groundworks to prepare the levels, the olive green clad, steel framed building was erected, complete with an internal combination timber drying floor covering 50 per cent of the available storage area, with a specially designed



North Hill Farms Ltd

elevated fan house to feed the lower level air duct. The photographs show the site location at Cobham farm plus the drying floor being loaded through one of the four front-facing entrance doorways during the harvest.

**Forest of Bere**

With the ability to hold 3,000 tonnes of combinable crops within its four 750 tonne bunkers, the new grain store on the Forest of Bere Estate near Stockbridge, Hampshire, is now complete. The 60 x 25m structure with a central dividing wall and two bunkers on either side has the ability to dry the grain via two sets of hardwood floors fed by central air ducts and a pair of fan housings to the rear of the building.

The juniper green clad Grain Store is one of several new farm machinery and operating buildings constructed as part of the project, together with an independent control room and weighbridge.

T H WHITE Projects specialises in grain processing and storage solutions of all sizes, from small farm installations to large commercial/industrial bulk facilities, taking each project from conception to completion. If you have a scheme you would like to talk about, please do contact us on 01380 723040 or email projects@thwhite.co.uk

## T H WHITE PROJECTS

### POST HARVEST INSPECTION AND REPAIR

#### MATERIALS HANDLING, DRYING, BULK STORAGE AFTERMARKET CUSTOMER SERVICE AND SUPPORT

Contact us now on 01380 723040 and ask for Kevin Alnwick or send a mail to [cssprojects@thwhite.co.uk](mailto:cssprojects@thwhite.co.uk)

**After your plant has worked hard during the harvest period it's time to get it inspected, serviced and repaired if necessary ready for future operation.**

- Health Check
- Detailed Report
- Spare Parts Sourcing
- Maintenance Plan
- Service Contract
- Free Advice
- Free Estimates
- Competitive Rates
- Safety Awareness

**GRAIN STORE EMERGENCY OUT OF HOURS HOTLINE: 07919 394602**

**CALL US NOW AND BE PREPARED**

AGRICULTURE



### SOWING MADE EASY

For the last couple of months our 6m demonstration Sky EasyDrill has been kept very busy sowing cover crops and more mainstream crops on farms across our area.

Essentially a no-till drill, the EasyDrill is capable of sowing direct into stubbles, into min-till conditions or ploughed, cultivated ground.

This versatility is made possible by the design of the coulter. Weight distribution is very easily adjusted to shift the bias from the front depth wheel to the rear press wheel. That factor alone means the Sky EasyDrill is more capable than most drills of working in less than ideal conditions, giving it a wider working window and making delayed drilling possible where blackgrass is an issue.

The particularly narrow working angle of the coulter-discs (just 3 deg) also means surface disturbance is kept to an absolute minimum – critical in limiting in-crop germination of grass weeds.

Sky has established a strong reputation, its drills having been in use across Europe for the last 30-40 years. The range includes 3m box drills plus 4m and 6m pneumatic units – wider machines are currently in testing and evaluation. Power requirement is particularly low – a 6m version typically requires just 180hp up front.

Various different options are available – our demo machine has twin hoppers for seed and fertiliser plus an extra ProHopper small seed metering unit for granules, slug-pellets, etc... For cover crop drilling this is very useful allowing three different varieties to be sown at once. All three metering units are controlled by one RDS Artemis box which is GPS-compatible to enable variable seed and fertiliser rates to be used.

Right now our 6m EasyDrill is undertaking five to six demonstrations a week, helping to establish both over-winter cover crops and mainstream cereals. If you would like to arrange a demonstration please contact your T H WHITE Agricultural branch.

AGRICULTURE

### SAVE £500 NOW ON SELECTED NEW HONDA ATVs

Save up to £500 when you purchase a new manual-gear-change Honda ATV before November 30.

Why not call one of our ATV specialists for further details? Offer



applies to Honda TRX420 Fourtrax and TRX500 Foreman (FM) models only. Part exchange is available, terms and conditions apply.

Call Tim Rochfort 07973 911934 (Taddington and Knockdown branches) or Simon Knight 07860 712963 (Marlborough and Frome branches).

DeLaval

Free  
3 x 60ml  
Carbogel  
with 1 x 3kg  
Electro  
balance\*

**Feedtech™ Electro balance**  
3kg Feedtech™ Electro balance £66.40  
Article number: 92065368

**Feedtech™ Carbogel** 60ml Feedtech™ Carbogel £8.25 each  
Article number: 92065358

**FREE**

Carbogel application 3 x 60ml; enough for 1 calf

**Feedtech™ Colostrum booster**  
1.2kg box £122.85 Article number: 92065366

**FREE**

**Free Colostrometer with 1 box of Colostrum booster\***

**NEW SMALL SIZE**

**DeLaval Calf Coat**

(New) Small size £24.45 (12.5% off RRP); Article number: 88267302  
Large size £25.68 (12.5% off RRP); Article number: 88267301

**DeLaval Colostrometer**  
£29.80 Article number: 94758680

**FREE**

**PeraDis™ 20L offer**  
Buy 2 x 20L PeraDis™ and get 1 x 20L PeraDis™ FREE

**BUY 2 GET 1 FREE\***

20L PeraDis™ disinfectant £58.35 each Article number: 92086212

To find out more about these products contact your DeLaval dealer: **T H WHITE Frome 01373 465941** or **Huntley 01452 830303**

\*T&Cs apply. Offers valid from October 1st - December 31st 2016, participating dealers only, all prices excl. VAT. offer only on normal RRP in GB & Northern Ireland



**2015 Fiat Panda 1.2 Easy, VO14 TYS, Solid White, 11,887 miles, £5,950.** Air Conditioning, Pollen Filter, Radio/CD MP3 Player, Stop/Start, Electric Front Windows, One Owner.



**2015 Fiat Panda 1.2 Pop, CF15 NBX, White, 5,000 miles, £5,450.** Stop/Start, Electric Front Windows, Hill Holder, Radio/CD/MP3, Tyre Pressure Monitoring System, 55mpg, One Owner.



**2015 Fiat 500 1.2 S, WR15 GGF, Passodoble Red, 10,753 miles, £7,250.** Start/Stop, Air Conditioning, Alloy Wheels, Electric Front Windows, Hill Holder, Radio/CD/MP3, 60mpg.



**2015 Fiat 500 1.2 S, LK16 NLG, Electronica Blue, 6,500 miles, £8,450.** Automatic Climate Control, Start/Stop, 16in Alloy Wheels, Electric Front Windows, Rear Parking Sensor, Front Seats with Memory, Hill Holder.



**2016 Fiat 500 1.2 Lounge, VE16 WFK, White, 1,400 miles, £9,950.** Air Conditioning, Fixed Glass sunroof with sunblind, Start/Stop, Rear Parking Sensor, Front Seats with Memory, Hill Holder.



**2015 Fiat 500 0.9 TwinAir Lounge, VN16 UKP, Pastel Green/Blue, 1,000 miles, £11,950.** Ex-Demo, Air Conditioning, Fixed Glass Roof with Sunblind, Rear Parking Sensors, Start/Stop, Hill Holder.



**2016 Fiat 500 1.2 Lounge LK16 NLG, Avantgarde Bordeaux, 1,364 miles, £10,450.** New Colour, Glass Sunroof with Sunblind, Air Conditioning, Rear Parking Sensors, Electric Windows.



**2016 Fiat 500L 1.3 MultiJet Pop Star Dualogic, VK16 FNR, Red, 500 miles, £13,950.** Ex-Demo, 5in Touchscreen, Air Conditioning, Cruise, 16in Alloys, Start/Stop, Radio/CD/MP3, Hill Holder.



**2015 Fiat 500X 1.4 MultiAir Pop Star, WM15 UAP, Blue, 11,215 miles, £12,450.** Dual Zone Climate Control, Cruise Control, 17in Alloys, Cruise, Parking Sensors, Electric Windows, One Owner.



**2015 Fiat 500X 1.4 MultiAir Cross Plus, WO15 VHP, Grey, 9,074 miles, £13,950.** Dual Zone Climate Control, Leather/Cloth, 18in Alloys, Cruise, Parking Sensors, Keyless Go, Tinted Glass.



**2015 Alfa Romeo Giulietta 2.0 JTDM-2 Sportiva, VN63 XHP, Red, 41,000 miles, £11,950.** Dual Zone Climate Control, Cruise Control, 18in Dark Titanium Alloy Wheels, Electric Windows, Sports Leather.



**2015 Alfa Romeo Giulietta 1.4 TB MultiAir Exclusive, VU65 NZH, Black, 8,000 miles, £15,450.** Dual Zone Climate Control, Cruise, Start/Stop, Leather & Microfibre, 17in Burnished Wheels, DAB.



**2015 Alfa Romeo Giulietta 1.6 JTDM-2 Progression, VF15 VEA, Blue, 4,000 miles, £15,650.** Ex-Demo, 16in 5 Double Spoke Alloys, Electric Windows, Uconnect, Start/Stop, Hill Holder.



**2015 Alfa Romeo MiTo 1.4 MultiAir Progression, VK65 LCO, Black, 2,000 miles, £9,950.** Climate Control, 5in Touchscreen, One-Touch Electric Windows, Hill Holder, TPMS, Uconnect, Ex-Demo.



**2014 Alfa Romeo MiTo 1.4 TB MultiAir Distinctive, VK64 RYD, Solid Black, 6,500 miles, £12,950.** 135 PS, Semi Auto, One-Touch Electric Windows, Cruise, Front Fogs, Heated Door Mirrors, FPS.



**2015 Abarth 500 1.4 T-Jet, VF15 LZU, Red, 7,396 miles, £11,950.** Climate control, Abarth 8-Spoke Painted Alloys, Blue & Me Hands-Free, Electric Front Windows, Hill Holder, Radio/CD/MP3 + USB.



**2015 Abarth 500 1.4 Turismo, VA15 WUR, Bicolour, 6,000 miles, £15,950.** One Owner, Abarth Red Leather, Auto Climate Control, Diamond-Finish Alloys, Electric Front Windows, Tinted Rear Glass.



**2016 Abarth 500 1.4 T-Jet 695 Biposto Record, VN16 WYU, Yellow, 200 miles, £29,950.** 190bhp, Rear Seat Delete, 18in O.Z. Alloy Wheels, Leather/Alcantara, Limited Slip Diff.



**2016 Jeep Renegade 1.4 MultiAir II Limited, VX16 RRV, Jetset Blue, 7,750 miles, £19,450.** Ex-Demo, Dual Zone Climate Control, Satnav, Leather, Power Windows, Heated Seats, Privacy Glass, Alarm.



**2016 Jeep Renegade 1.4 MultiAir II Limited, VK16 SEY, Anvil, 30 miles, £18,450.** Pre-Reg - Save £4,495! Function Pack 2, Satnav, Air Conditioning, Privacy Glass, DAB Audio, Cruise, Power Windows.



**2016 Jeep Renegade 1.4 MultiAir II 75th Anniversary Edition, VN16 YUK, Jungle Green, 5,000 miles, £23,950.** Air Conditioning, Cruise, MySky Roof, Satnav, Electric Door Mirrors, Parking Aid, Lane Assist.



**2016 Jeep Cherokee 2.2 MultiJet II Limited (Active Drive II), VK16 VOY, Billet Silver, 7,000 miles, £32,950.** Nappa Leather, Panoramic Sunroof, Tech Pack, Cold Weather Pack, Rain Sensor.



**2015 Jeep Grand Cherokee 3.0 CRD Summit, VO65 WNC, Deep Cherry Red, 7,783 miles, £35,450.** Panoramic Natura Plus Leather, Ventilated Heated Seats, Sunscreen Glass, Park Assist, Hill Start Assist, DAB.



**2016 Jeep Grand Cherokee 3.0 CRD Summit, VO16 RUH, Black, 7,008 miles, £39,950.** Panoramic Natura Plus Leather, Ventilated Heated Seats, Rear View Camera, Park Assist, Rear Seat DVD/BluRay.



**2013 Jeep Grand Cherokee 3.0 CRD Overland, RE63 AAN, Black, 33,000 miles, £24,950.** Leather, Sunscreen Glass, Voice Activated Controls, Satnav, Climate Control, Ventilated Front Seats, Cameras.



Russell Noyce in his new Case CX30 3t mini digger

## CONSTRUCTION THE RIGHT PLANT FOR THE JOB

**Wiltshire-based groundworks contractor Russell Noyce has recently been undertaking projects across the county boundary in Hampshire. Last year he completed some work at T H WHITE's own new Stockbridge branch and now he is working on a major extension project for Double H Nurseries Ltd at New Milton.**

Double H is a massive operation which has been supplying houseplants to leading supermarket chains since the 1960s. The company's greenhouses

cover many acres and the latest development is a project to insert a new large greenhouse covering the area between two existing ones. Russell was commissioned to carry out ground works and foundations before a team from Holland come to construct the new greenhouse.

"It's actually a much bigger job than it might appear," said Russell. "There's an enormous amount of pipework and other services that had to go in before the concrete slab could be prepared.

A sunken loading ramp for arctic also had to be excavated and lined with reinforced concrete - that alone was a significant job that took several weeks."

Reliable earth moving plant is essential for Russell's business and for quite a few years now he has been using Case excavators and Terex dumpers supplied by T H WHITE. The latest addition to his fleet is a Case CX30B 3t mini digger.

"The CX30 replaced an older Case machine and I have to say they just keep getting better and better. The new digger drives beautifully, it's comfortable for long hours of use and it has excellent reach and balance. In the early days of my business I always bought a well-known brand of earth moving machinery but I have to say the quality of that has just gone down and down. These days I think it would be hard to beat Case equipment for the price."

As well as the Case 3t digger Russell has a more compact 1.5t digger and a 3t Terex dumper. "Those machines cover most of our needs, but I'm hoping to buy another digger before too long and I'll be going to T H WHITE for that," he adds. "Their construction specialist David Price is a great guy who will do anything for you and that's worth as much as having good machinery."

For help in sourcing construction equipment of all sizes, contact David Price on 01672 512328, or dep@thwhite.co.uk.

## MOTOR GROUP



## NEW ALFA ROMEO MiTo FROM £12,960 OTR

The Alfa Romeo MiTo has been revised for 2016 with a new look to emulate the style and attitude of the all-new Alfa Romeo Giulia, with more technology, a revised range and the introduction of the updated 1.3-litre JTDM-2 turbo diesel with increased 95hp output and reduced CO2 emissions (just 89g/km).

The styling has been revised with new sports grilles, dark-finish headlamp bezels, revised rear bumper designs and new alloy wheels, as well as a new Alfa White paint option. Inside, all models feature new upgraded seat upholsteries, Uconnect Live services and a new finish on the centre console, dashboard and door trims. The New Alfa MiTo is available to order from just £12,960 OTR. Find out more at [www.motors.thwhite.co.uk](http://www.motors.thwhite.co.uk).

## T H WHITE AGRICULTURE

### GOLD

For orders placed before 30 November 2016, invoiced before 28 April 2017

**20% OFF**  
Labour and In-Stock Parts

### AGRICULTURAL EQUIPMENT WINTER SERVICE 2016-17

### SILVER

For orders placed before 30 December 2016, invoiced before 31 May 2017

**15% OFF**  
Labour and In-Stock Parts

### We will service ANY make, ANY model, ANY age

### BRONZE

For orders placed before 15 February 2017, invoiced before 30 June 2017

**10% OFF**  
Labour and In-Stock Parts

Contact your local branch NOW. Normal monthly terms apply for all work invoiced

Extended payment terms available subject to credit approval. T H WHITE Terms & Conditions apply to all Winter Service packages.

## BIG NAMES IN USED EQUIPMENT



2011 New Holland CSX 7050 Combine, 20ft header, 585 hrs, exceptional, recently serviced **£85,000 AT**



2009 Massey Ferguson Centora combine harvester, 22ft header **£54,000 AT**



2013 New Holland T7.200 auto command, front link & PTO, 50KPH, Excellent condition **£45,000 AT**



2013 New Holland T7.210, power command, 50kph, air brakes, sidewinder. Excellent Condition **£45,000 AT**



2011 New Holland T6030, 50kph, c/w new tyres, loader brackets, 3,400 hours **£31,500 BW**



2013 Case IH Puma CVX200, front linkage, 50kph with air. Michelin 650-42 tyres **£36,500 NN**



2011 Case IH Maxxum 140 4wd, 3675 hrs, air seat A, air con, 40kph, hyd push back hitch **£32,000 SC**



2012 Claas Axion 810, 50kph, front linkage & PTO, 3 spools, 1 years warranty, 2,300hrs **£32,000 RL**



2013 Manitou MLT 627, Manitou hyd headstock, aircon, 24in tyres 50%, 1650 hrs **£31,250 PC**



2013 Manitou MLA629 c/w new tyres **£29,000 BW**



2009, Manitou 735T, Aircon, Pick up hitch & tipping pipe, smooth ride, comfort seat, 4,400hrs **£25,500 RD**



2011 Claas Scorpion 6030 CP, 4530 hours, 80% tyres **£25,500 RL**



Ex-Demo Vaderstad Tempo 8 Precision Maize Drill, seed meters, seed sensors and control-station **£44,000 PC**



2011 VADERSTAD Rexistw Twin 4.5m Press, c/w levelling boards, raptor tines, VGC **£28,250 RL**



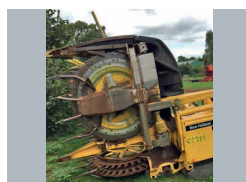
2012 Kuhn GA7501 Twin Rotor Rake, trailed model 6.85-7.45m c/w 3D axles **£8,500 AT**



2012 Kuhn VB2160 baler, crop cutter, drop down draw, wide pick up, excellent condition **£15,000 AT**



2008 Case IH RBX454 Rotor Feeder, variable chamber round baler, net & twine, braked axle. **£7,000 RD**



2004 New Holland 8 Row Maize Header, to fit New Holland FR. Very good condition **£15,000 AT**



2014 New Holland L218 Skid Steer Loader, Bucket. Good condition, 3120hrs **£14,000 AD**



2014 Marshall 1800 gallon tanker, 550x22.5 tyres, fully opening back door, mudguards **£5,650 BG**

Sales Hotline: **01373 465941** (Mon-Fri 08.00-17.00) Out of hours: **07710 985957**

New: [www.thwhite.co.uk](http://www.thwhite.co.uk) Used: [www.thwhiteused.co.uk](http://www.thwhiteused.co.uk)

### TRACTORS

- 2008, New Holland T6080, excellent condition, 5000hrs **£32,000 RM**  
 2014 New Holland T6.165, Quicke loader, 3600hrs **£35,000 RM**  
 2007 New Holland T6010 Delta, like new. 1000hrs **£25,000 RM**

### MACHINERY

- 2008 Vaderstad RDA400 4.0m Drill, 4,900 hectares, good condition **£12,500 RL**  
 2004 Simba Horsch 4 CO Drill, good condition **£8,000 AD**

- Vaderstad RDA400 4.8m Drill **£8,500 AT**  
 2014, Marshall 1800 gallon tanker 55 x 22.5 tyres, fully opening back door and mud guards **£5,875 BG**  
 2009, HeVa 7.5m rollers, 560mm rings **£5,450 RL**  
 2014 Spreadwise Industrial 6 Reeler, good condition **£4,995 BG**

### TRAILER

- Indispension 11' x 5'8" plant trailer, new bed with floor fixings, spare wheel & drop ramps **£1,100 SC**

### RTV/MOWERS

- 2011 Kubota 900 RTV, 1 owner, 873 hrs, 4x4 diesel, hydraulic tipping bed, radio, heater, service history, VGC **£7,500 SK**  
 Countax K18/50 liquid cooled hydrostatic ride-on mower, 50in deck, brush collector, electric lift, electric dump **£2,250 SK**  
 John Deere X304 hydrostatic four wheel steer ride on mower, 109 hrs, 42in cutting deck with spare and 42in mulching deck, VGC **£2,200 SK**

**RB Ray Bennett 07710 985957**  
**PC Paul Churches 07702 724308**  
**SC Stuart Crook 07831 249489**  
**AD Andy Daffurn 07860 331023**  
**CD Colin Davies 07860 401211**

**RD Rhodri Davies 07775 003460**  
**BG Bob Gallop 07831 883734**  
**MH Matt Hooper 07824 607087**  
**SK Simon Knight 07860 712963**  
**RL Ryan Lanfear 07769 248602**

**NN Nick Norman 07850 301575**  
**RM Richard Morgan 07831 351379**  
**AT Andy Taylor 07831 255811**  
**BW Ben Wilcox 07826 917955**  
**JW Joe Woolley 07818 077591**

All items offered are subject to remaining unsold. Prices shown do not include VAT.