



Harvest power: on tour with New Holland



Clarkson loves Giulia



Working with the utilities industry

PLUS extensive choice of quality used equipment, machinery and vehicles...

- AGRICULTURE
- PROJECTS
- GROUND CARE
- DAIRY
- COUNTRY STORE
- TRAILER CENTRE
- LORRY CRANES
- CONSTRUCTION
- MOTOR GROUP
- ENERGY, FIRE & SECURITY
- ONLINE STORE
- MACHINERY IMPORTS



## GROUND CARE

### PERFECT STRIPES AT GUARDS POLO CLUB

**The Guards Polo Club – one of the most illustrious polo venues in the world – is based at Smiths Lawn, Windsor Great Park. It maintains 10 polo pitches spread across 53 hectares, plus – at nearby Flemish Farm – 120 stables, an exercise track and a practice ground.**

With the playing season running from April through to mid-September, the Club hosts a sequence of prestigious events throughout the summer alongside hundreds of day-to-day games. These leading events include the Hurlingham Polo Association's International Day, the Duke of Wellington trophy and climaxed with the Nations Cup in September.

With 130 acres of grass subject to hard usage, the Grounds Team of 14 headed by Head Groundsman Peter Svoboda has its work cut out. After every match a special 'divot' team goes on the pitch to press back the divots by hand. This is then followed up by a manual repair using a 7.5 tonne mix of top soil and grass seed per pitch.

"We are constantly trying to achieve a pitch that is as near perfect as possible," explained Mr Svoboda. "We need good grass coverage plus adequate drainage to improve water infiltration and keep the pitches playable when wet, but also we need to irrigate when it's too dry.

"One thing the players and spectators expect is a beautifully manicured, striped finish. To achieve that we use a fleet of three Amazone GHS 210 Groundkeeper Jumbos, supplied and supported by T H WHITE Groundcare. These incredible machines are superb for a whole range of jobs – they will

mow, collect, scarify and roll – but it's the finish that stands out and we have had many compliments this year."

Due to the area that has to be covered, much of the mowing is done with 6m rotary mowers, but the Amazone machines are used to collect the clippings, also scarifying where necessary and are out on the pitches at least every other day. With the grass this year having grown profusely, the Jumbo 210s have been working flat-out picking up and taking the cut material away to a composting area as well as mowing the outer pitch sides.

Adequate surface porosity is aided by 6,000 tonnes of sand being applied annually in three applications, followed immediately by a run with the Verti Drain to ensure some deep down incorporation. Over the season power corers are also used. "We have tried many ways to collect the cores but the most effective has been to use our Amazone GHS 210 Groundkeeper Jumbo," adds Mr. Svoboda.

The Groundkeepers aren't the only Amazone machines used at the Guards Polo Club. As if the amount of grass growing naturally is not enough, Mr. Svoboda uses liquid fertiliser applied via a sprayer, as well as two passes with a slow release granular fertiliser applied with a 2,500 litre capacity Amazone ZA-M Profis 24m spreader. "We needed to put the stuff on more accurately than we were and so we bought into the weigh-cell technology of the ZA-M, which not only gives us an excellent spread pattern, but also the correct spread rate down to the last kilogram; it's expensive so we try and make the best use of it."

News and information from the T H WHITE Group

T H WHITE GROUP

GROUP	
<b>WHITE'S WORLD</b>	
White's World is published monthly by T H WHITE. To contact our Divisions, call:	
<b>Agriculture</b>	<b>Knockdown</b> 01454 238181
	<b>Marlborough</b> 01672 512328
	<b>Frome</b> 01373 465941
	<b>Huntley</b> 01452 830303
	<b>Toddington</b> 01242 620211
	<b>Devizes</b> 01380 722381
	<b>Andoversford</b> 01451 850363
	<b>Stockbridge</b> 01264 811260
<b>Projects</b>	<b>01380 723040</b>
<b>Groundcare</b>	<b>Knockdown</b> 01454 238181
	<b>Reading</b> 0118 976 0088
	<b>Redditch</b> 01527 597770
	<b>Stockbridge</b> 01264 811260
<b>Dairy</b>	<b>Frome</b> 01373 465941
	<b>Huntley</b> 01452 830303
<b>Country Store</b>	<b>01672 518408</b>
<b>Trailer Centre</b>	<b>0118 976 0088</b>
<b>Lorry Cranes</b>	<b>01380 722381</b>
<b>Construction</b>	<b>01672 512328</b>
<b>Motor Group</b>	<b>01793 680480</b>
<b>Energy, Fire &amp; Security</b>	<b>01380 726656</b>
<b>Online Store</b>	<b>www.thwhitestore.co.uk</b>
<b>Machinery Imports</b>	<b>01264 811260</b>
<b>www.thwhite.co.uk</b>	
<b>head_office@thwhite.co.uk</b>	
© T H WHITE Group 2016 E&OE	
Nursted Road Devizes Wilts SN10 3EA	

**AGRICULTURE**

**KAWASAKI'S MIGHTY MINI MULE**



**Kawasaki UK has just released the latest addition to its 2017 range of utility vehicles, the Mule 610SX 4x4.**

After many successful years on the market, the unique Mule 610 has received a facelift as well as many new features which include a more rugged front end with improved storage, nudge bar and lights.

The steering wheel is now shared with the larger Mule Pro – it's adjustable and has a chunky soft grip feel. The dashboard layout is all new with new digital instruments and the rear cargo bed is more robust



with new tie-down side rails. Measuring just 2.7m long by 1.3m wide, the Mule will go most places where access is limited, weighing only 439kg it has exceptionally low ground pressure keeping ground damage to a minimum. It's a heavyweight though in other areas, capable of towing 500kg and carrying 415kg. The figures are impressive.

It is powered by the same bullet proof 400cc petrol engine that drives an automatic transmission with high and low range and difflock. Optional accessories include a roof, screen and tow bar.

At the very competitive list price of £6,749 plus vat (excluding cab options), this compact UTV delivers such outstanding value for money with

reliable day-in, day-out working performance.

For further information please contact our Agricultural or Groundcare Divisions, or either Tim Rochfort on 07973 911934, or Simon Knight on 07860 712963.

**GROUND CARE**

**RANSOMES AND JACOBSEN'S WIDE CUT INNOVATORS**



**Jacobsen HR800**

**Ransomes and Jacobsen have launched three significant new products which are set to bring new levels of productivity to golf courses and maintained grounds.**

The big news is the all new Ransomes HR800 (070543) 4.9m (16 foot) width of cut wide-area rotary mower. Built on the same foundations as the Ransomes MP Series of wide area mowers, the HR800 has been further developed, to achieve a width-of-cut with a power-to-weight ratio, never before seen in

this class. Capable of mowing up to 8.6 hectares (21.3 acres) per hour, the HR800 achieves a weight saving of more than 800 kg against other 16 foot mowers, thus setting a new industry standard for the most efficient use of available power.

The Jacobsen HR700 (also available as the Ransomes branded MP653 XC) is a new 4.27m (14 foot) width-of-cut mower built off the successful MP platform. As the industry's only 14-foot wide mower it can cut up to 5.14 ha/hr, 25 per cent more than a typical 3.3m (11 foot) batwing mower, making it perfect for maintaining large open green spaces such as parks, golf courses, airports and sports fields.

Overall transport size is maintained, giving great manoeuvrability, the narrowest transport width in class (1.67m) and the extra cut width now guarantees a zero uncut circle.

All the new machines are powered by reliable Tier 4 Final compliant Kubota turbocharged diesel engines. For all the information, or to arrange a demo, please contact your Groundcare branch.



**Ransomes MP653 XC / Jacobsen HR700**

**PROJECTS**

**MAKING EXCELLENCE A HABIT**

**After several months of hard work and preparation T H WHITE Projects has successfully gained continued accreditation to British Standards with the award of the certificate covering the Quality Management System – ISO 9001:2015**

The operational procedure certification applies to the design, manufacture, construction and project management of bulk handling, processing and storage

projects, mechanical and electrical systems, structures, steelwork and related service support.

With the available mix of business in the associated market sectors, the importance of having such a certification will be fundamental to the ongoing success of T H WHITE Projects.

A big thank-you is due to those involved in the process and securing of this excellent achievement!



**GROUP**

**MEET US AT...**

**The Tow Show** Telford International Centre, Telford, Shropshire TF3 4JH, 7-8 September, **LORRY CRANES**

**Romsey Show** Broadlands, Romsey, Hampshire, 10 September, **GROUND CARE AGRICULTURE**

**Royal Berkshire Show** Vodafone Avenue, Newbury Showground, Priors Court, Hermitage, Thatcham, Berks, RG18 9QZ, 17-18 September, **GROUND CARE**

**Futurescape** Sandown Park Racecourse, Portsmouth Road, Esher, Surrey, 15 November **MACHINERY IMPORTS**

**Saltex** NEC Birmingham, 2-3 November, Stand A040 **GROUND CARE**



**HEYGATES HORSE FEED**



**NUTS**  
**£4.99**  
PER BAG

**MIX**  
**£5.99**  
PER BAG

**SPILLERS HAPPY HOOF**

**2 BAGS FOR £20**



**DEALS ON BULK ORDERS**

**T H WHITE Country Store**  
**London Road**  
**Marlborough SN8 2RN**  
**01672 518408**

**BEST OF BRITISH...BEST OF BERKSHIRE**



**BERKSHIRE'S BIG WEEKEND!**

- THE BEST LIVESTOCK FROM ACROSS THE UK
- A UNIQUE LOCAL SHOPPING EXPERIENCE
- A STUNNING ARENA LINE-UP!



**17-18 SEPTEMBER 2016 BOOK YOUR ADVANCED RATE TICKETS TODAY!**  
**WWW.BERKSHIRESHOW.CO.UK**

PROJECTS

# OPERATING WITH SAFETY IN UTILITIES

**Working closely with Chippenham-based Huber Technology, the T H WHITE Projects team has been actively involved in the utilities industry.**

Having achieved several successful references for projects at Beddington, Hogs Mill and Crawley, for which T H WHITE Projects manufactured and installed structures and platforms, the latest opportunity involved several systems being installed at a waste water treatment facility in Basingstoke, Hampshire.

The new project involved the design, fabrication, supply and installation of an additional four large operating platforms with their associated supporting steelwork and access stairways. Each of the four operating platforms, which

accommodate the Huber Technology process machinery on elevated floor areas, were made at the T H WHITE factory in Devizes.

The platforms have been made to a high standard of quality and workmanship, thus meeting the arduous industrial requirements imposed by the Water Industry. The hot-dip galvanised finished platforms, two with a floor operating size of 2.5 X 6.0m, and two at 3.0 x 6.0m, provide safe working access to each unit for all site personnel.

The platforms facilitate daily inspection and monitoring of the Huber Technology process equipment which itself is of outstanding quality and produced from a high grade of stainless steel due to the aggressive nature of

the material being processed through its internals in the waste water treatment plan.

Working on a utilities site requires a highly skilled and trained team of engineers to meet the very strict codes of practice and health and safety regulations. Members of the T H WHITE Projects team have the necessary qualifications and skills which contributed to the successful completion of the Basingstoke project.



The photographs show the environment of the waste water treatment plant and three stages of the build programme, with the base slab being prepared for the main steelwork and fabricated structure, the platform under construction and the finished system after commissioning.

T H WHITE Projects is soon to move into a new purpose-built office and factory at the Devizes premises, where it will have the capability to design, manufacture & install fabrications from either mild steel or stainless steel to suit all requirements, such as supporting structures, towers, gantries, mezzanine floors and platforms, plus any necessary access stairways and ladders.

As well as the fabrication and installation of bespoke items, T H WHITE Projects specialises in grain processing and storage solutions of all sizes, from small farm installations to large commercial/industrial bulk facilities, taking each project from conception to completion. If you have a scheme you would like to talk about, please do contact us on 01380 723040 or email [projects@thwhite.co.uk](mailto:projects@thwhite.co.uk)



**T H WHITE PROJECTS**

## POST HARVEST INSPECTION AND REPAIR

### MATERIALS HANDLING, DRYING, BULK STORAGE AFTERMARKET CUSTOMER SERVICE AND SUPPORT

Contact us now on 01380 723040 and ask for Kevin Alnwick or send a mail to [cssprojects@thwhite.co.uk](mailto:cssprojects@thwhite.co.uk)

**After your plant has worked hard during the harvest period it's time to get it inspected, serviced and repaired if necessary ready for future operation.**

- Health Check
- Detailed Report
- Spare Parts Sourcing
- Maintenance Plan
- Service Contract
- Free Advice
- Free Estimates
- Competitive Rates
- Safety Awareness

**GRAIN STORE EMERGENCY OUT OF HOURS HOTLINE: 07919 394602**

**CALL US NOW AND BE PREPARED**



# COMBINED POWER!

New Holland on Tour at Down Ampney with T H WHITE



## AGRICULTURE

**Unpredictable weather has resulted in mixed harvests over the last few years and 2016 has been no exception.**

The lack of a cold winter, followed by extremely wet spells, caused widespread leaf rust in wheat and the rape crop was extremely disappointing. Barley has fared rather better, but the difficulties nevertheless emphasise the importance of efficient techniques and the use of equipment that can maximise yields.

To give our customers the opportunity to see and gain first hand experience of some of the latest machinery, T H WHITE hosted an impressive combine demo day on 17 August as part of New Holland's Harvest Demo Tour, at Down Ampney near Cirencester, courtesy of Farmcare.

From 08.00, our guests were treated to bacon rolls before a walk-around of New Holland's latest combine harvesters and balers, as well as Väderstad cultivation equipment. Then came the opportunity to drive the machines in real working conditions.

As three combines raised the dust

while they worked in formation to harvest a field of wheat, it was a sight to remember. Especially impressive was the new CR8.80 – the latest in the CR range, fitted with a 30ft Varifeed header. This offers farmers a very high output machine in an extremely narrow format (max. 3.3m) suitable for tight lanes and narrow gateways. Trailer after trailer pulled alongside as the combines discharged the grain, illustrating the incredible tonnage per hour of which these machines are capable.

The only unfortunate aspect was that, with rain in the forecast many who would have liked to attend the event were forced to focus on bringing their crops in while the weather held good. No matter – if you missed it you can see a terrific action replay. Just go to [www.youtube.com](http://www.youtube.com) and search for 'T H WHITE Combine Demo Day 2016'.

For more information on any New Holland or Väderstad equipment please contact your T H WHITE Agriculture Sales Representative.





**2015 Fiat Panda 1.2 Pop, CF15 NBX, White, 5,000 miles, £5,750.** Stop/Start, Electric Front Windows, Hill Holder, Radio/CD/MP3, Tyre Pressure Monitoring System, 55mpg, One Owner.



**2013 Fiat 500 1.2 Lounge, WR13 UNM, Grey, 10,000 miles, £6,950.** Air Conditioning, Start/Stop, Electric Front Windows, Fixed Glass Roof, 15in Alloy Wheels, Radio/CD/MP3, 55mpg.



**2015 Fiat 500 1.2 S, WR15 GGF, Passodoble Red, 10,593 miles, £7,250.** Start/Stop, Air Conditioning, Alloy Wheels, Electric Front Windows, Hill Holder, Radio/CD/MP3, 60mpg.



**2016 Fiat 500 1.2 Lounge, LK16 NLG, Avantgarde Bordeaux, 1,364 miles, £10,450.** Air Conditioning, Fixed Glass Roof, with sunblind, Start/Stop, 15in Alloys, Electric Front Windows.



**2016 Fiat 500 1.2 Lounge, AU16 ZKN, Glam Coral, 547 miles, £10,450.** Air Conditioning, Fixed Glass sunroof with sunblind, Start/Stop, Rear Parking Sensor, Front Seats with Memory.



**2015 Fiat 500 1.2 Lounge, WU64 YCH, White, 13,756 miles, £7,950.** Start/Stop, Air conditioning, Fixed Sunroof, Voice Recognition, 15in Alloys, Electric Windows, Blue & Me Infotainment, Bluetooth.



**2016 Fiat 500L 1.6 MultiJet Lounge, VA65 UAC, Red, 10 miles, £14,950.** Pre-Reg, Electric Sunroof, Electric Windows, Auto Lights with Rain Sensor, Electric Door Mirrors, Front Fog Lights.



**2014 Fiat 500L 1.3 MultiJet Trekking, VP14 WRO, Ne Age Cream, 25,844 miles, £8,450.** Pre-Reg, Electric Sunroof, Electric Windows, Auto Lights with Rain Sensor, Electric Door Mirrors.



**2015 Fiat 500X 1.4 MultiAir Cross Plus, WO15 VHP, Grey, 9,074 miles, £13,950.** Dual Zone Climate Control, Leather/Cloth, 18in Alloys, Cruise, Parking Sensors, Keyless Go, Tinted Glass.



**2015 Fiat 500X 2.0 MultiJet Cross Plus, WO15 WYJ, Grey, 6,500 miles, £15,950.** Auto Climate Control, Dark Tinted Glass, Cruise, Rear Parking Sensor, Satnav, 5in Touchscreen, Electric Windows.



**2015 Alfa Romeo MiTo 1.3 JTDM-2 Junior, VE15 RFL, Anthracite Grey, 2,300 miles, £10,950.** Dual Zone Climate Control, Dark Tinted Windows, White Alloy Wheels, Sports Pedals, 5in Screen.



**2016 Alfa Romeo MiTo 1.4 TB TwinAir Collezione, VA16 TSU, White, 100 miles, £13,950.** Stunning Chequered Roof, Cruise, Satnav, Voice Recognition, Tinted Windows, 17in Bronze Alloy Wheels.



**2016 Alfa Romeo 4C 1.8 TBI Spider, VK16 UFH, Competizione Red, 1,000 miles, £57,450.** Black Leather, Sports Seats, Racing Double Tail Pipe, Air Conditioning, Red Brake Callipers, Sports Seats.



**2016 Alfa Romeo Giulietta 1.4 TB MultiAir Sprint Speciale, VE16 VHY, Matt Magnesio, 50 miles, £17,950.** Delivery Mileage, Special Paint, 18in Dark Alloys, Cruise, Climate Control PDC.



**2015 Alfa Romeo Giulietta 2.0 JTDM-2 Collezione, VE65 LJY, Metallic Blue, 3,000 miles, £19,950.** Bose Sound System, Cruise, Climate Control, Heated Front Seats, Rain Sensor, PDC.



**2016 Abarth 500 1.4 T-Jet 695 Biposto Record, VN16 WYU, Yellow, 200 miles, £29,950.** 190bhp, Rear Seat Delete, 18in O.Z. Alloy Wheels, Leather/Alcantara, Limited Slip Diff.



**2015 Abarth 500 1.4 T-Jet, VF15 LZU, Red, 7,396 miles, £11,950.** Climate control, Abarth 8-Spoke Painted Alloys, Blue & Me Hands-Free, Electric Front Windows, Hill Holder, Radio/CD/MP3 + USB.



**2015 Abarth 500 1.4 T-Jet 595 Competizione, VN65 PWJ, Multicolour, 900 miles, £17,950.** Ex-Demo, 180bhp, Titanium Finish Alloys, Leather/Alcantara Abarth Corsa Front Seats, Climate Control.



**2016 Jeep Renegade 1.4 MultiAir II Limited, VK16 SEY, Anvil, 30 miles, £18,450.** Pre-Reg - Save £4,495! Function Pack 2, Satnav, Air Conditioning, Privacy Glass, DAB Audio, Cruise, Power Windows.



**2016 Jeep Renegade 1.4 MultiAir II Longitude, VE16 VHW, Pastel Red, 500 miles, £17,950.** Satnav, Cruise, Air Conditioning, DAB Audio, 5in Touchscreen, Hill Start Assist, Rear Parking Sensors.



**2016 Jeep Cherokee 2.2 MultiJet II Night Eagle, VA16 VHH, Bright White, 100 miles, £28,950.** Nappa Leather, Delivery Miles, Cruise, Climate Control, DAB Audio, Heated Front Seats, Alarm.



**2016 Jeep Cherokee 2.2 MultiJet II Night Eagle, VO16 HLV, Black, 5,000 miles, £32,850.** Ex-Demo, Black Nappa Leather, Dual Zone Climate Control, Tinted Glass, Heated Front Seats, Cruise, DAB.



**2016 Jeep Grand Cherokee 3.0 CRD Overland, VK16 VOD, Grey, 8,000 miles, £32,850.** Ex-Demo, Nappa Leather, Ventilated Front Seats, Dual Zone Climate Control, Panoramic Sunroof, Rear Camera.



**2016 Jeep Grand Cherokee 3.0 CRD Overland, WP65 FWD, Blue, 9,200 miles, £34,450.** Panoramic Sunroof, SmartTouch Nav, Heated Seats, DAB, Park Sense Front/Rear Assist, Cruise, Hill Start Assist.



**2016 Jeep Grand Cherokee 3.0 CRD Overland, VE65 ZYT, Billet Silver, 8,500 miles, £35,950.** Leather, Heated Seats, Parking Aid, Cruise, Satnav, Sunroof, Air Con, Alarm, Polished Alloys.



## CLARKSON FALLS HEAD OVER HEELS IN LOVE WITH GIULIA



### MOTOR GROUP

A couple of weeks ago, TV car guru **Jeremy Clarkson** wrote a review in the Sunday Times of the newest addition to the Alfa family – the All-New Alfa Romeo Giulia. He lavished praise on the new sports saloon, saying that he has been waiting three decades for an Italian beauty like this.

“This car, this four-door saloon, which is priced to take on BMW’s 155mph M3, has a top speed of 191mph. That’s possible because of the Alfa’s smooth and magnificently sonorous 2.9-litre V6 turbo engine.”

Its 503bhp delivers performance which, in Clarkson’s words, means that “you need to be careful when you are fishing, because, God this car is quick.” Indeed, compared to one of its main rivals, the BMW M3 which has 425bhp, this Italian machine is a real roadrunner.

Clarkson adds that the All-New Alfa Romeo Giulia is “an absolute joy to ride. The steering is fast – there are only two turns lock-to-lock, which means you need almost no input at all to go round a roundabout. And on a sweeping A-road you can steer, really, by thought.”

Clarkson even compares the All-New Alfa Romeo Giulia to the Ferrari 485 Speciale; “It’s not just the big flappy paddles that are fixed to the column, as they should be, or the moving spoiler at the front; it’s the whole DNA of the car. If Ferrari made a mid-sized, four-door car, you suspect it would feel and go exactly like this”.

The Alfa Romeo Giulia has also been acclaimed for its gorgeous lines and comfort. “It’s so comfortable,” said Clarkson, “that after a three-hour schlep to Wales, I got out – after a bit of a struggle, I admit – and felt as though I’d just popped to the shops.”

“What I’m saying here, in this straight, no-cocking-about road test, is that Alfa Romeo has made a car dynamically better than the BMW. And it has. It really has. This is Iceland beating England. And I couldn’t be more pleased.”

● Prices for the All-New Alfa Romeo Giulia start at £29,180 for the 200hp 2.0 Petrol Turbo model, and £30,750 for the Giulia Super 2.2 JTDM-2 150hp diesel.

There are five trim levels and 13 exterior colour options, with a choice of four engines.

Best of all, it’s at T H WHITE Fiat Group Brand Centre in Swindon NOW, so come down to our showroom or visit our website at [www.motors.thwhite.co.uk](http://www.motors.thwhite.co.uk) to take a look and book a test drive.

## CASE CONSTRUCTION

## DIG THIS!

Grab a real deal and reach your full potential...



**CX18 – £238 monthly**



**CX26 – £321 monthly**



**CX50 – £519 monthly**



**CX80 – £910 monthly**



**MT1135 – £792 monthly**



**MT625 – £603 monthly**

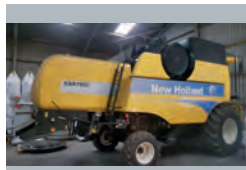
## T H WHITE CONSTRUCTION

While stocks last... Call us today on 01672 512328

- Three year lease
- No Deposit
- No upfront VAT payment
- 0% finance available
- Extra hours plan available
- Warranty and Service Plan available (at extra cost)

- All prices exclude VAT and are based on contract lease over 3 years and 500hrs per annum usage.
- Normal manufacturer and T H WHITE terms and conditions apply.

## BIG NAMES IN USED EQUIPMENT



2011 New Holland CSX 7050 Combine, 20ft header, 585 hrs, exceptional, recently serviced **£85,000 AT**



2009 Massey Ferguson Centora combine harvester, 22ft header **£54,000 AT**



2012 New Holland BB9080 c/w fork feeder, tandem axle, std & partial bale eject, 18,500 bales **£45,000 BW**



2011 New Holland BB9060 Packer Cutter Baler **£35,000 AT**



2009 Massey Ferguson 2150 Square Baler, low bale count, immaculate condition **£28,500 AT**



2012 New Holland BB6090 Crop Cutter, fixed O2 tyres, hydraulic reverse, 7500 bales, excellent **£9,600 RL**



2013 New Holland T7.250, front linkage, weights, 1040 hrs, 50kph, excellent condition **£50,000 RM**



2012 New Holland T6050, 50kph, new tyres, 3,350 hrs **£32,500 BW**



2011 New Holland T6030, 50kph, c/w new tyres, loader brackets, 3,400 hours **£31,500 BW**



2014 Massey Ferguson 7620, front linkage and PTO, 50 kph, 2,100 hrs **£58,500 AT**



2013 Case IH Puma CVX200, front linkage, 50kph with air, Michelin 650-42 tyres **£36,500 NN**



2011 Case IH Maxxum 140 4wd, 3675 hrs, air seat A, air con, 40kph, hyd push back hitch **£32,000 SC**



2013 Manitou MLT 627, Manitou hyd headstock, aircon, 24in tyres 50%, 1650 hrs **£31,250 PC**



2013 Manitou MLA629 c/w new tyres **£29,000 BW**



2012 MANITOU MLT625 75H, new Manitou headstock, hydrostatic, tyres 35%, 2,900 hrs **£24,000 JW**



2011 Claas Scorpion 6030 CP, 4530 hours, 80% tyres **£25,500 RL**



Ex-Demo Vaderstad Tempo 8 Precision Maize Drill, seed meters, seed sensors and control-station **£44,000 PC**



2011 VADERSTAD Rexius Twin 4.5m Press, c/w levelling boards, raptor tines, VGC **£28,250 RL**



2012 Kuhn GA7501 Twin Rotor Rake, trailed model 6.85-7.45m c/w 3D axles **£8,500 AT**



Opico Grain Dryer, 12 tonne Eco, Diesel/Kerosene, PTO, twin gravity discharge **£25,600 AT**

Sales Hotline: **01373 465941** (Mon-Fri 08.00-17.00) Out of hours: **07710 985957**

New: [www.thwhite.co.uk](http://www.thwhite.co.uk) Used: [www.thwhiteagriculture.co.uk](http://www.thwhiteagriculture.co.uk)

### FORAGE HARVESTER/BALER

- 2010 New Holland FR9060 Forage Harvester, 4wd **£85,000 AT**  
 2009 New Holland BB950 Baler, 39,000 Bales **£32,500 AT**

### MACHINERY

- 2008 Vaderstad RDA400 4.0m Drill, 4,900 hectares, good condition **£12,500 RL**  
 2004 Simba Horsch 4 CO Drill, good condition **£8,000 AD**  
 2014 Spreadwise Industrial 6 Reeler, good condition **£4,995 BG**  
 Vaderstad RDA400 4.8m Drill **£8,500 AT**  
 2014, Marshall 1800 gallon tanker 55 x 22.5 tyres, fully opening back door and mud guards **£5,875 BG**

**RB Ray Bennett 07710 985957**  
**PC Paul Churches 07702 724308**  
**SC Stuart Crook 07831 249489**  
**AD Andy Daffurn 07860 331023**  
**CD Colin Davies 07860 401211**

- 2009, HeVa 7.5m rollers, 560mm rings **£5,450 RL**  
 2014 Spreadwise Industrial 6 Reeler, good condition **£4,995 BG**  
 Dowdeswell DP7D2 Plough, 5 furrow shear bolt, rear discs, press arm **£1,750 PC**

### TRACTORS

- 2013 New Holland T8420 **£82,000 AT**  
 2013 Fendt 724 Profi, 3,000 hrs **£65,000 AT**  
 2012 John Deere 6830, 50k, 2,600 hrs **£35,000 AT**  
 2013 Claas Arion 430, loader **£25,500 AT**

### TRAILER

- Indispension 11' x 5'8" plant trailer, new bed with floor fixings, spare wheel & drop ramps **£1,100 SC**

**RD Rhodri Davies 07775 003460**  
**BG Bob Gallop 07831 883734**  
**MH Matt Hooper 07824 607087**  
**SK Simon Knight 07860 712963**  
**RL Ryan Lanfear 07769 248602**

### RTV/MOWERS

- 2011 Kubota 900 RTV, 1 owner, 873 hrs, 4x4 diesel, hydraulic tipping bed, radio, heater, service history, VGC **£7,500 SK**  
 Countax K18/50 liquid cooled hydrostatic ride-on mower, 50in deck, brush collector, electric lift, electric dump **£2,250 SK**  
 John Deere X304 hydrostatic four wheel steer ride on mower, 109 hrs, 42in cutting deck with spare and 42in mulching deck, VGC **£2,200 SK**

**NN Nick Norman 07850 301575**  
**RM Richard Morgan 07831 351379**  
**AT Andy Taylor 07831 255811**  
**BW Ben Willcox 07826 917955**  
**JW Joe Woolley 07818 077591**

All items offered are subject to remaining unsold. Prices shown do not include VAT.