



AirWash Plus helps organic dairy farm



Historic golf club gets state-of-the-art mower



Is it the Batmobile? No, it's a Renegade

PLUS extensive choice of quality used equipment, machinery and vehicles...

- AGRICULTURE
- PROJECTS
- GROUND CARE
- DAIRY
- COUNTRY STORE
- TRAILER CENTRE
- LORRY CRANES
- CONSTRUCTION
- MOTOR GROUP
- ENERGY, FIRE & SECURITY
- ONLINE STORE
- MACHINERY IMPORTS



PROJECTS

HARVEST PROJECTS TAKE SHAPE

The T H WHITE Projects Division is currently making excellent progress with three new on-farm grain drying and storage installations which are being constructed in readiness for the forthcoming cereal harvest.

With the feasibility study complete, planning approved and the package solution agreed with the client in each location, T H WHITE Projects has progressed to the design and construction phase with the ground being cleared and civil works established. The buildings started to take shape during March and April.

Forest of Bere Estate

This 3,000 tonne grain store near Stockbridge in Hampshire is at an advanced stage with the groundworks and building nearing completion on the Forest of Bere Estate. The 60 x 25m structure with a central dividing wall and two 750 tonne bunkers on either side, will shortly be ready for the hardwood flooring and drying system to be installed.

As well as the new grain store, T H WHITE Projects is constructing a general purpose building to serve the operational aspects on the Estate.

The two substantial structures with a juniper green clad finish are due for final commissioning and hand over in June.

Cobham Farms

Excavation and ground preparation have commenced for a new 2,500 tonne grain Store for

Cobham Farms, near Salisbury in Wiltshire.

With erection of the steelwork for the building frame underway, the project is on course for completion in July 2016. The store comprises a combination a timber drying floor across 50 per cent of the building, with two bunkers on either side. to store dry grain.

Featuring a finished colour of olive green, this farm investment promises to be an excellent operational asset.

Continued page 2 >>

Top: Construction under way at Forest of Bere Estate with the structure nearing completion (inset).

Below: The steelwork goes up for the 2,500 tonne grain store at Cobham Farms.



News and information from the T H WHITE Group

T H WHITE GROUP

HARVEST PROJECTS TAKE SHAPE

Continued from front page



On-track for handover at North Hill Farm. The olive green cladding harmonises with the landscape.

North Hill Farm

Between the valleys of the Nadder and Wylde Rivers, close by Grovely Wood, is North Hill Farm. As part of the Wilton Estate, it is here that a new 2,500 tonne capacity grain store is reaching an advanced stage of construction under the design and contract management of the T H WHITE Projects Division.

The building, which has a 48 x 28m floor area, also has a central dividing wall with two hardwood drying floor areas on one side and a large storage area for dry grain on the other.

The olive green cladding blends well into the landscape and, as depicted on the site photograph, the building is clearly on track for completion and hand-over during June.

T H WHITE Projects specialises in grain storage and handling solutions of all sizes, from smaller farm installations to commercial bulk facilities, taking each project from conception to completion. If you have a scheme you would like to talk about, please do contact us on 01380 723040.

MOTOR GROUP

EXCITING NEW CAR OFFERS



We are pleased to announce our brand new Fiat offers across the whole range. Spring is here and the new season is the perfect time to update your car. Our tempting low rate and 0% APR representative offers* include the all-time favourite Fiat 500 with great features, such as a three dimensional patterned front grille and a 5-inch touchscreen radio and the classic Fiat Panda from only £9,510 on the road. Our great new deals also include the class-leading supermini Alfa Mito with 0% APR Representative and the superior off-road Jeep Wrangler with very tempting low rate finance options.

To find out more, please contact the Fiat Group Brand Centre on 01793 393519 or visit motors.thwhite.co.uk.

*Terms and conditions apply. Deposit required.

GROUND CARE



HISTORIC KINGSDOWN EMBRACES LATEST WIDE AREA ROTARY MOWER

Founded in 1880, Kingsdown Golf Club has outlived all but 12 English Clubs and it is the second oldest Golf Club in the West of England, as well as being the oldest Club in Wiltshire.

The club is recognised for the quality of its course and the website 'Top 100 Golf Courses' has declared it 'Wiltshire's Best Members Course'. Excellent drainage makes play possible all year round and the players' expectations are always high. No pressure then on the man responsible for keeping it all in top condition, head greenkeeper Mark Ford.

Of the Club's 140 acres, around 65 acres are classified as semi-rough, including the areas around the driving range. Traditionally, the club has used just one machine to maintain those areas, which until recently was a Jacobsen HR6010. "We've always found Jacobsen machines to be very reliable," said Mark. Before the HR6010 we had an HR5111, so when the time came for a new machine we got in touch with Stuart Fry at T H WHITE. What we hadn't expected was that the latest Jacobsen wide area rotary mower would be such a tremendous step up from what we had before."

The machine that so impressed Mark

was the Jacobsen MP493, now recently re-branded the HR500, which has been redesigned from the ground up. Built with high strength steel throughout, the overall weight has been reduced to minimise soil impact and to make best use of available power. The wing decks now fold within the width of the front deck and as well as being highly manoeuvrable they deliver the widest width cut in their class. There's hydraulic drive to each blade and 4wd is even available in reverse. Mark made his recommendation and the Club went ahead to purchase the HR500.

The morning we went to see Mark it was the start of his first day out with the new machine, but it was easy to see he was at home in the driving seat as it made light work of mowing the undulating semi-rough areas. "The power, comfort, quality and speed of cut is outstanding," he said. "Yet again, we have a superb Jacobsen machine, but even though the old HR6010 is getting on a bit we are still using it on 4-inch cuts. These mowers truly are cost effective."

For more information on the Jacobsen range, or to arrange a demonstration, please call your local sales representative.

AGRICULTURE

OPEN FARM SUNDAY

This year sees the eleventh Open Farm Sunday which will take place on 5 June. Since the first event in 2006, more than 1,000 farmers across the UK have opened their gates and welcomed people onto their farm for one Sunday each year. It's a fantastic opportunity for everyone, young and old, to discover at first hand what it means to be a farmer and find out more about the work they do in producing our food and managing the countryside.

Traditionally T H WHITE has supported a local farmer and this year we will be taking a range of agricultural equipment to Butler Bros at Avebury. So if you have ever wondered what it's like in the driving seat of a tractor, or how modern farm machinery works, head over to Manor Farm, Avebury Trusloe, Marlborough, Wiltshire, SN8 1QY on 5 June. Many other farms participating in the event can also be found on the website farmsunday.org

GROUND CARE

SEE THE LATEST



This year's Turf Maintenance Live event will take place on 1 and 2 June at Twickenham. The latest technology and practices in turf maintenance will be

demonstrated at this 'must see' show for all groundcare professionals. It's free to attend but pre-registration is essential, either at www.turfmaintenancelive.com or by calling 0141 814 3366. Gates open at 10am each day with bacon rolls and coffee on arrival and lunch served at 12.30. It's at Cardinal Vaughan Memorial School Playing Fields, c/o Twickenham Stadium North car park, Gate D (adjacent to 30 Rugby Road), Twickenham, TW1 1DG.

GROUP

WHITE'S WORLD

White's World is published monthly by T H WHITE. To contact our Divisions, call:

Agriculture Knockdown	01454 238181
Marlborough	01672 512328
Frome	01373 465941
Huntley	01452 830303
Toddington	01242 620211
Devizes	01380 722381
Andoversford	01451 850363
Stockbridge	01264 811260

Projects	01380 723040
-----------------	---------------------

Groundcare Knockdown	01454 238181
Reading	0118 976 0088
Redditch	01527 597770
Stockbridge	01264 811260

Dairy	Frome	01373 465941
	Huntley	01452 830303

Country Store	01672 518408
----------------------	---------------------

Trailer Centre	0118 976 0088
-----------------------	----------------------

Lorry Cranes	01380 722381
---------------------	---------------------

Construction	01672 512328
---------------------	---------------------

Motor Group	01793 680480
--------------------	---------------------

Energy, Fire & Security	01380 726656
------------------------------------	---------------------

Online Store	www.thwhitestore.co.uk
---------------------	---------------------------------------------------------------------------

Machinery Imports	01264 811260
--------------------------	---------------------

www.thwhite.co.uk
 head_office@thwhite.co.uk
 © T H WHITE Group 2016 E&OE
 Nursted Road Devizes Wilts SN10 3EA

AGRICULTURE



AWESOME AUTOMATICS

When you really need power and torque from your ATV, then you need look no further than the incredible Honda TRX500FA Foreman and Kawasaki Brute Force 750. Both these advanced ATVs are easy to ride, automatic machines with power steering as standard.

The Honda TRX500 features a clever Dual Clutch Transmission (DCT) that can be used in either full automatic or electric change mode, where at the touch of a button any one of five gears can be selected. Additionally it has low range, diff lock when in four wheel drive, 600kg of towing ability and independent rear suspension. With exceptional rider

comfort, this is a very capable ATV for all conditions and applications. From £7,790 plus VAT.

The V-twin, liquid cooled Kawasaki 750 Brute Force delivers more than enough power for towing and tackling tough terrain. Driven by a traditional Constantly Variable Transmission (CVT) with engine braking, it features both two and four wheel drive, diff lock, low range and independent suspension. Available in black, white or camo. From £7,629 plus VAT.

For further information please contact T H WHITE's ATV specialists Tim Rochfort on 07973 911934 or Simon Knight on 07860 712963.

TOTAL CROP PACKAGE SOLUTION



Quality product • Price-competitive • Interest-free plan
CONTACT YOUR AGRICULTURAL PARTS DEPARTMENT

T H WHITE AGRICULTURE

ARE YOU TALKING TO US?

COUNTRY STORE

NEW RULES ON RODENTICIDES

The way we currently use rodenticides often leads to widespread contamination of UK wildlife. We know that a high proportion of some bird populations, including barn owls, kestrels, sparrowhawks and red kites, and many mammals, such as stoats, weasels, foxes, hedgehogs and polecats, carry residues of these substances in their bodies.

The Health and Safety Executive (HSE), has said that in future it will only authorise rodenticides for use outside buildings if a programme of rodenticide stewardship is put in place, and farmers are not exempt from this.

As a result, from 1 April this year, packs of rodenticide have been appearing with new 'stewardship conditions' labels that are only available to professionals. When you purchase these new packs from T H WHITE or any other supplier you will be asked for proof of competence, which can be provided by the possession of a certificate showing that you have taken a training course approved by the Campaign for Responsible Rodenticide Use (CRRU) and passed the necessary exam. You may also be asked for proof of identity, so that the responsible sales person can be sure that the person they are supplying is the one who took the course and passed the exam. A list of approved training and certifications is on the CRRU website, www.thinkwildlife.org/list-of-training-and-certification.

Until September, products with old, pre-stewardship labels will continue to be on sale until stocks run out, and can continue to be used for some time after that. The detailed timeline for the introduction of the new products and the phase-out of the old ones is also on the CRRU website, www.thinkwildlife.org/crrudownloads/uk-rodenticide-stewardship-timelines.

This is important because unless the new stewardship regime is successful, HSE will consider further restrictions on who can use rodenticides and where they can be applied. One such restriction would be to permit use only indoors. That would seriously affect our ability to control rodents, especially rats, quickly and easily.



DAIRY

CONTROLLING THE CELL COUNTS

Two very different applications of the AirWash Plus automatic dip and rinse system have demonstrated clear benefits...



NESTON PARK FARM

"In organic dairy farming it's important to address health issues before they even arise." So says Paul Redmore, Farm Manager at Neston Park Farm in Wiltshire where the 300-strong Jersey herd produces top quality milk which is processed locally, mostly into cream and butter, to be sold under the Ivy House Farm label in many premier stores including Fortnum & Masons, Harrods and Selfridges.

The Neston estate has been in the hands of the Fuller family – famous for their participation in the Fuller, Smith and Turner brewery in London – since 1790 when John Fuller built Neston House there. In 1910 John Michael Fuller MP was created a baronet and, in 1998, the present owner Sir James Fuller became the fourth baronet. Like generations before him, he has continued to develop the Home Farm, which in 1999 was certified organic by the Soil Association.

Today, cereals grown organically on

the 1,400-acre farm are used to feed the dairy herd, while beef cattle and lambs are also reared on Neston's pastures.

The economics of organic farming led to the decision in 2014 to double the size of the dairy herd, which in turn placed extra demands on the milking parlour. "We knew we would have to install a larger parlour in due course," said Paul, "but in the short term we needed to maximise efficiency as well as being scrupulous in the control of cleanliness and potential cross-infection.

"That got us thinking about installing a modern dip and rinse system, so we went to the dairy team at T H WHITE. They showed us the AirWash Plus system which not only has an outstanding track record in improving hygiene, but uniquely can be fitted to any cluster with any liner. An added bonus for us was the ability to transfer the system from the parlour we had then to our new parlour when it was ready."

So it was, two years ago, that AirWash Plus was installed in the old milking parlour at Neston Park Farm. "The difference was almost immediate; cell counts dropped from almost 300 to between 150 and 180 and the incidence of mastitis was greatly reduced as well. Not only that, but we saved about 15 minutes on every milking by not having to dip the teats manually – a genuine gain."

Earlier this year T H WHITE completed the installation of a brand new 24/24 DeLaval milking parlour at Neston with a full Delpo computer system and smaller stalls to suit the Jersey cows. As planned, the AirWash Plus equipment was transferred from the old parlour and expanded to serve the additional clusters.



Paul Redmore (left) with Gary Grant from T H WHITE in the new parlour at Neston Park Farm.

"The new parlour is superb – very open and airy which makes the cows much more relaxed," Paul added. "I'm really impressed with the job T H WHITE did, everything was correct with no corner cutting; all-in-all a nice, tidy job."

While on-site, T H WHITE also installed



TEMPLE HOUSE FARM

25 miles south-west of Neston Park is Temple House Farm, on the Mendips near Shepton Mallet. The Reakes family have been farming here since 1929 and Simon and Ben Reakes are the fourth generation, working today with their father Roger who still milks every afternoon.

They take pride in the business they have built up and the high standards they have always applied to managing their herd, now of 160 cows. There's not much that Roger doesn't know about the dairy business, so it's easy to imagine just how frustrating and upsetting it was when, for no obvious reason the cell counts in

48 powerful LED light clusters in the two cow sheds. With 40 per cent funding from the Countryside Productivity Scheme, these lights enable daylight hours to be artificially extended which improves milk yields – yet another way of increasing the viability of organic dairy farming.



Above: Eager cows can't wait to get to their milking stalls at Neston Park Farm. **Left:** LED lighting in Neston's cow sheds

the milk they produced were consistently high and mastitis cases on the farm were rising.

"It was a mystery," said Roger. "Hygiene in the parlour appeared to be good and we thought it must be down to an environmental factor such as the bedding conditions. We called in the vet who identified high incidences of strep uberis and we tried almost everything we could think of to get it under control over a period of about two years.

"I have to admit that I was the one who dug my heels in when it came to making fundamental changes in the way we worked. Simon had suggested quite early



Gary Grant with Roger and Simon Reakes in their spotless parlour now fitted with AirWash Plus.

on that we should think about putting in a dip and rinse system, but I couldn't see why we would need it as the dairy had good hygiene standards."

Eventually the Reakes' contacted T H WHITE who had installed their 24/24 DeLaval parlour some eight years previously and a demonstration of the AirWash Plus system was set up.

"After seeing it in action we managed to persuade dad to go for it," said Simon, "and it proved to be one of the best decisions we've ever made. Having consistently had cell counts of 200-plus, within 8-10 weeks of installing AirWash Plus they had dropped right down to 99 and are now averaging around 150. Not only that, but the number of mastitis cases were reduced by over 50 per cent.

"Our bactoscan also dropped from 30-40 and is now just 10-15 – the cluster liners really are squeaky-clean! Clearly the AirWash Plus is not only cleaning but also preventing cross-infection between animals. Using just 10ml of teat dip per cow it's economical too.

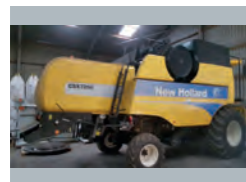
"Based on the saved cost of mastitis cases alone we expect to achieve pay-back on the AirWash Plus system in 2½ to 3 years."

Roger Reakes is the first to say the farm should have installed dip and rinse sooner, but then it's easy to be wise after the event. "Perhaps the best thing," he says, "would be to talk to other farmers you can trust. Almost everyone has been through similar problems at some time in the past and there's a tremendous knowledge base out there. We would certainly be happy to talk to any dairy farmers about the benefits of dip and rinse."

Of course, you could always talk to the T H WHITE Dairy team for advice on milking parlours and the AirWash Plus system. Just call 01373 465941, or Gary Grant on 07860 590701.



BIG NAMES IN USED EQUIPMENT



2011 New Holland CSX 7050 Combine, 20ft header, 585 hrs, exceptional, recently serviced **£85,000 AT**



2013 New Holland BB1290 Big Square Baler, bale ejector, rotor cutter, rear steer tandem axle **£POA BW**



NEW HOLLAND BB9060 Packer Cutter Baler **£35,000 AT**



New Holland BB950 Packer Cutter Baler **£23,500 AT**



Selection of T4, T5, T6 Ex-hire Tractors. Approx 200 hrs, 0% finance and warranty. **£POA BW**



2012 New Holland T7.250 Power Cmd, c/w front linkage, PTO, sidewinder, 50kph **£46,000 RL**



2012 NH T7.260 Power Command, front linkage, full TRK guidance, 710/60R42 wheels at 30%. **£44,000 RL**



2011 New Holland T6030, 50kph, c/w new tyres, loader brackets **£34,500 BW**



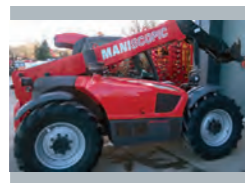
2012 New Holland T7.200 Range Command, 40kph, 4560 hrs **£32,000 RL**



2001, NH TM165, 6675hrs, front suspension, front lkg, cab suspension, powershift transmission **£17,000 JW**



2014 Massey Ferguson 7620, c/w front linkage and PTO, 50 kph, 2,100 hrs **£58,500 AT**



2011 Manitou MLT 634, Manitou headstock, 4,500 hrs **£28,000 RD**



2013 Manitou MLT 627, Manitou hyd headstock, aircon, 24in tyres 50%, 1650 hrs **£31,250 PC**



2011 Manitou MLT634T 120 LSU PS, Manitou headstock, 3400kg lift, lift height 6m, 4523 hrs **£27,000 RD**



2012 MANITOU MLT625 75H, new Manitou headstock, hydrostatic, tyres 35%, 2,900 hrs **£25,000 JW**



2011 VADERSTAD Rexus Twin 4.5m Press, c/w levelling boards, raptor tines, VGC **£30,000 RL**



2009 VADERSTAD RDA400S Drill, 3400 hrs **£25,000 RD**



2013, Kuhn Megant 500QS 5m Drill, 13.9cm spacing, levelling boards, load sensing blower drive **£15,000 PC**



2004 Simba Horsch 4 CO Drill, good condition **£9,000 AD**



2014 Hi-Spec 2500 gallon Tanker, Trelleborg tyres, internal mixer and top fill **£11,995 BG**

Sales Hotline: **01373 465941** (Mon-Fri 08.00-17.00) Out of hours: **07710 985957**

New: www.thwhite.co.uk Used: www.thwhiteagriculture.co.uk

FORAGE/COMBINE HARVESTERS

New Holland CX8070	£140,000 AT
New Holland CX8040	£125,000 AT
New Holland CX8030	£95,000 AT
New Holland CX880, 25ft varifeed	£68,000 AT
John Deere 2260	£25,000 AT

TRACTORS

2013 New Holland T7235 Power Command, front linkage & PTO	£50,000 AT
-----------------------------------------------------------	-------------------

New Holland T235 Power Command, front linkage	£48,000 AT
2014 New Holland T6.140 1000 hrs approx, new tyres	£37,000 MH
2010 Massey Ferguson 6480	£34,000 AT

MACHINERY

2008 Gaspardo 12 row Maize Drill	£9,995 AT
Vaderstad RDA400 4.8m Drill	£8,500 AT

2010 Kuhn Axis 40.1W, weighing system, 1800 ltr extensions, 18-28m S4 discs, headland boarder system	£5,800 JW
2014 Spreadwise Industrial 6 Reeler, good condition	£4,995 BG
2009 First used 2010, Lely 240 MC Splendimo Mower Condition, very little use, very nice condition, nylon tines, dry stored, ready to go	£3,500 MH
Kverneland Accord DS-S 4m Drill	£1,500 RD

RB Ray Bennett	07710 985957
PC Paul Churches	07702 724308
SC Stuart Crook	07831 249489
AD Andy Daffurn	07860 331023
CD Colin Davies	07860 401211
RD Rhodri Davies	07775 003460

BG Bob Gallop	07831 883734
MH Matt Hooper	07824 607087
SK Simon Knight	07860 712963
RL Ryan Lanfear	07769 248602
NN Nick Norman	07850 301575

RM Richard Morgan	07831 351379
SP Simon Pratt	07909 895502
AT Andy Taylor	07831 255811
BW Ben Willcox	07826 917955
JW Joe Woolley	07818 077591

All items offered are subject to remaining unsold. Prices shown do not include VAT

GROUND CARE

A GREAT PITCH FOR ONE OF BATH'S TOP SCHOOLS



Although the history of King Edward's School in Bath goes back 463 years, the 17-acre playing fields at Bathampton were created 90 years ago to cater for the growing sporting acumen of the school.

The setting, close to the River Avon and bordered by the Cotswolds on one side and the Mendips on the other, is idyllic. Today the fields are maintained by head groundsman Dave Perryman and his colleague Simon Freear, whose traditional and simple approach nevertheless keep the grounds looking immaculate and ready for

sporting action through the seasons. Controlling costs is always an important aspect at a school, where every penny has to produce the best results and deliver value. Dave Perryman explains: "We have to make sure that the



Above: Jacobsen MH5 mounted gang mower. Left: The Iseki TG5470 is useful for many tasks.

equipment we buy is versatile so that we can carry out a wide range of tasks. For that reason we have avoided specialist dedicated mowers, preferring instead to use a small tractor in conjunction with a mower.

"We certainly get a lot of use out of our equipment and when we recently needed to change our tractor we decided to go for a new mower at the same time."

TH WHITE has been supplying groundcare equipment to King Edward's for many years, so sales representative Stuart Fry recommended an ex-demonstration Iseki TG5470 tractor with a Jacobsen MH5 mounted gang mower, which the school purchased.

"It's a great combination," said Dave. "Our old mower was a trailed gang but the new package is much more compact and manoeuvrable. The floating heads are also very effective on the contours around the edge of the fields. Simple, but very efficient!"

Simon is pleased too: "The Iseki tractor has a proper cab, so no more freezing for me in the wind and rain! Apart from mowing we use it for all sorts of other jobs too, so it's the perfect solution."

To discuss any kind of groundcare equipment, or to arrange a demonstration, please call your local sales representative.

MEET US AT...

- Badminton Horse Trials** Badminton, 4-8 May, **AGRICULTURE**
- Somerset YFC Rally** South Wick Farm, South Wick Road, Mark, Somerset, 14 May, **AGRICULTURE**
- Tipex** Harrogate, 2-4 June, **LORRY CRANES**
- Open Farm Sunday** Butler Bros, Avebury, 5 June, **AGRICULTURE**
- Cereals** Chrishall Grange, Near Duxford, Cambridgeshire, 15-16 June, **PROJECTS**
- Facilities Show** London Excel, 21-23 June, **ENERGY, FIRE & SECURITY**
- Southwest Expo** Steam Museum Swindon, 30 June, **ENERGY, FIRE & SECURITY**

MOTOR GROUP



JEEP'S DRAMATIC DARK KNIGHT

Forget about the Batmobile, Jeep's new Renegade stole all the attention with its 'Dawn of Justice' themed limited edition.

The leading brand has made available just 500 examples of its best-selling small SUV to coincide with the release of the blockbuster film 'Batman vs Superman: Dawn of Justice'.

The new Renegade Limited edition is a stunning, cleverly designed machine with the latest tech features from Jeep and a beautifully crafted finish. Its dramatic appearance is complemented by stunning Granite Crystal, Carbon Black or Colorado Red livery and a host of polished black painted accents, such as unique 18-inch alloy wheels, fog lamp and rear light cluster surrounds, black roof bars, the seven-slot grille, and unique 'Dawn of Justice' badging.

We aren't sure how Batman feels in his Batmobile, but we are sure you will feel more than super in the new Renegade's interior which features a leather steering wheel, exclusive Dawn of Justice black cloth seats, black air vent and speaker bezels, DAB digital radio with Bluetooth and satnav, a six-speaker audio system, and UConnect Live services.

A limited number of options are also available further to enhance the Renegade Dawn of Justice, including tinted privacy glass, electric panoramic sunroof, heated front seats, heated steering wheel, towing pack, and regular size spare wheel.

For more information about this model or any vehicle from the Jeep range, contact us on 01792 224700 or visit motors.thwhite.co.uk.



2015 Fiat Panda 1.2 POP, CF15 NBX, White, 5,000 miles, £6,750. Start/Stop, Electric Front Windows, Radio/CD/MP3, Hill Holder, Tyre Pressure Monitoring System, One Owner.



2015 Fiat 500 0.9 Lounge, VK65 HHA, Metallic Avantgarde Bordeaux, 856 miles, £12,950. Auto Start/Stop, 5in Touchscreen, DAB Audio, 15in Alloy Wheels, Electric Front Windows, Hill Holder.



2015 Fiat 500C 1.2 S, WR65 EXE, Metallic Electronica Blue, 10 miles, £10,950. Convertible, Auto Climate Control, Start/Stop, 16in Alloy Wheels, Electric Windows, Hill Holder, Radio/CD/MP3.



2014 Fiat 500 S, WM64 UXR, Yellow, 15,327 miles, £7,450 (was £7,950). Auto Climate Control, Sports Kit, Parking Sensor, Front Fog Lights, Start/Stop, Radio/CD/MP3, Heat Insulated Glass, EBD.



2015 Fiat 500 1.2 Lounge, VK65 MRY, Grey, 2,593 miles, £10,450. Ex-Demonstrator, 15in Alloy Wheels, Start/Stop, Electric Front Windows, Hill Holder, Radio with USB and Aux-in.



2015 Fiat 500L 1.3 MultiJet Trekking, VK65 OBB, White, 5,000 miles, £15,495. Cruise, Air Conditioning, 5in Touchscreen, 17in Trekking Alloy Wheels, Bluetooth, Electric Windows, Hill Holder.



2016 Fiat 500L 1.3 MultiJet Lounge, VA65 UAC, Red, 10 miles, £16,950. Electric Sunroof, 5in Touchscreen, Dualzone Climate Control, Rain Sensor, Auto Lights, Cruise, Start/Stop, Front Fogs.



2015 Fiat 500X 1.4 MultiAir II Cross DDCT, VK65 OBC, Blue, 3,850 miles, £16,995. Auto Climate Control, Cruise, Parking Sensors, EcoLeather/Fabric, Electric Windows, Uconnect Radio, TPMS.



2015 Fiat 500X 1.6 MultiJet II Cross, VN15 HNH, Metallic Grey, 5,600 miles, £14,950 (was £16,950). Auto Climate Control, Cruise, Electric Door Mirrors, 17in Alloy Wheels, Uconnect Radio.



2016 Fiat Punto 1.2 8v Easy+, VA65 UAC, Blue, 10 miles, £8,450. Pre-Reg Fantastic Saving, Auto Climate Control, Sportline Alloys, TomTom Navigation, Electric Front Windows, Radio/CD/MP3.



2014 Alfa Romeo MiTo 1.6 JTDM-2 Distinctive, VN64 UJE, White, 6,000 miles, £11,950. Ex-Demo, One-Touch Electric Windows, Cruise, Parking Sensors, Heated Electric Door Mirrors, Blue & Me.



2014 Alfa Romeo MiTo 0.9 TB TwinAir Sportiva, VN64 UJC, Etna Black, 4,000 miles, £11,450. 18in Alloys, Cruise Sports Pedals, Dark Tinted Glass, Front Fogs, Chrome Tailpipe, Red Callipers.



2015 Alfa Romeo MiTo 1.6 JTDM-2 Distinctive, VK64 WEH, Alfa Red, 5,000 miles, £10,950. Cruise, Blue & Me with Voice Recognition, Electric Windows, Parking Sensor, Fog Lights.



2015 Alfa Romeo Giulietta 1.6 JTDM-2 Progression, VF15 VEA, Blue, 4,000 miles, £15,850. Climate Control, 16in 5 Double-Spoke Alloy Wheels, Uconnect Infotainment, Electric Windows.



2015 Alfa Romeo Giulietta 2.0 JTDM-2 Sprint Speciale, VK65 SMU, Alfa Red, 6,200 miles, £18,950. Cloth/Alcantara, Dualzone Climate Control, 17in Sprint Speciale Dark Finish Alloys.



2015 Alfa Romeo 4C Spider, Metallic Rosso Competizione, £65,550. Brand New - Unregistered, Dark Finish 5-hole Alloy Wheels, Red Painted Brake Callipers, Leather Dash with Red Stitching.



2014 Abarth 500 1.4 Turismo, VA15 WUR, Bicolour, 6,000 miles, £15,950. Red Full Leather Interior, Auto Climate Control, Parking Sensor, Diamond-Finish Alloys, Electric Windows, Hill Holder.



2015 Abarth 500 1.4 T-Jet Yamaha Factory Racing, VN65 MZW, Gara White, 3,653 miles, £14,950. Ex-Demo, 17in Formula Matt Black Finish Alloys, Monza Exhaust, Tinted Windows, Side Stripes.



2014 Abarth 500 1.4 T-Jet, VU64 ZCK, Grey, 4,500 miles, £11,950. 17in 10-Spoke Diamond Finish Alloys, Electric Glass Sunroof, Auto Climate Control, Blue & Me, Side Stripes, Black Gloss Mirrors.



2016 Jeep Renegade 2.0 MultiJet II Limited, VK216 SFE, Moave Sand, 25 miles, £22,450. Save £4,500! Cruise, Satnav, Air Conditioning, 18in Alloys, Roof Rails, Black Roof, Privacy Glass.



2016 Jeep Renegade 1.4 MultiAir II Limited, VK16 SEY, Anvil Grey, 30 miles, £19,950. Save £4,495! Satnav, Touchscreen, Air Conditioning, 18in Alloys, Power Windows, Privacy Glass, Leather.



2015 Jeep Cherokee 2.0 MultiJet II Longitude Plus, VN15 UTZ, Silver, 6,250 miles, £18,950. Auto Air Conditioning, 17in Alloy Wheels, Rain Sensor, Thatcham Alarm, Hill Start Assist, Cruise.



2015 Jeep Cherokee M-Jet Longitude Plus, VA64 ZVZ, Granite Metallic, 11,000 miles, £17,950. Auto Dual Zone Climate Control, Cruise, 17in Alloys, Park Assist with Stop, Roof Rails, ESP.



2015 Jeep Grand Cherokee 3.0 CRD Overland, VK65 SMV, Grey, 7,000 miles, £35,950. Leather, Heated Seats, Rain Sensor, Front/Rear Cameras, Climate Control, DAB Audio, Satnav, Hill Holder.



2014 Jeep Grand Cherokee 3.0 CRD Overland, WM64 UMS, Red, 8,000 miles, £31,500. Park Assist, Nappa Leather Ventilated Seats, Panoramic Sunroof, Climate Control, Rear View Camera.

