



**Wraps off the Alfa Romeo BTCC challenger**



**New milking parlour will 'future-proof' farm**



**Sorting process improves crop**

**PLUS** extensive choice of quality used equipment, machinery and vehicles...

- AGRICULTURE
- PROJECTS
- GROUND CARE
- DAIRY
- COUNTRY STORE
- TRAILER CENTRE
- LORRY CRANES
- CONSTRUCTION
- MOTOR GROUP
- ENERGY, FIRE & SECURITY
- ONLINE STORE
- MACHINERY IMPORTS



## LORRY CRANES

### SEVEN BARRIER RIGS FOR KIER HIGHWAYS

As the official national distributor of Palfinger and Epsilon cranes and equipment, T H WHITE Lorry Cranes has a strong reputation for installing premium products on a wide range of vehicle chassis.

As well as being the UK's largest lorry crane supplier, T H WHITE Lorry Cranes also offers in-house body-building, assembly to chassis and servicing, backed up by customer service that has attracted some of the biggest names in the industry.

For more than 15 years one of our key clients has been leading commercial vehicle contract hire company LC Vehicle Hire, to whom we have supplied Palfinger, Epsilon and Orteco equipment for their large fleet of contract hire commercial vehicles. Most recently T H WHITE has been contracted by LC Vehicle Hire, not only to install the cranes, but also to provide Orteco piling units and build the specialist bodywork required for a series of seven specialist barrier rigs. T H WHITE Lorry Cranes was delighted to hand over the first of these multi-purpose vehicles in the autumn, built to the precise specification required by Kier Highways, a sector leader in UK highways maintenance, which has placed orders for units on both 18t & 26t chassis.

The first of the new barrier rigs is built on a Mercedes Antos 2535 truck supplied by Northside Truck & Van Ltd. The on-board Palfinger PK 19.001 SLD5A boom crane is supplied with radio remote control for improved usability and safety. Its intelligent, lightweight design will accommodate high payloads with a lifting capacity of 6200kg and a maximum hydraulic outreach of 14.8m.

Designed for heavy-duty pile driving, the Orteco HD 800 truck-mounted pile driver has a hydraulic rotation system enabling operation from either side of the vehicle, as well as the ability to deliver 680 blows per minute with a 1,060 joule hammer.

These premium, powerful units are complemented by installation on a custom-built body from T H WHITE Lorry Cranes – a twin access, triple-drop-side solution with fall prevention system.

Karl Simpson, Regional Transport and Plant Manager at Kier, said: "Since taking possession of this vehicle, it has been used to carry out all the safety fence repairs and street lighting column replacements within the Highways England Area 13 ALDM Contract. It is performing beyond our expectations due to its manoeuvrability and the high payload enables the team to take all the required materials to site in one trip, saving time and money."

Mitch Barnes, LC Vehicle Hire Operations Manager – who collaborated with Kier on the specification – commented: "This vehicle – tailor-made to the customer's requirements – is a superb specialist addition to the LC fleet."

The first of the new barrier rigs was handed over by Scott Marsland, sales support officer at T H WHITE Lorry Cranes, who also provided training with the end user to ensure full understanding. All barrier

rigs are delivered with Type Approval as well as a two-year warranty on the complete rig, and a three-year warranty on the Palfinger crane.

For details of barrier rigs and many other vehicle-mounted crane and pile driver applications, contact T H WHITE Lorry Cranes on 01380 722381.



**News and information from the T H WHITE Group**

**T H WHITE GROUP**



GROUP		
<b>WHITE'S WORLD</b>		
White's World is published monthly by T H WHITE. To contact our Divisions, call:		
<b>Agriculture Knockdown</b>	<b>01454 238181</b>	
Marlborough	01672 512328	
Frome	01373 465941	
Huntley	01452 830303	
Toddington	01242 620211	
Devizes	01380 722381	
Andoversford	01451 850363	
Stockbridge	01264 811260	
Projects 01380 723040		
<b>Groundcare Knockdown</b>	<b>01454 238181</b>	
Reading	0118 976 0088	
Redditch	01527 597770	
Stockbridge	01264 811260	
<b>Dairy</b>	<b>Frome 01373 465941</b>	
	Huntley 01452 830303	
<b>Country Store</b>	<b>Marlborough 01672 518408</b>	
	Knockdown 01454 238181	
<b>Trailer Centre</b>	<b>0118 976 0088</b>	
<b>Lorry Cranes</b>	<b>01380 722381</b>	
<b>Construction</b>	<b>01672 512328</b>	
<b>Motor Group</b>	<b>01793 680480</b>	
<b>Energy, Fire &amp; Security</b>	<b>01380 726656</b>	
<b>Online Store</b>	<b>www.thwhitestore.co.uk</b>	
<b>Machinery Imports</b>	<b>01264 811260</b>	
www.thwhite.co.uk		
head_office@thwhite.co.uk		
© T H WHITE Group 2018 E&OE		
Nursted Road Devizes Wilts SN10 3EA		
01380 722381		

**WHITE'S WORLD ONLINE**  
**WHITE'S WORLD** is also available in digital form. In the digital edition we also include news, offers and invitations which may not be covered in the printed magazine. To sign up for digital updates, visit [www.thwhite.co.uk/whites-world-signup/](http://www.thwhite.co.uk/whites-world-signup/). We will send you a monthly email with links to all the top stories and offers. You will have the option to unsubscribe at any time.

## PROJECTS SORTING PROCESS IMPROVES CROP

**L F Pearce & Son has been operating its business at Moorleys Farm in Oakley, near Aylesbury in Buckinghamshire since 1938. Over that time the business has become a specialist in arable crop production.**

In 2007/8 a new grain storage facility was constructed at the farm and subsequently extended to provide an increase in storage capacity of more than 10,000 tonnes. Processing of cereals, including the drying, cleaning and dressing of crops, is then carried out on site at up to 60tph.

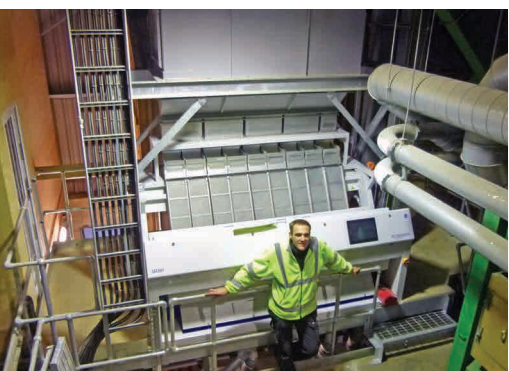
The latest investment enabled the cleaning process at Moorleys Farm to be enhanced by the addition of a 30tph colour sorter, a contract being awarded to T H WHITE Projects for the design of the new system and incorporation of it into the existing arrangement on site.

With the backing of EARD (European Agricultural Fund for Rural Development), together with LEADER, the scheme qualified for a grant funding which made it possible for the project to proceed.

The project encompassed the process design and installation of a Satake Colour Sorter, together with associated chain conveying and bucket elevating systems to ensure a functional connection to the existing equipment and interface with the on-site control system. Additionally, the steelwork, operating platform and access walkways around the new plant and machinery were installed.

Once operational, the colour sorter will make it possible to remove vomitoxin, fusarium, ergot, discoloured, damaged or bug infested grain. This will improve the quality of the plant's output, enhancing the crop value as well as avoiding costly crop penalties and additional haulage charges.

The new colour sorter also has the ability to ensure accurate admixture removal, species separation, plus bushel weight and Hagberg falling number improvement across the nine operating channels on the Satake machine.



Because the system facilitates a greater percentage of growers' crops entering the higher value food chain, it also reduces waste and increases the premiums paid to growers.

Installation and commissioning of the new colour sorter was successfully completed by T H WHITE Projects in December 2017 and handed over, ready for operation, to the delighted owner Derek Pearce who is looking forward to increasing business thanks to this latest investment.

T H WHITE Projects specialises in cereal processing and storage solutions of all sizes, from farm and estate installations to large commercial or industrial bulk facilities, taking each project from conception to completion.

Do visit our new Projects website ([www.thwhiteprojects.co.uk](http://www.thwhiteprojects.co.uk)) to gain an overview of our capabilities. If you have a scheme you would like to talk about, please do contact us on 01380 723040, or email [projects@thwhite.co.uk](mailto:projects@thwhite.co.uk).

## PLANT UPGRADES AND REPLACEMENT

**MATERIALS PROCESSING, DRYING, BULK STORAGE AFTERMARKET CUSTOMER SERVICE AND SUPPORT**

Contact us now on 01380 723040 and ask for Kevin Alnwick or send a mail to [cssprojects@thwhite.co.uk](mailto:cssprojects@thwhite.co.uk)

**If you are thinking about modernising your site operations either on intake, storage, drying or new buildings, our skilled professionals are ready to assist.**

- Free Advice
- Mechanical & Electrical
- Design & Construct

- Consultancy
- Repairs & Service
- Installation/Fabrications

- Refurbishments
- New Machinery
- Health & Safety

**GRAIN STORE EMERGENCY OUT OF HOURS HOTLINE: 07919 394602**

CALL US NOW AND BE PREPARED

## GROUP ENSURING YOU GET THE COMMUNICATIONS YOU WANT

**The explosion of online services means that it's not always easy to keep track of what you might have signed up for in the past, who holds what data about you and exactly what they are using it for. It can be extremely annoying to be bombarded with unwanted emails, telephone calls or other communications, but you still want to receive the information that is interesting or relevant to you - right? Or maybe not...**

At T H WHITE our policy has always been to maintain absolute transparency about the data we hold and what we do with it. For a start, we always keep customer data completely secure; we never sell it to third parties and we never share it with partners not involved in the supply or maintenance of equipment you may have purchased. We also honour requests not to receive marketing communications.

That places us well to implement GDPR (General Data Protection Regulation), a new piece of legislation designed to protect the privacy, security and accessibility of customer data. From 25 May this year GDPR replaces the Data Protection Act (1998) and gives people more say over what companies can do with their data.

As well as complying with GDPR, we want you to be able to decide on the communications you receive from us - or decline them altogether - so in the coming months we will be inviting

you to re-subscribe to marketing communications from the T H WHITE Group. Our preferred method of recording your subscription will be via a website where you will be able to register your permission. If you are not comfortable using a website, a member of our staff can assist you or we will ask you to sign a paper record of your permission.

So what exactly do we mean by marketing communications? Well, this monthly newsletter, White's World, is our premier marketing communication, but we also send out invitations to customer events, open days and demonstration days, speakers' evenings and special offers. We hope that the news and insights we provide, as well as the opportunity to meet others from your industry and to benefit from money-saving promotions will be something you would like to continue to receive, but the choice is yours.

Without your documented consent, we will no longer be able to send you any of these things. Marketing communications do not include important notes we may send you, such as service reminders for a piece of equipment or information about safety and legislative issues etc.

This is your chance to decide how you would like T H WHITE to communicate with you - we will not bombard you with emails or communications and remember, you will always be able to opt out at a later date.

## DAIRY MEET NIGEL ELLIS, OUR NEW DAIRY MANAGER

**Our new Dairy Department Manager Nigel Ellis will already be familiar to many of our customers.**



He was assistant dairy manager from 2009 to 2011, having worked in the T H WHITE Dairy Division since 1993. After a brief period away, during which he became a district sales manager for DeLaval, he has returned to manage the department. In just over a month in the job he is already closely involved in the installation of a large, 50-point rotary milking parlour near Frome and is helping dairy farmers who are keen to move to the DeLaval voluntary Milking System (VMS).

Nigel is also keen to champion the benefits of the Delpro milking management system as well as strengthening the installation teams at Huntley and Frome and relaunching the electrical side of the dairy business. You can contact Nigel on 07384 254188 or email [nigel.ellis@thwhite.co.uk](mailto:nigel.ellis@thwhite.co.uk)

## MOTOR GROUP WRAPS OFF THE 2018 BTCC CHALLENGER!



**The long-awaited return of Alfa Romeo to the British Touring Car Championship (BTCC) came a dramatic step closer with the reveal of the stunning 2018 BTCC Alfa Romeo Giulietta at the NEC Autosport show in January.**

Back in October, when we announced the deal that would see Swindon-based Handy Motorsport (HMS) and race-winning driver Rob Austin take

Alfa Romeo into the competition, we 'wrapped' our Giulietta Veloce demonstrator from T H WHITE's Hillmead dealership in the eye-catching team colours for a photo-call. But at the NEC it was the real thing.

Journalists and eager enthusiasts thronged the official Motorsport News BTCC stand at the show as the car was revealed - and wow - it did look good! Raring to take the fight to the track,

the white and green Giulietta certainly means business and Rob Austin and team principal Simon Belcher gave thanks to everyone who had made it possible, including long-standing sponsor Duo which has formed a new partnership with HMS for 2018.

Members of T H WHITE Motor Group's team - who put much effort into work done by the Alfa Romeo Dealer Council in securing the initiative - were at the Autosport show to explain and demonstrate the car to the many admiring visitors. T H WHITE is the first dealer sponsor to be added to the car's livery.

Rob and Simon are justifiably confident the squad will be able to make big strides with the development and set-up of the Giulietta over the coming weeks, and the entire team is absolutely relishing the opening weekend of the new season on 7-8 April at Brands Hatch. "We have a great team of guys here who have built a beautiful BTCC car which, on paper, looks to be a notable step forward from our previous car," added Rob, "We have great support from some fantastic partners, we have reintroduced a truly iconic brand into top level UK motorsport."



DAIRY

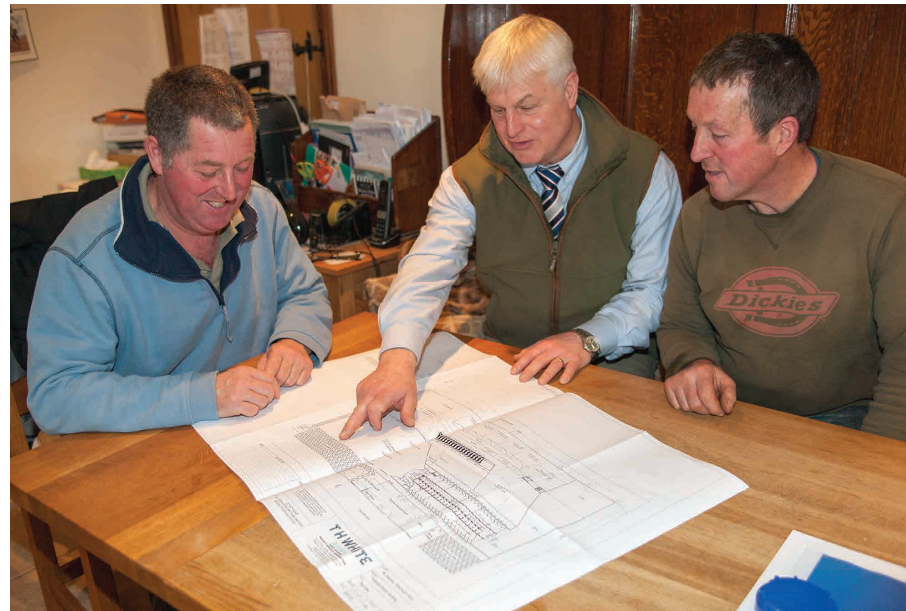
# PARLOUR INVESTMENT TO 'FUTURE-PROOF' DAIRY FARM

Anyone in the dairy business will tell you that recent years have not exactly been a bed of roses. Persistently low milk prices, cheap imports and uncertainty about the future have all made it difficult to plan for sustainability and development.

There are different schools of thought on the best way to meet these challenges. Some farmers, including quite a few new entrants to the dairy business, are developing large farms with up to 1,000 cows, seeing economy of scale as the answer to maintaining competitiveness in milk production. On many smaller farms however, where milking has been carried on through generations of the same family, the number of cows may have increased over the years but there simply isn't the scope or the desire to take the large farm route. That doesn't mean to say these farmers don't see a bright future – it's more about adopting the right approach and it's encouraging to see significant investments being made for milk production on a smaller scale.

A case in point is Whitchurch Farm, Ston Easton, where the Osborne family has been engaged in dairy farming since 1947. Although only 11 miles from Bristol the farm could hardly be more rural, occupying a wonderful position on the Mendips, some of the buildings dating back to the mid-1600s. Today the farm is in the care of brothers Tom and Jonathan Osborne who took over from their father and grandfather. With 220 cows to milk they have just committed to a new, fully automated DeLaval 20/40 herringbone parlour from T H WHITE's Dairy Department.

"Our old parlour certainly didn't owe us anything," says Tom who runs the dairy side of the business. "It was installed in



Tom Osborne (left) and his brother Jonathan (right) go through the new parlour plans with T H WHITE Dairy Division manager Nigel Ellis (centre).

1976 so has given more than 40 years service, although we have updated it a couple of times with direct milk lines and milk meters. But it was becoming clear that it was approaching the end of its life, so rather than wait until we had a failure in, say, five years time, we decided to go for a new parlour."

The decision was part of a plan to 'future-proof' the business. Both Tom and Jonathan have sons, but it's too early for them to say whether they might eventually want to take over the dairy operation. To provide flexibility for the future Tom and Jonathan decided to locate the building to house the new parlour next to the substantial cow shed they built in 2003. This is a few hundred yards from the main farm complex, meaning that if necessary the dairy operation could become a self-contained unit if required.

When the cow shed was built extensive earthworks and ground levelling had to be carried out and much more of the same will be necessary for the new parlour, but it will be worth it says Tom: "The new 20/40 parlour will enable us to milk in around two hours, just right for our herd size. There are three key factors which can help make a smaller-scale dairy operation successful: herd size and health – which are inter-related – and guaranteed outlet for your milk. Experience shows us that our herd size is right and it enjoys good health with low veterinary bills. Our cows yield 7,200ltrs, with solids of 4.4 butter fat and 3.45 protein.

"That's ideal as all our milk goes to Alvis Brothers in Bristol for high quality cheese production, which gives us an assured market."

There is, however, another reason underpinning the viability of Whitchurch Farm – a high degree of self-sufficiency – with 120 acres of land providing grazing and forage. "Our grazing is white clover and we are also growing three-year red clover rye grass and crimped wheat," says Jonathan, who manages the arable side of the business. "The only things we buy in are soya blend and cow cake."

It was through the arable activities that the Osbornes first started doing business with T H WHITE, purchasing agricultural machinery from 1985 onwards, and then dairy service and maintenance from about 1990. "It's a great relationship," says Tom, "and one which looks set to continue with the new parlour!"

If you would like to talk to T H WHITE about a dairy installation of any size, call Dairy manager Nigel Ellis on 01373 465941, or contact him by email at nigel.ellis@thwhite.co.uk



Exciting times at Whitchurch Farm as the team surveys the site for the new parlour.

AGRICULTURE

## MAKE MORE OF YOUR MULE



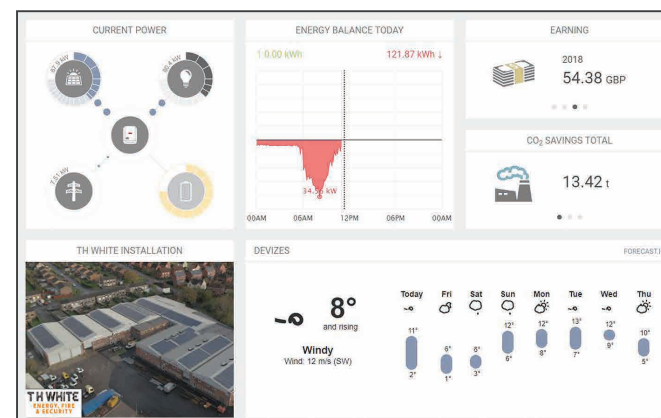
Two useful new rear cargo bed accessories will be available for the Kawasaki MULE PRO DX in March – a lockable canopy and a moulded flip-up tonneau cover.

The rear canopy fits on easily and can be purchased with an optional glass or ventilated steel rear hatch. The rear bed can still be tilted with the canopy fitted. The rear moulded tonneau cover, lifts up and keeps things dry and secure with lockable latches in the closed position. Both take very little time to fit, providing cover for livestock and important equipment. For price information or to place an order please contact one of our Agricultural or Groundcare branches.



ENERGY, FIRE & SECURITY

## SMART METERS FOR SOLAR OR BATTERY



The smart meter display on a January day at our Devezes HQ, showing full self-sufficiency and a surplus of 7.51kW which can be fed to a battery or the grid.

**In January we installed a new smart meter at the Energy, Fire and Security HQ in Devezes which monitors both the solar energy we generate and the power we use in real time.**

The beauty of the device is that it's really easy to use. We have connected it to our supply and generation and can view the information on a web portal and on a display in our reception. Now that we can view generation and consumption alongside each other we are able to see just how self-sufficient we are with our new 248kwp system. It is already showing that on many days in the year – even in the winter – we are 100 per cent self-sufficient.

The data is presented in clear, easy-to-understand graphics which show exactly how much power is being generated and used, either from solar or the grid, thus providing a measure of how self-sufficient we are at any time.

These smart meters are now available to all T H WHITE Energy customers – if you are a real expert you can also attach a pyranometer to monitor the available sunlight and compare that to the amount of energy being generated.

The data provided can also build up a picture of what benefit you might be able to obtain from adding a battery to store power for use when you need it. This could help some owners of solar installations to make the transition from being partly self-sufficient to 100 per cent self-sufficient, or at least make better use of solar energy to cut your bills!

We are now able to offer this device to customers who either already have a solar energy installation, or those who are considering either solar or battery solutions for their properties. For a quote based on your specific requirements, please email energy@thwhite.co.uk or call 01380 726656.

# KEEPING YOU SAFE & SECURE

## Access Control systems

From simple pinpad and swipe units to fingerprint biometric entry modules we can control access to any size of property, including those with restricted areas or secure rooms.



## Intruder Alarms

From bells only to fully policed, monitored systems. We can install the right system tailored to you or your insurance company's requirements. Already have a system? T H WHITE can carry out your annual tests, with a friendly face and a service you can trust.



## Fire Alarms

Business owner? Landlord? Health and safety manager? Our surveyors are fully accredited in system design and can work with you on any project to make sure you comply with the latest regulations.



## Fire Extinguishers

We offer supply and maintenance of fire fighting equipment, together with honest and accurate advice to keep you safe and compliant with the latest regulations. We also offer safety signage and accessories such as cabinets, vehicle boxes and escape ladders.



## CCTV & IP Cameras

For security, health and safety or machinery monitoring, we have the system for you. From fully HD conversions of existing systems to IP set ups we can future proof your CCTV installation. Coupled with our smart phone technologies you can monitor your system from anywhere in the world.



## Electric Gates & Barriers

From bespoke domestic style electrical gates to commercial barriers and bollards. Physical security combined with security systems enhance the protection of sites and stop would-be intruders in their tracks.



Call us today for a free, no obligation survey

**T H WHITE**  
ENERGY, FIRE & SECURITY

01380 726656  
thwhitesecurityandfire.co.uk





**2017 Fiat 500 1.2 Lounge Dualogic, VU17 KLP, Green, 1,000 miles, £13,450.** Leather, Electric Sunroof, Bi-Xenon Headlights, Memory Front Seats, Cruise, Air Conditioning, Parking Sensors.



**2016 Fiat 500C 0.9 TwinAir S Dualogic, WM16 VPW, Metallic Blue, 5,100 miles, £10,950.** Auto Climate Control, 7in TFT, Start/Stop, Memory Front Seats, Tinted Rear Windows, Electric Windows.



**2016 Fiat 500 0.9 TwinAir S Dualogic, SK66 HPJ, Red, 2,800 miles, £10,950.** Bi-Xenon Headlights, Fixed Glass Roof with Sunblind, 7in Touchscreen, Air Conditioning, Parking Sensors.



**2016 Fiat 500 1.2 Lounge, WV66 CUX, Coral, 7,500 miles, £8,950.** Air Conditioning, Start/Stop, Rear Parking Sensors, Electric Windows, Memory Front Seats, Hill Holder, Fixed Glass Roof.



**2016 Fiat 500 1.2 Lounge, VE16 WHJ, Grey, 5,744 miles, £7,950.** Leather Interior, Fixed Glass Roof with Sunblind, Start/Stop, Memory Front Seats, Rear Parking Sensors Air Conditioning.



**2015 Fiat 500 1.2 Lounge WO64 MVS, Beige, 42,000 miles, £6,450.** Air Conditioning, Alloy Wheels, Blue&Me Hands Free, Fixed Glass Sunroof, Voice Recognition, Radio/CD/MP3, Air Conditioning, TPMS.



**2013 Fiat 500 1.2 Lounge, WN13 LGA, White, 33,000 miles, £5,950.** Start/Stop, Climate Control, Alloy Wheels, Front Electric Windows, Satnav, Fixed Glass Sunroof, Radio/CD/MP3, Blue&Me.



**2017 Fiat 500L 1.3 MultiJet Trekking, WP17 EYA, Black, 50 miles only, £11,950.** Start/Stop, Cruise, Air Conditioning, Radio/CD/MP3, 5in Touchscreen, Black Diamond 17in Alloys, PDC.



**2017 Fiat 500X 1.6 MultiJet, VF66 CNO, Black, 8,950 miles, £11,950.** Automatic Climate Control, DAB Radio, Half Eco-Leather, Electric Windows, Dark Tinted Glass, Satnav, Cruise, 17in Alloys, TPMS.



**2017 Fiat Tipo 1.6 MultiJet II Elite, VA66 OXR, Metallic Blue, 6,700 miles, £9,950.** Air Conditioning, Start/Stop, 5in Touchscreen, 16in Elite Alloy Wheels, Satnav, Electric Windows, Rear Parking Sensors.



**2017 Alfa Romeo Giulia 2.2 TD Super Automatic, VA66 OXS, Monte Carlo Blue, 9,879 miles, £24,950.** Lusso Pack, Silverwood, Sports Leather, Heated Seats, Shift Paddles, Climate Pack, Cruise.



**2017 Alfa Romeo Giulia 2.9 Biturbo V6 Quadrifoglio, VE17 FYY, Black, 2,650 miles, £54,950.** Reduced Stunning 510 bhp, Leather/Alcantara, Harman Kardon, 5-Hole Alloys, Yellow Callipers.



**2016 Alfa Romeo Giulia 2.2 TD Super Auto, VE66 CVZ, Alfa Red, 7,000 miles, £24,950.** Ex-Demo, DAB, Cruise, Driver Assistance Pack, Yellow Brake Callipers, Tinted Rear Windows, Rain Sensor, Power Seats.



**2017 Alfa Romeo Giulia 2.2 TD Super Auto, VA66 UCE, Vulcano Black, 9,000 miles, £25,950.** Shift Paddles, Convenience Pack, Driver Assistance Pack, Audio Upgrade, Climate Control, Satnav, Cruise.



**2016 Alfa Romeo 4C 1.8 TBI, WV16 MXH, Pearlescent White, 5,350 miles, £34,950.** Red Leather interior, Alpine Stereo, Sports Seats, Racing Exhaust, Voice Recognition, TFT Panel.



**2017 Abarth 595C1.4 T-Jet Turismo, VU17 XLA, Blue, 4,400 miles, £14,950.** Convertible, Climate Control, Abarth Leather Upholstery, Electric Front Windows, Dark Tinted Rear Windows.



**2017 Abarth 595, VU67 NND, Grey, 3,365 miles, £13,450.** Air Conditioning, Traction Control, Electric Front Windows, Radio, Alloy Wheels, Electric Door Mirrors, Power Steering, Stunning!



**2017 Abarth 124 Spider Roadster 1.4 MultiAir, VU17 AYB, Blue, 2,000 miles, £26,950.** Ex-Demo, Bose Audio, Visibility Pack, Abarth Leather, Heated Seats, Air Conditioning, 17in Alloys, Alarm.



**2014 Abarth 500C 1.4 T-Jet, VK14 OVC, Red, 9,800 miles, £10,450.** Auto Climate Control, Rear Parking Sensors, Radio/CD/MP3, Blue & Me, Voice Activation, 16in Alloys, Dark Tinted Rear Windows.



**2017 Jeep Renegade 2.0 MultiJet II Longitude, WN17 FVK, Alpine White, 8,036 miles, £15,995.** Start/ Stop, Satnav, DAB Radio, Air Conditioning, Cruise, Hill Start Assist, Power Windows, Alloys.



**2017 Jeep Renegade 1.6 MultiJet II Limited, VA17 NPE, Multicolour, 7,741 miles, £20,950.** MySky Roof, Auto Lights, Rain Sensor, Function Pack, Visibility Pack, Leather, Dark Tinted Glass, Climate Control, Radio.



**2016 Jeep Cherokee 2.2 MultiJet Longitude Plus Auto, VO16 UGD, Billet, 17,403 miles, £29,950.** Full Leather, Auto Air Conditioning, Satnav, Cruise, Parksense with Stop, CD, Power Windows, Thatcham Alarm.



**2017 Jeep Wrangler 2.8 CRD Overland Auto, VF66 LCJ, Red, 2,500 miles, £29,950.** Full Leather, Heated Seats, Climate Control, Cruise, Voice Command, Satin Alloy Wheels, Power Windows.



**2017 Jeep Grand Cherokee 3.0 CRD Limited Plus, WP17 EXH, White, Delivery Miles, £31,950.** Deep Tint Sunscreen Glass, Heated Seats, Parksense Park Assist, Premium Leather, DAB.



**2017 Jeep Grand Cherokee 3.0 CRD Limited Plus, WP17 ENW, Black, Delivery Miles, £33,950.** Panoramic Sunroof, Parksense, Rear View Camera, Premium Leather, Heated Seats, Rear DVD.



Jeep

## PROJECTS

### DRAMA AT LAMMA 17-18 JANUARY 2018



**Overnight on 17 January and into the early hours of the next day, ferocious weather conditions with extremely high winds left the annual LAMMA event in tatters.**

Across the East of England showground there was significant damage to many of the outside stands and marquees, some sustaining severe structural damage which unfortunately led to the cancellation of the second day of the show on health & safety grounds.

Members of the T H WHITE Projects team were scheduled to spend two days at the recent LAMMA event – The UK's largest farm machinery equipment and agricultural services show – which was being held at the Peterborough venue for the last time.

Last year's event was highly successful for Projects and we managed to secure the same stand – No. 322 in Hall 3. As usual, the public support for the show was excellent and it was anticipated that more than 40,000 visitors would pass through the gates to experience the atmosphere of the event and meet some of the 850 exhibitors. A record LAMMA attendance was recorded for day one, whereas the events of the Thursday morning resulted in people having to turn around to go home.

This was the second event for the team since the Brexit clock started

ticking, so predictably it prompted some interesting debates and discussions around the showground on the first day.

Day one certainly produced some very interesting enquiries and opportunities for T H WHITE Projects, and the time spent at the show meeting customers from around the UK and overseas proved most worthwhile despite the unexpected closure on the second day.

For 2019 LAMMA is being held at a different venue. The showground at Peterborough will no longer be available so the event will instead be held at the NEC, Birmingham.

## AGRICULTURE

### OPEN EVENINGS

**Don't forget that we will be hosting informal open evenings at our branches in Frome (6 Feb, 4-9pm) and Knockdown (19 Feb, 6-9pm).**

These fun events will feature a hog roast, refreshments, bar and live music, as well as giving you a glimpse of what we do behind the scenes. You will be able to get hands-on with our machinery and meet supplier representatives from New Holland, Kuhn, Hardi, Väderstad, Kawasaki, DeLaval, AirWash Plus, Manitou, McConnel, Opico, Warwick, Pöttinger and Honda. At the Frome event we will also have representatives from Case IH, Hi-Spec and Bauer.

The evenings are free to attend and there will be a raffle with all proceeds going to local air ambulance charities.

If you would like to attend, just email as soon as possible with your name and total number of guests to: [frome\\_reception@thwhite.co.uk](mailto:frome_reception@thwhite.co.uk) (Frome), or [vmw@thwhite.co.uk](mailto:vmw@thwhite.co.uk) (Knockdown).

## MACHINERY IMPORTS

### CHIPPING FOR CHARITY



**Jensen woodchippers were on hand in January to support an event which raised over £12,000 for charity.**

Dorothy House, which offers end of life care to patients with terminal illnesses, and Wiltshire College joined forces for the second time for a Christmas tree collection and recycling scheme. In total, supporters and volunteers collected more than 1,500 real Christmas trees, 300 of which were delivered to Wiltshire College's Lackham campus, which specialises in land-based training courses.

Wiltshire College students then had the chance to learn a new skill. Working with Bill Johnston from T H WHITE Machinery Imports, the students used Jensen's best-selling A540 chipper to reduce all 300 trees while learning about the safe use of woodchippers.

Anthony Cockell, Head Gardener at Lackham, said: "It's a privilege for the College to play a part in what is a fast-growing fundraising scheme for Dorothy House, also giving our students the chance for further training.

Steph Cox, a Community Fundraiser for Dorothy House said: "We are over the moon to have raised £12,800 – twice the amount raised last year! It's great that the Christmas trees have also benefitted students at Wiltshire College, who have not only learned how to chip trees, but have also achieved the best use for them."

## T H WHITE COUNTRY STORE

London Road, Marlborough SN8 2RN  
Mon-Fri: 8am - 6pm Sat: 8am - 5.30pm  
Sundays & Bank Holidays: 10am - 4pm  
Tel: 01672 518408

Knockdown, Tetbury GL8 8QY  
Mon-Fri: 8am - 5.30pm Sat: 8am - 12 Noon  
Sundays & Bank Holidays: Closed  
Tel: 01454 238181



CLOTHING UP TO  
50% OFF!  
FEBRUARY ONLY

## COMPOST! ALL OFFERS WHILE STOCKS LAST



### Levington Essentials

£3.99 each or any 3 for **£10**

Valid on Levington Essentials range only

### Levington John Innes

£5.99 each or **3 for 2**

Valid on promotional packs only



## BIG NAMES IN USED EQUIPMENT



2009 New Holland CX8070 Combine, self levelling, 24ft varifeed & trailer, chopper & chaff spreaders **£86,000 AD**



2010 New Holland FR9060, 4wd, grass & maize **£78,500 AT**



2000 New Holland FX38, 3317 cutting hrs, 4650 engine hrs, crop processor **£22,000 RM**



2004 New Holland, R1600Y 8 Row Maize Header, to fit New Holland FR, very good condition **£ 15,000 AT**



2016 New Holland BB1290 standard Big Baler, steering axle, extended warranty, 14000 bales **£ 72,000 BW**



2011 New Holland BB9060 Packer Cutter Baler, 42000 bales, VGC **£ 37,500 AT**



2002 New Holland BB940 Big Baler, 92000 Bales, good condition for age **£17,500 AT**



2011, Class Big Baler 2200, very good order & careful driver owner, very well maintained **£28,500 CD**



2002 Claas 2200 Big Square Baler, 120 x 70 bale, rotor feed, single axle, good working order **£12,000 JW**



2016 New Holland T6.155, 50kph, NH Loader, front linkage & PTO, climate control **£62,500 RM**



2013 New Holland T7.200 Auto Command, sidewinder, front linkage, 2300 hrs **£55,000 BW**



2016, Iseki TG6490, 36hp, 1,100 hrs, features new IQ dual-clutch transmission, resprayed **£9,995 PC**



EX-DEMO - 2016 Manitou MT14000 easy comfort, 96 hrs, deutz 75hp engine tier 3b, immaculate **£48,500 SCT**



2011 Manitou MLT 634T, 120 LSU PS, pin & cone, excellent condition **£31,000 JW**



2010, Manitou MLT627, choice of JCB headstock or Manitou, very nice condition **£25,250 AD**



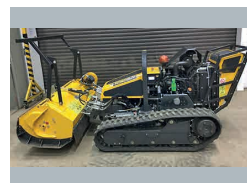
2017 Ex-Demo Schuitemaker Rapide 520S, air/hyd brakes, LED lights, mudguards **£59,000 BW**



2017 Schuitemaker Feedo 50.8 Feeder Wagon, variable floor speed, beaters & cross conveyor **£14,000 BW**



2012 Kuhn Trailed Sprayer, 3200 RHPA, 24m booms alloy, 2800 ltr, auto steer drawbar **£21,500 SC**



EX-HIRE - McConnel Robocut, 124 hrs c/w flail head 1300, option to buy Mulcher **£33,500 RM**



EX-DEMO - 2017 Honda UTV 700M2, 2/4wd and difflock, 2 year warranty, fitted towball, **£10,250 TR**

Sales Hotline: **01373 465941** (Mon-Fri 08.00-17.00) Out of hours: **07710 985957**

New: [www.thwhiteagriculture.co.uk](http://www.thwhiteagriculture.co.uk) Used: [www.thwhiteused.co.uk](http://www.thwhiteused.co.uk)

### MACHINERY

- New Holland BC5060 Baler, lightly used, like new **£10,200 RM**
- 2015 Kuhn FC313DF, front mounted 8 disc cutterbar, 3.1m cut, steel condition, fast fit blades **£7,800 BW**
- 2014 Kuhn FC313FF front mower condition, very good condition **£6,500 AD**
- 2008 Kuhn Primor 2060H Straw Chopper, good working order **£6,500 RM**
- Kuhn MM121 5 Furrow Plough **£4,000 BW**
- 2015 Kuhn GMD240 Disc Mower, 200 acres from new **£4,000 RD**
- 2001, Kuhn FC283 2.8m Mower Conditioner, good condition **£2,200 JW**

**RB Ray Bennett 07710 985957**  
**PC Paul Churches 07702 724308**  
**SCT Steve Clucas-Tomlinson 07860 593339**  
**SC Stuart Crook 07831 249489**  
**AD Andy Daffurn 07860 331023**  
**CD Colin Davis 07860 401211**  
**RD Rhodri Davies 07775 003460**

- 2005, John Deere 324 Mower Conditioner, outstanding, serviced ready to go, well looked after and dry stored **£3,700 AD**
- 2014, Husqvarna HM P524 Outfront Mower, hydrostatic 4wd, power articulated steering, articulated steering, 112cm combi cutting deck **£5,500 SK**
- Ransome T-Plex 180 Triple Cylinder Mower, very good condition **£2,750 SK**
- EX-DEMO - Robomow RS630 mower, base station, wire & pegs, all accessories to self-install, very good condition **£1,800 SK**
- Opico 8 ton Grain Dryer, diesel powered, good working order **£3,800 RM**
- Choice of 2 - 2016 New Holland Trimble 372 RTK radio to fit Trimble 372 receiver **£1,450 RM**

**NE Nigel Ellis 07384 254188**  
**BG Bob Gallop 07831 883734**  
**MH Matt Hooper 07824 607087**  
**SK Simon Knight 07860 712963**  
**RL Ryan Lanfear 07769 248602**  
**CM Chris Martin 07919 044389**  
**RM Richard Morgan 07831 351379**

### ATV

- EX-DEMO - 2017 Honda TRX500fm6 Foreman, Heavy duty utility ATV **£6,975 TR**

### TRAILER

- 2015, Logic ST447E Galvanised trailer, 1500mm x 1000mm x 870mm **£695 TR**

### WANTED

Used DeLaval milking equipment, mainly electronic Alpro computerised systems with or without in parlour feeding but most considered **Contact NE**

**SP Simon Pratt 07909 895502**  
**TR Tim Rochfort 07973 911934**  
**AT Andy Taylor 07831 255811**  
**BW Ben Willcox 07826 917955**  
**JW Joe Woolley 07818 077591**  
**PY Patrick Yeates 07780 225104**

All items offered are subject to remaining unsold. Prices shown do not include VAT.

BRANCHES: DEVIZES: 01380 722381 FROME: 01373 465941 ANDOVERSFORD: 01451 850363 HUNTLEY: 01452 830303  
 KNOCKDOWN: 01454 238181 MARLBOROUGH: 01672 512328 TODDINGTON: 01242 620211 STOCKBRIDGE: 01264 811260

