



Gear up for harvest



Talented Talento



Projects go from strength to strength in Scotland

PLUS extensive choice of quality used equipment, machinery and vehicles...

- AGRICULTURE
- PROJECTS
- GROUND CARE
- DAIRY
- COUNTRY STORE
- TRAILER CENTRE
- LORRY CRANES
- CONSTRUCTION
- MOTOR GROUP
- ENERGY, FIRE & SECURITY
- ONLINE STORE
- MACHINERY IMPORTS



AGRICULTURE

THE FUTURE IS HERE – AND IT'S METHANE

Following its unveiling in Italy, New Holland's second generation prototype T6.180 Methane Power tractor was shipped to the UK where, in the custody of T H WHITE, it was taken for testing by journalists and farmers at Wyke Farms in Somerset.

Developed by New Holland as a 100 per cent sustainable solution to increasing fuel costs, the new tractor has been designed to emit 80 per cent fewer pollutants than a conventional diesel tractor, as well as having the potential to deliver significant fuel cost savings with no Ad Blue required either. Although still at the prototype stage, the methane-powered tractor is expected to cost roughly the same as a diesel tractor when it goes into production.

Wyke Farms – one of the UK's biggest cheddar producers – was chosen for the demonstrations as it is already energy-independent thanks to three large anaerobic digesters which process waste from the farm's 1,000 dairy cows, local cider waste and other suitable material. The resulting methane is used to power the farm's boilers and generate electricity for the farm and the cheese factory. Excess gas is sold back to the grid to serve the local community.

With the addition of an on-site compressing plant Wyke Farms could in future run their tankers on biogas – as well as tractors, potentially slashing the £4,000 per month spent on red diesel by 25 to 40 per cent.

Continued page 2 >>



News and information from the T H WHITE Group

T H WHITE GROUP



SHOOTING SPECIALS!

Hatsan Striker 1000 **£99**
 All in-stock rifle ammunition **10% OFF**

JAMES WELLBELOVED ADULT DOG FOOD

15kg SPECIAL **£41.99**



T H WHITE Country Store
 London Road, Marlborough SN8 2RN
 01672 518408

GROUP		WHITE'S WORLD	
White's World is published monthly by T H WHITE. To contact our Divisions, call:			
Agriculture	Knockdown	01454 238181	
	Marlborough	01672 512328	
	Frome	01373 465941	
	Huntley	01452 830303	
	Toddington	01242 620211	
	Devizes	01380 722381	
	Andoversford	01451 850363	
	Stockbridge	01264 811260	
Projects		01380 723040	
Groundcare	Knockdown	01454 238181	
	Reading	0118 976 0088	
	Redditch	01527 597770	
	Stockbridge	01264 811260	
Dairy	Frome	01373 465941	
	Huntley	01452 830303	
Country Store		01672 518408	
Trailer Centre		0118 976 0088	
Lorry Cranes		01380 722381	
Construction		01672 512328	
Motor Group		01793 680480	
Energy, Fire & Security		01380 726656	
Online Store	www.thwhitestore.co.uk		
Machinery Imports		01264 811260	
	www.thwhite.co.uk		
	head_office@thwhite.co.uk		
	© T H WHITE Group 2016 E&OE		
	Nursted Road Devizes Wilts SN10 3EA		

AGRICULTURE



THE FUTURE IS METHANE Continued from front page

The T6.180 Methane Power tractor uses state-of-the-art engine technologies supplemented by a small three-way catalytic converter, all housed within a standard tractor chassis and cab. Nine biogas tanks have been integrated in the tractor's bodywork which will hold 300L (52kg) of compressed methane – enough for around six hours of work depending on activity and load, while exceeding the current Tier 4B emissions legislation.

On test at Wyke Farms the tractor was hauling a fully-loaded tanker, the combination weighing in at 27 tonnes.

Roger Clothier, Wyke Farms' Director who drove the prototype tractor said: "My first impression is that this looks and feels just like a normal tractor. It was perhaps a little slower to get off the line, but once moving the tractor came alive. Engine braking downhill was good and there was plenty of power in the mid-range and top-end with no torque issues when going uphill - it drove just like a diesel."

The main interest for methane-powered tractors will probably come from farms with their own AD plants.

These farms tend to run 200hp-plus tractors and the T6.180 Methane Power could be a little underpowered so development work is likely to include higher power outputs.

Farms without a biogas plant could avoid the expense of additional plant investment by using the gas from the CNG distribution network, while there is also the possibility that larger enterprises, such as Wyke Farms, may in due course provide a centralised filling point for the local area, as long as there was sufficient demand from neighbouring farmers and hauliers running methane-powered vehicles.

While there is still much development work to do on the Clean Energy project, the technology has made huge advances and there's little doubt that the future will be green.

If you would like to keep in touch with New Holland's Clean Energy Leader programme, just register your interest with Ben Willcox at T H WHITE Agriculture on 01373 465941, or email bjw@thwhite.co.uk.

FARM SAFETY WEEK 4-8 July 2016

On Tuesday 5 July the NFU and T H WHITE's Marlborough branch hosted an information event for members to help spread the message about good farm safety practices as part of 'Farm Safety Awareness Week'.

Over 30 farmers enjoyed an informal hog roast before visiting a series of stands and displays which showcased common risks, new safety features, and risk mitigation tools.

There were also presentations from Wilts Fire & Rescue (large animal rescue, fire safety); Scottish and Southern Electricity (overhead and underground lines); NFU Mutual Risk Management Services; Lackham College; NFU Farm Safety Campaign; and Kevin Short, T H WHITE Health & Safety Manager. The event was co-ordinated by Andi



Witcombe, NFU County Adviser for Wiltshire, and Simon Bullock, T H WHITE Service Manager.

Simon said: "Farm safety is of paramount importance to us and we welcome this opportunity to spread key messages in conjunction with other partners who support the agricultural industry."

PROJECTS

SPREADING THE WORD Cereals, 15-16 June 2016

Members of the T H WHITE Projects team spent two days at the recent Cereals event – the leading technical show for the UK arable industry which was this year held on 15 and 16 June at Chrishall Grange, Duxford, Cambridgeshire.

T H WHITE's stand, comprising two white marquees on a 10 metre-square plot, was erected in preparation for hosting many of the 24,000 people reported to have visited the show despite



the poor weather conditions. Cereals is the leading technical event for the UK arable industry.

More than 500 organisations promoted their products and services with trade stands, crop plant areas, static equipment, plant and working demonstrations. The T H WHITE stand contained materials demonstrating the capabilities of the Projects Division as well as other relevant Divisions, portraying our diverse businesses and maximising our presence.

The rain held off most of the time and the Cereals show was spared the mud and wellies of Glastonbury, allowing our team to meet with numerous existing and new customers, plus many of suppliers and contractors. When the rain did arrive it was good to see some very grateful customers keeping dry under a T H WHITE umbrella!



Next year we will be exhibiting at Cereals in Lincolnshire and we look forward to another successful event for T H WHITE. **Andrew Workman**

ALL NEEDS

**NEW CX7 – CX8
SUPER CONVENTIONAL COMBINE.
SUPER VERSATILE PERFORMANCE.**

ONE EXCELLENCE

**NEW CR
THE WORLD'S MOST POWERFUL
COMBINE.**

SUPER QUALITY
20% better cleaning performance for a top quality grain sample with Opti-Clean™ technology. Super fine chopping and powerful straw spreading with Opti-Spread™.

SUPER VERSATILITY
The sectional concaves system allows quick crop-to-crop conversion. Maize, grain and rice headers available. Select between straw chopping to rowing functions.

SUPER CAPACITY
Up to 12,500 litres grain tanks for unloading less and spending more time concentrating on harvesting.

SHARED FEATURES. UNIQUE RESULTS.

BEST-IN-INDUSTRY COMFORT
Spacious 3.7m³ Harvest Suite™ Ultra cab with a 6.3m² glazed area delivers the best view for precision cutting. CommandGrip™ multifunction handle and up to two 26.4cm IntelliView™ IV touchscreen monitors for intuitive harvesting management.

UNBEATABLE EFFICIENCY
Super-efficient ECOBlue™ HI-eSCR engines combine responsive performance and low fuel consumption in all working situations.

SOUND AGRONOMIC ADVANTAGE
Super large footprint SmartTrax™ system with Terraglide™ suspension makes for more traction and less compaction in all conditions.

SHINING PERFORMANCE
If you're a night time harvester, the LED Lighting package enables true, 24 hour productivity.

EXTRA POWER
Up to 653hp on the new CR10.90, the world's most powerful combine and World Harvesting Record holder with 797.656 tonnes harvested in 8 hours.

EXTRA QUALITY
Unique Twin Rotor™ threshing system, 10% higher capacity with Twin Pitch technology, crop accelerating Dynamic Feed Roll™ for even higher output.

EXTRA PRODUCTIVITY
Largest ever 14,500l grain tank, 143l/sec unloading speed, 10.5 m pivoting auger for greater unloading flexibility.

T H WHITE

AGRICULTURE

Contact your local T H WHITE Branch for further details
 Sales: 01373 465941
 Out of hours: 07710 985957 www.thwhite.co.uk

AGRICULTURE

CONTROLLING BLACKGRASS

The development of herbicides has enabled arable growers to break all the rules, but a side effect of relying on chemicals as a primary means of weed control is that blackgrass has become an extremely serious problem.

D A Taylor of Waterloo Farm, Fringford, grows, 2000 acres of combinable crops and regards the creation of a stale seedbed as one of the most important elements in his strategy to contain blackgrass to a manageable level.

"We were running a set of heavy discs followed by a tined cultivator," he explains, "but it was difficult to set it to move only the top two inches on the heavy ground. I always wanted an implement that just tickles the ground cheaply and quickly. A neighbour had a Väderstad Carrier so we tried it out on 200 acres of hard, heavy land – it made the seedbed I was looking for. The number of discs on the Carrier means it creates only a shallowtilth, but also chops trash and produces a good soil/residue mix.

"I can't think of another cultivator with the Carrier's versatility, one that enables an extremely shallow cultivation and levels and firms the ground. It has made all our other cultivations implements virtually redundant and enabled us to practice a cultural and chemical programme that keeps our blackgrass to a manageable level."

To find out how the Väderstad Carrier can bring versatility to your land management strategy contact us on 01672 512328, or email agriculture@thwhite.co.uk



GROUND CARE



GREEN SPACE MANAGEMENT IN COVENTRY

Back in the year 2000 the city of Coventry passed its entire stock of social housing – 17,500 homes in all – to the Whitefriars Housing Association, one of a number of associations operating in the West Midlands, Herefordshire and Worcestershire which are now part of the W M Housing Group.

As well as upkeep of the housing stock, an essential part of maintaining an attractive and well-managed environment is care of the grass areas, open spaces and verges – 1.2 million square metres of them in Coventry's case. Until recently this task was in the hands of contractors, but now Whitefriars has started its own subsidiary, GreenWorks, to maintain the green areas.

Ken Lindsay, supervisor at GreenWorks, has two assistants and 25 operatives to ensure that the rolling programme of work is completed to a high standard. "When we took over from the contractors we had nothing," Ken explains, "so the first job was to acquire the right equipment. We knew from past experience that Ferris and Wright produce tough, reliable machines so we asked a number of local suppliers to tender. After meeting the teams

we placed the order with T H WHITE's Redditch branch and I'm so glad we did... The support and back-up they have given us – particularly our rep Lee Miles – as we got the new operation up and running, has been outstanding."

GreenWorks has taken delivery of a Ferris FW35 flail mower, a large Ferris IS5100 rotary mower and five smaller IS2600 rotary mowers, together with five Wright Standers for confined and more difficult areas. Added to that were five Ifor Williams trailers for transporting the mowers to site.

"From a standing start, T H WHITE has helped us maintain an environment we are all proud of," Ken added.

DON'T MISS...

New Holland combine demonstration day, Wednesday 17 August, Farmcare, Manor Farm, Down Ampney Estate, Latton, Cirencester. Gates open 07.30; bacon rolls at 08.00; walk around 08.30; demo 11.00 (subject to weather). A great chance to see and try the latest New Holland combine harvesters.

If you would like to attend, please contact your T H WHITE Agricultural representative who will confirm the precise location and field.

PROJECTS

STRENGTH TO STRENGTH NORTH OF THE BORDER

On the banks of the Moray Firth, near the mouth of the famous River Spey, is the Crisp Malting Plant at Portgordon which was originally constructed and commissioned in the early 1980s.

As these maltings are located in the heartland of the Scottish whisky distilling industry, it's perhaps not surprising that the focus for Portgordon is on the production of quality malt for the numerous distilleries in the region. Locally grown malting barley is sourced from Morayshire, Banffshire and Aberdeenshire to feed the malting plant.

T H WHITE has a long-established relationship with the Crisp Malting Group which has several other malting facilities in the UK and has been producing malt since 1870. A couple of years ago T H WHITE installed a new pelleting plant at the Crisp Malting site in Alloa and the Projects Division is currently undertaking work at the group's site at Great Ryburgh, Norfolk.

This year in Scotland the Projects team has been actively involved in Portgordon's upgrade and expansion programme. Some additional malt storage has been installed and T H WHITE Projects has also acted as the Principal Designer for the Mechanical and Electrical contract, working closely with the appointed civil contractor.

This new investment by the Crisp Malting Group has made possible the construction of three 445-tonne, 8m diameter hopper-bottom corrugated steel silos with 45 degree cones, as well as two 1,200-tonne, 13m diameter flat bottom steel silos. Replacement conveyors and elevators have also been installed, together with handling equipment for the new silos which are rated at 50tph of malt.

Commissioning and hand-over to the client was successfully completed in July.

A second project is currently being installed at the Frontier Grain Store in Newmachar, Aberdeenshire. Frontier is one of the UK's leading grain trading organisations, enjoying strong relationships with both its farmers and grain buyers. Of the numerous UK sites owned by Frontier, the facility at Newmachar has recently benefitted from investment, with a second Alvan Blanch horizontal flatbed drier rated at 53tph on feed barley being installed during the summer months for commissioning in September.

T H WHITE Projects was awarded the

mechanical and electrical contract to design, supply & install the new drying and associated 60tph handling system at the Grain Store, whilst working closely with the local civil engineering contractor.

As the Principal Designer for the project, T H WHITE was also requested to include two new 150 tonne, 5m diameter, wet holding hopper-bottom silos. These function in conjunction with the new drier to ensure flexibility of process.

Elsewhere in the region two other key T H WHITE customers are preparing for the forthcoming harvest with plants designed and constructed by the Projects Division in recent years.



Crisp Malting Group, Portgordon

Aberdeen Grain, a large Scottish grain co-operative organisation, used T H WHITE's services to increase the on-site intake, wet holding, grain drying and storage capacity. This included an additional 400tph intake capability with rapid tailgate discharge, plus 1,500 tonnes of wet holding capacity in three hopper-bottom silos. In conjunction with the infeed arrangement, a pre cleaning and drying system was also designed to handle the high volumes of malting barley which are routinely processed and stored in the plant.



Aberdeen Grain



Angus Cereals, Montrose

With a new flat-storage building and a further set of flat-bottomed silos currently being installed, Aberdeen Grain is very well equipped to cope with future harvests.

In the east coast Port of Montrose, near the mouth of the River Esk, another T H WHITE Projects installation has been carried out for Angus Cereals. This quayside grain store is owned by a farmer membership, and is strategically located, with excellent road and rail links, bringing added value to the supply chain.

Constructed by T H WHITE in two phases, the current on-site storage capacity surpasses 40,000 tonnes with plans to add a further 36,000 tonnes as a future expansion. Its 200tph intakes, wet grain holding hopper silos three high capacity mains gas-fired grain driers, segregated bunker flat storage and flat-bottom silo storage, make it a very functional and flexible facility able to meet operational demands.

With these new projects and other sites in Scotland, T H WHITE is very well represented north of the border with some excellent credentials.

T H WHITE Projects specialises in grain processing and storage solutions of all sizes, from small farm installations to large commercial and industrial bulk facilities, taking each project from conception to completion. If you have a scheme you would like to talk about, please do contact us on 01380 723040 or email projects@thwhite.co.uk

BREAKDOWN & HARVEST SERVICE

MATERIALS HANDLING AND BULK STORAGE HARVEST SUPPORT SERVICE AND PARTS

(Office hours) 01380 723040

Contact us now and ask for Kevin Alnwick

We are able to supply and fit parts for the majority of manufactured branded equipment, both past and present

- Chain conveyors
- Screw conveyors / Augers
- Driers
- Belt conveyors
- Bucket elevators
- Cleaners

Grain store emergency out-of-hours hotline: 07919 394602

T H WHITE PROJECTS



CALL US NOW AND BE PREPARED

MOTOR GROUP

NEW JEEP CHEROKEE OVERLAND COMBINES LUXURY AND OFF-ROAD PROWESS

Jeep has announced its plans to expand the popular Cherokee range with a luxury new 'Overland' version. The model made its debut at the Geneva Motor Show earlier this year and has stunned industry professionals with its sophisticated style, elegant interior and Jeep's legendary off-road prowess.

The new Jeep Cherokee Overland is equipped with a 2.2-litre MultiJet II 200 horsepower turbo diesel engine paired with a nine-speed automatic transmission in either Active Drive I offering seamless power transition in and out of 4WD, or Active Drive II 4WD with low range. The potent engine gives the car a 0-62mph time of 8.5 seconds and a top speed of 127mph. The Euro 6 unit has a 149g/km CO2 figure, due to an improved final drive ratio when compared with the MY15 Cherokee, and a fuel economy of 50.4 mpg.

The exterior of the new Cherokee is as powerful as its performance: a

polished bright front grill complements the strong body of the car and the new body-coloured door cladding adds a sleek detailed touch. Some of the other new features include front and rear bumpers and wheel arches, new 18-inch polished bright aluminium wheels and an Overland badge on the tailgate. The car is also available in a range of colours: Deep Cherry Red, Bright White, Brilliant Black and Billet Silver.

When it comes to interiors, Jeep has always been a trend-setter and the new Cherokee proves this with a fantastic new design. Its refined looks are complemented by powdered Nappa

leather ventilated and heated driver and passenger seats, a new steering wheel with wood insert, anodized silver bezels and Berber floor mats. The interior is available in Morocco Black Nappa Leather or in a brand new Pearl coloured Nappa Leather finish.

Prices for the new Jeep Cherokee Overland are: 2.2 MultiJet II 200hp Overland Active Drive, 4WD 9 speed auto: £38,745; 2.2 MultiJet II 200hp Overland Active Drive II 4WD 9 speed auto: £39,950.

To find out more about the models in the Jeep range, visit www.motors.thwhite.co.uk/jeep



TALENTO SPECIFICATION AND PRICES

The all-new Fiat Talento will be the perfect van for many businesses which demand the best of all worlds – a compact exterior with impressive interior volume of up to 8.6m³ and a payload of up to 1,249kg; ample load-pulling performance combined with outstanding fuel efficiency (47.9mpg / 5.9L/100km on the official combined cycle) and packed with features designed to improve the comfort, safety and productivity of the most precious cargo of all – the occupants.

The new Talento is compact and well-proportioned, with a forward-stretching windscreen that connects elegantly to the short bonnet. The grille is designed to wrap around the headlights and form a mask that together with the bumper

and the grid conveys a solid and striking appearance. The squared-off rear end allows for ample inner space and a high load capacity while giving the Talento a broad stance.

It's equipped with powerful and efficient 1.6-litre turbo and twin-turbo diesel engines with a six-speed manual gearbox as standard.

Standard equipment on the entry level Fiat Talento includes remote central locking, electric front windows, electrically operated and heated door mirrors, a full bulkhead, height adjustable driver's seat with lumbar support and armrest, dual passenger seat, a powerful audio system with Bluetooth, DAB, USB, Aux-in, a full-size spare wheel and steering-wheel remote controls.

There are nine body styles to choose from the standard and high-roof vans in both short and long wheelbase versions, short and long wheelbase people carriers and crew vans, and a long-wheel base platform cab. Innovative features include the 'CargoPlus' storage area under the passenger seats which allows professionals to carry objects up to 3.75m in length (4.15 for LWB versions) by sliding them into a special bulkhead opening. The load volume equals 5.2m³ in short wheelbase models, 6m³ in long wheelbase versions, with a generous 8.6m³ in the long wheelbase high-roof derivative. This means that the Talento, even in the short wheelbase trim level, is capable of carrying three Euro pallets. The all-new Fiat Talento is now on sale with prices starting at £19,795 for the 1.6-litre MultiJet 95hp SWB standard roof van. The range-topping twin-turbo 1.6-litre EcoJet 145hp S&S is priced from £21,245.

The long-wheelbase Fiat Talento is priced from £21,395 (1.6 MultiJet 120hp), the crew van starts at £21,145 (1.6 MultiJet 95hp), the platform cab is available from £21,545 (1.6 EcoJet 125hp S&S) and the Combi is priced from £21,885 (1.6 MultiJet 95hp).

Visit www.motors.thwhite.co.uk/fiat professional to find out more about the Fiat Professional range.

TH WHITE MOTOR GROUP



2015 Fiat Panda 1.2 Pop, VK65 MSU, White, 1,952 miles, £6,450. Stop/Start, Electric Front Windows, Hill Holder, Radio/CD/MP3, Tyre Pressure Monitoring System, 55mpg, One Owner.



2015 Fiat Panda 1.2 Easy, VO65 TSX, White, 7,000 miles, £6,950. Air Conditioning, Start/Stop, Electric Front Windows, Hill Holder, Radio/CD/MP3, Tyre Pressure Monitoring System.



2015 Fiat 500 1.2 Colour Therapy, VN63 JFJ, Red, 14,000 miles, £6,450. Special Paint, Grey Cloth, Cream Highlight Steering Wheel, Air Conditioning, Electric Windows, Radio/CD/MP3, 59mpg.



2014 Fiat 500 1.2 Lounge, VN14 ZDA, Purple, 13,500 miles, £7,450. Air Conditioning, Fixed Glas Roof, Start/Stop, 15in Multispoke Wheel, Air Conditioning, Electric Windows, Radio/CD/MP3, DAB Audio, Blue & Me, Bluetooth.



2014 Fiat 500 1.2 S, VA14 OPX, Bossa Nova White, 10,000 miles, £7,450. Dark Tinted Rear Windows, 7in TFT Screen, 15in Alloys, Aircon, Voice Recognition, Start/Stop, Radio/CD/MP3.



2015 Fiat 500 1.2 S, VK15 PGZ, Blue, 15,685 miles, £8,250. Start/Stop, Auto Climate Control, Hill Holder, Rear Parking Sensors, 16in Alloys, Dark Tinted Rear Windows, Blue & Me Hands Free.



2016 Fiat 500 1.2 Lounge, LK16 NNM, Blue/Green, 1,446 miles, £10,450. Fixed Glas Roof with Sunblind, Air Conditioning, Rear Parking Sensors, Star/Stop, 15in Alloys, Hill Holder, Radio + USB.



2015 Fiat 500X MultiAir Pop Star, WM15 UAP, Blue, 11,215 miles, £12,950. DualZone Climate Control, 5in Touchscreen, 17in Alloys, Parking Sensor, Hill Holder, Electric Windows, Start/Stop.



2015 Fiat 500X 1.4 MultiAir Cross Plus, WO15 VHP, Grey, 9,074 miles, £14,450. Dual Zone Climate Control, Leather/Cloth, 18in Alloys, Cruise, Parking Sensors, Keyless Go, Tinted Glass.



2016 Fiat 500L 1.6 MultiJet Lounge VA65 UAC, Red, 10 miles, £15,950. Pre-Reg, Electric Sunroof, Electric Windows, Auto Lights with Rain Sensor, Electric Door Mirrors, Front Fog Lights.



2016 Alfa Romeo MiTo 0.9 TB TwinAir Progression, VK16 SFJ, Black, 2,563 miles, £9,950. Climate Control, 5in Touchscreen, Voice Recognition, 15in Alloys, One-Touch Front Windows, TPMS.



2014 Alfa Romeo MiTo 1.4 TB MultiAir, VK64 RYD, Black, 6,500 miles, £12,950. Cruise, One-Touch Electric Windows, Front Fog Lights, Rear Parking Sensor, Electric Heated Door Mirrors, Blue & Me.



2016 Alfa Romeo Giulietta 2.0 JTDM-2 Distinctive, VA16 VGR, White, 100 miles, £18,950. Sports Leather, Parking Sensors, Dark Tinted Windows, Colour Touch Screen, Turbine Alloys, CD.



2015 Alfa Romeo Giulietta 1.6 JTDM-2 Progression, VE15 VEA, Metallic Blue, 4,000 miles, £15,650. Climate Control, 16in Double-SDpoke Alloys, Electric Windows, Hill Holder, Start/Stop.



2015 Alfa Romeo Giulietta 1.7 TBI Quadrifoglio Verde, VE65 LLL, 8C Red, 6,033 miles, £22,950. Bose Sound System, Carbon Pack, Heated Seats, 5-Hole Dark Alloys, Leather/Alcantara, TPMS.



2016 Alfa Romeo 4C 1.8 TBI Spider, VK16 UFH, Competizione Red, 1,000 miles, £54,495. Black Leather, Sports Seats, Racing Double Tail Pipe, Air Conditioning, Red Brake Callipers, Sports Seats.



2012 Abarth 500C 1.4 T-Jet, LS12 YVC, Grey, 18,250 miles, £11,250. MTA Auto, Convertible, Climate Control, Parking Aid, 16in Alloys, Electric Windows, Radio/CD/MP3, 16in Alloys, 95/45 R16 84V Tyres.



2015 Abarth 500 1.4 T-Jet 595 Competizione, VN65 PWJ, Multicolour, 900 miles, £17,950. Ex-Demo, 180bhp, Titanium Finish Alloys, Leather/Alcantara Abarth Corsa Front Seats, Climate Control.



2015 Jeep Renegade 1.6 MultiJet Longitude, WR15 OVJ, Alpine White, 5,555 miles, £14,895. Special Paint, Satnav, 17in Alloys, Air Conditioning, DAB Audio, Cruise, Hill Start Assist, Alarm.



2016 Jeep Renegade 1.4 MultiAir II Limited, VK16 SCX, Omaha Orange, 30 miles, £19,950. Pre-Reg - Save £4,945, Sunroof, Satnav, Air Conditioning, DAB Audio, Touchscreen, Cruise, Alarm.



2016 Jeep Cherokee 2.2 MultiJet II Night Eagle, VA16 VHH, Bright Whitek 100 miles, £28,950. Nappa Leather, Delivery Miles, Cruise, Climate Control, DAB Audio, Heated Front Seats, Alarm.



2016 Jeep Cherokee 2.2 MultiJet II Limited, VA16 VHJ, Silver Grey, 100 miles, £29,950. Nappa Leather, Auto Aircon, Cruise, Front/Rear Park Assist, Polished Alloys, Rain Sensor, Power Windows.



2014 Jeep Grand Cherokee 3.0 CRD Overland, SA64 YDV, True Blue, 6,000 miles, £30,950. Nappa Leather Ventilated Seats, Panoramic Sunroof, Heated Seats, Rear View Camera, Satnav.



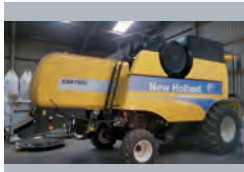
2016 Jeep Grand Cherokee 6.4 Hemi SRT, VE65 ZYR, White, 3,500 miles, £49,950. Track Mode, Launch Mode, Sunroof, Traction Control, Sports Seats, Alloys, Air Conditioning, Cruise, Heated Seats.



2014 Jeep Grand Cherokee 3.0 CRD Summit, WM64 ULL, Granite Crystal, 7,200 miles, £33,950. Ex-Demo, Special Paint, Adaptive Cruise, Heated Ventilated Seats, 20in Alloys, Natura Plus Leather.



BIG NAMES IN USED EQUIPMENT



2011 New Holland CSX 7050 Combine, 20ft header, 585 hrs, exceptional, recently serviced **£85,000 AT**



2009 Massey Ferguson Centora combine harvester, 22ft header **£54,000 AT**



2012 New Holland BB9080 c/w fork feeder, tandem axle, std & partial bale eject, 18,500 bales **£45,000 BW**



2011 New Holland BB9060 Packer Cutter Baler **£35,000 AT**



2011 New Holland BB9080, fork feeder, tandem steer hyd brakes, moisture sensor, 55,000 bales **£31,500 PC**



2008 New Holland BB950 Packer Cutter Baler **£23,500 AT**



2009 Massey Ferguson 2150 Square Baler, low bale count, immaculate condition **£28,500 AT**



New Holland T5 ex-hire Tractors. Approx 200 hrs, 0% finance and warranty. **£POA BW**



2013 New Holland T7.270 Auto Command, front linkage & PRO, auto steer with RM750, **£46,900 PC**



2012 NH T7.260 Power Command, front linkage, full TRK guidance, 710/60r42 wheels at 30%. **£44,000 RL**



2012 New Holland T6050, 50kph, new tyres, 3,350 hrs **£32,500 BW**



2011 New Holland T6030, 50kph, c/w new tyres, loader brackets, 3,400 hours **£32,500 BW**



2014 Massey Ferguson 7620, front linkage and PTO, 50 kph, 2,100 hrs **£58,500 AT**



2011 Case IH Maxxum 140 4wd, 3675 hrs, air seat A, air con, 40kph, hyd push back hitch **£32,000 SC**



2013 Manitou MLT 627, Manitou hyd headstock, aircon, 24in tyres 50%, 1650 hrs **£31,250 PC**



2013 Manitou MLA629 c/w new tyres **£29,000 BW**



2012 MANITOU MLT625 75H, new Manitou headstock, hydrostatic, tyres 35%, 2,900 hrs **£24,000 JW**



Ex-Demo Vaderstad Tempo 8 Precision Maize Drill, seed meters, seed sensors and control-station **£44,000 PC**



2011 VADERSTAD Rexus Twin 4.5m Press, c/w levelling boards, raptor tines, VGC **£28,250 RL**



Opico Grain Dryer, 12 tonne Eco, Diesel/Kerosene, PTO, twin gravity discharge **£25,600 AT**

Sales Hotline: **01373 465941** (Mon-Fri 08.00-17.00) Out of hours: **07710 985957**

New: www.thwhite.co.uk Used: www.thwhiteagriculture.co.uk

FORAGE HARVESTER/BALER

- 2010 New Holland FR9060 Forage Harvester, 4wd **£85,000 AT**
 2009 New Holland BB950 Baler, 39,000 Bales **£32,500 AT**
 2012, New Holland BB6090 Round Baler, crop cutter, 7500 bales **£9,600 RL**

TRACTORS

- 2013 New Holland T8420 **£82,000 AT**
 2013 Fendt 724 Profi, 3,000 hrs **£65,000 AT**
 2012 John Deere 6830, 50k, 2,600 hrs **£35,000 AT**

- 2013 Claas Arion 430, loader, 1,000 hrs **£25,500 AT**
 Q reg Ford 4610 2wd, 5648 hrs, tyres 80%, column change, very clean little tractor, good yard or sports field machine **£3,950 SC**

MACHINERY

- 2008 Vaderstad RDA400 4.0m Drill, 4,900 hectares, good condition **£12,500 RL**
 2004 Simba Horsch 4 CO Drill, good condition **£9,000 AD**
 2014 Spreadwise Industrial 6 Reeler, good condition **£4,995 BG**

- Vaderstad RDA400 4.8m Drill **£8,500 AT**
 2014, Marshall 1800 gallon tanker 55 x 22.5 tyres, fully opening back door and mud guards **£5,875 BG**
 2009, HeVa 7.5m rollers, 560mm rings **£5,450 RL**
 Dowdeswell DP7D2 Plough, 5 furrow shear bolt, rear discs, press arm, VGC **£1,750 PC**
 2008 Kuhn Combiliner Venta LC402 Combination Drill. HR4003 Power Harrow, 3 rows, Suffolk coulters **£9,500 RD**

TRAILER

- Indispension 11' x 5'8" plant trailer, new bed with floor fixings, spare wheel & drop ramps **£1,100 SC**

RB Ray Bennett 07710 985957
PC Paul Churches 07702 724308
SC Stuart Crook 07831 249489
AD Andy Daffurn 07860 331023
CD Colin Davies 07860 401211
RD Rhodri Davies 07775 003460

BG Bob Gallop 07831 883734
MH Matt Hooper 07824 607087
SK Simon Knight 07860 712963
RL Ryan Lanfear 07769 248602
NN Nick Norman 07850 301575

RM Richard Morgan 07831 351379
SP Simon Pratt 07909 895502
AT Andy Taylor 07831 255811
BW Ben Willcox 07826 917955
JW Joe Woolley 07818 077591

All items offered are subject to remaining unsold. Prices shown do not include VAT.