



Big dig, small excavator



Amazing Fiat Group spring finance offers



Aerating the course at Redditch

PLUS extensive choice of quality used equipment, machinery and vehicles...

AGRICULTURE

PROJECTS

GROUND CARE

DAIRY

COUNTRY STORE

TRAILER CENTRE

LORRY CRANES

CONSTRUCTION

MOTOR GROUP

ENERGY, FIRE & SECURITY

ONLINE STORE



GROUND CARE

NEW JACOBSEN MP493 HELPS THE ETON TEAM TO PULL TOGETHER

"Blade on the feather, shade off the trees; Swing, swing together, with your bodies between your knees." So run the words of the stirring Eton Boating Song which for more than 150 years has urged generations of Etonian oarsmen onwards in their rowing endeavours.

One can't help wondering whether today's young blades, as they endure the muscle burn of a 2.2km thrash at Eton College's hugely impressive Rowing Centre, are thinking much about the Eton Boating Song or indeed the immaculately kept grounds surrounding the rowing lanes at Dorney.

The 400-acre site adjacent to the Thames near Slough was created over 10 years from 1996 at a cost of £17 million, offset by the sale of 4.5 million tonnes of land and gravel from the excavation of the rowing lanes. Fully completed in 2006, the facility has hosted many regattas and was the venue for rowing events in the

2012 Olympic and Paralympic Games.

No less than 90 acres of the site is now covered by water, but the remaining 310 acres – mainly grass and managed woodland – is maintained by a team of just three men headed by grounds manager Paul Outway. More importantly, all the grass cutting is done using just two machines – a wide area mower and a trailed roller mower.

"It's a bit like the old joke about painting the Forth Bridge," said groundsman 'Brad' (Bradley)

Gardener. "As soon as we have finished one cut of the grounds we start another. It's a rolling programme that takes about a week using the two mowers which are out almost every day in all weathers."

With such a demanding schedule the reliability of the machines is just as important as the quality of the cut and when the time came to purchase a new mower last year the team had some serious choices to make.

Continued page 2 >>

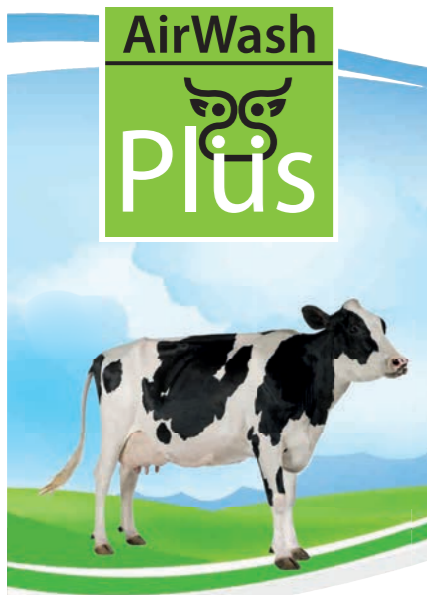


Top: Eton Dorney groundsman Pawel Lukoiszewski uses the new Jacobsen MP493 on a daily basis. Standing next to the machine at the 1,750m marker is his colleague Brad Gardener and Phil Beeny from T H WHITE.

Above: The rowing lanes at Dorney stretch 2.2km from the boating jetties and are surrounded by 310 acres of grass and woodland, all maintained by the small groundcare team.

News and information from
the T H WHITE Group

T H WHITE
GROUP



AirWash Plus is a unique dip and rinse system that can be installed in ANY parlour with ANY make of cluster or liners

1 The cows are milked as normal. When the automatic cluster remover gives the signal that milking has finished, the AirWash Plus programme is initiated.

2 As the process begins a special Y-joint releases a measured amount of teat dip which is mixed with compressed air.

3 The compressed air propels the dip through the system towards the milking cluster where it is injected into the short milk tube.

4 The blast of air creates a fine spray of teat dip inside the injector spray-nozzle in the short milk tube of the liner. The dip goes on while the teat is extended and coats the teat end, while both the skin pores and the teat canal are open and receptive to disinfectant and emollients.

5 After the cluster is removed from the cow it returns to the 'park' position and the teat cup is sanitised and rinsed repeatedly with compressed air and water. Dip residue on the inside of the liner is rinsed out and the entire liner is sanitised.

01373 465941
www.airwashplus.com



PULLING TOGETHER AT ETON
Continued from front page

A Wessex RMX Proline 500 tri-deck roller mower supplied by T H WHITE is used by Brad Gardener for the large open grass areas at the Eton College Rowing Centre.

"We had five mowers on demonstration, but the new Jacobsen MP493 which Phil Beeny of T H WHITE brought down stood head and shoulders above the others. The mowing decks give a 3-metre wide high quality cut with options of 3.3 or 3.5 metres, yet the transport width is only 1.65-metres which suits Eton's roads, gates and bridges. Running at a speed of 7.5mph it can cut up to 8.8 acres per hour. It will also operate on slopes up to 24 degrees which is ideal where our banks slope down to the water."

Eton College purchased the MP493 last September; since then it has mainly been used by groundsman Pawel Lukoiszewski. "One of the best things about the MP493 is the zero-turn manoeuvrability which doesn't scuff up the ground like our old machine," he says. "It's proved its worth cutting difficult areas - not only banks, but around trees and signs, and the engine is quiet and fuel-efficient. It's easy to get at all the parts that need minimal maintenance

and there's no maintenance to do at all on the direct drive decks or the sealed rear axle. For me, it scores highly for operator comfort too, with a full suspension seat and fingertip joystick control."

T H WHITE's relationship with Eton College goes back quite a few years and the other mower at Dorney - a Wessex RMX Proline 500 was also supplied by T H WHITE. This tri-deck machine is a market-leading rotary roller mower which Brad uses on a daily basis behind the tractor.

"The RMX 500 is also good for banks up to 30 degrees and there's independent float on all decks to follow the contours," he adds. "On a site like ours you sometimes can't avoid hitting obstacles such as tree stumps, but the excellent compensation springs allow for that without damage."

"Down time used to be a problem with our old machines, but both the MP493 and the RMX 500 have been extremely reliable. When something does need to



be done we have the comfort of knowing that T H WHITE's technicians are always ready to get us back in action." If you would like to arrange a demonstration of the Jacobsen MP493, the Wessex RMX Proline 500, or discuss any other groundcare solutions, please contact one of our Groundcare branches, or call Phil Beeny on 07917 172861.

GROUND CARE
REDDITCH GOLF CLUB CHOOSES WIEDENMANN TERRA SPIKE GXI8 HD FOR ULTIMATE FLEXIBILITY

A top Worcestershire golf club has purchased a Wiedenmann Terra Spike GXI8 HD deep tine aerator from T H WHITE to deal with compaction and drainage issues on its fairways.

Redditch Golf Club, whose exceptional USGA putting surfaces are universally acclaimed, is committed to a programme of further course-wide investment which is already reaping positive results.

Course Manager Karl Williams, who was appointed in October 2014, has a remit to reduce day closures at Redditch and a goal of having the course open all year round within a few seasons. Much of his early attention has been on the slow draining fairways to keep them playable even in the wettest months.

"The committee has been right behind me. We had the course open between Boxing Day and New Year and had our best week of greens fees ever for that period so we are on our way. But now we can move to the next stage," he said.

"Until now aeration was outsourced. Contractors were booked once a year and the first year I was here the weather was fantastic and they made a marvellous job. Second time round the weather was



really wet and it wasn't so ideal, but we were locked into our booking.

"Now, with our own Terra Spike, we've got absolute flexibility to go out when we want. Our new plan is to aerate every four to six weeks on the greens, every two months on the tees and quarterly on the fairways, so the fairways will get tined four times a year instead of one which I'm confident will make a massive difference.

"We expect the aerator to work hard. Four of the lads are trained to use it and the other two will get their training soon so everyone will get their turn. It's been amazing so far. Easy to use, robust,

smooth and incredibly quick even with the biggest tines. Knowing how much work we intend to do, we ordered six sets at delivery; three sets of 20 mm for the fairways, two sets of 8mm for the greens and one set of 12 mm for the tees.

The club took delivery of its machine from T H WHITE in Redditch, with area manager Simon Bingham installing it during the first week of the new year alongside Wiedenmann UK's Sales Manager, Chas Ayres.

"I'm indebted to Simon and Chas for making it all so easy. We were up and running instantly. Before the month was out we were everywhere with the 20 mm wide tines: the fairways, the tees, the aprons and the greens. We were even able to add 30 tonnes of top dressing and in my 16 year career as a greenkeeper I've never been able to do that in January," Karl added.

Simon Bingham said: "The specification on the Terra Spike GXI 8HD was an exact match to the requirements at Redditch. The club needed an aerator that was quick, precise and could work effectively across all areas and that's what they got, so we were very happy to oblige."



EARLY BIRD GARDEN DEAL

£10 off your next purchase when you spend £40 on gardening products*

T H WHITE
COUNTRY STORE

*Until 31 March 2016. £40 spend excludes existing product promotions

London Road, Marlborough
Open Mon-Fri 8.00am to 6.00pm
Sat 8.00am to 5.30pm
Sun 10.00am to 4.00pm
01672 518408

GROUP			
WHITE'S WORLD			
White's World is published monthly by T H WHITE. To contact our Divisions, call:			
Agriculture	Knockdown	01454 238181	
	Marlborough	01672 512328	
	Frome	01373 465941	
	Huntley	01452 830303	
	Toddington	01242 620211	
	Devizes	01380 722381	
	Andoversford	01451 850363	
	Stockbridge	01264 811260	
Projects		01380 723040	
Groundcare	Knockdown	01454 238181	
	Reading	0118 976 0088	
	Redditch	01527 597770	
	Stockbridge	01264 811260	
Dairy	Frome	01373 465941	
	Huntley	01452 830303	
Country Store		01672 518408	
Trailer Centre		0118 976 0088	
Lorry Cranes		01380 722381	
Construction		01672 512328	
Motor Group		01793 680480	
Energy, Fire & Security		01380 726656	
Online Store	www.thwhitestore.co.uk		
	www.thwhite.co.uk		
	head_office@thwhite.co.uk		
	© T H WHITE Group 2016 E&OE		
	Nursteed Road Devizes Wilts SN10 3EA		



2015 Fiat Panda Multijet, VVA15 WHS, White, 704 miles, £13,450. Risico Cloth/Eco-Leather, 15in Smoked Alloy Wheels, Raised Suspension, 6 Speakers, Blue & Me, Hill Holder, Air Conditioning.



2013 Fiat 500 POP, WN13 ENE, Metallic Black, 18,036 miles, £6,450. Start/Stop, Electric Front Windows, Radio/CD/MP3, Dualdrive PAS, Airbags, Remote Central Locking, ABS, EBD.



2014 Fiat 500 S, WM64 UXR, Yellow, 15,327 miles, £7,950. Auto Climate Control, Sports Kit, Rear Parking Sensor, Front Fog Lights, Start/Stop, Radio/CD/MP3, Heat Insulated Glass, ESP.



2012 Fiat 500 Lounge, AV12 VFL, Black 25,096 miles, £6,950. Leather, Chrome Pack, Front Fog Lights, Rear Parking Sensor, Heat Insulated Glass, Bluetooth, Radio/CD/MP3, Bi-Xenon Headlights.



2014 Fiat 500 Lounge, WM14 VSA, Red, 15,102 miles, £7,450. 15in Multispoke Alloys, Auto Climate Control Chrome Pack, Start/Stop, Sunroof, Front Fog Lights, Electric Door Mirrors, ESP.



2013 Fiat 500 S, VE63 LHP, Red, 14,796 miles, £7,450. Part Leather, Bonnet Stripes, Sports Seats, Chrome Tailpipe, Front Fog Lights, Dark Tinted Rear Windows, Electric Front Windows, PAS, EBD.



2014 Fiat 500 S, WM64 VEO, Grey, 10,432 miles, £8,250. Half Leather, Sport Kit, Auto Climate Control, Seat Memory, 7in Colour Screen, Rear Parking Sensor, Front Fogs, Electric Door Mirrors.



2014 Fiat 500L MultiJet Trekking, WP214 XOT, White, 20,984 miles, £9,950. Cruise, Rear Parking Sensor, Touch Screen Audio, Auto Headlights, Electric Windows, Front Fog Lights, ESP.



2015 Fiat 500X MultiJet Cross, VN15 HNH, Grey, 2,000 miles, £16,950. Cloth/Leather, Auto Dualzone Climate Control, Cruise, Electric Windows, Electric Heated Door Mirrors, Chrome Tailpipe.



2014 Fiat Punto MultiJet GBT, VE14 LHF, Blue, 11,779 miles, £7,995. 16in Sportline Alloys, Air Conditioning, Privacy Glass, Electric Front Windows, Electric Heated Door Mirrors, Hill Holder.



2014 Alfa Romeo MiTo JTDM-2 Distinctive, VN64 UJE, Biancospino White, 6,000 miles, £11,950. Ex-Demo, Cruise, Radio/CD/MP3, Parking Sensor, Sports Pedals, Traction Control, Alfa DNA.



2014 Alfa Romeo MiTo TwinAir Sportiva, VN64 UJC, Etna Black, 4,000 miles, £11,450. Climate Control, 18in Alloys, Parking Sensor, Cruise, Bake Assist, Chrome Tailpipes, Sports Pedals.



2014 Alfa Romeo MiTo JTDM-2 Distinctive, VE64 WEH, Alfa Red, 5,800 miles, £10,950. Auto Headlights, Electric Heated Door Mirrors, Cruise, Sports Pedals and Dials, Electric Windows, PDC.



2015 Alfa Romeo Giulietta TB MultiAir Exclusive TCT, VE15 RFK, Anthracite Grey, 7,000 miles, £17,450. Sports Suspension, Visibility Pack, Satin Chrome Door Mirrors, Climate Control, VDC.



2015 Alfa Romeo Giulietta JTDM-2 Progression, VF15 VEA, Blue, 4,000 miles, £15,850. Climate Control, 16.5in Double Spoke Alloys, 5in Touchscreen, Dynamic Vehicle Control, DAB Audio, PAS.



2015 Abarth 500 Custom, VE15 TXF, Metallic Black, 10 miles only, £13,950. Custom White Full Quilted Leather, White Alloy Wheels, Interscope Hi-Fi, Climate Control, Twin Chrome Tailpipes.



2015 Abarth 500 Custom MTA, VD62 ZPH, White, 30,751 miles, £11,950. Leather, Auto Aircon, Heated Seats, Black Roof Rails, 18in Alloys, Cruise, Front Fog Lights, Thatcham Alarm, ESP.



2015 Abarth 595 Turismo, VN64 SFF, Multicolour, 6,000 miles, £15,950. Red Full Leather, 17in Diamond Abarth 10-Spoke Alloys, Sports Seats, Sports Pedals, Side Skirts, Auto Climate Control, ESP.



2012 Jeep Compass Limited, LD62 ZPH, White, 30,751 miles, £11,950. Leather, Auto Aircon, Heated Seats, Black Roof Rails, 18in Alloys, Cruise, Front Fog Lights, Thatcham Alarm, ESP.



2011 Jeep Wrangler Sahara CRD, RV11 PLN, White, 25,300 miles, £19,450. Auto Air Conditioning, Cruise, Deep Tint Sunscreen Glass, On/Off Road Tyres, One-Touch Windows, Premium Audio.



2015 Jeep Cherokee M-Jet Longitude Plus, VN15 UTZ, Silver, 6,250 miles, £19,950. Dual Zone Climate Control, Rear Park Assist with Stop, 8.4in Touchscreen, Cruise, Hill Descent Control, Fogs.



2011 Jeep Grand Cherokee V6 CRD Limited, WV61 NFU, Metallic Charcoal, 43,000miles, £19,950. Leather, Heated Seats, Satnav, Auto Dimming Door Mirrors, Alpine Audio + 9 Speakers, EBD.



2014 Jeep Grand Cherokee V6 CRD Overland, WM64 UMS, Red, 8,000 miles, £33,950. Nappa Leather, Heated Seats, 8.4in Smarttouch Satnav, Dual Zone Climate Control, Deep Tint Glass.



2014, Fiat Fiorino 16v MultiJet, VO64 OLM, White, 5,000 miles, £6,800. Metro Cloth, Nearside Sliding Door, Athermic Windows, ABS, Brakeforce Distribution, Driver's Seat Height Adjustment.



2012 Renault Master LM35 DCI S/R, YG12 AMK, White, 41,334 miles, £12,000. Long Wheelbase, Electric Heated Door Mirrors, Air Conditioning, Satnav, Anti-Intruder Device, Thatcham Alarm.

MOTOR GROUP



ALFA ROMEO GIULIA WINS WHAT CAR? 'CAR OF THE YEAR 2016' READER AWARD



0% APR REPRESENTATIVE* FINANCE OPTIONS IN THE JEEP SPRING SALES EVENT AT T H WHITE

There's never been a better time to discover which Jeep is right for you, with 0% APR representative finance options on Grand Cherokee, Cherokee, Renegade and Wrangler.

The Jeep Spring Sales Event runs until 31 March 2016, and includes 0% APR

Representative* offers on the All-New Jeep Renegade, winner of 4x4 Magazine's 4x4 of the Year.

To find out more about these very special promotions, please visit www.motors.thwhite.co.uk or call 01793 680480.

OFFICIAL FUEL CONSUMPTION FIGURES FOR JEEP RANGE MPG (L/100KM): EXTRA URBAN 29.4 (9.6) - 70.6 (4.0), URBAN 13.9 (20.3) - 55.4 (5.1), COMBINED 20.9 (13.5) - 64.2 (4.4), CO2 EMISSIONS: 315 TO 115 G/KM. Fuel consumption and CO2 figures are obtained for comparative purposes in accordance with EC directives/regulations and may not be representative of real-life driving conditions. Factors such as driving style, weather and road conditions may also have a significant effect on fuel consumption. 0% APR Representative* Hire Purchase promotion available on new Renegade, Cherokee or Grand Cherokee models registered by 31st March 2016. 0% APR Representative* Hire Purchase available for a 3 year term with a minimum deposit of 32% required for Renegade, 12% for Cherokee and 11% for Grand Cherokee. 0% APR Representative* Advance Payment Plan promotion available on new Wrangler models between 5th January and 31st March 2016. With Advance Payment Plan you have the option to return the vehicle and not pay the final payment, subject to the vehicle not having exceeded an agreed annual mileage and being in good condition. Deposit amount is typically between 50% and 60% depending on term, model, and mileage. Finance subject to status. Guarantees may be required. Terms and Conditions apply. Jeep Financial Services, PO BOX 4465, Slough, SL1 0RW. We work with a number of creditors including Jeep Financial Services. Jeep® is a registered trademark of FCA US LLC.

The much-anticipated new addition to the Alfa Romeo family - the Alfa Romeo Giulia - will be launched later this year, but is already a star among Alfa fans. The stunning new model won the prestigious Reader Award at 'What Car? Car of the Year 2016', picked as the most exciting launch of 2016 by What Car? readers.

The newest Alfa Romeo addition will be powered by an ultralight 6-cylinder all-aluminium twin-turbo petrol engine that achieves 0-62mph in just 3.9 seconds, complimented by its perfect 50:50 weight distribution and head-turning looks.

Dynamic efficiency, coupled with class-leading power-to-weight, delivers impressive performance together with reduced emissions and fuel consumption.

The Giulia was picked from a shortlist of 10 vehicles, among which was the new Fiat 124 Spider. This is the first UK award for this new model from Alfa Romeo and undoubtedly the first of many.



Take advantage of the new personal contract purchase promotions in the Fiat Sales Event.

We can offer £0 deposit* and £0 for 3 months on every Fiat 500 in the range, including the chic New Fiat 500 with £500 Fiat deposit contribution*, the spacious Fiat 500L with £1,000 Fiat deposit contribution* and the bold off-road SUV Fiat 500X with up to £2,000 Fiat deposit contribution*.

To find out more about these very special promotions, please visit www.motors.thwhite.co.uk or call 01793 680480.

FUEL CONSUMPTION FIGURES FOR NEW FIAT RANGE IN MPG (L/100KM): URBAN 29.7 (9.5) - 68.9 (4.1); EXTRA URBAN 46.3 (6.1) - 97.4 (2.9); COMBINED 38.2 (7.4) - 83.1 (3.4). CO2 EMISSIONS 171 - 88 G/KM. Fuel consumption and CO2 figures based on standard EU tests for comparative purposes and may not reflect real driving results. Promotion available on new Fiat models registered from 15th February to 31st March 2016. *£500 deposit contribution on New Fiat 500 Series 4 models, £1,000 deposit contribution on Fiat 500L models and up to £2,000 deposit contribution on Fiat 500X models. This promotion cannot be used in conjunction with any other promotion. Retail customers only. With Fiat i-Deal you have the option to return the vehicle and not pay the final payment, subject to the vehicle not having exceeded an agreed annual mileage and being in good condition. Deposit Contribution is only available in conjunction with 'Fiat i-Deal No Pay Drive Away'. Finance subject to status. Guarantees may be required. Terms and Conditions apply. At participating Dealers only. Fiat Financial Services, PO BOX 4465, Slough, SL1 0RW. All vehicle images are for illustration purposes only and may include options or body paint colours, which incur an additional cost. We work with a number of creditors including Fiat Financial Services.



CONSTRUCTION

MUD, MUD, GLORIOUS MUD...

When W Kerrigan Building Services Ltd of Swindon purchased a Case CX50B 5-ton excavator from T H WHITE, one of the first jobs it was sent to was the construction of a large parking area for a private house in Wiltshire.

The site of the new car park is on sloping ground which had been heavily saturated during the wet weather of recent months and, as the property is a residence, the brief was to minimise any mess and disruption. We met the operator, Gabriel Giles, on site.

Excavations for the car park were already at quite an advanced stage after a couple of week's work as Gabriel approached across a sea of mud that had been dug from the lower level and spread across a field prior to re-landscaping. Despite its compact dimensions the Case CX50B was untroubled by the muddy environment and Gabriel demonstrated both the machine's manoeuvrability and lifting capacity.

"This is our second Case machine," Gabriel said. "We really like them. I can work in tight spaces with this and even though it's a fair-sized plot to dig out the whole job should be finished in about eight weeks, start to finish."



The Case CX50B offers a long reach, plenty of power and a spacious cab while having all the benefits of a zero tail swing machine. Ease of controls are coupled with rapid simultaneous movements due to its three hydraulic pumps, resulting in the machine hydraulics not slowing down even if all controls are operated together. The CX50B now has a Yanmar engine which meets the current Tier 4 Interim environmental standards, while consuming less fuel. This is achieved through the use of an integrated-flow pump system (IFPS) to manage the

pump flow during operation, maximizing the use of engine power and increasing fuel efficiency.

"We have found Case machines to be highly reliable, but there isn't a machine made that never needs attention," Gabriel added. "That's where it's invaluable to have great after-sales support, and we get that from David Price at T H WHITE. It really makes a difference."

To find out more about Case construction machinery call David Price on 07917 077696.

AGRICULTURE

PADDOCK PERFECTION

After such a long, wet winter, grass paddocks will need some springtime TLC and now is a good time to consider the benefit of rolling and harrowing as - hopefully - drier weather approaches.

Whether you own an ATV, compact tractor or a 4 x4, Logic has a top quality range of products to do the job.

For example, the 1.5m ballast roller weighs 600kg when filled with water and will iron out the ground in no time. When empty it's easy to move around and features a safety rotating hitch, heavy duty long life bearings and an adjustable scraper to keep it free from 'picking up.'

Harrowing the ground allows it to breath and generates



growth by pulling out the dead thatch. Choose from either a simple dragged Logic chain harrow or the more versatile Logic Pro Harrow. This features high tensile spring tines which are adjustable for more or less aggressive operation. One big advantage of the Pro Harrow is that it can simply be raised on its wheels to transport. An ideal all rounder, equally happy harrowing the paddock, levelling the manège or restoring a gravel driveway.

The Logic LPH200 Pro Harrow is priced at £1,495.00 plus vat and the CH100 Chain Harrow from £245.00 plus vat.

For further information and a 'spring deal' please contact Simon Knight, 07860712963, or Tim Rochfort, 07973 911934.



T H WHITE AGRICULTURE



BIG NAMES IN USED EQUIPMENT



2005 John Deere 9780 CTS Hill Master Combine, 1318 threshing hrs, yield & moisture **£54,000 RL**



Ex-Demo New Holland FR600, 300FP, grass header, double drive, crop processor, auto lube **£POA RM**



NEW HOLLAND BB9060 Packer Cutter Baler **£35,000 AT**



New Holland BB950 Packer Cutter **£23,500 AT**



2012 New Holland T7.250 Power Cmd, c/w front linkage, PTO, sidewinder, 50kph **£46,000 RL**



2012 NH T7.260 Power Command, front linkage, full TRK guidance, 710/60R42 wheels at 30%. **£45,000 RL**



2011 New Holland T7.235 Power Command, 40kph eco, 3650 hours. **£40,000 RM**



2012 NH T7.185 Range Cmd, 50kph, cab & front axle susp, front linkage & PTO, 1650 hrs **£39,900 PC**



2011 New Holland T6030, 50kph, c/w new tyres, loader brackets **£34,500 BW**



2010 NH T6090 Power Command, 50kph, 4,750 hrs, front linkage & PTO **£34,500 AD**



2012 New Holland T7.200 Range Command, 40kph, 4560 hrs **£33,000 RL**



2012 NH T6070 Elite, 17x17 transmission, 40kph Eco, cab & front suspension, 3900 hrs **£29,900 PC**



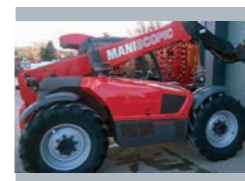
2001, NH TM165, 6675hrs, front suspension, front lkg, cab suspension, powershift transmission **£17,000 JW**



2011 Case IH JXU115, 4wd, 40kph, air con & air seat, Q45 loader, soft tide, hyd quick release **£29,500 SC**



2010 Case IH Maxium 100, 3,300 hrs, tyres 80%, air con, air seat and loader **£26,000 BW**



Choice of 2: MANITOU MLT634, 2012 ex-service support, 2,250 hrs, **£33,000 PC** 2008, 4,500 hrs **£28,000 RD**



2012 MANITOU MLT625 75H, new Manitou headstock, hydrostatic, tyres 35%, 2,900 hrs **£25,000 JW**



2011 VADERSTAD REXIUS Twin 4.5m Press, c/w levelling boards, raptor tines, VGC **£30,000 RL**



2009 VADERSTAD RDA4005 Drill, 3400 hrs **£25,000 RD**



2014 Hi-Spec 2500 gall Tanker, 50kph, air brakes, internal agitator, 4-point linkage **£20,250 BG**

Sales Hotline: **01373 465941** (Mon-Fri 08.00-17.00) Out of hours: **07710 985957**

New: www.thwhite.co.uk Used: www.thwhiteagriculture.co.uk

FORAGE/COMBINE HARVESTERS

- New Holland CX8070 **£140,000 AT**
- New Holland CX8040 **£125,000 AT**
- New Holland CX8030 **£95,000 AT**
- New Holland CX880, 25ft varifeed **£68,000 AT**
- John Deere 2260 **£25,000 AT**

TRACTORS

- Selection of T4, T5, T6 Ex-hire Tractors:**
- C. 200 hrs, 0% finance, warranty. **£POA BW**
 - 2013 New Holland T7235 Power Command, front linkage & PTO **£50,000 AT**
 - New Holland T235 Power Command, front linkage **£48,000 AT**
 - 2014 Massey Ferguson 7620, front linkage

- RB Ray Bennett 07710 985957**
- PC Paul Churches 07702 724308**
- SC Stuart Crook 07831 249489**
- AD Andy Daffurn 07860 331023**
- CD Colin Davies 07860 401211**
- RD Rhodri Davies 07775 003460**

- and PTO, 50 kph, 2,100 hrs **£58,500 AT**
- 2010 Massey Ferguson 6480 **£34,000 AT**
- R reg Case IH Maxium 5130 Pro, Syncro gearbox with power shuttle, air con, 6,320 hrs, very tidy **£11,000 SC**

MACHINERY

- 2013 Kuhn Megant 500QS 5m Drill, 13.9cm spacing, levelling boards, load sensing blower drive, half width shut off, 400 acres **£15,000 PC**
- Unused - Kuhn HR4005d Power Harrow, shop soiled, zero hours, full warranty **£11,200 BW**
- 2008 Gesperdo 12 row Maize Drill **£9,995 AT**
- 2004 Simba Horsch 4 CO Drill, good condition **£9,000 AD**
- 2002 Vaderstad RD300 Trailed Drill, 3629HA system disc, following

- BG Bob Gallop 07831 883734**
- MH Matt Hooper 07824 607087**
- SK Simon Knight 07860 712963**
- RL Ryan Lanfear 07769 248602**
- NN Nick Norman 07850 301575**

- harrow, front wheel press **£8,950 JW**
- Vaderstad RDA400 4.8m Drill **£8,500 AT**
- Kverneland Accord DS-S 4m Drill **£1,500 RD**
- 2008 Opico Grass Harrow, air seeder, 6m width, hydraulic folding, little use for the age **£3,600 AD**
- 2010 krm Zenit 2700 Flail Topper, good condition **£2,600 AD**
- 2014, Spreadwise Industrial 6 Reeler, good condition **£4,995 BG**
- Duport DW44227 4.4m Disc Injector, large frame, hose rotator, heavy duty valve **£2,750 BG**

TRAILER

- 2014 Unused Marshall 8.5 ton Dropside Trailer **£4,500 BW**

- RM Richard Morgan 07831 351379**
- SP Simon Pratt 07909 895502**
- AT Andy Taylor 07831 255811**
- BW Ben Willcox 07826 917955**
- JW Joe Woolley 07818 077591**



www.vaderstad.com



BUY NOW PAY LATER

ON ALL T H WHITE EX-DEMO MACHINES

Three annual payments starting January 2017, interest free! Now available on:

- CR500, CRL525 | Carrier
- RDA400S & RDA600S | Drill
- RST450 | Rexus Twin
- TD400 | TopDown
- TPF8 | Tempo Drill

* Vaderstad terms and conditions apply

Contact your local T H WHITE
branch for further details

Sales: 01373 465941

Out of hours: 07710 985957

New: www.thwhite.co.uk

Used: www.thwhiteagriculture.co.uk



T H WHITE
AGRICULTURE

